

# Virtual School Team

## Head of Virtual School

David Alderson: [d.alderson@dorsetcc.gov.uk](mailto:d.alderson@dorsetcc.gov.uk)  
**01305 228350**

## Tuition Team Leader

Rachel Cox: [rachel.cox@dorsetcc.gov.uk](mailto:rachel.cox@dorsetcc.gov.uk)  
**07789 500654**

## Specialist Support Workers

Helen Coleman: [h.coleman@dorsetcc.gov.uk](mailto:h.coleman@dorsetcc.gov.uk)  
**07990 651918**

Pyramids covered: Blandford, Gillingham,  
Shaftesbury, Sherborne, Sturminster, Wimborne

Alex Gargrave: [a.e.gargrave@dorsetcc.gov.uk](mailto:a.e.gargrave@dorsetcc.gov.uk)  
Mobile: **07867 553525**

Pyramids covered: Lytchett Minster, Purbeck

Julie Walker: [julie.m.walker@dorsetcc.gov.uk](mailto:julie.m.walker@dorsetcc.gov.uk)  
**07900 226266**

Pyramids covered: Wey Valley, All Saints,  
Royal Manor

Kate Osborne: [k.osborne@dorsetcc.gov.uk](mailto:k.osborne@dorsetcc.gov.uk)  
**07827 823401**

Pyramids covered: Dorchester, Budmouth,  
Beaminster, Bridport, Lyme Regis

## Project Teachers (County-wide role)

Gill Oldfield [g.oldfield@dorsetcc.gov.uk](mailto:g.oldfield@dorsetcc.gov.uk)  
**07795 497023**

Pyramids covered: Ferndown and Corfe Hills

Dean Sharp: [d.sharp@dorsetcc.gov.uk](mailto:d.sharp@dorsetcc.gov.uk)  
**07887 831906**

Pyramids covered: Christchurch

## YISP

Andrew Bartlett: [a.bartlett@dorsetcc.gov.uk](mailto:a.bartlett@dorsetcc.gov.uk)  
**07769 916060**

## Administrative Support

Amanda Powell: [a.c.powell@dorsetcc.gov.uk](mailto:a.c.powell@dorsetcc.gov.uk)  
**01305 228309**

## The Virtual School for Children in Care

Monkton Park  
Winterborne Monkton  
Dorchester  
DT2 9PS.

Telephone: 01305 228309

Fax: 01305 228399

All leaflets can be made available  
in audio tape, large print and  
Braille, or alternative languages  
on request.

Design and Print Service  
112616

# Virtual School for children in care

## Dorset County Council

Enabling communities in Dorset to thrive,  
now and for the future



The Virtual School supports children in care as though they were on roll at a single school. Focussing on improving attainment, it works to secure the best possible educational outcomes for children in care in schools and other settings.

### Specialist Support Workers

These team members support schools in monitoring the performance of Children in Care (CiC), and will help promote contact between schools, carers and Social Workers. Each school has an allocated member of the team who will be the first point of reference when advice is needed or there is any concern about a young person.

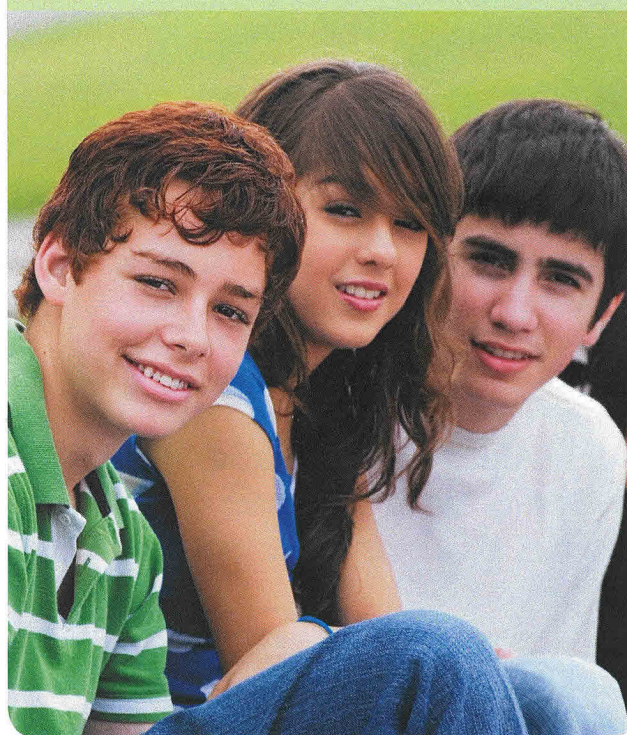
The team members will attend Personal Education Plan (PEP) meetings when they can, especially where there are issues which are proving particularly challenging. They will make sure that schools and Social Workers hold PEP meetings regularly. They may also attend Child in Care Reviews where necessary.

### The Tuition Team

The Tuition Team provides extra support for a number of young people who are finding it difficult to maintain a school or Learning Centre placement. Through outreach work across Dorset, the team works with some of the most challenging pupils, often on a 1:1 basis. The team liaises closely with staff at the Learning Centres and schools where the students are on roll.

### Working with other agencies

The Virtual School can help schools liaise with other professionals and agencies, e.g. Childcare Social Workers, Foster Carers, Children Out of School Service (COOSS), Educational Psychologists, YISP, Health Co-ordinators, Connexions, Social Inclusion, the KORU Dramatherapy Project, Early Years. In some cases it can arrange fast-track referrals to these services.



### The team arranges :

- Taster days at Bournemouth University for children in Year 9, Year 10 and 11 to raise expectations.
- An annual Awards Ceremony to celebrate the successes of Children in Care, as part of the fostering summer fair.
- The Letterbox Reading Scheme, which delivers six monthly parcels of reading books and stationery to the homes of children in Years 3 and 5.

### YISP Support

The YISP team member works specifically with Children in Care who are at risk of offending, with the intention of engaging them in positive activities. This will often provide the stability needed to improve their participation in education.

### Project Teachers

The two teachers in the Virtual School work with young people who require individual teaching. Often this will be during a transition period, in order to reintroduce them into a school or Learning Centre. These two members of staff also have expertise in working with young people who have exhibited inappropriate sexualised behaviour, and also link with the specialist fostering scheme.