

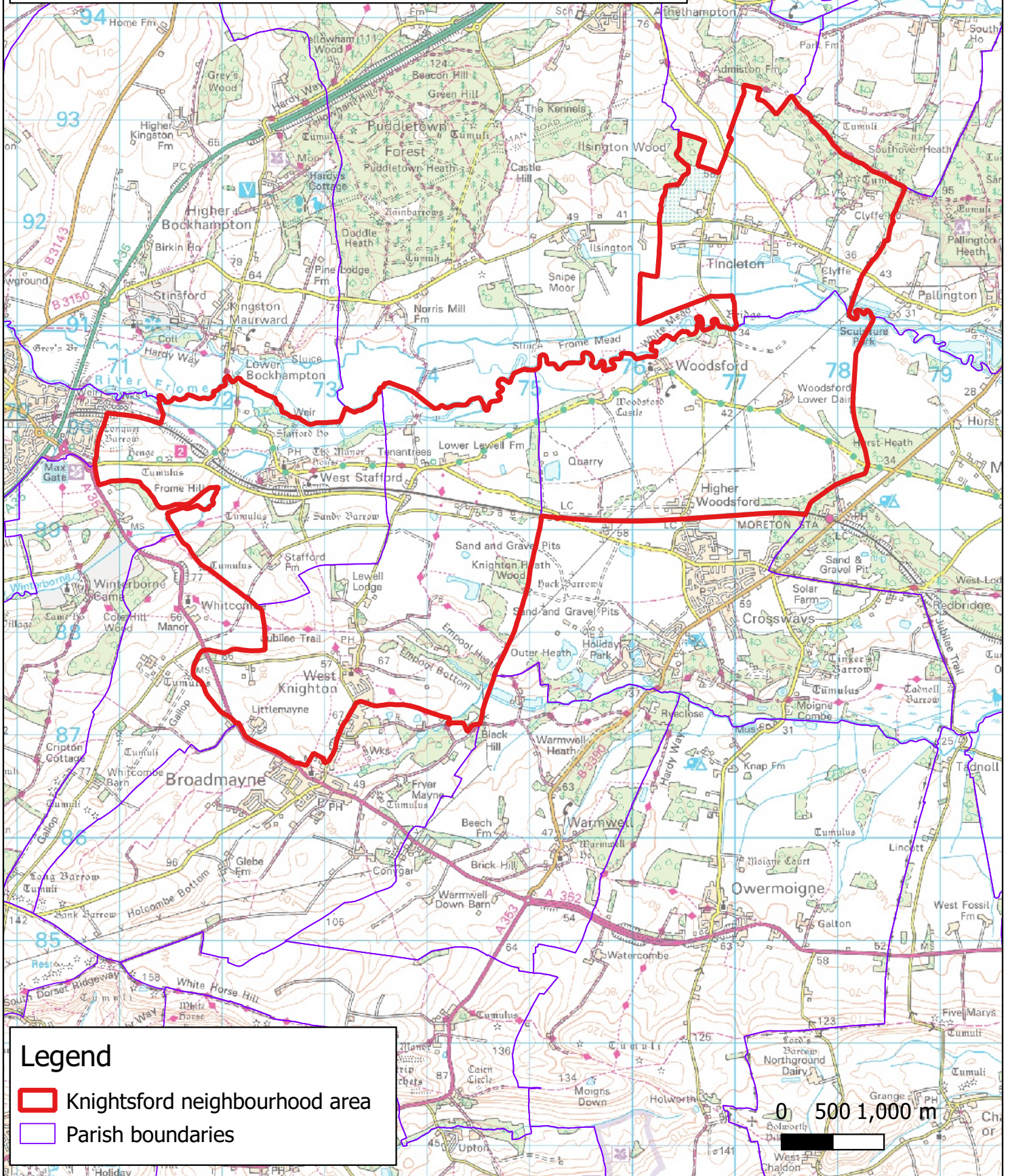
Knightsford Neighbourhood Area

Covering the parishes of Tincleton, West Knighton, West Stafford and Woodsford


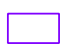
Designation Date: 8 July 2021

Organisation who made the application: Knightsford Parish Council (Group)

© Crown copyright [and database rights] 2021 0100060963. Use of this data is subject to terms and conditions. This map is not definitive and has no legal status.



Legend

-  Knightsford neighbourhood area
-  Parish boundaries

0 500 1,000 m