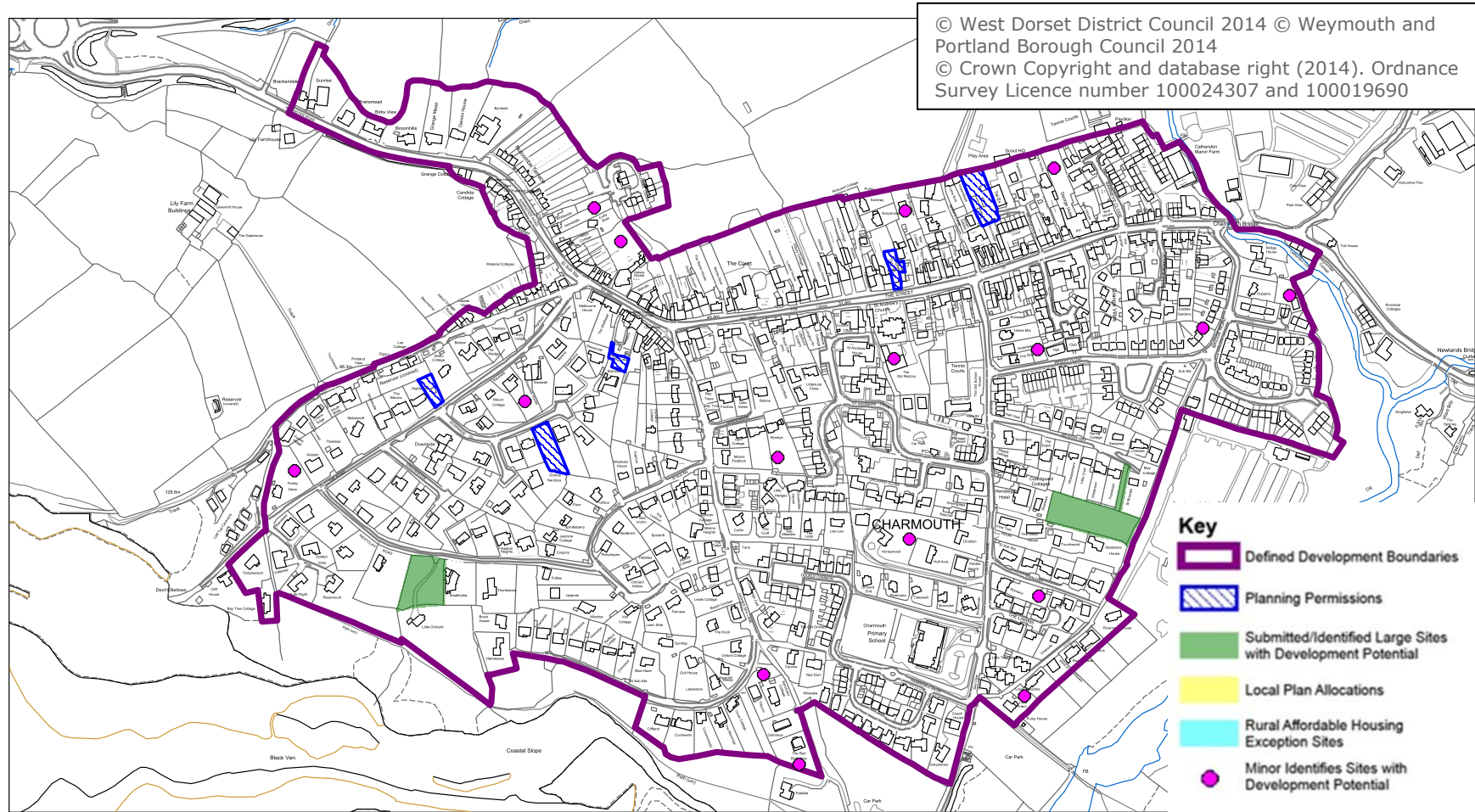
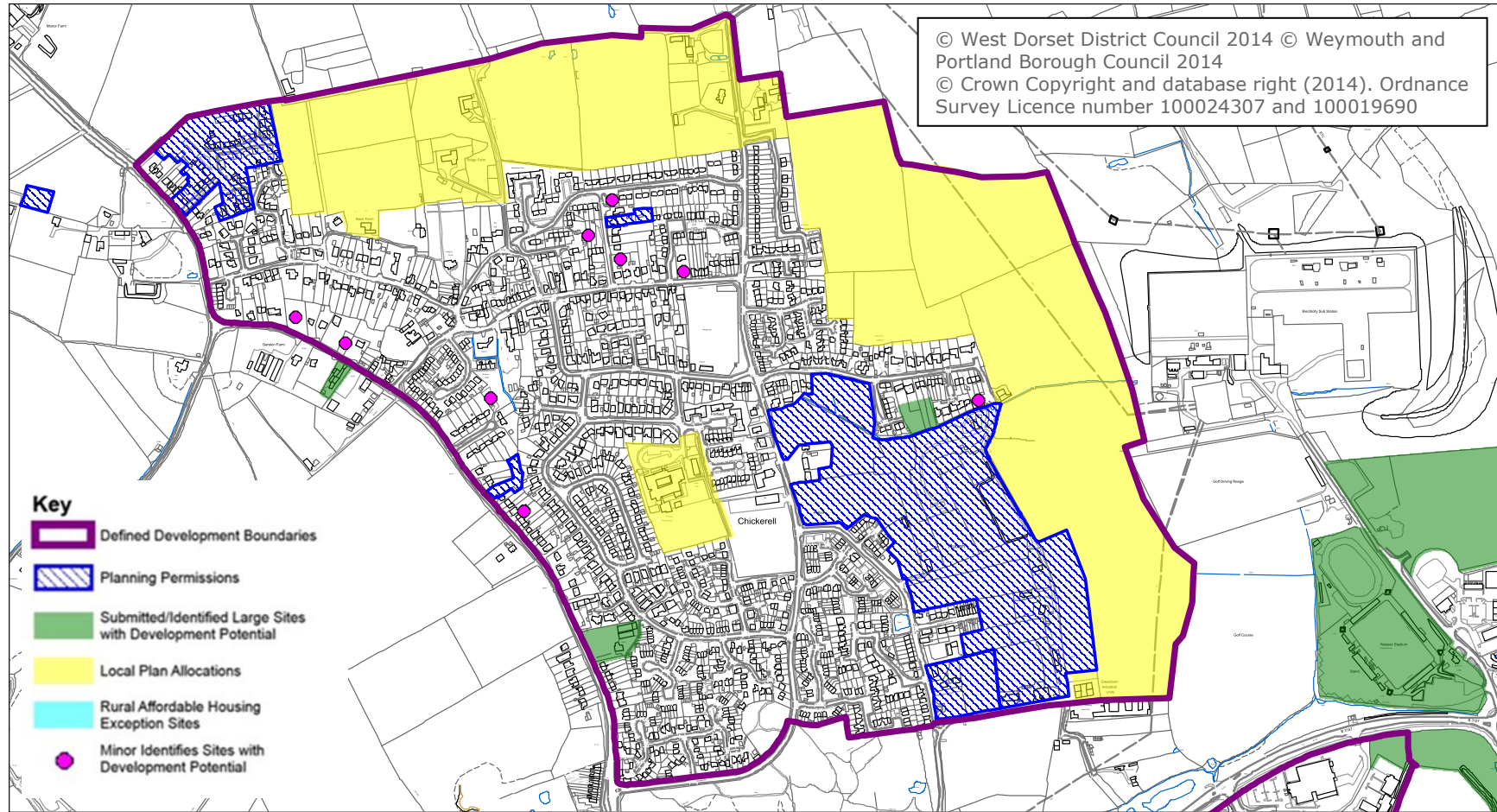


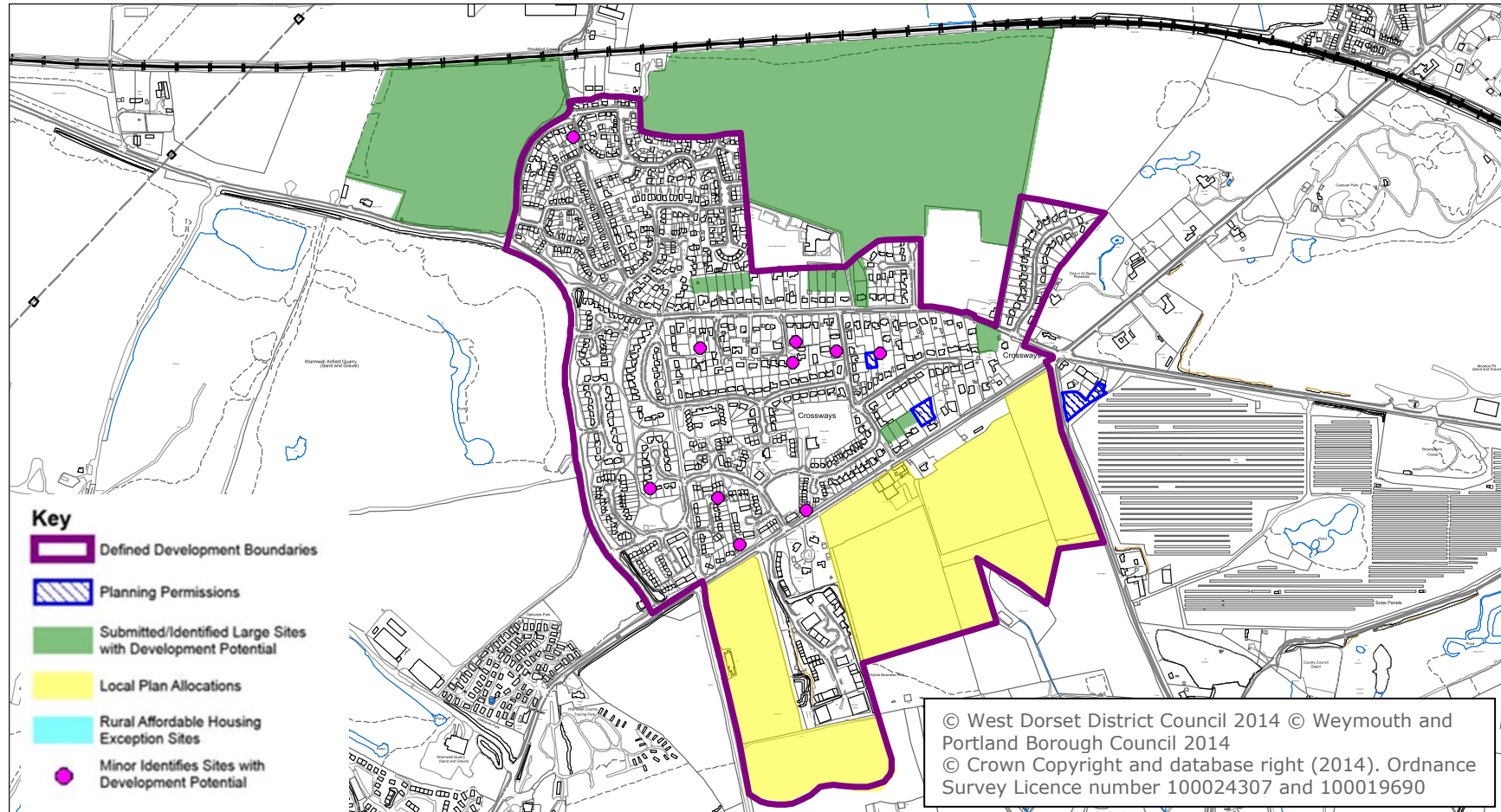
Charmouth



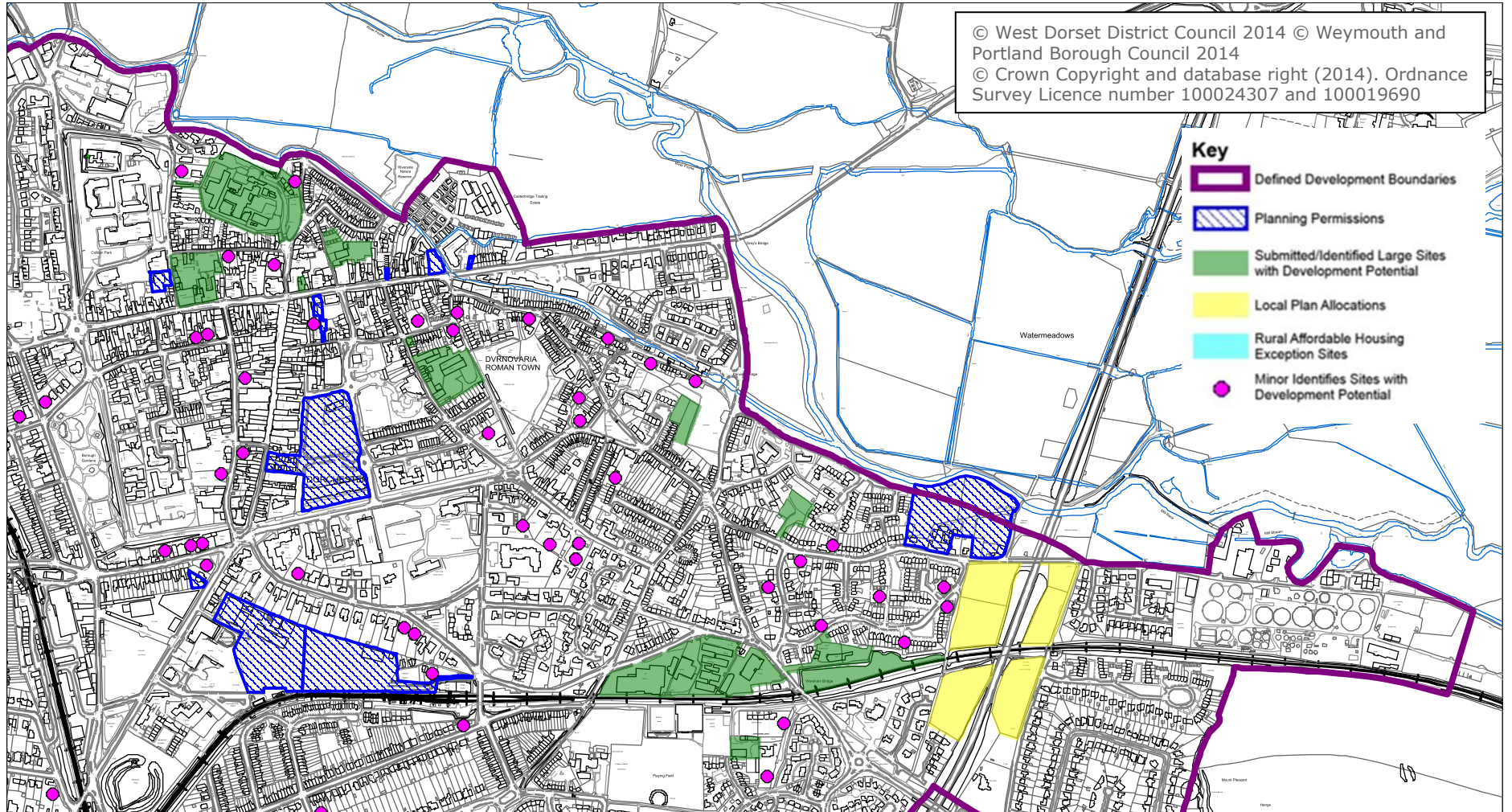
Chickerell



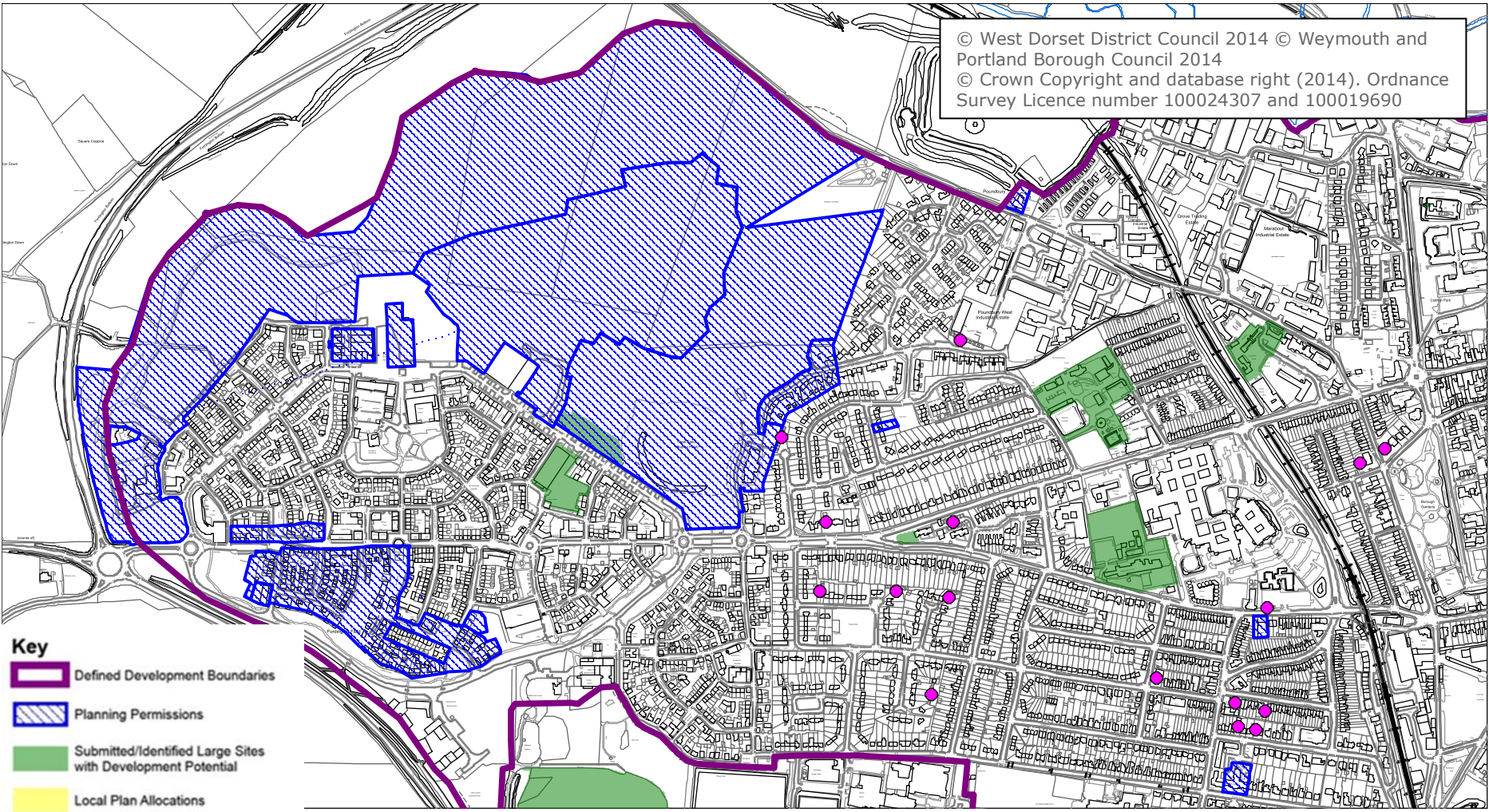
Crossways



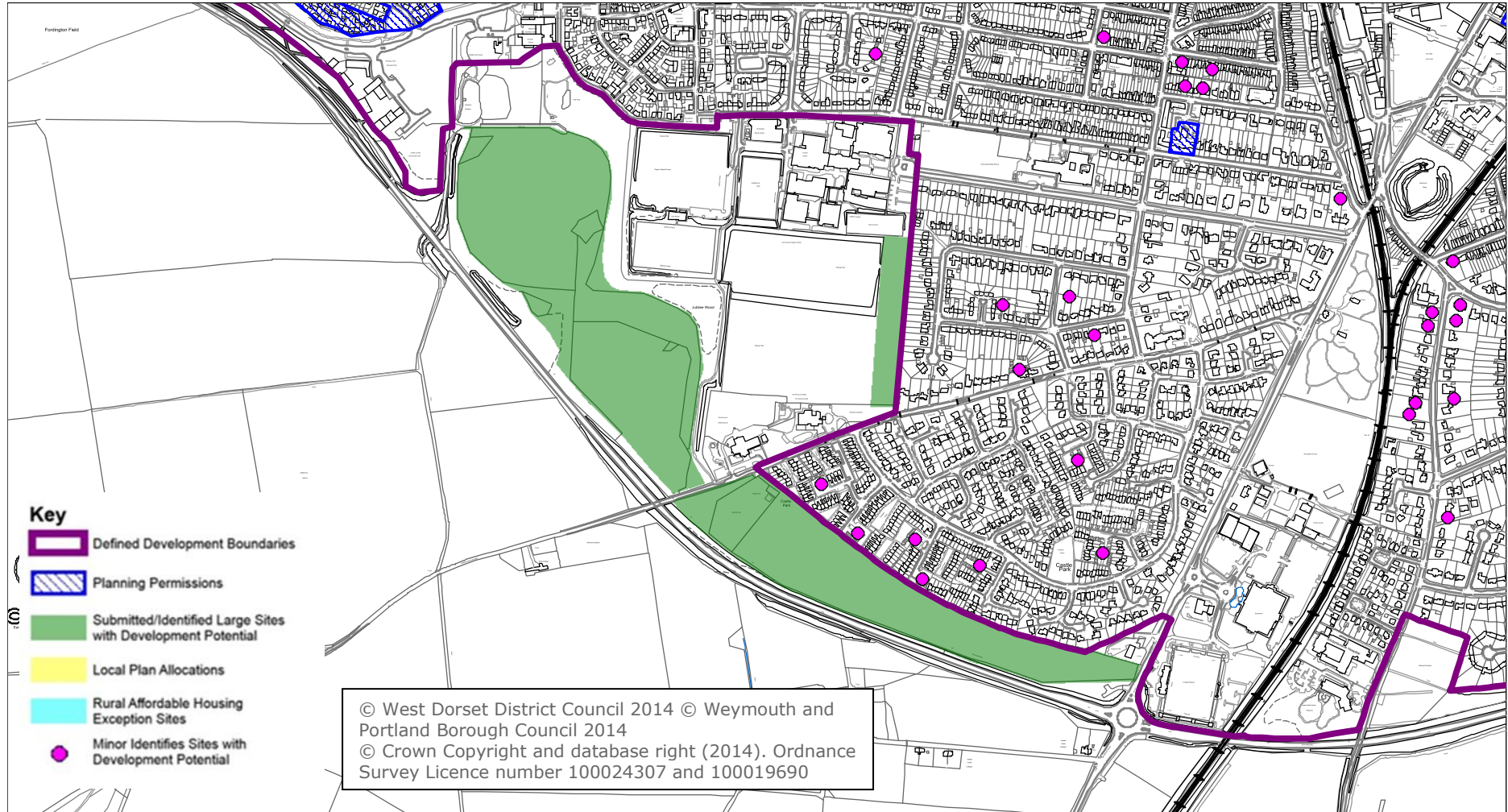
Dorchester



© West Dorset District Council 2014 © Weymouth and Portland Borough Council 2014
© Crown Copyright and database right (2014). Ordnance Survey Licence number 100024307 and 100019690



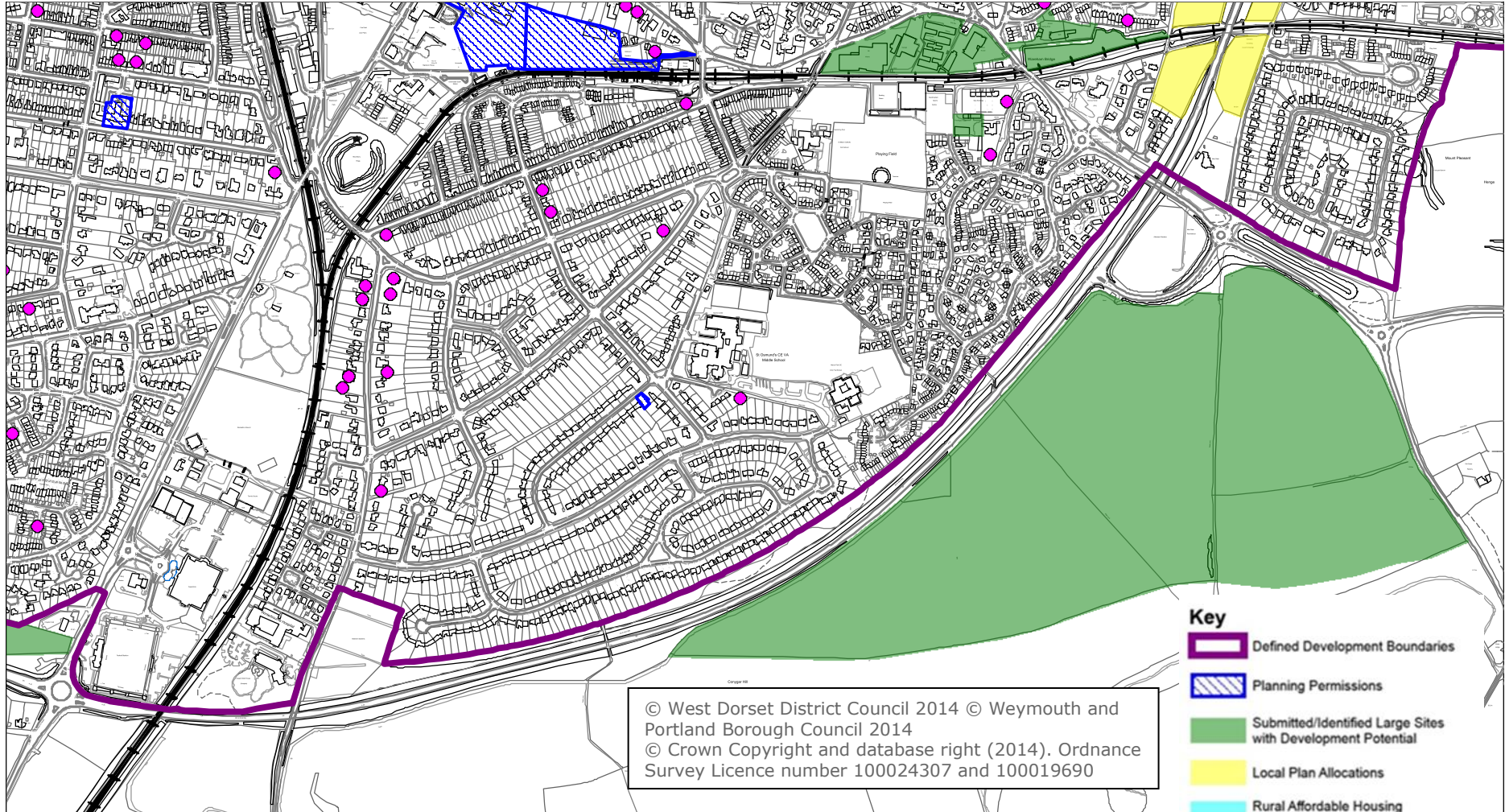
- Key**
-  Defined Development Boundaries
 -  Planning Permissions
 -  Submitted/Identified Large Sites with Development Potential
 -  Local Plan Allocations
 -  Rural Affordable Housing Exception Sites
 -  Minor Identified Sites with Development Potential



Key

- Defined Development Boundaries
- Planning Permissions
- Submitted/Identified Large Sites with Development Potential
- Local Plan Allocations
- Rural Affordable Housing Exception Sites
- Minor Identified Sites with Development Potential

© West Dorset District Council 2014 © Weymouth and Portland Borough Council 2014
 © Crown Copyright and database right (2014). Ordnance Survey Licence number 100024307 and 100019690



- Key**
-  Defined Development Boundaries
 -  Planning Permissions
 -  Submitted/Identified Large Sites with Development Potential
 -  Local Plan Allocations
 -  Rural Affordable Housing Exception Sites
 -  Minor Identifies Sites with Development Potential

Drimpton

