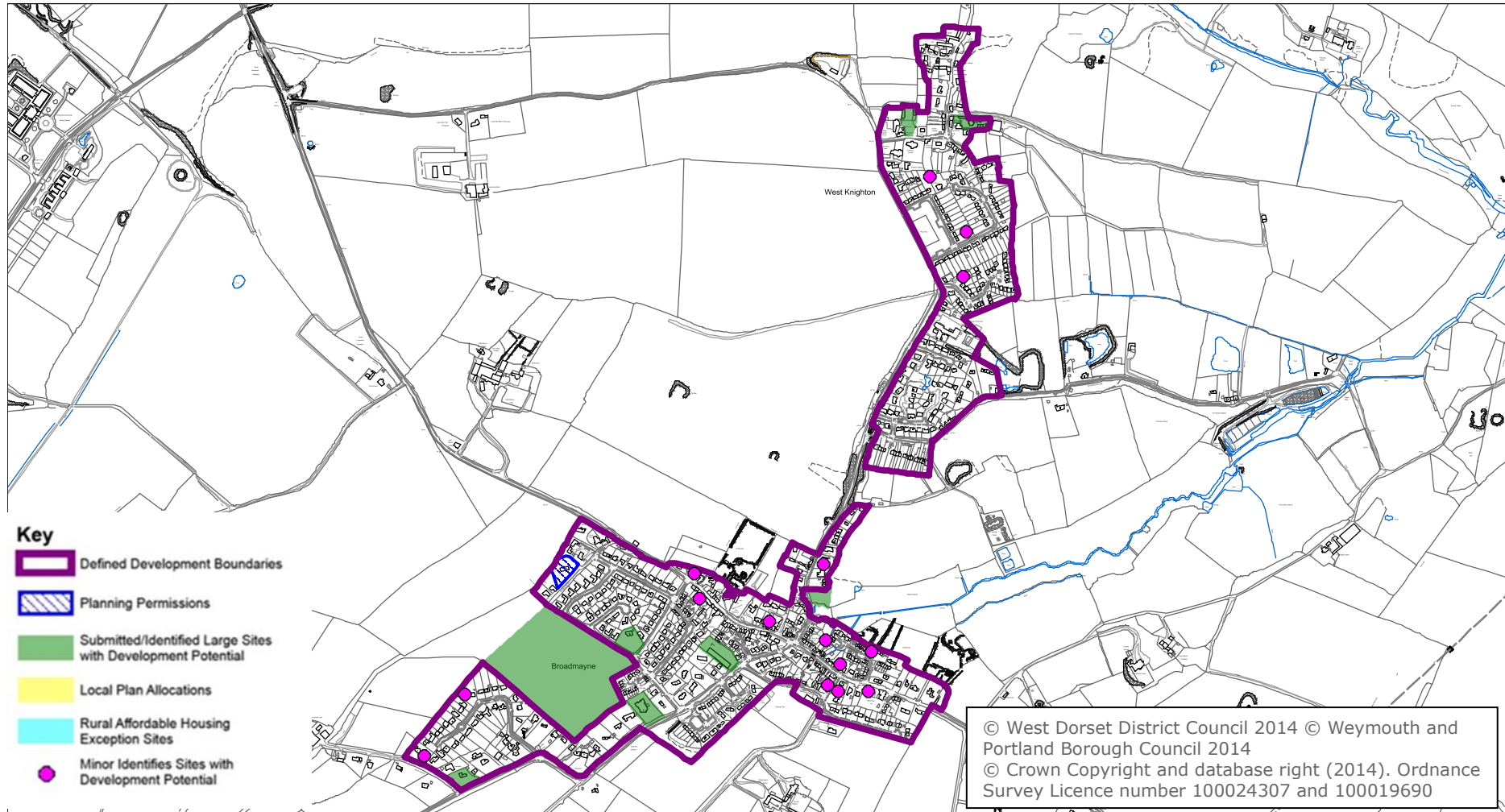
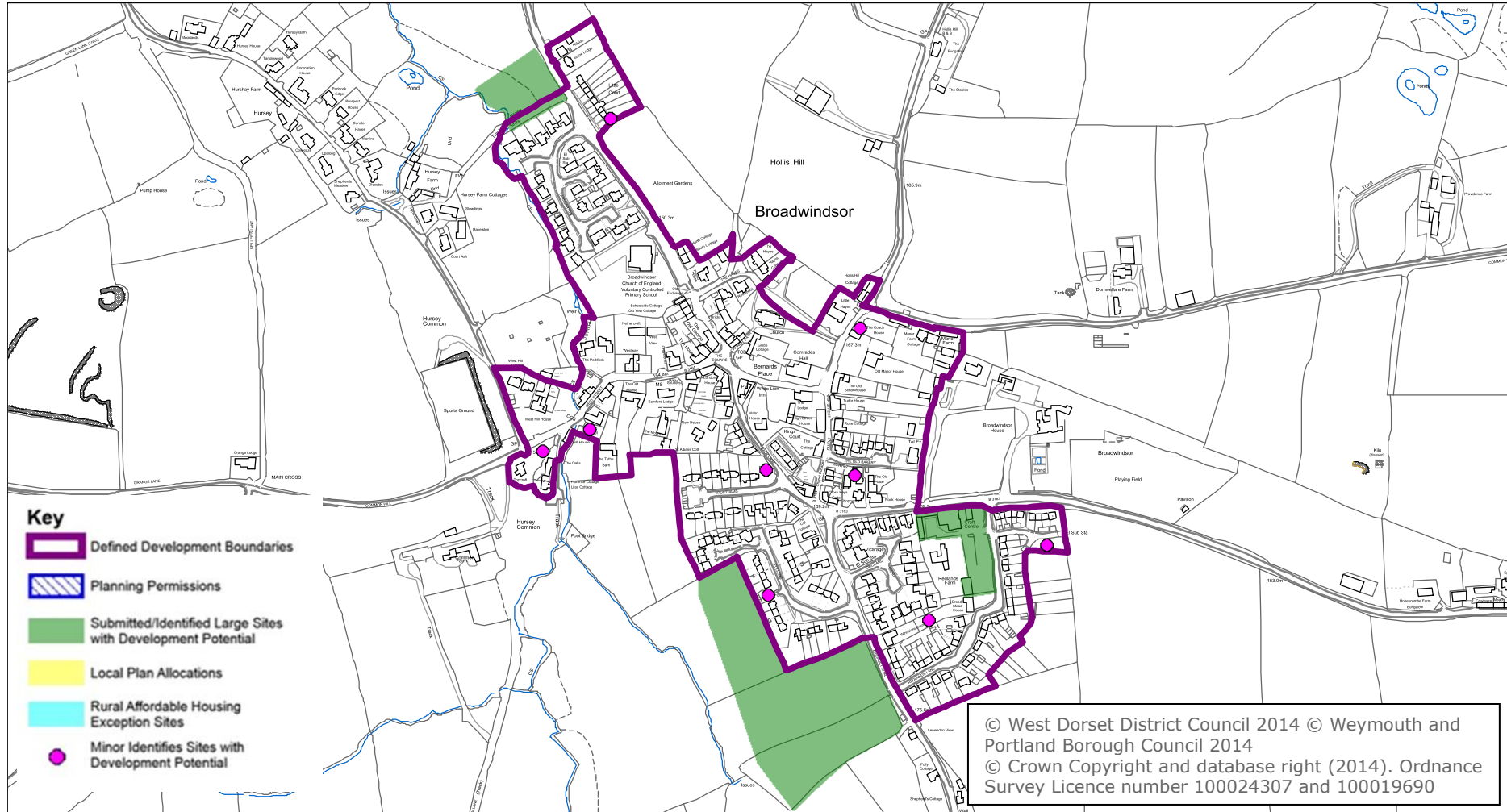


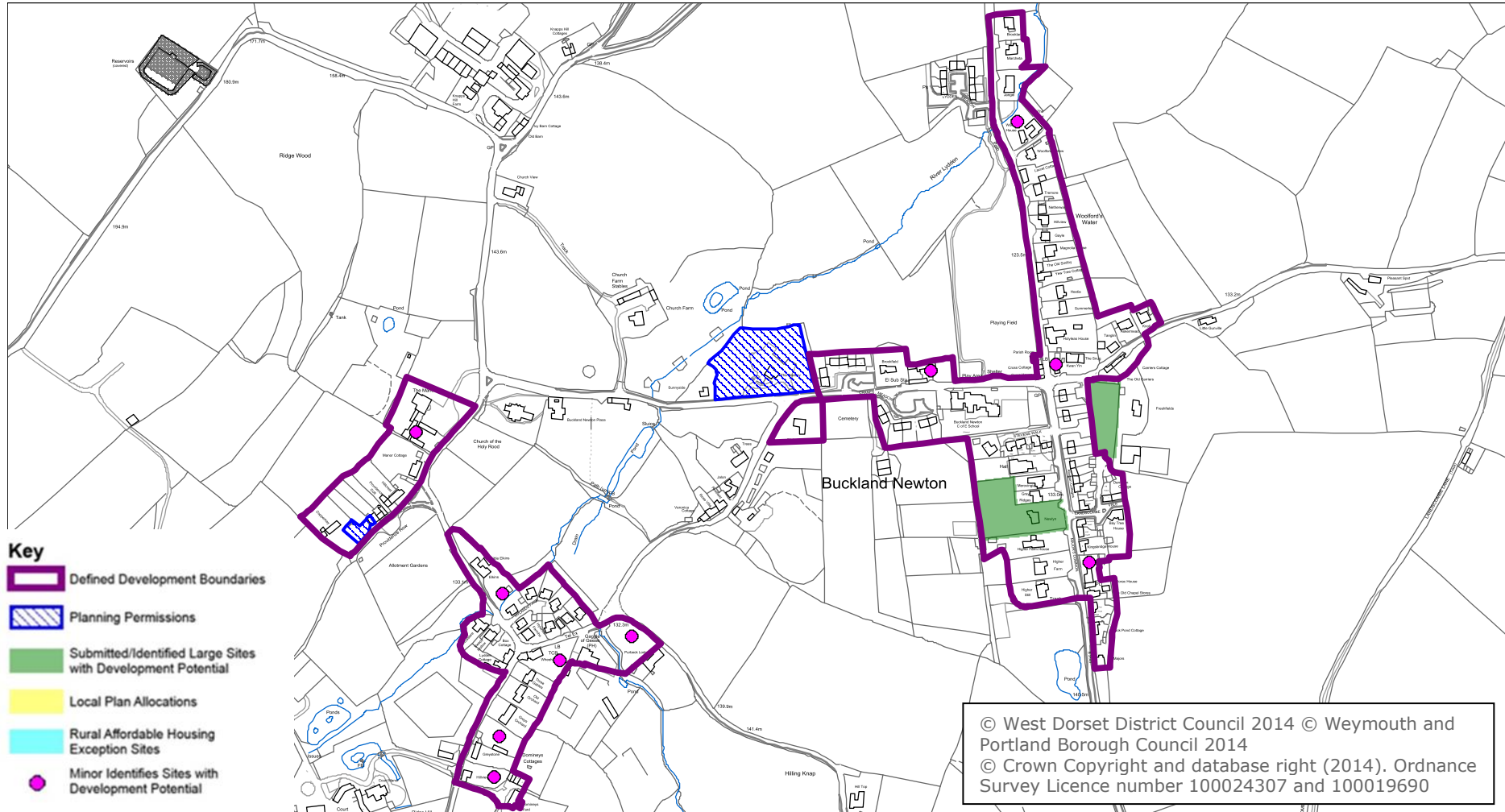
Broadmayne



Broadwindsor



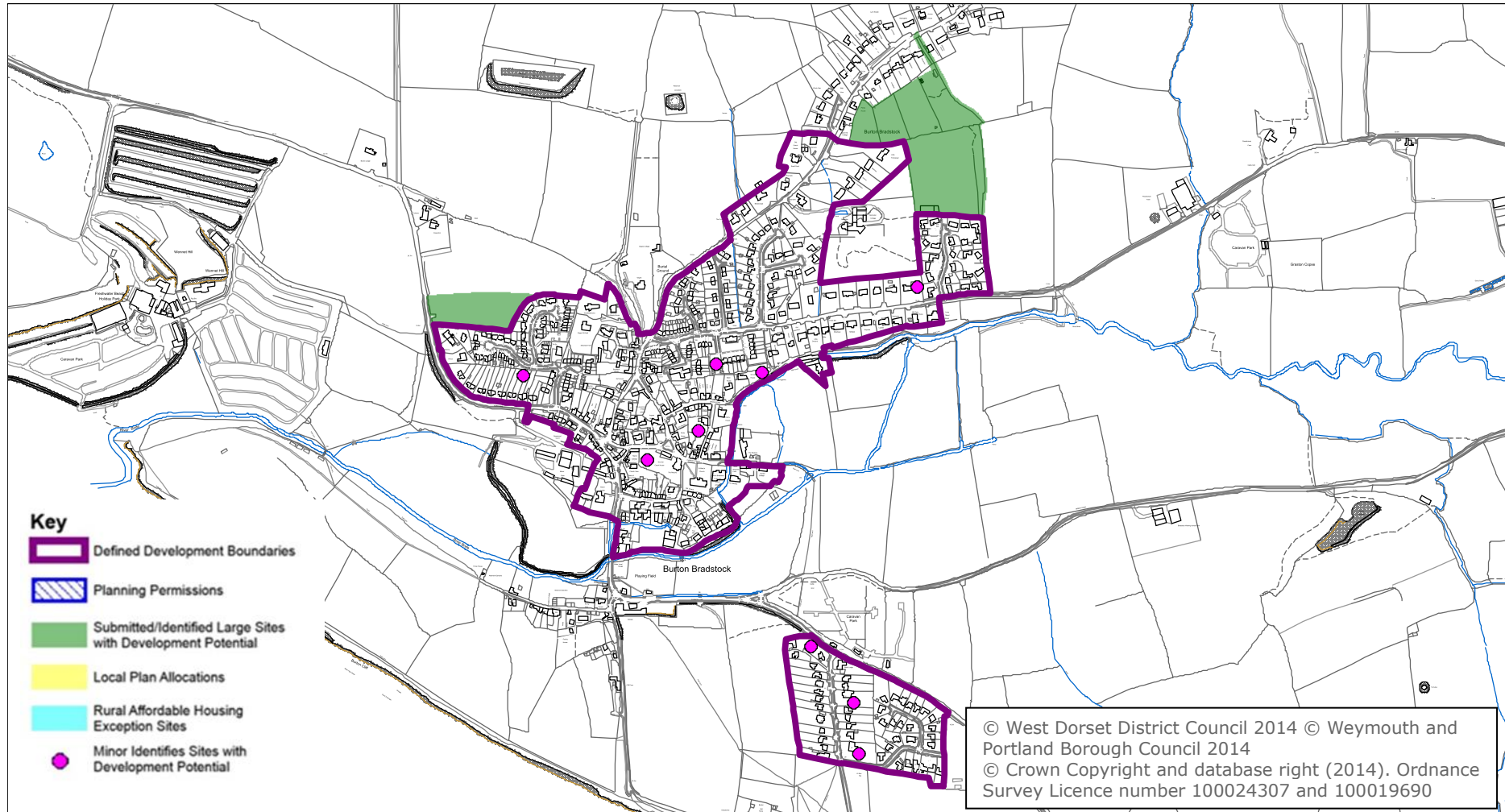
Buckland Newton



- Key**
- Defined Development Boundaries
 - Planning Permissions
 - Submitted/Identified Large Sites with Development Potential
 - Local Plan Allocations
 - Rural Affordable Housing Exception Sites
 - Minor Identifies Sites with Development Potential

© West Dorset District Council 2014 © Weymouth and Portland Borough Council 2014
 © Crown Copyright and database right (2014). Ordnance Survey Licence number 100024307 and 100019690

Burton Bradstock

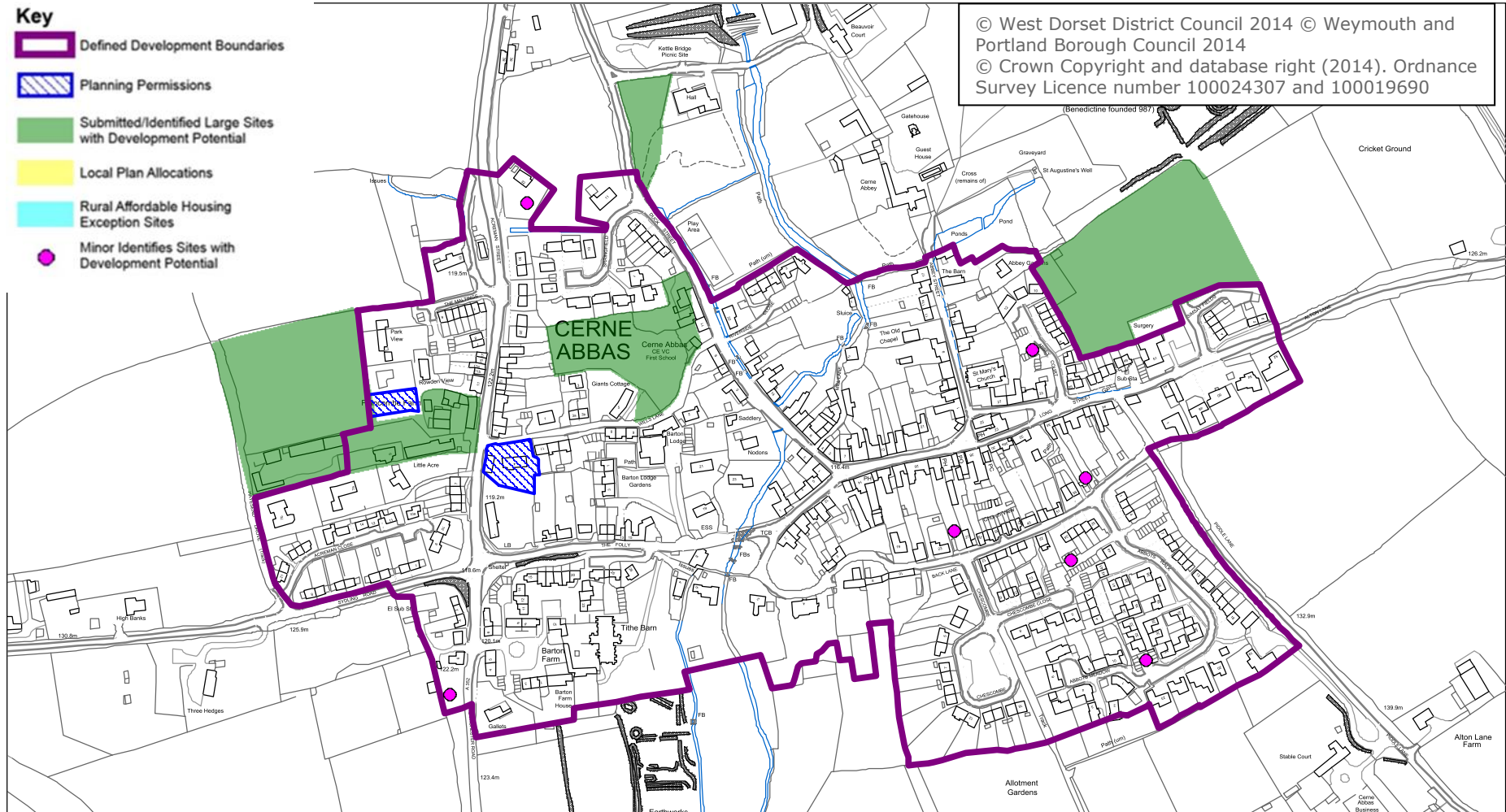


Cerne Abbas

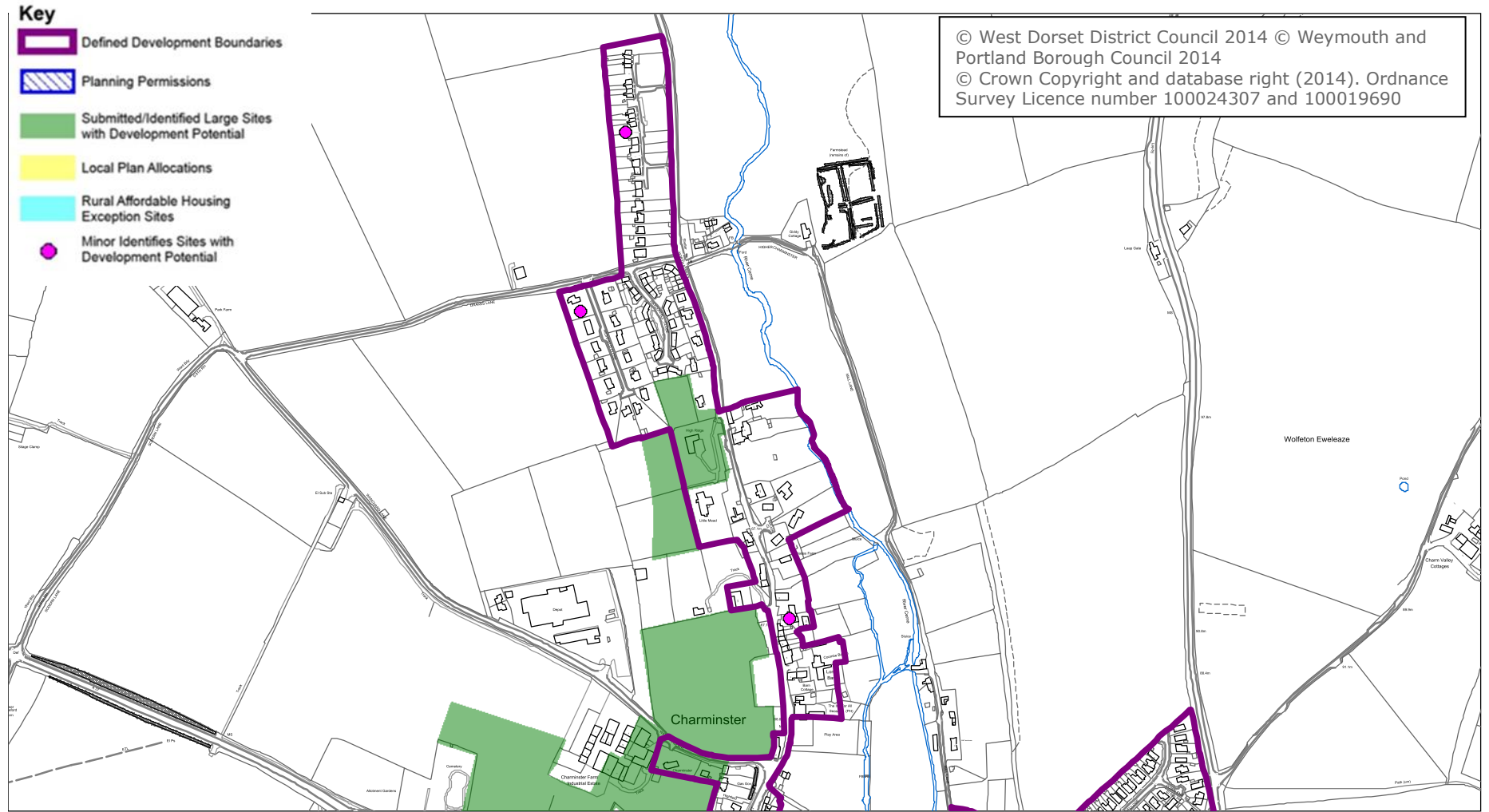
Key

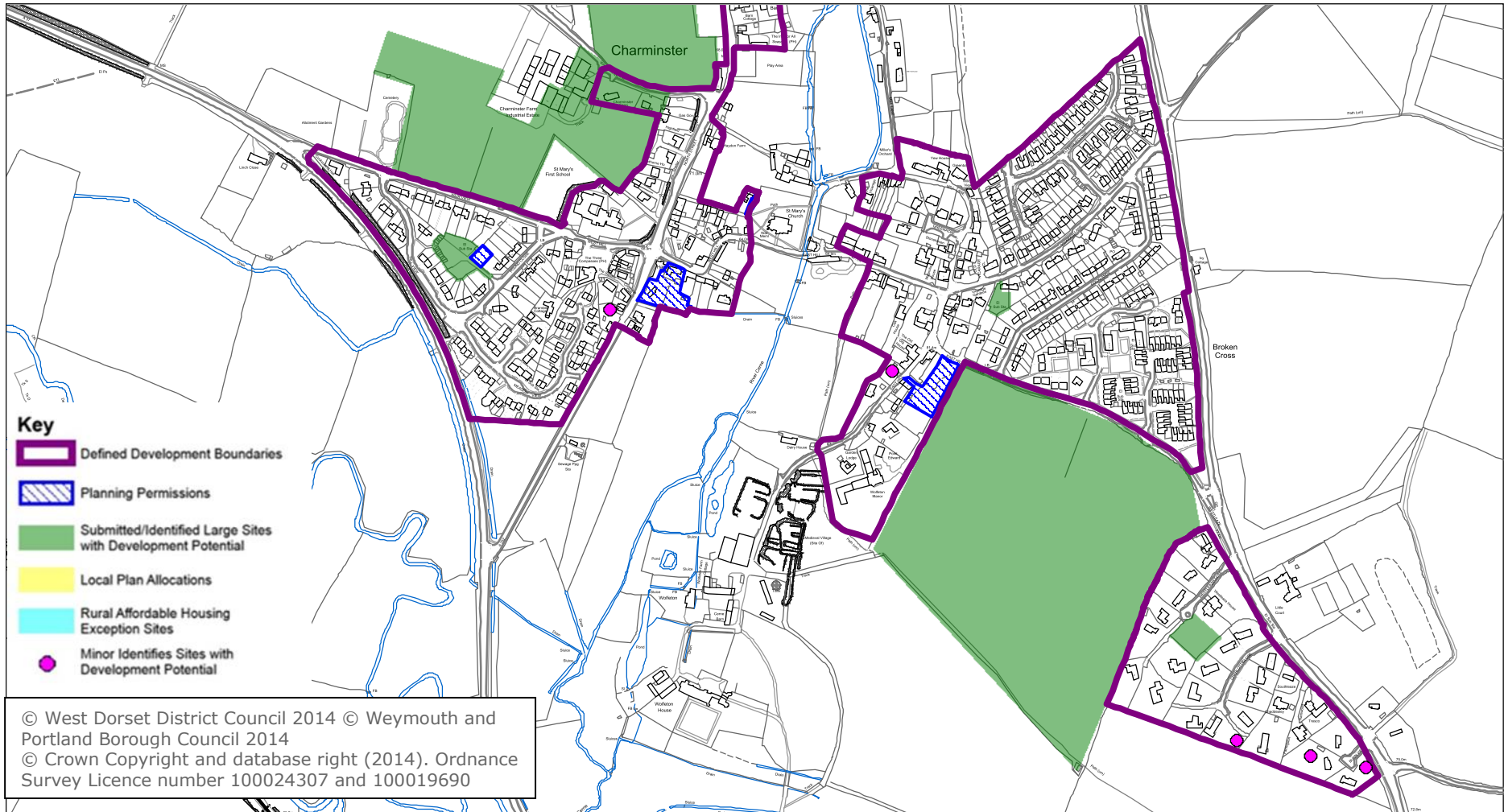
-  Defined Development Boundaries
-  Planning Permissions
-  Submitted/Identified Large Sites with Development Potential
-  Local Plan Allocations
-  Rural Affordable Housing Exception Sites
-  Minor Identifies Sites with Development Potential

© West Dorset District Council 2014 © Weymouth and Portland Borough Council 2014
 © Crown Copyright and database right (2014). Ordnance Survey Licence number 100024307 and 100019690



Charminster





- Key**
- Defined Development Boundaries
 - Planning Permissions
 - Submitted/Identified Large Sites with Development Potential
 - Local Plan Allocations
 - Rural Affordable Housing Exception Sites
 - Minor Identifies Sites with Development Potential

© West Dorset District Council 2014 © Weymouth and Portland Borough Council 2014
 © Crown Copyright and database right (2014). Ordnance Survey Licence number 100024307 and 100019690