

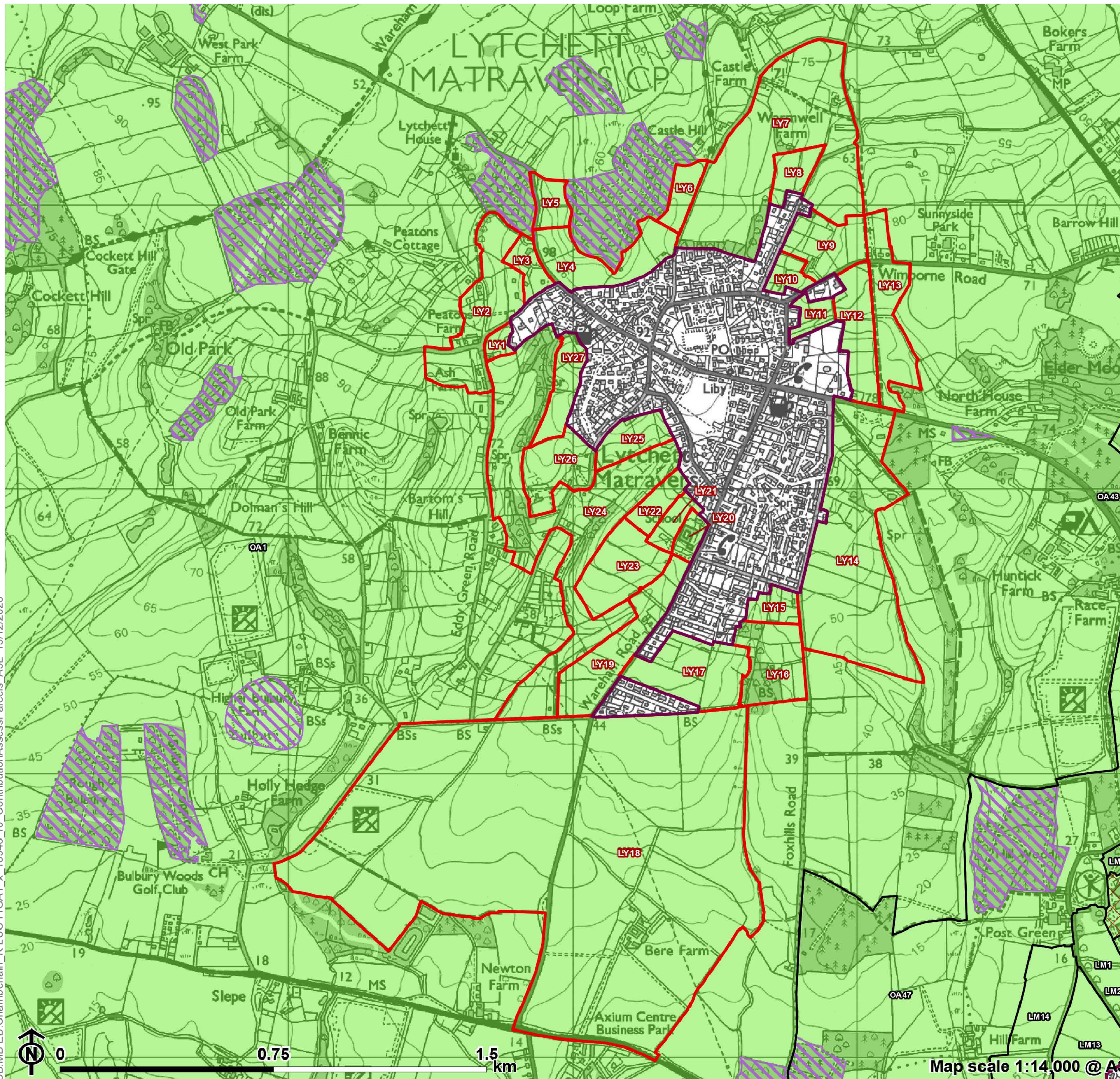
Appendix A

**Maps Showing Contribution
Assessment (for each purpose)
for Parcels around Inset
Settlements:
Lytchett Matravers**

Figure A1.10

**Contribution Assessment Parcels:
Lytchett Matravers**

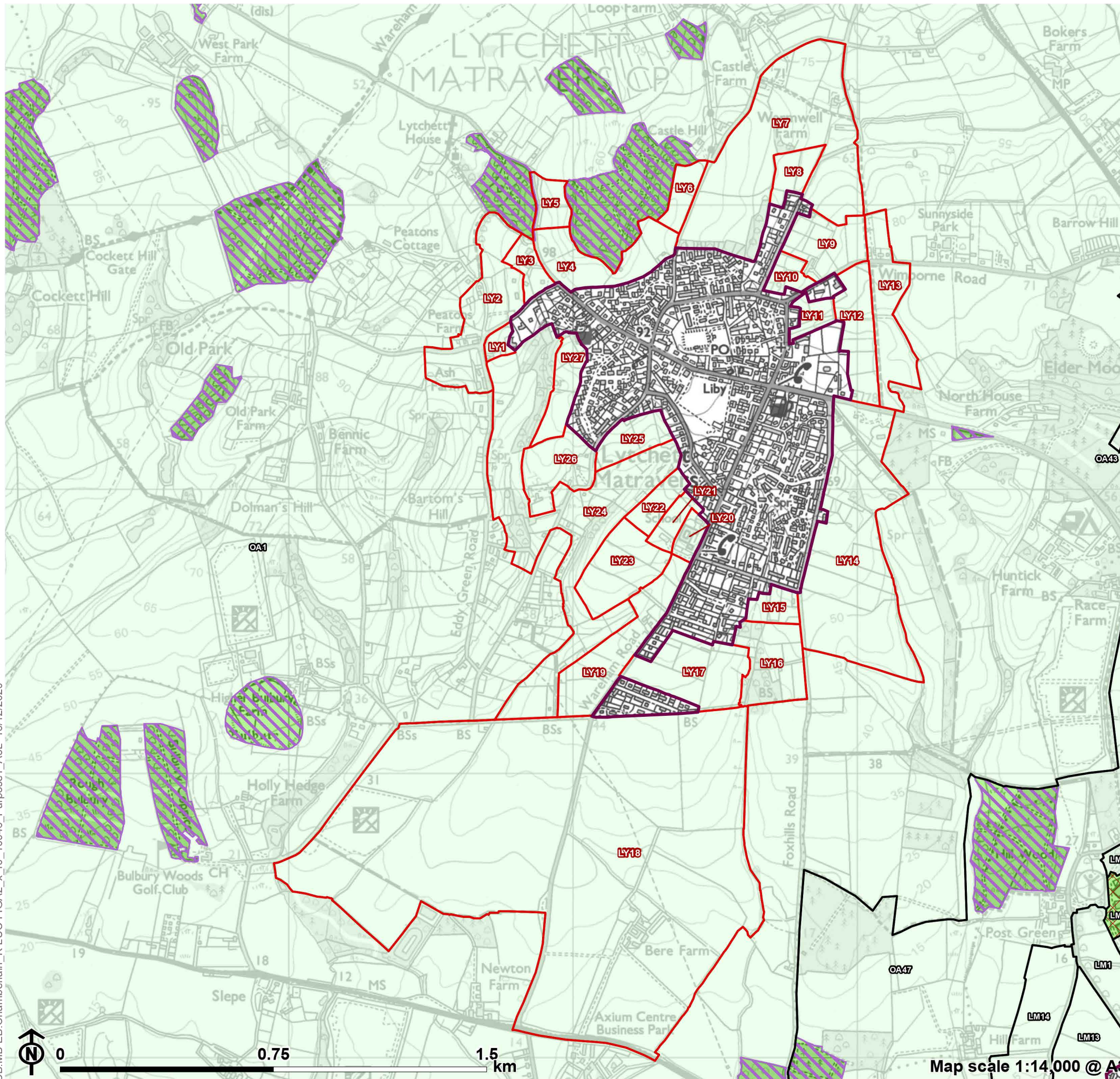
- Local Authority boundary
- Inset area
- Green Belt
- ▭ Lytchett Matravers parcel
- ▭ Parcel
- ▨ No openness
- ▨ Absolute constraint(s)



CB:MB:EB:Chamberlain_K LUC FIGA1_x_10946_r0 ContributionAssessParcels_A3L_15/12/2020

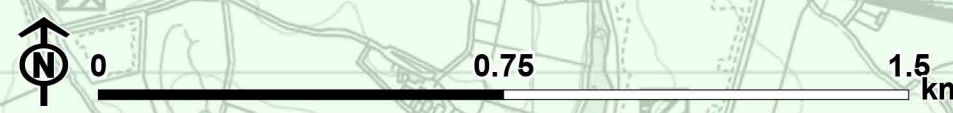
Figure A2.10

**Green Belt Purpose 1 Contribution:
Lytchett Matravers**



- - - Local Authority boundary
 - Inset area
 - Green Belt not assessed
 - ▨ Absolute constraint(s)
 - ▨ No openness
 - ▭ Lytchett Matravers parcel
 - ▭ Parcel
- Purpose 1 contribution**
- Strong
 - Relatively strong
 - Moderate
 - Relatively weak
 - Weak/No

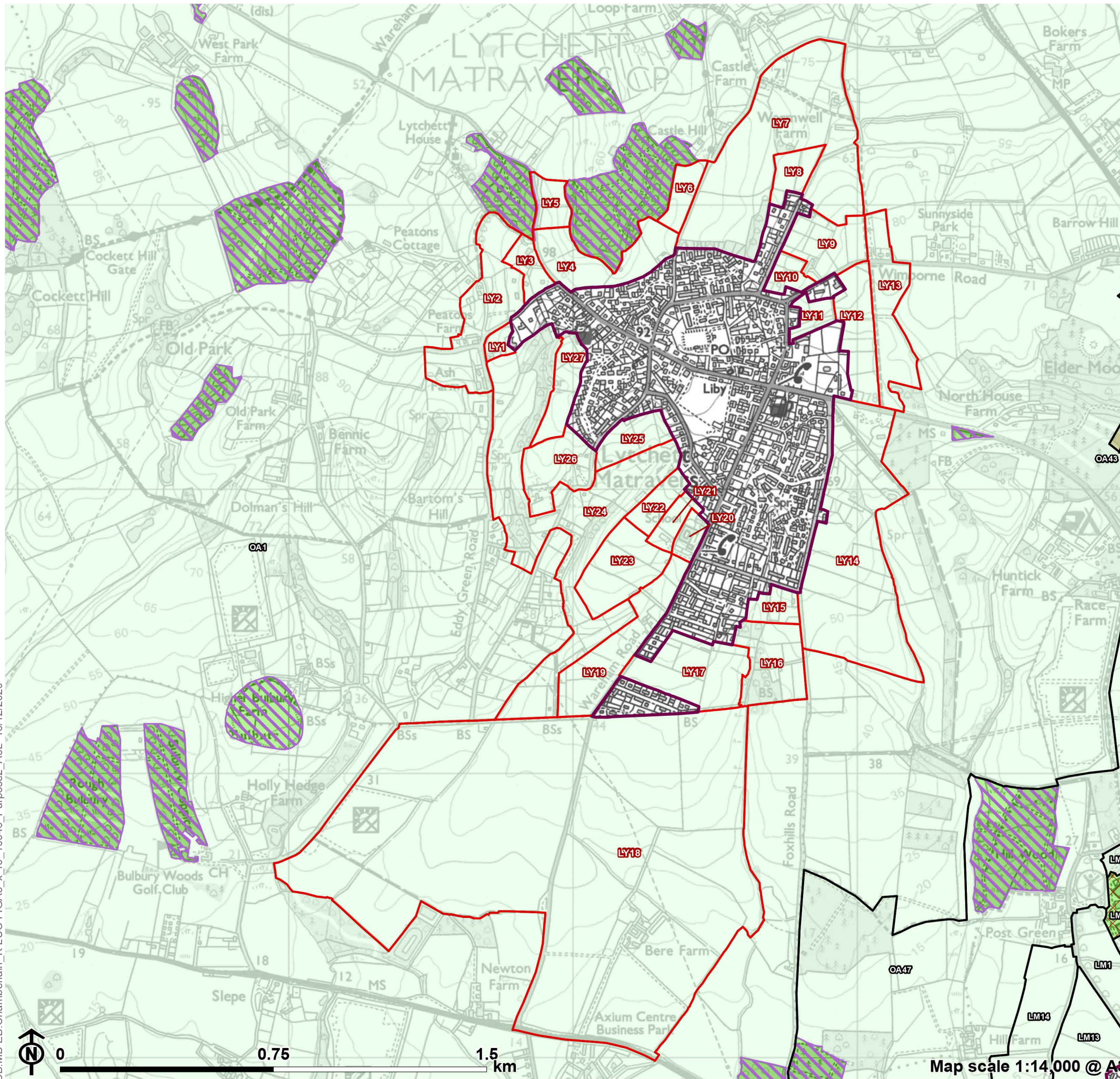
CB:MB:EB:Chamberlain_K LUC FIGA2_x_r0_10946_Purpose1_A3L_15/12/2020



Map scale 1:14,000 @ A3

Figure A3.10

**Green Belt Purpose 2 Contribution:
Lytchett Matravers**

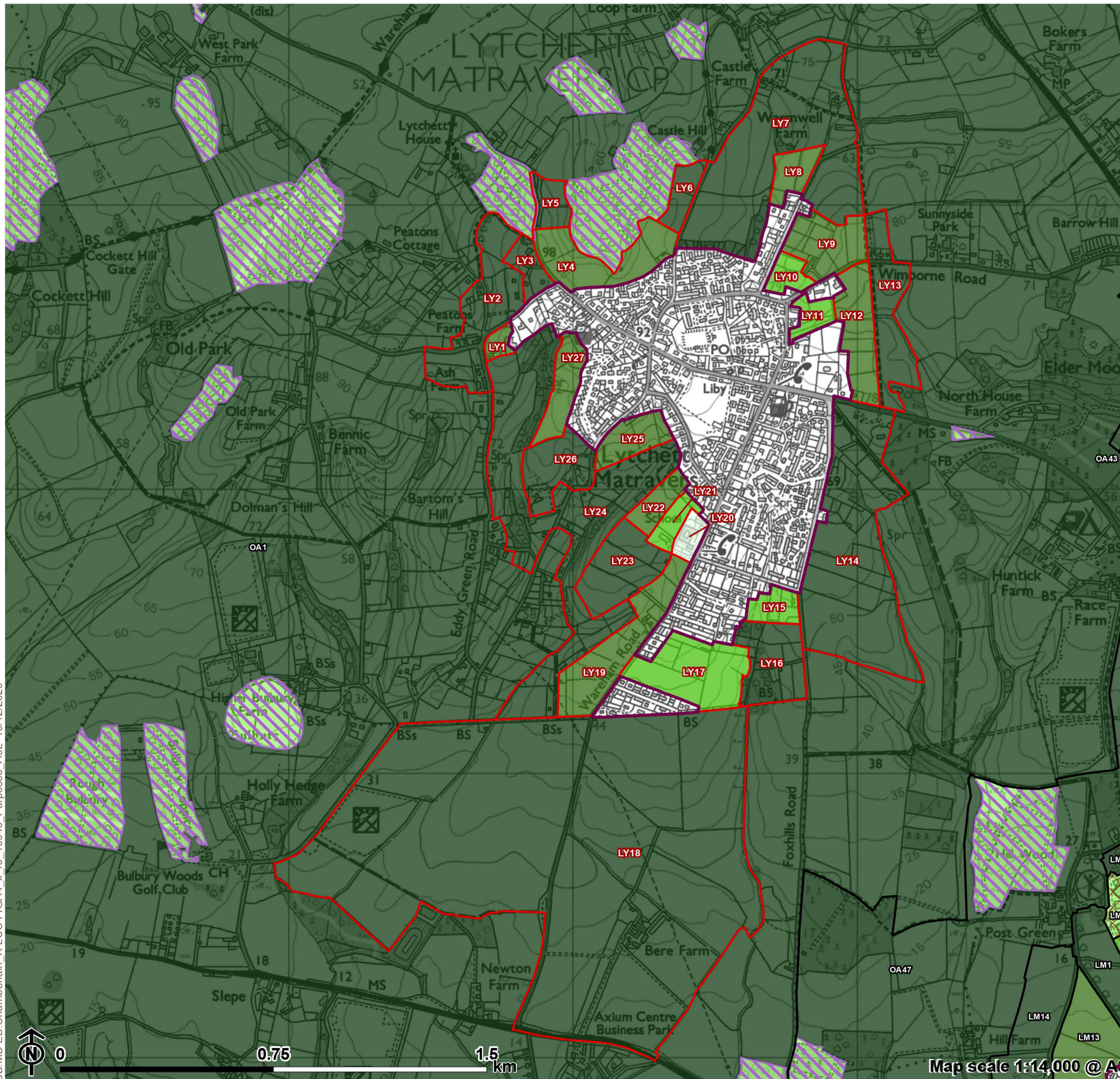


- - - Local Authority boundary
 - Inset area
 - Green Belt not assessed
 - ▨ Absolute constraint(s)
 - ▨ No openness
 - ▭ Lytchett Matravers parcel
 - ▭ Parcel
- Purpose 2 contribution**
- Strong
 - Relatively strong
 - Moderate
 - Relatively weak
 - Weak/No

CB:MB:EB:Chamberlain_K LUC FIGA3_x_r0_10946_Purpose2_A3L_15/12/2020

Figure A4.10

**Green Belt Purpose 3 Contribution:
Lytchett Matravers**

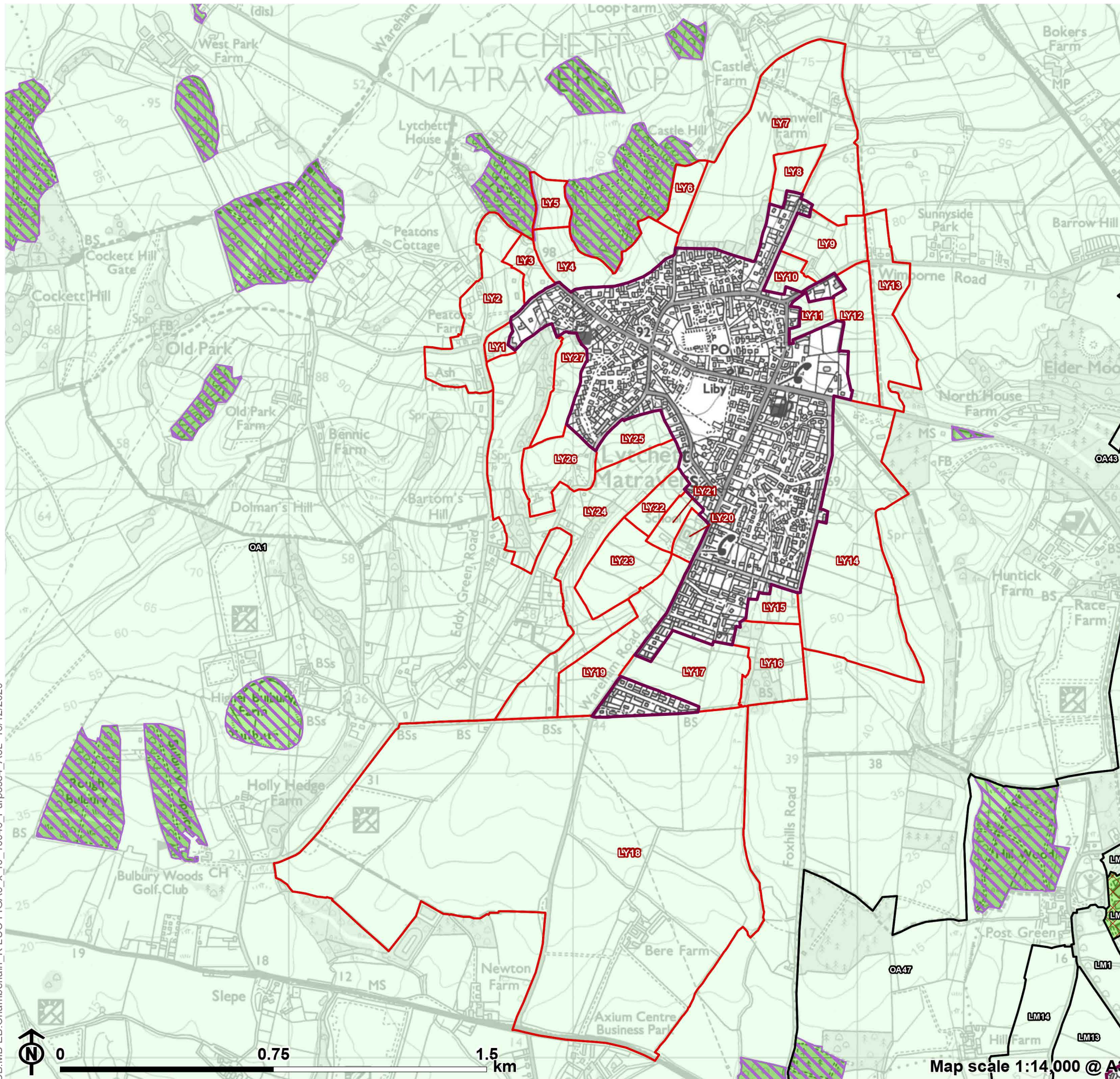


- Local Authority boundary
 - Inset area
 - Green Belt not assessed
 - ▨ Absolute constraint(s)
 - ▨ No openness
 - ▭ Lytchett Matravers parcel
 - ▭ Parcel
- Purpose 3 contribution**
- Strong
 - Relatively strong
 - Moderate
 - Relatively weak
 - Weak/No

CB:MB:EB:Chamberlain_K LUC FIGA4_x_r0_10946_Purpose3_A3L_15/12/2020

Figure A5.10

**Green Belt Purpose 4 Contribution:
Lytchett Matravers**



- - - - Local Authority boundary
 - Inset area
 - Green Belt not assessed
 - ▨ Absolute constraint(s)
 - ▨ No openness
 - ▭ Lytchett Matravers parcel
 - ▭ Parcel
- Purpose 4 contribution**
- Strong
 - Relatively strong
 - Moderate
 - Relatively weak
 - Weak/No

CB:MB:EB:Chamberlain_K LUC FIGA5_x_r0_10946_Purpose4_A3L_15/12/2020