

INVESTING IN GREEN PLACES

South East Dorset Green Infrastructure Strategy

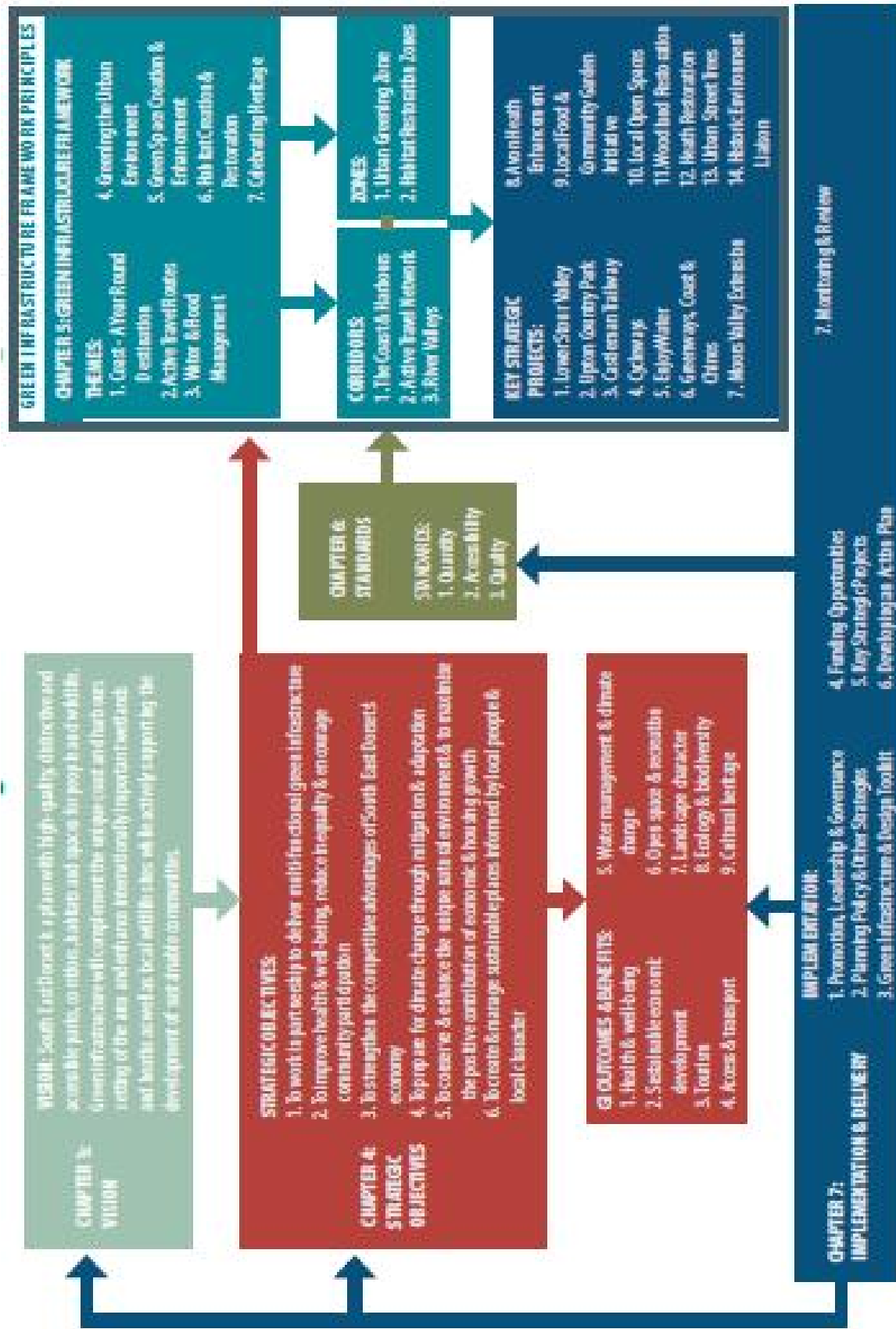
Final Version for Endorsement, July 2011

1	EXECUTIVE SUMMARY	3
2	INTRODUCTION.....	4
	Background and Context.....	5
	Role of the Strategy.....	6
	Summary of Legal and Policy Context.....	7
	Definition of Green Infrastructure.....	14
	Local Context.....	15
3	VISION	18
	A Vision for Green Infrastructure in South East Dorset.....	18
4	OBJECTIVES OF THE STRATEGY	20
	Strategic Objectives.....	20
	Green Infrastructure Outcomes and Benefits.....	20
5	GREEN INFRASTRUCTURE FRAMEWORK	25
	Corridors.....	25
	Zones.....	25
	Themed Initiatives.....	25
	Coast and Harbours.....	28
	Active Travel Network.....	28
	River Valleys Corridor.....	28
	Urban Greening Zone.....	28
	Habitat Restoration Zones.....	29
	Themes.....	31
	Theme 1: Coast - a Year Round Destination.....	32
	Theme 2: Active Travel Routes.....	33
	Theme 3: Water and Flood Management.....	35
	Theme 4: Greening the Urban Environment.....	36
	Theme 5: Green Space Creation and Enhancement.....	37
	Theme 6: Habitat Creation and Restoration.....	39
	Theme 7: Celebrating Heritage.....	41
6	STANDARDS.....	43
	Standards for Strategic Green Space in South East Dorset.....	43
	Defining Strategic Green Space.....	44
	Standards for Strategic Green Space.....	46
	Developing Priorities for Strategic Green Space.....	49
	Standards for Multi-Functional Green Infrastructure.....	50
7	IMPLEMENTATION AND DELIVERY	57
	Promotion, Leadership and Governance.....	57
	Planning Policy and Other Strategies.....	58
	Green Infrastructure and Design Toolkit.....	59
	Funding Opportunities.....	60
	Key Strategic Projects.....	62
	Developing an Action Plan.....	69
	Monitoring and Review.....	76
8	APPENDICES.....	77

Appendix 1: Strategic Green Space Sites 78
Appendix 2: Key Strategic Project Details 83

1 EXECUTIVE SUMMARY

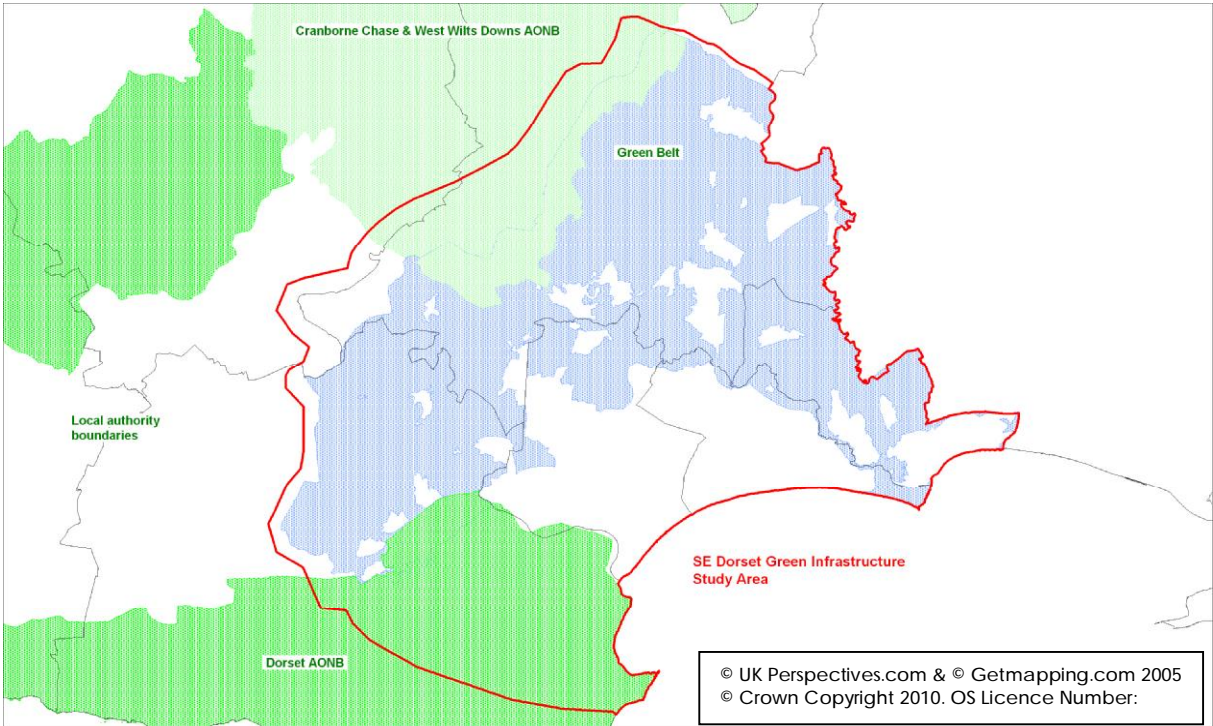
2 INTRODUCTION



Background and Context

- 2.1 Green infrastructure is about using the natural environment as a way to deliver services essential to quality of life. Green infrastructure can have many functions and offers ways to prepare for climate change, build economic success, manage flood risk, provide alternative active travel options, provide green spaces for exercise and socialising and conserve and enhance wildlife and habitats. Green infrastructure is a valuable asset and should be seen as a good investment offering a new approach rather than a drain on resources.
- 2.2 South East Dorset has a unique natural environment on which its economy relies. Maintaining and improving this valuable asset is an advantage in terms of a wider economic strategy for the area as well as the social and environmental benefits. In recognition of the value of green infrastructure, the Councils in South East Dorset¹ are working with the Environment Agency, Forestry Commission and Natural England to prepare a Green infrastructure Strategy for the area. The Strategy creates a bold vision for South East Dorset and sets a framework for high quality accessible green infrastructure. The Strategy is set at the strategic level and will provide a basis for the delivery of projects and a robust evidence base for other policy makers to draw upon.
- 2.3 The South East Dorset sub-region is defined in Map 1.

MAP 1 South East Dorset



¹ Bournemouth Borough Council, Christchurch Borough Council, Dorset County Council, East Dorset District Council, Borough of Poole and Purbeck District Council.

2.4 The Councils and partner organisations are being supported by CABI Space Enabling. This is a mentoring and knowledge transfer programme to support and challenge urban green space and public space and strategies. The Councils and partners have also jointly funded and appointed Dorset Environmental Records Centre to collate data on existing assets and Land Use Consultants to carry out the data analysis work.

Role of the Strategy

2.5 The Green Infrastructure Strategy has three key roles:

- to promote the multi-functional approach of green infrastructure across a wide range of agendas;
- to set out an overarching strategy to deliver, manage and maintain current and future green infrastructure assets;
- to guide a joint approach towards strategic green infrastructure for councils preparing local development framework documents.

2.6 These three elements of the Strategy will form part of the delivery mechanisms for the Strategy.

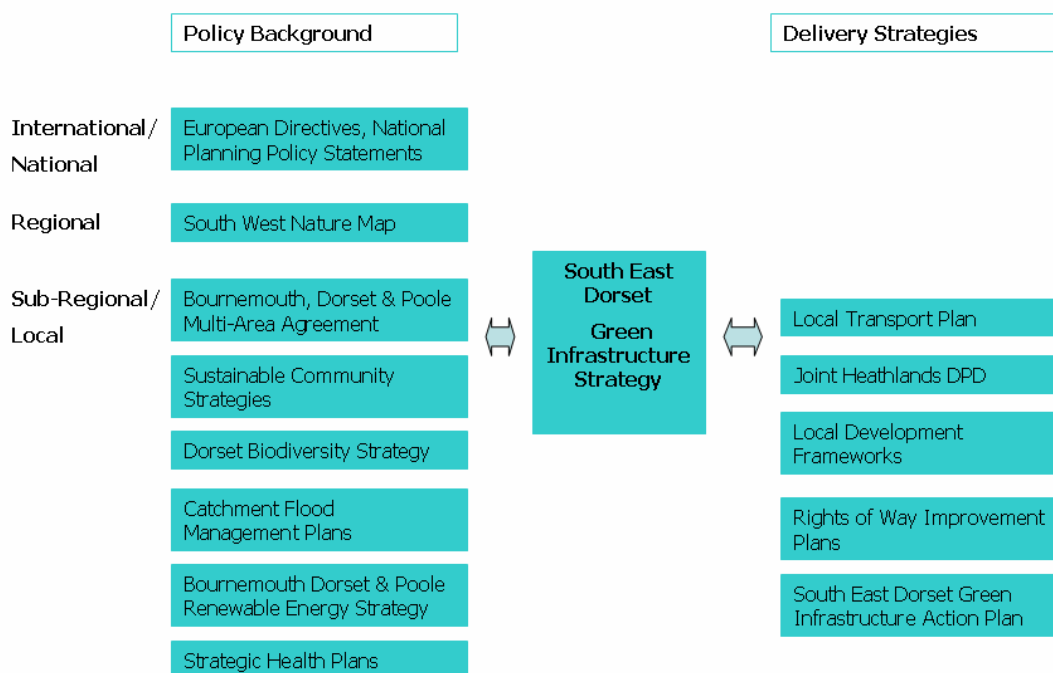
2.7 This document promotes the concept of green infrastructure and explains the benefits it can deliver. Green infrastructure is about using the natural environment to provide ways to deliver solutions. It can offer many functions and contribute to the delivery of sustainable communities, economic success, healthy active lifestyles, climate change, biodiversity and open space and recreation by joining up the work of a range of agencies. In South East Dorset, green infrastructure can specifically contribute to the objectives and targets of the Multi-Area Agreement for Bournemouth, Dorset and Poole and Sustainable Community Strategies. Delivery of the Strategy will also occur through Local Development Framework documents, the Local Transport Plan and Rights of Way Improvement Plans. Figure 2 shows the links between other plans and strategies which both influence and deliver green infrastructure.

2.8 The Strategy is about recognising the assets we already have and managing them in ways that contribute to a wider network of green infrastructure. It is about making the best use of the assets we already have in a cost effective way. There is also a need for some new green infrastructure to support growth of the population. Standards will be identified for strategic green space and other aspects of green infrastructure. These standards will guide new provision of green infrastructure and be reflected in improving and managing existing assets. In light of reduced funding levels, innovative approaches will

need to be considered to fund, manage and maintain new and existing assets. However, the use of green infrastructure offers the opportunity to make savings by co-ordinating resources and reducing spending elsewhere.

2.9 Each Council is preparing Core Strategy, Site Allocation and other Development Plan Documents that will include green infrastructure proposals. The Green Infrastructure Strategy will allow a consistent approach to be taken across boundaries by setting out a clear vision, objectives and framework. Alongside the Strategy, the Land Use Consultants Report (South East Dorset Green Infrastructure: Evidence and Opportunities Study) provides a consistent evidence base to support individual councils to prepare Development Plan Documents. Whilst the Strategy concentrates on strategic scale projects, it sets an overall approach within which small scale local projects can connect into a wider network.

Figure 1 Links to Other Plans and Strategies



Summary of Legal and Policy Context

European

2.10 A wide range of European Directives and international agreements are relevant to how green infrastructure is protected and managed:

- Conservation of Wild Birds, Council Directive 79/409/EEC (The Birds Directive)

- Conservation of Natural Habitats and of Wild Fauna and Flora, Council Directive 92/43/EEC (The Habitats Directive)
- Air Quality Framework Directive, 96/62/EC and daughter Directives 99/30/EC, 2000/69/EC and 2002/3/EC
- Water Framework Directive, 2000/60/EC
- Assessment and Management of Flood Risks, Directive 2007/60/EC
- The Ramsar Convention on Wetlands (1971)
- European Landscape Convention (EU, 2000).

National Policy

- 2.11 National policy and the legal framework cover issues as wide ranging as transport, health, biodiversity and climate change and are also relevant to green infrastructure. In planning, Planning Policy Statements (PPS) set out national policy for a range of issues. Those listed below show the range of issues that green infrastructure can contribute positively to.
- 2.12 PPS1 - Delivering Sustainable Development promotes planning policies that contribute to the delivery of sustainable development. Planning and Climate Change (supplement to PPS1) recognises the role of green infrastructure in mitigating and adapting to climate change, specifically in terms of urban cooling, sustainable drainage systems, and conserving and enhancing biodiversity. It also states that local authorities should expect new development to provide public and private open space as appropriate, recognising the opportunities for flood storage, wildlife and people provided by multifunctional green spaces.
- 2.13 PPS 5 - Planning for the Historic Environment sets out the Government's planning policies on the conservation of the historic environment. The PPS promotes the need for positive and proactive responses to the Historic Environment and a greater understanding of the significance of conserving and enhancing heritage assets.
- 2.14 PPS7 - Sustainable Development in Rural Areas sets out policies for rural areas, including country towns and villages and the wider, largely undeveloped countryside up to the fringes of larger urban areas.
- 2.15 PPS12 - Local Spatial Planning states that a core strategy should be supported by evidence of what physical, social and green infrastructure is needed to enable the amount of development proposed for the area. It also makes infrastructure planning a key part of a robust evidence base for a core strategy.
- 2.16 PPG 13 - Transport sets out the objectives to integrate planning and transport at the national, regional, strategic and local level and to promote more sustainable transport choices both for carrying people and for moving freight.
- 2.17 PPG17 - Planning for Open Space, Sport and Recreation recognises that well planned and maintained open spaces and good quality sports and recreational facilities can play a major part in improving people's sense of well being in the place they live. It requires local authorities to undertake audits of the existing provision of open space, sport, and recreational facilities, and to identify the existing and future needs for improved or new facilities.
- 2.18 PPG17 also establishes Government's belief that open space standards should be set locally, and should include quantitative, qualitative and accessibility components.

- 2.19 PPS22 - Renewable Energy sets out the approach to renewable energy and how its further implementation can contribute to all areas of sustainability.
- 2.20 PPS 25 - Development and Flood Risk ensures that flood risk is taken into account at all stages in the planning process.
- 2.21 The Flood and Water Management Act (FWMA) is key legislation for controlling flood risk. Lead Local Flood Authorities, such as Dorset County Council, will have responsibility for adopting, managing and maintaining Sustainable Urban Drainage systems (SUDs), a key feature in green infrastructure, for which some funding will be provided.
- 2.22 Good Practice Guide on Planning for Tourism is a note focusing on broad principles and general criteria that are relevant to most types of tourist development. Tourism is recognised to be of crucial importance to the economic, social and environmental well-being of the whole country.
- 2.23 Planning for a Natural and Healthy Environment is a draft PPS (March 2010) revising and consolidating parts of existing PPS7 (Sustainable Development in Rural areas), PPS 9 (Biodiversity and geo-conservation), PPG 17 (Open space, sport and recreation) and PPG20 (Coastal Planning). It provides national planning policy on the conservation and enhancement of the natural environment and the habitats and species it supports, green infrastructure open space and land and related facilities for sport, recreation and play.
- 2.24 The contribution the planning system can make to mitigating and adapting to climate change through the provision of well planned green spaces is recognised. A number of other benefits of strategic networks of green spaces, or green infrastructure, are also highlighted:
- 'ecosystems services' such as flood water storage, sustainable drainage, urban cooling and shading;
 - creating and enhancing wildlife and habitats and 'green corridors' for wildlife;
 - creating attractive and sustainable communities as well as links to the past and history of an area. The various roles of trees are specifically highlighted;
 - open space can serve as a vital focal point for community activities and plays a vital role in promoting healthy living and in the social development of children through sport and interaction;
 - quality of life and well-being of rural communities through access to local sports and recreation facilities;
 - countryside and coast provide opportunities for recreation.

2.25 Planning for a Low Carbon Future in a Changing Climate, also a draft PPS (March 2010), recognises the benefits green infrastructure can make in terms of preparing for the effects of climate change. Increases in summer temperatures and the risk of flooding and droughts are likely to have devastating consequences. Local authorities must, therefore, plan for climate change for both new development and in terms of adapting existing areas. Green infrastructure is identified as having a strong role. Local authorities are directed to plan for green infrastructure to optimise its many benefits, as part of wider networks, as this will support local biodiversity and healthy living environments through providing urban cooling, local flood risk management and local access to shady outdoor space.

2.26 The draft Marine Policy Statement (March 2010) indicates that marine and terrestrial spatial planning will need to be integrated. Marine planning has clear links to coastal habitats and activity.

Sub-National Policy

2.27 Planning policy at the regional level was to be provided by the Regional Spatial Strategy for the South West (RSS). The new government proposes to abolish Regional Spatial Strategies in the Decentralisation and Localism Bill. However, even if the proposal to abolish regional policy takes place, there is a continued need for local councils to plan for economic, housing and other needs and so a need for supporting infrastructure. Currently, there is consensus among the Councils of South East Dorset that it is important to consolidate and enhance the area's green infrastructure.

2.28 Whilst the RSS may no longer be taken forward, the approach it set out is supported by background evidence that can be used to develop local proposals. It is therefore, still relevant in broad terms for developing this Strategy. Key elements included:

- proposals about the general scale and location of new development in the Bournemouth and Poole Housing Market Area;
- a vision for the area that sought to transform Bournemouth and Poole town centres through new employment and high density housing growth;
- the need for Suitable Alternative Natural Green Space (SANGs) to relieve recreational pressure on the Dorset Heaths Special Protection Area;
- identifying green infrastructure as an integral part of development, including the provision of new areas of open space, not just more intensive use of existing spaces;

- recognising that a number of designated sites are at risk due to recreational pressure, including: Poole Harbour and the Avon Valley (both Ramsar and SPA sites) as well as the Dorset Heathlands SPA, the Dorset Heaths SAC and the Dorset Heathlands Ramsar (henceforth called the Dorset Heathlands) in South East Dorset. Just outside the area, the Isle of Portland to Studland Cliffs SAC and the New Forest SAC are also recognised as being particularly at risk;
- the need for planning and delivery of major development to provide for, amongst other things, amenity space and green infrastructure that meets community need and supports improved biodiversity. Green infrastructure is also recognised as a way to ensure high housing densities can result in good quality living environments;
- recognising the considerable reliance being placed on mitigation measures to prevent adverse effects on the integrity of many of the Natura 2000 and Ramsar sites. Further testing is needed at the local level and will need to be carefully monitored to ensure that actual outcomes are as anticipated.

2.29 At the Bournemouth, Dorset and Poole and local levels there a number of policy and strategy documents and programmes that will support green infrastructure. Also, green infrastructure is a way to help deliver the aims and objectives of these. Key sub-regional documents include:

- Multi-Area Agreement for Bournemouth, Dorset and Poole including the Green Knowledge Economy Strategy and Action Plan;
- Local Area Agreements for Bournemouth, for Dorset and for Poole;
- Sustainable Community Strategies for Bournemouth, for Dorset, for Poole and for District Council areas;
- Dorset Biodiversity Strategy, Poole Nature Conservation Strategy and Bournemouth Nature Conservation Strategy;
- Rights of Way Improvement Plans for Dorset and Bournemouth and Poole;
- Bournemouth, Dorset and Poole Renewable Energy Strategy;
- NHS Strategic Plans for Bournemouth and Poole and for Dorset;
- Catchment Abstraction Management Plans and Catchment Flood Management Plans for Dorset Stour, Frome, Piddle and Hampshire Avon;
- Shoreline Management Plan for Hurst Spit to Durlston Head;

- AONB Management Plans for Dorset and for Cranborne Chase and West Wiltshire Downs;
- Forest Design Plans for East Dorset, Purbeck Heath and Cranborne Chase Woodlands;
- South West Woodland and Forestry Framework (Forestry Commission, 2005) and Implementation Plan (2009-12) form key elements of the Government's sub-regional woodland and tree strategy
- emerging Marine Spatial Plans for Dorset (inshore and offshore).
- Bournemouth, Dorset and Poole Local Transport Plan 3 (LTP3). The South East Dorset Multi-Modal Study helped inform development options.
- Dorset Minerals and Waste LDF

Dorset Local Enterprise Partnership

2.29a On 20 May 2010 the Coalition Government published its 'Programme for Government' which included the creation of Local Enterprise Partnerships (LEPs). LEPs are joint local authority-business bodies brought forward by local authorities themselves to promote local economic development.

2.29b A prospectus for the Dorset Local Enterprise Partnership was submitted to Government on 28th June 2011 and was officially approved on 7th July. The partnership has been invited to form an LEP Board. The Dorset LEP area matches the area administered by the authorities of Dorset County Council (including the district/borough councils within the DCC Dorset area) and the two unitary authorities of Bournemouth Borough Council and Borough of Poole.

2.29c A key source of evidence which the LEP will use is the Local Economic Assessment for Bournemouth, Dorset and Poole (June 2011). This assessment notes that the environment gives Dorset a unique competitive advantage which complements aspirations to promote a green knowledge economy. It also refers to the importance of green infrastructure in supporting this objective.

2.29d The Local Economic Assessment (LEA) emphasises how Dorset's environment is crucial to tourism, an important part of the local economy. It notes that the comprehensive package of rural, coastal

and urban attractions distinguishes the sub-region's tourism industry and provides an opportunity to secure higher skilled and better paid tourism jobs. South East Dorset also possesses international gateways at Bournemouth International Airport and Poole Port.

2.29e Green infrastructure is a significant component of the area's tourism offer. Features such as harbourside parks, beaches, and linear parks all play a key role in attracting visitors and providing desirable links between places and facilities. It is also worth noting that, by helping to absorb the impact of new development upon habitats, green infrastructure supports economic growth and so its contribution to economic, social and environmental prosperity is an important one.

Definition of Green Infrastructure

2.30 The draft PPS on Planning for a Natural and Healthy Environment defines green infrastructure. It is proposed to adopt this definition:

Definition of Green Infrastructure

'Green infrastructure' is a strategic network of multi-functional green space, both new and existing, both rural and urban, which supports natural and ecological processes and is integral to the health and quality of life in sustainable communities. It delivers a broad range of functions and provides vital socio-economic and cultural benefits which underpin individual and community health and wellbeing.

These functions include: conserving and enhancing the natural environment; providing wildlife corridors; reducing noise and air pollution; and helping communities to adapt to a changing climate through water and carbon management. In urban areas, functions include providing routes (e.g. footpaths and cycleways) which link areas of open space within settlements; providing sustainable drainage, flood storage and urban cooling; and providing a wide range of opportunities for engagement and active citizenship, relaxation and quiet contemplation, sport, recreation and children's play.

Local Context

- 2.31 South East Dorset has a population of about 458,000 and includes the settlements of Bournemouth, Poole, Christchurch, Wimborne, Colehill, Corfe Mullen, Ferndown, Verwood, St Leonards and St Ives, West Moors, Upton and Wareham.
- 2.32 Generally, indicators of deprivation are low with few areas falling within the most deprived 10% in England. The exceptions are areas of Bournemouth that fall within the most deprived 10% in England in terms of the indexes of multiple deprivation and the specific health and disability index. Poole also has pockets of deprivation in terms of health and disability.
- 2.33 The environment is a key driver for the South West's economy. Tourism is a leading industry in South East Dorset. The coast and countryside are at the heart of the local economy. The extensive coastline, two harbours, maritime history and diverse marine environment are a major draw for visitors to the area. The links between the coast and main urban areas also support tourism. Despite the beautiful and varied countryside, Dorset's rural areas are the least visited part of the county.
- 2.34 Over 12% of the South West's economy relies on the land and landscape. Agriculture is a main source of income in many of South East Dorset's rural areas. There is extensive woodland and forest coverage in South East Dorset. This is a mosaic of coniferous plantations (mainly used for recreation) and semi-natural broadleaved woodland, some of which is ancient woodland, which has biodiversity and fuel value.
- 2.35 Traffic congestion continues to grow in the Bournemouth, Poole and Christchurch area affecting private vehicles and bus services. Bus services are the main public transport option in the conurbation but there is much less accessibility by public transport in rural areas.
- 2.36 South East Dorset is located on the coast with several main rivers running through the area and entering the sea at Poole and Christchurch Harbours. A number of locations are at risk of fluvial and/or tidal flooding. These include central Christchurch, north Bournemouth, Poole and Wimborne.
- 2.37 Several main rivers do not meet ecological or chemical water standards. Also, many rivers are at abstraction capacity.
- 2.38 Climate change predictions indicate that Dorset will be affected by hotter, drier summers and warmer, wetter winters alongside more extreme weather events – flash flooding, droughts, heat waves and storms and sea level rise. Observed changes over the last 40 years have shown these predicted changes are being experienced.

- 2.39 The open space network includes urban parks and gardens, large forest areas, attractive river valleys, extensive but fragmented heath and the coast. Between these areas lies a network of footpaths, bridleways and cycle paths but coverage varies.
- 2.40 There are several national and local cycle routes crossing the area, including: National Cycle Routes 2 (Dover to St Austell) and 25 (Poole to Longleat), Poole Heritage cycle route, Bourne Valley Greenway and North Dorset Trailway.
- 2.41 There are also a number of waymarked walking routes and bridleways including: South West Coastal Path, Stour Valley Way, Castleman Trailway, Avon Valley Path, Wareham Forest Way.
- 2.42 Most of the area falls within the Dorset Heaths national landscape character area. Areas around the northern, eastern and southern edges fall within the Dorset Downs and Cranborne Chase, New Forest and South Purbeck national landscape character areas respectively.
- 2.43 Two Areas of Outstanding Natural Beauty - Dorset and Cranborne Chase and West Wiltshire Downs - are located in South East Dorset. The coast immediately to the west is known as the Jurassic Coast. It is a world heritage site designated for its geodiversity and forms a distinctive coastal landscape and supports rare and important plants and animals.
- 2.44 Much of the area falls within the Dorset Heaths Natural Area. This is a lowland heath habitat which is recognised as being of international importance. Other significant habitats are the wide river valleys of Frome, Piddle, Avon, Allen and Stour, broadleaved ancient woodland, arable and pasture farmland and the coastal zone. The other natural areas are the South Wessex Downs and Isles of Portland and Purbeck.
- 2.45 The area has nine overlapping internationally designated nature conservation sites including the Dorset Heaths, Avon Valley, Poole Harbour, Isle of Portland to Studland Cliffs and Studland Dunes. Other designations for nature conservation exist across the area.
- 2.46 Evidence of human settlement in South East Dorset exists from as early as 10,000BC. This includes indications of busy ports, hill forts and manor houses from antiquity to the more recent past. Many of these historic landmarks are still visible within the landscape and help to shape the identity of the area.
- 2.47 Key heritage features are:
- natural heritage features associated with heathland, ancient woodland and the Jurassic Coast World Heritage Site.

- 262 scheduled ancient monuments scattered mostly in the rural areas, including: Hengistbury Head, Badbury Rings, and Royal Naval Cordite Factory.
- National Trust properties, listed and other important buildings.
- 10 parks and gardens of historic interest.

3 VISION

A Vision for Green Infrastructure in South East Dorset

- 3.1 South East Dorset is a place with high-quality, distinctive and accessible parks, corridors, habitats and spaces for people and wildlife. Green infrastructure will complement the unique coast and harbours setting of the area and enhance internationally important wetlands and heaths as well as local wildlife sites while actively supporting the development of sustainable communities.
- 3.2 By 2030 the cross boundary partnership has worked with local communities to create a South East Dorset where:
- the green infrastructure network plays an important role in making the area resilient to climate change. Street trees and urban greening schemes assist in cooling and shading urban areas as well as making places safe, sustainable and attractive. Natural flood schemes in the Stour, Avon, Frome, Piddle and Allen valleys help to reduce flooding in urban areas downstream. These main rivers and the wider river systems offer potential to carry out enhancement of wetland habitats. Grasslands of biodiversity value, particularly neutral and acid grasslands provide an important natural resource across the area. These grasslands are mostly small and fragmented and their conservation is essential as part of the mosaic of habitats. Care will be required that these sites are surveyed and not damaged, for example by tree planting. Sustainably managed community woodlands provide multifunctional uses for recreation, biodiversity benefits, as well as a source for wood-fuel.
 - the unique environment within and surrounding the urban area, including Studland Bay, Poole Bay and Harbour, Christchurch Harbour, the Dorset Heathlands, the Purbeck ridge and scarp slopes, AONBs and heritage features, is conserved and enhanced. These natural assets form part of the multi-functional green infrastructure network and set the context for sustainable urban growth which does not adversely impact upon this unique environment.
 - the towns and villages of South East Dorset are connected to a network of green spaces and corridors providing space for play, recreational activity, relaxation, reflection and growing food. Local people are proud of this network and use it regularly to take part in healthy exercise and so benefit from good physical and mental health. A variety of places exist for people of all ages to come together.

- the local economy continues to benefit from a high quality natural and built environment. A growing green knowledge economy respects and makes use of the natural and historic assets. Forestry, woodland, agriculture and local food initiatives are also growing contributors to the economy.
- the historic landscape and wildlife are thriving. Access to sensitive locations is well managed. The pressures placed on and fragmentation of the Dorset Heathlands by urban populations are reduced by the regular use of new attractive green spaces. Semi natural habitats are expanded and enhanced, including the range of wetland habitats along the Frome, Piddle, Avon, Allen and Stour valleys. Heathland, Woodland, Chalk Downland and Coastal habitats are thriving.
- key assets such as local landscapes, the beaches, the Stour Valley, Upton Country Park and Moors Valley Country Park are valued by local people and visitors to the area. They form part of the green infrastructure network and are connected by the Castleman Trailway, Dorset Coast Path, Stour Valley Way, Wareham to Upton Cycleway as well as other high quality walking, cycling and horse riding routes and public rights of way. These together with improvements to the Dorset Cycle Network and public transport hubs offer desirable alternatives to the car for travel.

4 OBJECTIVES OF THE STRATEGY

Strategic Objectives

4.1 Green infrastructure is critical to the aim of creating sustainable communities and meeting the challenges of climate change. It harnesses the natural environment, offers ways to secure solutions for a range of economic, social and environmental issues and make optimal use of space through its multi-functions. The South East Dorset Green Infrastructure partners have the following overarching aims in terms of delivering the Strategy:

- 1. To work in partnership to deliver multi-functional green infrastructure;
- 2. To improve health and well-being, reduce inequality and encourage community participation;
- 3. To strengthen the competitive advantages of South East Dorset's economy;
- 4. To prepare for climate change through mitigation and adaptation;
- 5. To ensure that the economic and housing growth that takes place is matched by green infrastructure to conserve and enhance the unique natural environment;
- 6. To create and manage sustainable places informed by local people and local character.

Green Infrastructure Outcomes and Benefits

4.2 The Green Infrastructure Strategy aims to create a multi-functional network of green infrastructure for South East Dorset. The following are identified as the benefits of an adequately resourced and well managed green infrastructure asset for South East Dorset.

GI Outcomes	Benefits of well designed GI
<p>1. Health and Well-being</p> <p>To help improve quality of life for communities in South East Dorset by providing 'green lungs',</p>	<ul style="list-style-type: none"> • creates cooler microclimates making towns and cities more pleasant in hot weather (reducing the urban heat island effect through evaporative cooling, shading and providing corridors for cooler air to flow into urban areas) • improves air quality by filtering out pollutants • provides free, easy and attractive opportunities for

GI Outcomes	Benefits of well designed GI
<p>comprising an extensive network of green infrastructure and green spaces for wildlife and people. Providing for access to nature as well as opportunities for active and passive recreation particularly in socially deprived areas. Measures to adapt to and mitigate climate change are also beneficial for health.</p>	<p>recreation and physical activity</p> <ul style="list-style-type: none"> • helps to reduce stress, improve mental health and help recovery of chronic diseases through enjoyment of open space and nature • provides safe, easily accessible green routes for walking and cycling. Active travel is one of the easiest ways to exercise • provides space to grow fresh food • reduces crime (and the perception of crime) through natural surveillance in well-used public spaces.
<p>2. Sustainable Economic Development</p> <p>To support the local economy by maintaining and creating attractive places for inward investment and desirable business locations as well as encouraging rural regeneration. Increasing the amount of land which can be used by communities to grow local food, including a network of allotments and community gardens, is also important.</p>	<ul style="list-style-type: none"> • increasing green space can lead to an increase in average house prices in an area • attractive landscape design encourages businesses to relocate to and stay in a place • good green spaces and landscape design improve an area's image and encourage inward investment (but as secondary role to workforce skills, innovation and connectivity) • quality of the immediate office environment is of most interest to high-value added, knowledge intensive industry • high quality, accessible green spaces can support a more productive workforce by improving health, alleviating stress and increasing motivation • the green infrastructure 'sector' is a major employer nationally • providing food, timber and industrial crops (e.g. biofuels).
<p>3. Tourism</p> <p>To support and provide further sustainable opportunities for the area's key tourist industry by opening up and increasing access</p>	<ul style="list-style-type: none"> • a high quality environment encourages tourism • makes places more attractive and gives them a better image

GI Outcomes	Benefits of well designed GI
<p>and mobility to wider areas for people to explore and enjoy. The coastline, harbours and inland countryside are key assets for the tourism sector.</p>	
<p>4. Access and Transport</p> <p>To enhance overall access, mobility and connectivity within the green infrastructure network, in particular from existing and new urban areas, from areas deficient in green space, and in areas of deprivation, to help promote social inclusion. This includes prioritisation and promotion of transport systems that offer alternatives to cars.</p>	<ul style="list-style-type: none"> • provides safe, easily accessible green routes for walking, cycling and horse riding • active travel routes can help with fitness and reduce car dependency. • Provides for the needs of disability groups and those with mobility problems
<p>5. Water Management and Climate Change</p> <p>To ensure that the green infrastructure network achieves its potential in providing flood and water management, local climate control, dispersing air pollution and filtering water to enhance quality, and therefore supporting opportunities for climate change adaptation.</p>	<p>Helps adapt to the effects of climate change by:</p> <ul style="list-style-type: none"> • creating cooler microclimates and reducing the need to cool buildings • creating cooler microclimates and making towns and cities more pleasant in hot weather • storing and intercepting rainwater and encouraging natural drainage, to prevent flooding. Woodland, heathland, wetland and parkland can all slow down run off • storing river flood water to reduce the risk of fluvial flooding e.g. through the restoration of floodplains • providing shelter and protection in extreme weather. <p>Mitigates climate change by:</p> <ul style="list-style-type: none"> • absorbing and storing carbon • reducing travel by providing local recreation opportunities

GI Outcomes	Benefits of well designed GI
	<ul style="list-style-type: none"> • providing walking and cycling routes to reduce carbon emissions from vehicles • supplying biomass to directly replace fossil fuels • supplying timber to replace less sustainable construction materials • increasing local food production to reduce food miles.
<p>6. Open Space and Recreation</p> <p>To reduce open space deficiency in existing and new communities, ensuring all open space provision is high quality, attractive and safe, and that recreational pressure on the Dorset Heaths is alleviated through the provision of Suitable Alternative Natural Green Spaces (SANGS). Maximising opportunities along the less sensitive stretches of coast is a key objective as it is well used and accessible to large numbers of people.</p>	<ul style="list-style-type: none"> • providing free, easy and attractive opportunities for recreation • providing local recreation opportunities • encouraging community cohesion through bringing people together and using green spaces for social events • providing places for growing food locally • high quality, accessible green spaces can support a more productive workforce by improving health, alleviating stress and increasing motivation
<p>7. Landscape Character</p> <p>To maintain and enhance landscape quality and condition, ensuring that the green infrastructure network appropriately reflects landscape character, heritage assets and historic landscapes, context and sense of</p>	<ul style="list-style-type: none"> • reflects a setting for the wider landscape character of the area • provides a recreation and visitor resource and helps to divert pressure from landscapes which are sensitive

GI Outcomes	Benefits of well designed GI
place.	
<p>8. Ecology and Biodiversity</p> <p>To conserve and enhance existing biodiversity assets, whilst increasing the potential of the green infrastructure network to provide space and corridors for wildlife, particularly new areas of heathland habitat which can be colonised by Dorset heathland species.</p>	<ul style="list-style-type: none"> • provides greater extents of planned wildlife habitat within urban and rural areas • provide new and alternative opportunities for biodiversity • creates sound ecological networks through green corridors between otherwise isolated areas of wildlife habitat and reverses habitat fragmentation • provides a recreation and visitor resource and helps to divert pressure from landscapes which are sensitive • provides a biodiverse landscape that is far more desirable than an urban desert.
<p>9. Cultural Heritage</p> <p>To protect, conserve and enhance South East Dorset's cultural heritage. In part this might involve the provision of appropriate interpretation of key features for the benefit of local communities and visitors to the area.</p>	<ul style="list-style-type: none"> • reflects a setting for the wider landscape character and cultural heritage of the area • provides safe, easily accessible green routes for walking and cycling.

5 GREEN INFRASTRUCTURE FRAMEWORK

- 5.1 The multi-functional Green Infrastructure Framework is the heart of the Strategy. A framework of green infrastructure will help to make connections for people, wildlife and the environment. Green infrastructure will complement the unique coast and harbours setting of the area and enhance internationally important wetlands and heaths as well as local wildlife sites while actively supporting the development of sustainable places. The previous sections set out the vision and objectives for the Strategy. This section sets out geographic features and core principles forming the Strategy which are identified as the Green Infrastructure Framework. From this, the key priorities for green infrastructure can be identified.
- 5.2 The Framework takes account of the key issues that the Strategy should try to address, as well as the vision and objectives set out in previous sections. The principles will inform policy makers and those delivering projects on the ground. Figure 1, which acts as the Executive Summary, shows the links between the vision and objectives, the framework and the projects delivering the Strategy.
- 5.3 The Framework is made up of geographic elements of corridors and zones. The principles of the Framework are identified as themes. Map 2 shows in diagrammatic form the main geographic elements of the Framework as it is expected to develop. Further details of these and the themes are set out in the following paragraphs.

Corridors

- The Coast and Harbours
- Active Travel Network
- River Valleys

Zones

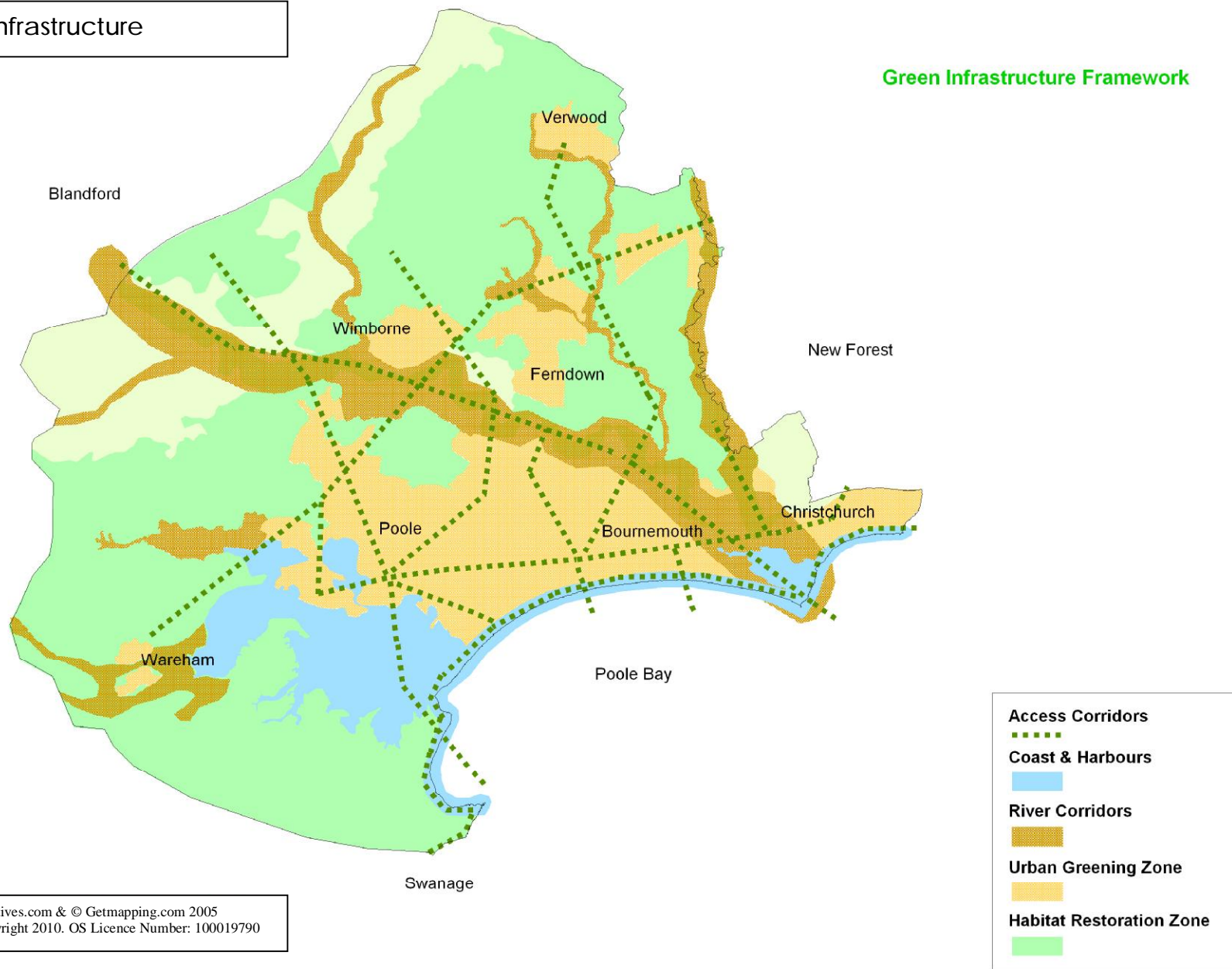
- Urban Greening Zone
- Habitat Restoration Zones:

Themed Initiatives

- Coast – A Year Round Destination
- Active Travel Routes
- Water and Flood Management
- Greening the Urban Environment

- Green Space Creation and Enhancement
- Habitat Creation and Restoration
- Celebrating Heritage

Map 2 Green Infrastructure



© UK Perspectives.com & © Getmapping.com 2005
© Crown Copyright 2010. OS Licence Number: 100019790

Coast and Harbours

- 5.4 The Coast and Harbours corridor includes Poole and Christchurch harbours and the coast and its beaches between Studland and Christchurch.
- 5.5 The coast, beaches and harbours are existing green infrastructure assets and provide an opportunity to enhance recreation and access to nature on a year round basis. These locations also include sensitive habitats which need to be conserved and enhanced. The two objectives need to be balanced. The framework identifies the coast and harbour as key elements. Enhancements will include improving the public realm and creating stronger links with the access network to encourage people to arrive at the coast by walking and cycling.

Active Travel Network

- 5.6 The Active Travel Network will link main commuting destinations within the Urban Greening Zone. These are Poole, Bournemouth, Christchurch, Wimborne and Wareham town centres and the major employment areas of Bournemouth Airport and Ferndown. Main recreation routes will also be linked into the network. These are the Castleman Trailway, Dorset Coastal path, Stour Valley Way and Wareham to Upton Cycleway as well as enhancing the north south links between the conurbation, the countryside to the north and coast to the south. Linking up to the North Dorset Trailway would represent one such enhancement. Many of these routes fulfil both a recreational and commuting function. The chines provide potential links to the coast.
- 5.7 The Active Travel Network gives the opportunity to encourage the greater use of alternative modes of travel such as cycling and walking for commuting and recreation. Cycling and walking also offer benefits in terms of physical and mental health and in terms of reducing congestion and air pollution.

River Valleys Corridor

- 5.8 The river valleys of the Rivers Stour, Frome, Piddle and Avon and their tributaries are identified as corridors, subject to the sensitivity of certain habitats. River valley recreational routes should be carefully planned to ensure that banks are not damaged and important aquatic species and bird populations are not unduly disturbed.
- 5.9 The river valleys offer the opportunity to enhance and create new areas of open space, recreation routes, habitat restoration, wildlife corridors and flood management.

Urban Greening Zone

5.10 The Urban Greening Zone is the main built up area of the South East Dorset conurbation. It includes all areas, including residential, business and town centre, in Bournemouth, Poole, Christchurch, Wimborne, Colehill, Corfe Mullen, Ferndown, Verwood, St Leonards and St Ives, West Moors and Wareham.

5.11 Within the urban greening zone the opportunities for green infrastructure investment are focused on two priorities:

- creating an active travel network, which promotes cycling and walking over less sustainable transport modes. Details are set out above.
- enhancing semi-natural habitats and integrating small scale green infrastructure within both existing urban areas and new development.

Habitat Restoration Zones

5.12 The South West Nature Map identifies habitats of importance and their extent at the landscape scale. Conservation at a landscape scale focuses on restoring the underlying ecological functions that maintain species populations within the habitats of concern. By increasing habitat patch size, quality, concentration in the landscape, and the ecological permeability of intervening land, we can help species to 'percolate' through the landscape, increasing immigration and emigration rates, and reducing population isolation and vulnerability.

5.13 Four habitats are identified in South East Dorset for expansion and restoration. These have been translated into zones for restoration and are shown on Map 2. The four zones are:

- Woodland Restoration Zone
- Lowland Heath Restoration Zone
- Coastal and Floodplain Grazing Marsh Restoration Zone
- Chalk Downland Restoration Zone

Woodland Restoration Zone

5.14 This zone relates mainly to UK BAP Priority Habitat type Lowland Mixed Deciduous Woodland but also Wet Woodland and to a lesser extent Lowland Beech and Yew Woodland.

5.15 Woodlands have suffered severe loss of area and are generally highly fragmented, albeit with some concentrated expanses on river valley sides and scarp slopes. Despite past losses woodland contributes substantially to landscape identity. Woodlands offer great scope for expansion of native broadleaved species, and can be restored or

recreated on a wide range of soils and landforms. Restoration of semi-natural canopies to Plantations on Ancient Woodland Sites (PAWS) is a particular opportunity.

5.16 Two main areas are identified as priorities for woodland restoration:

- north east of Wimborne Minster and west of Holt Heath
- between Lytchett Matravers and Bloxworth north of the B3067.

Lowland Heath Restoration Zone

5.17 This zone relates to the UK BAP Priority Habitat type Lowland Heathland. Lowland heath is characterised by the presence of plants such as heather, dwarf gorses, and cross-leaved heath and is generally found below an altitude of 300 metres. Areas of good quality heathland should consist of an ericaceous layer of varying heights and structures, some areas of scattered trees and scrub, areas of bare ground, gorse, wet heaths, bogs and open water. Acid grassland is often an important component. The presence and numbers of characteristic birds, reptiles, invertebrates, vascular plants, bryophytes and lichens are important indicators of habitat quality. Dorset contains a key concentration of the remaining UK lowland heathland resource.

5.18 The areas identified as priorities for restoration are:

- mainly centred on and extend the Dorset Heaths SACs;
- in and around Wareham Forest north of the Piddle valley;
- on the Isle of Purbeck, for example, in the large areas of forestry plantation named Wytch Heath, Rempstone Heath and Newton Heath;
- west of the urban areas at Ferndown and West Moors and around the current Holt Heath SSSI;
- north of Bournemouth Airport where there are several large forestry blocks.

Coastal and Floodplain Grazing Marsh Restoration Zone

5.19 This zone relates to UK BAP Priority Habitat type Coastal and Floodplain Grazing Marsh. Grazing marsh describes a number of coastal and riparian landscapes. It is defined as periodically inundated pasture, or meadow with ditches which maintain the water levels, containing standing brackish or fresh water. The ditches can be especially rich in plants and invertebrates. Almost all areas are grazed and some are cut for hay or silage. Sites may contain seasonal water-filled hollows and permanent ponds with emergent swamp communities, but not extensive areas of tall fen species like reeds, though fen and reed swamp

communities may be embedded within them. Grazing marshes are particularly important for the number of breeding waders such as snipe, lapwing and curlew they support. Internationally important populations of wintering wildfowl also occur including Bewick swans and whooper swans.

5.20 The areas identified as priorities for restoration are:

- valley of the River Allen as far south as Wimborne Minster;
- valley of the River Avon including Christchurch Harbour;
- valleys of the Piddle and Frome including Poole Harbour;
- valley of the River Stour, consistent with the approach in the Stour Valley Project.

Chalk Downland Restoration Zone

5.21 This zone relates to UK BAP Priority Habitat type Calcareous Grassland. Lowland calcareous grasslands occur on shallow lime-rich soils generally overlying limestone rocks, including chalk. These grasslands are now largely found on distinct topographic features such as escarpments or dry valley slopes and sometimes on ancient earthworks in landscapes strongly influenced by the underlying limestone geology. More rarely, remnant examples occur on flatter topography over chalk. The definition of calcareous grasslands covers a range of plant communities in which lime-loving plants are characteristic. Lowland calcareous grasslands support a very rich flora including many nationally rare and scarce species such as the bastard toadflax, *Thesium humifusum* and the dwarf sedge, *Carex humilis*. The invertebrate fauna is also diverse and includes scarce species like the adonis blue *Lysandra bellargus*, the silver-spotted skipper *Hesperia comma*, and the Duke of Burgundy fritillary *Hamaeris lucina*. These grasslands also provide feeding or breeding habitat for a number of scarce or declining birds including stone curlew *Burhinus oedicnemus* and skylark *Alauda arvensis*.

5.22 The cover of lowland calcareous grassland in the region has suffered a sharp decline over the last 50 years, being highly vulnerable to agricultural improvement. Dorset is a major UK concentration of this habitat.

5.23 The chalk area known locally as the Purbeck Ridge, along high ground in the far south west in the general area between Corfe Castle and Studland and incorporating Nine Barrow Down, is identified for restoration.

Themes

5.24 The themes set out the core principles for the Green Infrastructure Framework. These principles guide the development of existing and new green infrastructure in South East Dorset.

Theme 1: Coast - a Year Round Destination

Purpose To promote the coast to local residents as a year round alternative destination for recreation and access to nature.

Context and Issues The coast is a very important feature of South East Dorset’s natural and semi natural environment. The areas designated for nature conservation should be conserved and enhanced. Key features include Poole Harbour SPA and RAMSAR, Poole Bay Cliffs and Christchurch Harbour SSSIs, Isle of Portland to Studland Cliffs SAC, Dorset Heaths (Purbeck and Wareham) SAC and Studland Dunes SAC. SNCIs along the coast are also a key feature.

Climate change predictions for Dorset point to hotter, drier summers and warmer, wetter winters alongside more extreme weather events and sea level rise. Erosion and flooding is likely to damage coastal amenities and infrastructure as well as beaches.

Planned growth for the area will increase demand for green infrastructure. There are existing deficiencies of green space in Bournemouth, Christchurch and Poole. There are also hot spots of deprivation – multiple, health and disability, especially in Bournemouth and Poole. For many of the areas, existing green space assets are the internationally designated nature conservation sites of the Dorset heathlands where recreational pressure is affecting the sensitive habitat of the heathland. Green infrastructure provision will also help alleviate recreational pressures on wildlife sites in general.

The coast is one of South East Dorset’s natural assets that are vital to the area’s economy. However, many local residents and visitors to the coast arrive by car. This is due to poor access by cycling, and walking particularly in rural areas. It can lead to high levels of traffic congestion.

Policy Drivers Sustainable Communities, Biodiversity, Economy and Tourism

Opportunities Developing and promoting alternative places for recreation and access to nature will help to reduce the pressure on the Dorset Heaths and other sensitive habitats and landscapes. The seafront area is already a major tourist draw in high season. There is an opportunity to better celebrate South East Dorset’s special and valued coastline throughout the year.

The coast of from Studland to Christchurch will be promoted as a year round location for recreation and access to nature. Measures will continue to conserve and enhance designated nature conservation areas. Increasing activity at the coast should not put extra pressure on sensitive coastal habitats. Outside these sensitive areas, measures to enhance the coast should take a long-term approach to offer high quality facilities for residents and visitors alike to attract them to the coast all year round. The following will be made along the seafront and other coastal locations:

- making improvements to the public realm and environmental quality;
- including natural measures to reduce flood risk and provide coastal defence as part of green space;
- creating key gateways to the coast. This includes providing clearly signed walking, cycling and public transport links so residents and visitors will be able to enjoy the coast without using a car;
- providing information about important heath, maritime cliff and slope and woodland habitats and diverse geological heritage such as Poole Bay Cliffs SSSI and Studland Cliffs SSSI;
- developing the seafront area to educate about low-carbon lifestyles by including example features;
- continuing tourist, art and community events at key gateway locations.

Priorities Existing gateways would be priority locations. These are Studland, Wareham Quay, Poole Quay, Poole Head, Durley Chine, Bournemouth Pier, Boscombe, Southbourne, Highcliffe, Hengistbury Head, Christchurch Harbour/Mudford Quay

Also need to create links from the urban areas to the coast using the chines such as Flag Head Chine, Branksome Chine, Branksome Dean Chine, Alum Chine, Durley Chine, and Chewton Bunney.

Theme 2: Active Travel Routes

Purpose To create an active travel network of routes for commuting and for recreation beyond the conurbation.

Context and Issues High levels of traffic congestion affect areas of South East Dorset. This detracts from the attractiveness of the area and has a negative effect on the local economy.

There is poor access to green space, countryside and coast by public transport, walking and cycling. This is a particular problem in the more rural areas.

There are also hot spots of deprivation – multiple, health and disability - in Bournemouth and Poole and, to a lesser degree, in Christchurch.

Policy Drivers Sustainable transport, Climate change adaptation/mitigation, economy, health

Opportunities A sustainable transport network for commuting and recreation, particularly where active travel is used, will have economic, environmental and health benefits. This is vital in terms of improving the quality of life and environment.

There is the opportunity to use new and existing cycle routes, green corridors and green spaces to create an improved network for commuting and recreation. Routes and infrastructure for cyclists and pedestrians to key work, shopping and recreational destinations will need to be enhanced to create a network that is attractive to users. Links should also be made to public transport hubs.

Within the Urban Greening Zone the focus of the network will be commuting routes. The key element for improving commuting routes and infrastructure will be to improve and develop new routes between major employment centres and the conurbation

Beyond the Urban Greening Zone, the focus of the network will be to improve recreational routes. The opportunity is also there to improve corridors for wildlife. Recreation routes should link into the commuting network. The key elements are:

- to make continuous and link the Castleman Trailway, Dorset Coastal path, Stour Valley Way and Wareham to Upton Cycleway;
- to enhance north south links between the conurbation, the countryside to the north and coast to the south;
- to develop a complete round Poole Harbour walking and cycling route, subject to the sensitivity of certain designations and habitats.

Priorities The active travel network should prioritise routes to/from Poole, Bournemouth, Christchurch, Wimborne and Wareham town centres and the major employment areas of Bournemouth Airport and Ferndown.

Boscombe West, East Cliff and Springbourne, Strouden Park,

Kinson South and Central are wards in Bournemouth with multiple deprivation or health and disability deprivation scores in the 10% most deprived in England. Poole Town is a ward in Poole with health and disability scores in the worst 10%. These locations will also be priority locations for improving the Active Travel Network. Also, there are pockets of multiple deprivation in Poole and Christchurch that are amongst the 20% most deprived in England.

Recreational routes should prioritise existing rights of way and take opportunities to invest in new links and use roads where necessary.

Theme 3: Water and Flood Management

Purpose To provide natural measures to improve water quality, manage water quantity and to reduce the risk of flooding for urban areas located downstream.

Context and Issues Central Christchurch, north Bournemouth, Poole and Wimborne are particularly at risk of fluvial and/or tidal flooding.

Diffuse water pollution from agriculture and erosion threaten the quality of water bodies. All rivers in the area are identified as having poor ecological status. Also, the Stour and Frome rivers have poor chemical status.

Many rivers are at abstraction capacity but there is continued demand for water resources.

Policy Drivers Climate Change adaptation/mitigation, Water management

Opportunities In terms of managing flood risk, there are three complementary water management functions that green infrastructure is able to provide: slowing down (reducing run-off), infiltration (reducing run-off volume) and storage.

There is the opportunity to identify flood risk management measures that are not simply engineering solutions but also give benefits in terms of conserving and enhancing habitats and providing green space.

The Stour, Frome, Piddle, Allen and Avon valleys offer opportunities to provide natural measures to reduce the flood risk to urban areas downstream. Natural measures for reducing flood risk will include:

- bank-side flood storage to manage water flow during

- times of peak and low flow.
- re-establish broadleaved woodland to improve the replacement of underground water stores.

Natural flood schemes should also consider the need to restore floodplain habitats for waterfowl and waders but also local fish populations and fishery interests.

New native trees and woodlands in suitable locations can improve water quality and quantity as well as alleviating and slowing the rate of flooding. As well as water management, woodlands offer opportunities to contribute to other objectives in terms of biodiversity, timber, carbon storage and access to nature.

New development should incorporate opportunities for multi-use green infrastructure. For example, sustainable drainage and greywater systems should be integrated into new developments and retrofitted into existing areas.

Priorities Christchurch, Poole and Wimborne are particularly at risk from fluvial and/or tidal flooding.

Theme 4: Greening the Urban Environment

Purpose To enhance semi-natural habitats and small scale green infrastructure in the urban greening zone.

Context and Issues There are existing identified deficiencies of green space in Bournemouth and Poole and the amount and quality of private green space is reducing.

The predicted effects of climate change of hotter, drier summers and warmer, wetter winters alongside more extreme weather events – flash flooding, droughts, heat waves and storms - and sea level rise will affect wildlife and habitats. Increased temperatures will also alter how people carry out their day to day lives.

Policy Drivers Creating sustainable communities, Climate change adaptation/mitigation, Biodiversity

Opportunities Enhancing semi-natural habitats and small scale green infrastructure brings a number of benefits to existing and new urban areas in the urban greening zone. For example, it helps to create attractive places, provide access to nature, improve ecological connectivity and contribute to climate change adaptation through urban cooling, slowing down run-off and reducing energy use. Trees and urban woods have a

particular role to play in these.

New development should be planned and designed to include semi-natural and multi-functional green infrastructure features. Wherever possible planting should be of native species. Also, where an opportunity arises, existing urban areas should be enhanced. Such features include:

- developing small scale green infrastructure elements such as: planting street trees and creating urban woods, promoting green roofs, walls and bridges;
- the use of sustainable drainage systems (incorporating habitat features such as ponds, reed beds and wetland vegetation types);
- encouraging mowing regimes to foster development of meadow grasslands in green spaces,
- planting native species rather than standardised alien species.
- providing for nesting and roosting sites for sparrows, swifts and bats in new build features and adding to existing buildings

The Councils will develop guidance on how to include multi-functional green infrastructure in planning and designing for new development through a Green Infrastructure and Design Toolkit. This will include guidance on masterplanning, the early inclusion of green infrastructure into the design of a project, planting for safety and natural surveillance and the need to involve the local community will be promoted in the toolkit.

Priorities Prioritise areas which currently suffer from a poor quality living environment and where residents have less access to gardens.

Locations where there are opportunities to create 'Green corridors' for people and wildlife should also be a priority.

Theme 5: Green Space Creation and Enhancement

Purpose To provide a range of new or expanded multi-functional and attractive green space within and adjoining the urban area.

Context and Issues Planned growth for the area will increase demand for green infrastructure. Local authority audits identify that there are deficiencies of green space in Bournemouth, Poole and Christchurch. There are also hot spots of deprivation – multiple, health and disability - particularly in Bournemouth and Poole. For many of the areas existing green space assets are the international designations of Dorset heathlands where

recreational pressure is affecting the sensitive habitat of the heathland.

The coast is one of South East Dorset's natural assets and is vital to the area's economy. However, many local residents and visitors to the coast arrive by car. This is due to poor access by cycling and walking particularly in rural areas. It leads to high levels of traffic congestion.

The green infrastructure audit identified open space deficiency and health deprivation within the Poole/Bournemouth/Christchurch conurbation. This deficit should be met. The planned new growth will also place extra demand for new green space. For example, demand for allotments currently exceeds supply in many areas.

Policy Drivers Sustainable Communities, Health, Biodiversity, Sustainable Transport

Opportunities Green space is an important element of infrastructure to support the health and well-being for both the existing and new population. It is important to recognise existing assets and make sure they are of high quality and connect with other assets to form a Green Infrastructure Framework. New green space should be provided as part of a multi-functional green infrastructure package. For example, new native woodland can play a key element in green space provision. Woodland is a robust habitat that can help to reduce visitor pressure on other ecologically sensitive sites. Native woodland restoration and expansion should therefore be pursued for the wide range of benefits it can offer.

New urban extensions and other development should also deliver multifunctional green infrastructure which connects into the South East Dorset Green Infrastructure Framework. The proposed urban extension at Christchurch is one such opportunity, where green infrastructure is an integral element of the master-planning process.

Where deficiencies exist new green space opportunities should be planned:

- at a strategic level, the Stour Valley Project and extensions to Upton Country Park and Moors Valley Park will partly address the existing deficiency. Further opportunities for green space and access to nature are the coast and Wareham Forest.
- at a local level, authorities should aim to identify sites within the conurbation where there is potential to create new green space. Where it is not feasible to deliver

green spaces within the urban area of 2ha or more in size, the green space provided should meet local quality standards.

Creating new Suitable Alternative Natural Green Spaces (SANGS) is one way to reduce recreational pressure on sites where ecological sensitivity is high. Sites must be carefully designed to offer a similar visitor experience to large extensive semi-natural heathland sites which are much valued by residents. To be effective, SANGS must be supported by measures such as ranger staff and education outreach work. Restored mineral sites offer potential locations for SANGS. Also, a network of local open spaces linked by an active travel network can act as alternatives to reduce pressure on ecologically sensitive sites.

Allotments and community gardens are important assets. New provision should be sought. Allotments tend to have single plots where individuals grow their own food and community gardens are a single piece of land tended collectively by a group of people. Both bring benefits in terms of growing affordable fresh produce locally, improving health through diet and exercise and creating a place for social interaction.

Priorities Areas of open space deficiency. The green infrastructure audit identified open space deficiency and health deprivation within the Poole/ Bournemouth/Christchurch conurbation.

Areas most reliant upon heathlands and other sensitive habitats for green space provision.

Boscombe West, East Cliff and Springbourne, Strouden Park and Central are wards in Bournemouth with health and disability deprivation scores in the worst 10% in England. Poole Town is a ward in Poole with health and disability scores in the worst 10%.

Areas of deficiency for allotments and community gardens should be priority locations for these.

Theme 6: Habitat Creation and Restoration

Purpose To conserve, create and connect the wildlife habitats important to South East Dorset – Woodland, Coastal and Floodplain Grazing Marsh, Lowland Heath and Chalk Downland – to contribute to a coherent and resilient ecological network, reduce biodiversity loss, and achieve social and economic benefits.

Context and Issues It is important to stop the decline of wildlife rich habitats to maintain biodiversity. Many nature conservation sites are in poor condition. Wildlife is threatened because habitats have become fragmented, functional ecosystem processes are disrupted and the viability of some wildlife populations are threatened by climate change. Lowland Heath in South East Dorset is threatened by pressures from recent and new urban growth and human activity such as travel causing air pollution and recreation visitors.

Policy Drivers Biodiversity, Climate Change, Sustainable Communities.

The South West Biodiversity Action Plan sets targets for maintaining and enhancing the region's distinctive habitats and species.

The Dorset Biodiversity Strategy ensures that national targets for species and habitats (as specified in the UK BAP) are translated into effective action at the local level.

The Environment Agency's Frome Rehabilitation Plan and Avon Restoration Strategy are designed to deliver measures for the restoration and creation of habitat. Similar projects for the Moors River and Lower Stour are under consideration.

Opportunities The South West Nature Map identifies the habitats of importance and their extent at the landscape scale. Four habitats are identified in South East Dorset for expansion and restoration. These have been translated into zones for restoration.

Developing a coherent and resilient ecological network for South East Dorset will include:

- Core areas: the most important habitats containing source populations of the rarest and/or most vulnerable species e.g. the Natura 2000 network, SSSIs, SNCIs and LNRs. These areas should be managed, buffered, linked and enhanced;
- Enhancement areas: land of moderate to low ecological value but which could benefit from enhancement measures e.g. urban parks and areas of intensive agriculture to the north of the area;
- Areas for creation and restoration: land having potential for large-scale habitat creation e.g. former quarries, areas of semi-improved pasture, planted ancient woodland, conifer plantations on former heathland, canalised sections of rivers and streams and opportunities for native woodland creation;

- Wildlife corridors: linear habitats and habitat ‘stepping stones’ which would promote species dispersal across the area.

Priorities The South West Nature Map identifies the best areas in the South West Region to conserve, create and connect wildlife habitats at a landscape scale.

Theme 7: Celebrating Heritage

Purpose To link key heritage features of the landscape and townscape into the Green Infrastructure Framework.

Context and Issues Natural and built historic features form part of the unique environment and history of South East Dorset. Many features form part of the wider landscape and townscape setting and contribute to the existing green infrastructure network.

A number of pressures, such as development pressures, changing farming practices and the cost of repair and restoration affect heritage features.

Policy Drivers Creating Sustainable Communities, Landscape and Townscape.

Opportunities There is the opportunity to make stronger links between heritage features of the landscape, seascape and townscape and the Green Infrastructure Framework by widening the range of functions of the setting of key historic features. Examples include recreation, flood schemes and biodiversity.

Swanage Railway, Poole Harbour, Holton Heath, Badbury Rings and Kingston Lacy, Wimborne Minster and Christchurch Priory, Hengistbury Head and Corfe Castle are key heritage features located in South East Dorset. Measures to link such features into the green infrastructure framework include:

- working with heritage stakeholders and landowners (such as the National Trust) to incorporate multiple functions into landscape settings.
- linking key heritage features into the green infrastructure network through with walking and cycling routes. Promoting recreational routes that give information about the surrounding landscape.

Old and significant individual ancient trees resonate with the history of the landscape and form markers in the lives of individual people and communities. Ancient trees can also provide niche habitats and contribute to the urban

environment. Ancient, veteran and notable trees should be identified, protected and celebrated as part of the area's living cultural and landscape heritage.

Priorities The key heritage features listed form the priorities.

6 STANDARDS

- 6.1 Standards are positive planning tools for providing high quality green infrastructure assets and for its long term management. It is important that standards set for spatial planning purposes are also used by local authorities and others who manage and maintain existing green spaces and green infrastructure.
- 6.2 Standards for green space provision are well developed. Standards for green infrastructure are less so.
- 6.3 Standards for green space are relevant in terms of quantity, quality and accessibility. Natural England's Accessible Natural Greenspace Standard (ANGSt) is a nationally recognised standard for green space provision in terms of quantity and accessibility. Green Flag and Blue Flag are national level standards for quality in terms of parks and green spaces and beaches. Service Standards cover a range of core facilities and services that visitors should expect to find at different types of park, reserve or other destination site. Natural England has developed visitor service standards for National Nature Reserves, Country Parks and Local Nature Reserves.

Standards for Strategic Green Space in South East Dorset

- 6.4 PPG17 assessments have been undertaken by individual unitary and district councils:
- Bournemouth and Poole: Sport and Recreation Facilities Assessment Report (May 2008)
 - Bournemouth Borough Council - Green Spaces Strategy 2007-2011
 - Christchurch Borough Council and East Dorset District Council - Open Space, Sport and Recreation Study (May 2007)
 - Borough of Poole – Open Spaces Strategy (December 2004)
 - Purbeck District Council - Sport and Recreation Audit and Assessment.
- 6.5 The method and output may vary but these assessments give details of the green space assets for each local authority area and the evidence on which to base green space standards.
- 6.6 A number of studies on green space and heathlands are also relevant to standards and include:
- Access Patterns in South East Dorset. Dorset Household Survey and Predictions of Visitor Use of Potential Green Space Sites (Footprint Ecology, 2008)

- Poole Growth Point Green Infrastructure Audit (Land Use Consultants, 2008).

6.7 In terms of local green space, local standards and related developer contributions will be set at individual local authority level. However, there is the opportunity to develop a joint methodology to ensure future assessments of green space are consistent across South East Dorset. The approach should promote different standards for urban and rural areas.

6.8 Strategic green space will meet the needs of a wider catchment area than individual local authority areas. Standards for strategic green space are therefore identified in this Strategy. These will ensure that a consistent approach is applied across South East Dorset. Standards for strategic green space are defined for:

- the quantity of provision per 1000 population;
- accessibility – the population within a threshold distance of travel. Whether parts of the population are outside the accessibility distances for relevant types of strategic GI. This will identify deficiency areas for us to prioritise new or invest in existing assets;
- quality - A set of standards relating to Accessibility, Safety, Maintenance and Management, Welcome, Design, Community Involvement and Multi-functionality. Site managers should work towards these standards and identify those sites that require investment to meet quality standards.

Defining Strategic Green Space

6.9 The first stage in defining standards for strategic green space is to define and identify what is strategic green space. To define strategic green space the following criteria are relevant:

- size: Sites over 100 hectares and those sites meeting the majority of the remaining criteria. This recognises that in urban areas smaller sites can meet the demands of a wide catchment population;
- linear features: Linking at least one strategic site to:
 - another strategic site; or
 - a key destination (such as a town centre) and/or
 - which act as a vital green space for a large catchment population.
- public access: Sites with unrestricted public accessibility;

Accessibility Level	Description
---------------------	-------------

Unrestricted	Sites have unrestricted public access although some sites may have limitations to access between dusk and dawn.
Limited	Sites may be publicly or privately owned but access is limited either by a physical barrier such as membership, or a psychological barrier such as a feeling that an open space is private.
Not accessible	Sites are out of bounds to the general public.

Source: Walsall Greenspace Strategy 2006-2011 (other definitions are available)

- wider than local catchment: Sites attracting visitors from a distance of more than 5km. Footprint Ecology research for South East Dorset residents suggests a significant drop off in visitors for all types of greenspace – parks and gardens, heathlands, rivers and other after 5km. Visitors to the coast appear to be willing to travel 15km and more;
- destination attraction: Sites acting as destinations for visits lasting typically 2 to 4 hours and more;
- visitor numbers: Sites attracting high numbers of visitors;
- range of facilities: Sites offering a good range of facilities e.g. sports facilities, refreshments, toilets, interpretation, seating, activities and events, educational opportunities and volunteering;
- type of site: typically strategic sites will be country parks and estates, seafront and waterfront, beaches and chines, woodlands and community forests, open access sites, strategic and long distance trails.

6.10 Taking account of the criteria to define strategic green space, a number of sites have been identified. These are listed in Appendix 1. This includes:

- sites covering 6,897 hectares, of which 6,061 hectares are Sites of Special Scientific Interest (SSSIs) or internationally designated sites for nature conservation;
- 26.7 kilometres of beaches;
- strategic linear routes, some of which stretch beyond South East Dorset;
- key sites serving South East Dorset residents but outside the area or with managed access (These sites are not included in the calculations).

6.11 Further work will be undertaken to complete the sections on quantity and accessibility below to take account of the consultation exercise.

Standards for Strategic Green Space

Quantity

6.12 The current provision for South East Dorset is 6,897 hectares of strategic green space. This equates to a provision of 15 hectares per 1,000 population.

6.13 However, 88% of this (over 6,000 hectares) is covered by SSSI or international designations. This has implications for the usability of strategic green space and means that accessibility to it has to be carefully managed. As a consequence, the remaining 12% may have added user pressures placed on it.

Accessibility

6.14 A 5km buffer will be drawn around the strategic green space sites to determine whether there are areas of deficiency in terms of accessibility.

6.15 The highly protected nature of much of the area’s strategic green space means that accessibility may need careful management. It will be important, therefore, to promote Sites of Alternative Natural Green Space (SANGS) and to improve links to other strategic sites.

6.16 A consequence of this is that smaller urban green space sites will take on added significance in terms of meeting the needs of residents. This is one of the reasons why local open space is listed as a strategic project in this Strategy (refer to Appendix 2, project 10).

Issues about Strategic Site Provision and Nature Conservation Sites

6.17 Given the proportion of strategic sites designated as nature conservation sites a grading approach has been used to identify sites to be managed in line with their ecological sensitivity. Other less ecologically sensitive sites will continue to be managed to attract residents and visitors. This approach also helps to identify the sites on which to concentrate future investment. Three grades are identified and details are set out for individual sites in Appendix 1.

Grading	Characteristics
Grade 1 Strategic Green Space Investment Sites	<ul style="list-style-type: none"> • Unrestricted public access • High levels of facilities for residents and visitors • Low ecological sensitivity • Manage to continue or improve public access and levels of facilities

Grade 2 Potential Strategic Green Space Investment Sites	<ul style="list-style-type: none"> • Some restrictions to public access • Medium levels of facilities for residents and visitors • Low/medium ecological sensitivity • Potential to improve public access and levels of facilities
Grade 3 Sites Managed for Nature Conservation	<ul style="list-style-type: none"> • Some managed public access • Low levels of facilities for residents and visitors • High ecological sensitivity – national and international designations • Manage public access to the benefit of ecological assets.

Quality

6.18 A set of standards relating to Accessibility, Safety, Maintenance and Management, Welcome, Design, Community Involvement and Multi-functionality. Councils and site managers should work towards these standards where relevant to a specific site and identify those sites that require investment to meet quality standards. These standards include generic and specific requirements for different types of sites. However, it is not the intention to create sites with identical characteristics; there should be flexibility to reflect the local natural environment.

Generic – applies to all sites	
Accessibility – how accessible it is, both to reach and to navigate within	<ul style="list-style-type: none"> • Access suitable for all • Paths/rights of way – good access suitable for all abilities, using surface and other materials appropriate to the local context • Ease of access between external housing/streets and internal paths • Linkages to other green spaces/corridors • Public transport access • Car parking, but a level of provision which encourages users to consider alternative means of transport, other than the car.
Safety – how safe it is and how safe it feels to be in	<ul style="list-style-type: none"> • Flow of people through the park to achieve self surveillance • Availability of alternative routes and exits in all parts of the open space to avoid entrapment • Evidence of persistent vandalism and other anti-social behaviour • Level of informal surveillance from neighbouring properties
Management &	<ul style="list-style-type: none"> • General 'cared for' appearance

<p>maintenance – how well it is managed and maintained</p>	<ul style="list-style-type: none"> • Maintenance appropriate to character and use • Appropriate management and maintenance of parkland trees • Location, condition and repair of site furniture - litter bins, seats, signs and other infrastructure • Design, location and repair of lighting • Cleanliness of site re litter and dog fouling • Maintenance of footpath surfaces • Maintenance and definition of boundaries • Vandalism and graffiti occurrence
<p>Welcoming – how welcoming the site is, including signage and the appearance of entrances</p>	<ul style="list-style-type: none"> • Entrances attractive and welcoming and well maintained, visible and accessible for all • Signs within the open space well designed and informative • Ambiance - Rating as an attractive place to be
<p>Design – how well designed it is to fulfil its function and to enhance the surrounding area</p>	<ul style="list-style-type: none"> • Is its design appropriate to its use • Views within the space • Balance of areas of shade and light • Contribution to look of the neighbourhood
<p>Community involvement – the level of community involvement with the site.</p>	<ul style="list-style-type: none"> • Capacity of site to provide opportunities for community involvement • Provision of educational / interpretation for the community • Involvement - Evidence of community involvement taking place
<p>Multi-functionality existing and potential - Ability of site to deliver on a number of themes</p>	<ul style="list-style-type: none"> • Health and well being • Sustainable economic development • Tourism • Access and transport • Water management and climate change • Open space and recreation • Landscape character • Ecology and biodiversity • Cultural heritage

<p>Specific requirements – the test of multi-functionality</p>	
<p>Outdoor sports - capacity to provide for active recreation and outdoor sport</p>	<ul style="list-style-type: none"> • Grass sports pitches -Management and maintenance of grass pitches • Artificial sports pitches / courts - Management and maintenance of artificial pitches & courts • MUGAS - Management and maintenance of MUGAS • Wheels Parks - Management and maintenance of wheels parks • Informal active recreation/play provision - Management and maintenance of informal active recreation areas

	<ul style="list-style-type: none"> • Sports building - Management and maintenance of sports buildings
<p>Built features / hard landscape – the quality of hard landscape features</p>	<ul style="list-style-type: none"> • Hard surface areas/walls/seating - Design/usability • Shelter/Open buildings - Condition • Café/public buildings - Design/usability • Café/public buildings - Condition/maintenance • Toilets - Condition/maintenance • Art/sculptures - Appropriate provision and maintenance
<p>Formal designed landscape – the quality of formal horticulture</p>	<ul style="list-style-type: none"> • Design, layout, quantity of both soft and hard landscape treatment • Condition and maintenance of soft and hard landscape treatment
<p>Natural & semi-natural features – the ability of the site to provide natural and semi-natural environments and to deliver improved levels of biodiversity</p>	<ul style="list-style-type: none"> • Population composition of trees appropriate to the site • Management and maintenance of trees • Population composition appropriate to the site (Primary and secondary) • Management and maintenance of woodland compartment and edge • Management of meadows/unimproved grassland areas • Management of rhynes ponds for biodiversity • Management of streams for biodiversity • Management of wetlands for biodiversity • Positive Management for species diversity or protection
<p>Ecosystem services – the contribution that the site makes to ecosystem services ie. cooling, drainage etc.</p>	<ul style="list-style-type: none"> • Sustainable Urban Drainage • Cooling • Adaptation • CO₂ reduction

Developing Priorities for Strategic Green Space

6.19 The partnership will identify priorities for investment in strategic sites and areas requiring new sites by taking account of the quantity, accessibility and quality standards. The Green Infrastructure Framework sets out the core principles and priorities of the Strategy and these should be taken into account when identifying priorities for investment. The grading approach gives an initial view on this prior to a full assessment of the quality of sites. This information will also provide a basis on which to determine a levy for strategic green infrastructure.

Standards for Multi-Functional Green Infrastructure

6.20 Standards for other aspects of multi-functional green infrastructure will need to be determined. It is proposed to use existing standards, but some flexibility will be required to reflect the needs of the local natural environment and circumstances. Where no standards can be found, relevant guidance is listed. Examples are set out below:

		Coast – Year Round Destination	Active Travel Network	Water & Flood Management	Greening the Urban Environment	Green Space Creation &	Habitat Creation & Restoration	Celebrating Heritage
Beach	Blue Flag A prestigious, international award scheme acting as a guarantee to tourists that a beach or marina they are visiting is one of the best in the world. It is awarded to coastal destinations achieving the highest quality in water, facilities, safety, environmental education and management. http://www.blueflag.org.uk/default.asp	ü						
Nature Conservation	Maintain nationally designated habitats in a favourable condition. Maintain non-statutory habitats and wildlife sites in a favourable condition.	ü		ü				
Strategic Green Space	Standards or quantity, accessibility and quality defined by this Strategy.	ü				ü		
Local Green Space / Open Space	Standards for quality, accessibility and quantity defined by local open space or local planning documents. It is proposed that the quality standards for strategic green space are also adopted for local green space / open space.	ü				ü		
Active Travel	Cycle Design Standards LTN 02/08 Cycle Infrastructure Design (Department for Transport, 2008) London Cycling Design Standards (Transport for London, 2005) Connect2 Greenway Design Guide (Sustrans, 2010)	ü	ü					

		Coast – Year Round Destination	Active Travel Network	Water & Flood Management	Greening the Urban Environment	Green Space Creation &	Habitat Creation & Restoration	Celebrating Heritage
	The National Cycle Network - Guidelines and Practical Details issue 2 (Sustrans, 1997) Making Ways for the Bicycle - A guide to construction of traffic-free paths (Sustrans, 1994)							
Water Quality	Water Framework Directive All water bodies need to achieve good ecological status or potential. http://wfdconsultation.environment-agency.gov.uk/wfdcms/en/southwest/Intro.aspx			ü		ü	ü	
Flood Risk	Building a better environment: A guide for developers - Practical advice on adding value to your site, Environment Agency, 2006. http://www.environment-agency.gov.uk/static/documents/Leisure/1_GETH1106BLNE-e-e(1).pdf PPG25: Development and flood risk			ü				
Sustainable Urban Drainage	Code for Sustainable Homes National standard for sustainable design and construction of new homes. Standards are set out for categories including: Energy/CO2, Water, Materials, Surface Water Run-off, Waste, Pollution, Health and well-being, Management, Ecology. http://www.planningportal.gov.uk/uploads/code_for_sust_homes.pdf			ü	ü			
Design	CABE Building for Life Criteria to promote design excellence and celebrate best practice in the				ü			

		Coast – Year Round Destination	Active Travel Network	Water & Flood Management	Greening the Urban Environment	Green Space Creation &	Habitat Creation & Restoration	Celebrating Heritage
	house building industry. The 20 Building for Life criteria embody CABI's vision of functional, attractive and sustainable housing.							
Design	Code for Sustainable Homes National standard for sustainable design and construction of new homes. Standards are set out for categories including: Energy/CO2, Water, Materials, Surface Water Run-off, Waste, Pollution, Health and well-being, Management, Ecology. http://www.planningportal.gov.uk/uploads/code_for_sust_homes.pdf				ü			
Street Tree Canopy	80 trees per kilometre of road Biodiversity by Design: A guide for sustainable communities, TCPA, 2004 pg 18				ü			
Native Plant Species	Horticultural Code of Practice, DEFRA Advice and guidance on safe use, control and disposal of invasive non-native plants for everyone involved in horticulture and activities that involve the use of plants.				ü	ü		
SANGS	Suitable Alternative Natural Green Space standard, Natural England 8-16 hectares per 1000 people (the standard identified by Natural England for Thames Basin Heaths. Further development of the standard will take place as part of the joint Heathlands DPD). Heathlands DPD					ü	ü	
Parks & Green Spaces	Green Flag Award The national standard for parks and green spaces in England, Wales and Scotland and recognises and rewards the best green spaces in the					ü		

		Coast – Year Round Destination	Active Travel Network	Water & Flood Management	Greening the Urban Environment	Green Space Creation &	Habitat Creation & Restoration	Celebrating Heritage
	<p>country. The Green Flag Award® welcomes parks/green spaces to apply for three awards: Green Flag Award, Green Pennant Award or Green Heritage Site Accreditation.</p> <p>Sites are judged against eight key criteria relating to a welcoming place; healthy, safe and secure; clean and well maintained; sustainability; conservation and heritage; community involvement; marketing; and managing. http://www.keepbritaintidy.org/GreenFlag/Default.aspx</p>							
Natural Green Space	<p>Natural England’s Accessible Natural Greenspace Standard (ANGSt) This advocates that every home should be:</p> <ul style="list-style-type: none"> • within 300 m of an accessible natural green space of at least 2 ha, plus: • at least one accessible 20 ha site within 2 km • at least one accessible 100 ha site within 5 km • at least one accessible 500 ha site within 10 km. <p>Woodland Trust Woodland Access Standard The trust promotes the opening up more woods to public access, and the creation of woods close to where people live. A Woodland Access Standard has been developed that the trust believes every local authority should meet. This says that:</p> <ul style="list-style-type: none"> • no person should live more than 500m from at least one area of accessible woodland of no less than 2ha in size; and • there should also be at least one area of accessible woodland of 				ü	ü	ü	

		Coast – Year Round Destination	Active Travel Network	Water & Flood Management	Greening the Urban Environment	Green Space Creation &	Habitat Creation & Restoration	Celebrating Heritage
	no less than 20ha within 4km (8km round-trip) of people’s homes							
Access to Nature	Natural England Visitor Service Standards Visitor service standards for three distinct types of natural green space: National Nature Reserves (particularly sites with high visitor numbers under management), Country Parks and Local Nature Reserves. These cover a range of core facilities and services that visitors should expect to find at each site type. It may be possible to adapt these to apply to other green space typologies. www.naturalengland.org RSPB VisitEngland’s Visitor Attraction Quality Assurance Scheme (VAQAS) aimed at ensuring a high quality visitor experience on their reserves.					ü	ü	
Forests	UK Forestry Standard Defines the government’s requirements for sustainable forest management and link to the Guidelines for Forests and: Landscape, Historic Environment, Biodiversity, Soil, Climate Change, People and Water. http://www.forestry.gov.uk/ukfs					ü	ü	
Ancient Trees	BS 5837:2005 Recommendations for Trees in Relation to Construction Provides guidance on the retention and protection of veteran trees in relation to development.						ü	ü

		Coast – Year Round Destination	Active Travel Network	Water & Flood Management	Greening the Urban Environment	Green Space Creation &	Habitat Creation & Restoration	Celebrating Heritage
	<p>English Nature’s ‘Veteran Trees: a Guide to Good Management’ (Read, H, 2000). Provides valuable guidance on the care of ancient trees.</p> <p>Woodland Trust and Ancient Tree Forum Producing a series of more detailed guides on the care of ancient trees.</p>							
Heritage Features	PPS5: Planning for the Historic Environment							ü
Equality	<p>Equality Impact Assessments Delivery mechanisms and projects should be assessed in terms the likely effects upon sections of the community in terms of race, gender, disability, faith, sexuality and age.</p>	ü	ü	ü	ü	ü	ü	ü

7 IMPLEMENTATION AND DELIVERY

7.1 The Strategy will be delivered through a number of strands of activity:

- promotion, leadership and governance;
- translating the Strategy into planning policy documents and other relevant strategy and investment documents;
- identifying funding opportunities for existing and future green infrastructure assets;
- key strategic projects;
- planning and co-ordination through an Action Plan.

Promotion, Leadership and Governance

7.2 The success of the Strategy depends upon the commitment of a wide range of bodies, strong leadership and co-ordination. A wide range of partners have developed the Strategy and an even wider set of partners will be involved in its delivery. A strong partnership and dedicated resources are required to drive and co-ordinate the delivery of the Strategy and action plan effectively.

7.3 The Strategy has been developed by a number of local authorities and environment partners. The approach has consisted of an Officer Steering Group and involvement of Council Members through stakeholder events and the Dorset and South Wiltshire Planning and Transportation Liaison Committee at key stages. The partners will investigate the options for strengthening the partnership and identifying dedicated resources to progress and co-ordinate delivery of the Strategy. There are a number of options for the partnership to develop to enable delivery and long term management of green infrastructure assets. The options set out below will be considered against some key principles:

- maximising the ability to deliver;
- cost effectiveness;
- engaging with local communities.

Current arrangements	Community Interest	Charitable Trust	Contracted Operations
----------------------	--------------------	------------------	-----------------------

	Company		
<p>Direct provision and management of services but needs dedicated resources</p> <p>Funded by council tax and income from public use of assets. Developer contributions are collected for transport and heathland mitigation.</p>	<p>Manages and maintains neighbourhood and cultural facilities</p> <p>Can trade to provide additional income</p> <p>May hold assets through leases or freehold</p> <p>Funded by external public and private investment, council tax and income from public use of assets</p>	<p>A charitable limited company or a charitable industrial provident society</p> <p>May hold assets it maintains through leases or freehold or may be charged with management and maintenance of assets vested in the Council.</p>	<p>Management and maintenance through a contract arrangement</p> <p>Possibly in partnership with private or other public sector providers</p> <p>Funding primarily through Council Tax.</p>

7.4 Communicating and promoting the benefits of green infrastructure and the role of the Strategy is important in terms of its delivery of the projects. It is also important to influence a wide range of partners, interest groups and the local community to support and get involved in delivering projects. The partners will prepare a Communications and Marketing Strategy for this purpose. It will include proposals for:

- promoting the Partnership
- raising awareness for the Strategy and projects
- dedicated web pages and interactive mapping tool
- recruiting green infrastructure ambassadors such as tree wardens.

Planning Policy and Other Strategies

7.5 The planning system provides a framework where components of green infrastructure can be conserved and enhanced. The new government has announced significant changes to the planning system through the Decentralisation and Localism Bill. The Bill devolves more powers to councils and neighbourhoods and gives local communities greater

control over local decisions. This will strengthen the opportunities for local communities to have a say and manage local green infrastructure assets.

- 7.6 This will take time to come into effect. Local authorities should continue to translate the Green Infrastructure Strategy into Local Development Frameworks by:
- making relevant references to green infrastructure;
 - identifying specific green infrastructure projects, land allocations and protected areas;
 - including policies to protect and enhance green infrastructure assets and considering section 106 developer contributions and the community infrastructure levy.
- 7.7 Bournemouth, Christchurch, Dorset, East Dorset, Poole and Purbeck councils are preparing the Joint Heathlands DPD to protect designated heathlands by managing the pressures of development.
- 7.8 Supplementary Planning Documents cover detailed issues. For example, the green infrastructure partnership will prepare a Green Infrastructure and Design Toolkit.
- 7.9 Other strategy documents also set out policy and action plans that rely on green infrastructure to contribute to meeting their objectives. The Local Transport Plan (LTP3) establishes a range of interventions which together aim to contribute to achieving five strategic goals of supporting the economy, reducing carbon emissions, better safety, security and health, equality of opportunity and improved quality of life.
- 7.10 The Dorset Rights of Way Improvement Plan aims to develop an efficient and effective Countryside Access Network. This will bring not only recreational and sporting benefits but also support many other policy objectives aligned to green infrastructure. The Rights of Way Improvement Plan identifies and prioritises actions and plans for the improved management and development of the Countryside Access Network.
- 7.11 The Strategic Plan for a Healthier Dorset 2010-2014 has a number of programme areas. Programme 1 'Staying Healthy' is about supporting people in leading healthy lives and reducing avoidable illness.

Green Infrastructure and Design Toolkit

- 7.12 This toolkit will provide practical guidance on how to include multi-functional green infrastructure when planning and designing new development. The toolkit will inform masterplanning and detailed design

processes as well as the development of green space management plans. It will include information on wildlife habitat creation, improvement and links; access routes; greening of transport corridors; open space and recreation; sustainable urban drainage; and community involvement.

Funding Opportunities

7.13 A wide range of funding opportunities will need to be pursued to ensure delivery of projects and their long term management. These fall into three main areas:

- consolidating and aligning existing public sector funding to recognise crossover of services and infrastructure;
- generating new public, private and third sector funding and management arrangements;
- securing private sector funding through the planning system where there are gaps in funding.

7.14 The work on standards will help to set priorities for strategic green spaces in terms of whether new provision is needed and where investment is required to bring existing green space assets up to an appropriate standard. Green space and green infrastructure will in many cases require an ongoing cost in terms of management and maintenance.

7.15 It is widely recognised that securing public sector funding for ongoing management and maintenance costs for green infrastructure schemes is difficult and unlikely to improve in the short term. It is important that long term funding for management and maintenance is established at the planning stage of a project to ensure the benefits are long term. New approaches will need to be found to fund this ongoing cost.

7.16 The following are potential sources of funding relevant to South East Dorset:

New and potential models
Tax Increment Financing
New Homes Bonus
Habitat/biodiversity banking
Carbon off setting
Energy Supply Company
Existing funding sources

Planning and development:

Planning conditions – require restoration, enhancement or creation of green spaces as part of planning consent for a specific development.

Planning obligations - section 106 agreements enable local authorities to secure financial contributions to fund capital or maintenance for green infrastructure. Changes to legislation will alter how section 106 can be used. The Councils in southeast Dorset currently secure financial contributions for transport infrastructure and heathland mitigation. Councils also secure contributions towards open space.

Community infrastructure levy (CIL) – came into effect in April 2010. CIL is a levy to fund new infrastructure that is needed as a result of development. Proposed reforms suggest that CIL can be used for ongoing costs relating to infrastructure.

Private management charges.

Public agencies:

EU funding: LIFE, LEADER, INTERREG IV

Land management and improvement funding from national public agencies such as:

- Natural England’s Environmental Entry or High Level Stewardship schemes
- Forestry Commission’s English Woodland Grant
- English Heritage – Historic buildings, monuments and designed landscapes grant scheme

Infrastructure funding from national public agencies eg. The Environment Agency’s investments programme in managing flood risks and coastal erosion.

Lottery funds

- Big lottery: eg Community Spaces, BIG Local Trust
- Heritage Lottery: eg Heritage Grants, Landscapes Partnerships programme, Parks for People programme

Local authority capital and revenue programmes

Local authority grant schemes e.g. for countryside and conservation projects

<p>General revenue budget of a local authority in relation to publicly-owned land, leisure services, highways, rights of way, countryside and regeneration are the most commonly tapped into for green spaces.</p> <p>The transfer of responsibilities for local health improvement from Primary Care Trusts to local authorities and combined with ring fencing of public health budgets creates an improved opportunity to integrate public health and green space programmes.</p> <p>Land management budgets of large institutional land owners</p> <p>Endowments</p>
<p>Tax related:</p> <p>Landfill tax</p>
<p>Third sector</p> <p>Third sector members funds eg: RSPB, Wildlife Trust, Woodland Trust, National Trust</p> <p>Charitable giving eg: Esmee Fairbairn Foundation biodiversity and food grants</p> <p>Local Charitable Trust</p>
<p>Private sector</p> <p>Local business / organisation sponsorship</p> <p>Market led schemes and income generation</p> <p>Business Improvement Districts (BIDs)</p>

7.17 Along with options for partnership arrangements, these opportunities will be fully explored in developing the key strategic projects.

Key Strategic Projects

7.18 A number of key strategic projects have been identified to strengthen the existing green infrastructure network. A range of smaller projects which are consistent to the principles of the Strategy will also contribute. The smaller projects are likely to fall under the remit of individual partners.

7.19 The key strategic projects will be developed by the partnership. The lead partners will need to work closely with local communities to ensure that

projects meet the needs of the local community and where appropriate include the local community in managing the projects.

7.20 The key strategic projects are:

- Lower Stour Valley Project
- Upton Country Park
- Castleman Trailway
- Cycleway Project
- Enjoying Water Project
- Greenway, Coast and Chine Project
- Moors Valley Extension
- Avon Heath Enhancement
- Local Food/Community Garden Initiative
- Local Open Space Project
- Woodland Restoration Project
- Heath Restoration Project
- Urban Street Trees
- Historic Environment Liaison Project

Lower Stour Valley Project

7.21 This project will develop a strategy for the river Stour and its floodplain from Sturminster Marshall to Christchurch. It would be an exemplar of sustainable land management and would be a flagship resource. Key aspects are to:

- provide accessible routes for walking / cycling and to interlink communities in a sustainable way;
- encourage access to / sustainable development of existing 'hubs' (recreational facilities, greenspace, visitor centres, etc);
- encourage multifunctional use by providing public footpaths, cycle routes, access to the river and opportunities for canoeing, flood attenuation and biodiversity / landscape enhancements.

Upton Country Park

7.22 This project will provide new greenspace with outdoor recreation facilities to serve residents across South East Dorset. It will complement the existing network of Country Parks, such as Moors Valley and Avon Heath and links well to the conurbation via the Castleman Trailway. The Upton Country Park project would deliver:

- approximately 60 ha of newly accessible greenspace;
- Suitable Alternative Natural Greenspace to alleviate recreational pressure from lowland heaths;
- new outdoor recreation facilities such as cycling routes;
- improved tourism experience;
- habitat creation adjacent to the Poole Harbour SPA, designed for wildlife and people.

Castleman Trailway

7.23 This project will develop the quality and usage of this key strategic access route, which runs from Upton Country Park northwards to Wimborne and connecting on towards Avon Heath Country Park and the New Forest National Park.

7.24 The Castleman Trailway is a key access route that benefits Purbeck, Poole and East Dorset. The basic route exists but with some improvement to signage, promotion, community engagement and habitat enhancement the route could be far better used and provide a key greenway linking parts of the conurbation to the surrounding area and providing good accessible circular routes, for walkers, cyclists and horse-riders alike.

Cycleway Project

7.25 Cycling has the potential to offer a low cost, low carbon, healthy and fun way of accessing urban and rural green space within SED and using green infrastructure to reach centres of employment, education, retail and leisure. Improving cycle routes and the permeability of the highways, parks and green spaces of SED to cycling is therefore key in delivering the Active Travel Network and a core part of the Urban Greening Zone theme.

7.26 This project will identify and prioritise for upgrade/implementation existing and new cycle routes between major employment centres, residential areas and green open space. These will focus on using green infrastructure corridors, primarily within the urban area to provide linkage to:

- the north and south of South East Dorset;

- major employment sites at Ferndown and Bournemouth Airport;
- areas of green space deprivation;
- other strategic GI cycle networks e.g. the Castleman Trailway and Stour Valley;
- Wareham and Upton.

7.27 The project will determine the type of infrastructure upgrades required, provide estimated costs, develop a prioritised implementation programme and identify funding sources and partners.

Enjoying Water Project

7.28 An 'Enjoying Water Strategy' has been recently developed by the Environment Agency in partnership with other organisations. The strategy aims to maximise the economic, environmental and social benefits of water-based recreation in the South West for the period 2009-2014. It seeks to maximise the potential of inland and coastal waters, encouraging sustainable and responsible opportunities for everyone. It identifies coast and water-based sport and recreation activities which can excel in the South West. The potential of water bodies needs to be recognised and valued; the concept of 'Blue space' can help to improve habitat for wildlife, provide areas for recreation such as canoeing and improve people's quality of life in urban and rural areas. A full copy of the strategy can be downloaded from: www.brighton.ac.uk/waterrecreation

Greenway, Coast and Chine Project

7.29 Between Poole Bay from Sandbanks to Hengistbury Head and to Chewton Bunny in Christchurch there is an outstanding opportunity to provide a multi-functional link both east and west and northwards into the urban area. The coast is the main attraction for a distance up to 15km. East to west there is an excellent existing coastal link between Poole and Bournemouth. Existing open spaces and the Chines provide the potential for access links penetrating the urban areas north of the coast. Encouraging better use of facilities by local people and tourists alike will have a number of benefits:

- reducing congestion by encouraging more sustainable access to the coast;
- supporting the coastal focussed tourism industry by linking to facilities not directly located on the coast;
- providing coastal access hubs deep into the urban area signing links to the Chines;

- increasing the use of natural greenlinks for safe recreational and commuter cycling;
- enhancing biodiversity on the Chines by making their landscape more open and safe through removal of tree and dense shrubs.

Moors Valley Extension

7.30 An extension to Moors Valley has the potential to link areas together to make a north-south recreational area with Moors Valley as a regional recreational hub. There is also potential to link Moors Valley to Avon Heath Country Park, together with the Forestry Commission land around West Moors and Hurn Forest and then onto St Catherine's Hill. Linking the area more closely to the Castleman Trailway would give good access to the New Forest in the east and to Ferndown and Poole in the west. It may also provide an off-road route from Bournemouth Airport, Throop and St Catherine's Hill to link with the Trailway.

7.31 The Moors River SSSI runs through the area and there may be benefits in a large part of the river system being managed as one unit. The Environment Agency has a project of river restoration on the Moors River SSSI.

Avon Heath Enhancement

7.32 This project will enhance Avon Heath Country Park by creating a strategic hub for an area of high conservation value and mitigating the effects of an increasing requirement for recreation. It will link Avon Heath Country Park with Moors Valley Country Park, the New Forest, Bournemouth and Christchurch. The project aim is to provide high quality green infrastructure that mitigates pressures on the more sensitive areas of the site. This will be achieved by improving the educational aspects at the park and creating a unique interactive educational / recreational facility around the Heathland Discovery Centre.

Local Food/Community Garden Initiative

7.33 This project promotes, encourages and supports a range of co-ordinated community gardens across South East Dorset. The main aims reflect the multi-functionality of green infrastructure and include:

- promoting sustainable urban gardening;
- supporting local food growing for local use;
- conserving and enhancing local areas of green space for wildlife, amenity and wellbeing ;
- promoting the sustainable use and value of public and private land;

- promoting social inclusion through horticulture and land management;
- promoting healthy outdoor exercise and healthy eating;
- also consider: small scale renewable energy, demonstration projects e.g. for visiting school groups, preparing local food onsite, 'free tree' scheme.

Local Open Space Project

7.34 Smaller parks and open spaces are vital to quality of life and can help to build healthy communities. They might provide equipped play areas, casual play or amenity space, meeting areas or merely offer a refuge from busy urban streets. Such spaces can attract users from a wide area and for a multitude of purposes and, with opportunities for new open spaces at a premium, most local authorities will be keen to enhance their role or capacity. Individually, such open spaces would normally be a matter for local recreation strategies rather than a sub-regional green infrastructure strategy. However, in developing their recreation strategies, it will be important for local authorities to consider the role that local space can play in supporting wider green infrastructure priorities. In particular, local open space:

- can provide 'stepping stones' or links between larger linear features, strategically important parks, or wildlife corridors;
- can be managed in a way that supports broader recreational objectives, for example by addressing local needs and thus reducing demands on other under-pressure facilities;
- can help to deliver local health or community agendas by promoting physical activity and social interaction;
- may be capable of forming part of a larger strategic project within the Urban Greening Zone which can address a variety of cross-cutting priorities.

Woodland Restoration Project

7.35 This project will focus on the support through planning policy for the retention and enhancement of existing areas of unimproved grassland and Ancient Woodland across the area. It will provide direction for the planning authorities about the restoration of planted ancient woodland and protection of individual and stands of trees through Tree Preservation Orders. Key objectives will include supporting the priorities of the South West Nature Map and the delivery of projects developed by the Cranborne Chase and West Wiltshire Downs AONB and Wild Purbeck.

Heath Restoration Project

7.36 Conservation and enhancement of the internationally important lowland heathlands in South East Dorset is a key priority. This project will focus on the opportunities for heathland expansion and in securing land adjacent to heathlands which will allow the species and habitats to be more robust against urban related pressures and predicted changes in climate.

Urban Street Trees Project

7.37 The key elements of this project are to promote and carry out an audit of existing trees, to implement a major planting programme of native species street trees and to develop sustainable mechanisms to secure their long term management.

7.38 As a key part of the Urban Greening Zone, trees in towns play a vital role in the urban areas of South East Dorset by:

- helping to mitigate carbon dioxide emissions by absorbing and storing it via photosynthesis and by releasing oxygen;
- providing amenity, wildlife and aesthetic benefits and therefore promoting general health and well being;
- helping to reduce the urban 'heat island' effect through evaporative cooling and shading.

7.39 Many existing trees in the area are over mature or in poor condition. This initiative provides new opportunities for additional tree planting but also a means to help ensure the long term management of existing stock. Areas in most need will be targeted first for new tree planting, which will focus primarily on native trees, and consider a variety of areas to plant from highway land and open space to private gardens and open space. Working in partnership, with highway and planning authorities and the statutory undertakers, the project will consider setting up a charity or trust to run the initiative based on the 'Trees for Cities' charity (see <http://www.treesforcities.org/index.php>). Street tree planting opportunities along major highways routes will be a key target and working with the Local Transport Planning team will therefore be essential.

Historic Environment Liaison Project

7.40 This project will build on the parish Historic Environment Liaison Officer scheme to increase the coverage of this volunteer based scheme. The main aims are to develop community recording and celebratory events to encourage greater participation and active enjoyment of the historic environment. The use of local contacts and recording exercises will help to identify under-used areas of the historic environment for recreation. In particular, it will identify those areas and monuments accessible (either physically or visually) from rights of way.

Developing an Action Plan

- 7.41 A broad action plan has been developed which summarises the actions needed to deliver the Strategy. Clearly, any action must take account of existing policies and designations relating to an asset. At this stage the Strategy reflects current commitments and forms the starting point for more detailed work.
- 7.42 A more detailed action plan to guide the work of the partnership will be developed when the Strategy is finalised. The summary Action Plan is set out below.

Summary Action Plan for the South East Dorset Green Infrastructure Strategy

Project	Theme	Relevant Standard	Cost Estimate	Mechanism (e.g. LDF; Heathland IPF)	Committed Funding	Milestones / Stages
General						
Investigate delivery and management vehicle options	All			SED GI Group		Consider delivery and management vehicle options Agree approach Implement approach
Communications & Marketing Strategy	All			SED GI Group		Develop a communications and marketing strategy
Research economic data for South East Dorset	All					Undertake research on the specific economic benefits of GI for SED
GI data mapping – Dorset explorer	All			SED GI Group		Complete GI version of Dorset Explorer
GI interactive	All			SED GI Group		Investigate options for an

Project	Theme	Relevant Standard	Cost Estimate	Mechanism (e.g. LDF; Heathland IPF)	Committed Funding	Milestones / Stages
mapping tool						interactive GI mapping tool
GI & Design Toolkit	Enhancing the Urban Environment					Scope role and function of toolkit Develop and consult Adopt
Data collection – funding sources, existing projects	All			SED GI Group		Undertake data collection on existing projects and funding sources
Key Strategic						
Lower Stour Valley Project	Water & Flood Management		Unknown	Heathlands DPD Developer contributions	None secured	Develop a strategy
Upton Country Park	Green Space Creation & Enhancement	Strategic Green Space	£500,000	Heathlands DPD Developer contributions Income generation	£170,000 Heathland Mitigation Fund	Land acquisition Open new green space Establish new recreation activities

Project	Theme	Relevant Standard	Cost Estimate	Mechanism (e.g. LDF; Heathland IPF)	Committed Funding	Milestones / Stages
Castleman Trailway	Active Travel Routes	Cycle Route Design	£250,000	Heathlands DPD	£65,000 Heathland Mitigation Fund £45,000 East Dorset developer contributions Dorset County Council	Improve route infrastructure Improvements for wildlife
Cycleway Project	Active Travel Routes	Cycle Route Design	£50,000	Local Transport Plan 3 LDF proposals Developer contributions Planning conditions Potential Sustrans funding	None secured	Identify opportunities and priority routes Identify and secure funding Design and deliver routes
Enjoying Water Project						

Project	Theme	Relevant Standard	Cost Estimate	Mechanism (e.g. LDF; Heathland IPF)	Committed Funding	Milestones / Stages
Greenway, Coast & Chine Project	Coast – A Year Round Destination			Bournemouth Core Strategy Coastal Enhancement Zone Developer contributions	Staff time	Scope role, function and geographical coverage of project Develop approach
Moors Valley extension	Green Space Creation & Enhancement	Strategic Green Space			None secured	Agree extension design Identify and secure funding Implement design
Avon Heath enhancement	Green Space Creation & Enhancement	Strategic Green Space	£250,000		£125,000	Develop pre-school outdoor education Develop interactive play Improve infrastructure around Heathland Discovery Centre
Local Food & Community Garden	Greening the Urban		£70,000	Obtain grants from Lottery	None secured	Identify opportunities

Project	Theme	Relevant Standard	Cost Estimate	Mechanism (e.g. LDF; Heathland IPF)	Committed Funding	Milestones / Stages
Initiative	Environment			and partner organisations		Set up community gardens and allotments
Local Open Space Project	Green Space Creation & Enhancement	Local Open Space		Co-ordinate investment opportunities – leisure, schools, developer contributions, NHS, LTP3	Developer contributions	Local authorities to consider how local open space can contribute to the objectives of the GI strategy
Woodland Restoration Project	Habitat Restoration	Forestry Standard Ancient Trees		Continue existing initiatives: Veteran Trees, Beneath the Trees, Wild Purbeck etc	None secured	Bring together information on ancient woodlands, planted ancient woodlands, veteran trees and heritage areas
Heath Restoration Project	Habitat Restoration	Nature conservation SANGS		Dorset Urban Heaths Partnership Dorset Grazing Partnership Heathland DPD Access to	Some funding secured	Increase areas of suitable land secured for heathland expansion and support

Project	Theme	Relevant Standard	Cost Estimate	Mechanism (e.g. LDF; Heathland IPF) Nature?	Committed Funding	Milestones / Stages
Street Trees	Greening the Urban Environment	TCPA Street trees	£200,000 - £300,000	Obtain grants from Lottery	None secured	Condition survey and audit of street and highway trees Feasibility study for funding, delivery, management and programming of street trees Implement
Historic Environment Liaison Project	Celebrating Heritage			Volunteer based	None secured	Establish volunteer recording scheme for woodlands, heathlands, river valleys and inter-tidal zone

Monitoring and Review

7.43 The Strategy will be kept under review by monitoring key indicators, assessing progress of the key strategic projects and developing and reviewing an action plan on an annual basis.

7.44 The following key indicators are identified:

- Blue Flag beaches
- cycle route design
- habitats in favourable condition
- water quality – good ecological status
- Green Flag parks
- quantity, accessibility and quality of strategic green spaces

7.45 The key strategic projects will also have specific monitoring requirements.

8 APPENDICES

Appendix 1: Strategic Green Space Sites

Site Name	Typology	Area (Ha)	Distance (km)	Bournemouth	Christchurch	East Dorset	Poole	Purbeck	Outside SED	Designation	Suggested Grading
Arne	Natural and Semi Natural Green Space	216.0						ü		Ramsar, SAC, SPA, SSSI	3
Avon Heath Country Park (N)	Natural and Semi Natural Green Space	127.0				ü				SAC, SPA, SSSI	3
Avon Heath Country Park (S)	Natural and Semi Natural Green Space	96.4				ü				SAC, SPA, SSSI	3
Avon Valley Footpath (Salisbury to Christchurch Priory)	Transport Corridor		54.0		ü				ü	Ramsar, SAC, SPA, SSSI	3
Badbury Rings	Natural and Semi Natural Green Space	111.4				ü				SNCI, RIG, SAM, HP&G	2
Bourne Valley Park	Natural and Semi Natural Green Space	75.8		ü			ü			RAMSAR, SAC, SPA, SSSI, LNR	3??
Bournemouth Central Gardens	Parks and Gardens	5.2		ü						HP&G	1
Bournemouth Lower Gardens	Parks and Gardens	4.9		ü						HP&G	1
Bournemouth Upper Gardens	Parks and Gardens	4.5		ü						HP&G	1
Branksome Dene Chine	Natural and Semi Natural Green Space	7.0					ü			part SSSI, part SNCI, LNR	2
Branksome	Natural and Semi Natural	25.0					ü			N/A	2

Site Name	Typology	Area (Ha)	Distance (km)	Bournemouth	Christchurch	East Dorset	Poole	Purbeck	Outside SED	Designation	Suggested Grading
Park & Woods	Green Space - Woodland										
Broadstone Recreation Ground	Amenity Green space	22.0					ü			SNCI, LNR	2
Brownsea Island	Natural and Semi Natural Green Space	206.9						ü		Ramsar, SAC, SPA, SSSI, some RIGs	3
Canford Cliffs, Chine & Gardens	Natural and Semi Natural Green Space	4.6					ü			Luscombe Valley SSSI	2
Canford Heath LNR	Natural and Semi Natural Green Space	349.0					ü			Ramsar, SAC, SPA, SSSI, LNR (pending)	3
Cannon Hill Plantation	Natural and Semi Natural Green Space	94.4				ü				N/A	1
Castleman Trailway	Transport Corridor		26.5			ü	ü			N/A	1
Chewton Bunny	Natural and Semi Natural Green Space	7.2			ü					SSSI, SNCI	2
Chewton Common	Amenity Green space (in private ownership, with limited public rights of way)	32.4			ü					SNCI	2
Christchurch Beaches	Beach		3.7		ü					SSSI	2
Christchurch Harbour	Amenity Green space			ü	ü	□				SSSI	2
Christchurch Priory & Gardens	Parks and Gardens	0.6			ü					SSSI, Conservation Area	2
Christchurch	Amenity Green Space	2.2			ü					SSSI, Conservation Area	2

Site Name	Typology	Area (Ha)	Distance (km)	Bournemouth	Christchurch	East Dorset	Poole	Purbeck	Outside SED	Designation	Suggested Grading
Quay/The Quomps											
Corfe Common & Corfe Castle	Natural and Semi Natural Green Space	192.4						ü		Ramsar, SAC, SSSI	3
Delph Woods	Natural and Semi Natural Green Space	32.1					ü			SNCI, LNR (pending)	2
Durlston Country Park	Natural and Semi Natural Green Space	111.7						ü		SAC, SSSI. HP&G	2
Ferndown Forest/Uddens	Natural and Semi Natural Green Space	122.4				ü				N/A	1
Hamworthy Park	Parks and Gardens	11.0					ü			SSSI	2
Hartland Moor & Stoborough Heath NNR	Natural and Semi Natural Green Space	691.2						ü		Ramsar, SAC, SPA, NNR, SSSI, SNCI	3
Hengistbury Head	Natural and Semi Natural Green Space	120.5		ü	ü	□				LNR, SAM, SSSI	2
Hicks Farm				ü							
Highcliffe Castle	Amenity Green Space	12.0			ü					Listed buildings	2
Holes Bay Cycleway (Poole Heritage Cycle Route?)	Transport Corridor		12.0				ü			N/A	2
Holt Heath Nature Reserve	Natural and Semi Natural Green Space	404.0				ü				Ramsar, SAC, SPA, NNR, SSSI	3
Hurn Forest	Natural and Semi Natural Green Space	376.5			ü	ü				SSSI, SNCI	2
Kingston Lacy House & Park	Parks and Gardens	110.8				ü				SNCI, HP&G, Conservation Area	2

Site Name	Typology	Area (Ha)	Distance (km)	Bournemouth	Christchurch	East Dorset	Poole	Purbeck	Outside SED	Designation	Suggested Grading
Meyrick Park (inc golf course)	Parks and Gardens	61.6		ü						SNCI	1
Moors Valley Country Park	Natural and Semi Natural Green Space	101.0				ü				N/A	1
Mudford Quay & Sandspit	Natural and Semi Natural Green Space	4.9			ü					SSSI, SNCI	2
Muscliffe Nature Reserve	Natural and Semi Natural Green Space	0.8		ü						LNR	2
Poole Harbourside Park (Baiter & Whitecliff)	Parks and Gardens	30.0					ü			SSSI	2
Poole Park	Parks and Gardens	41.0					ü			N/A	1
Purbeck Ridge - not a specific route but several paths	Transport Corridor							ü		SNCI	2
Queens Park (inc golf course)	Parks and Gardens	62.1		ü						SNCI	2
Ringwood Forest (Inc part MVCP- need to take out)	Natural and Semi Natural Green Space	773.4				ü		ü		Part SPA, Part SSSI, Part SNCI	2
Sandbank to Hengistbury Head Beach	Beach		17.0	ü			ü			Part SSSI, Part SNCI	2
St. Catherines Hill (& Town Common?)	Natural and Semi Natural Green Space	141.4			ü					SAC, SPA, SSSI	3

Site Name	Typology	Area (Ha)	Distance (km)	Bournemouth	Christchurch	East Dorset	Poole	Purbeck	Outside SED	Designation	Suggested Grading
Stanpit Marsh	Natural and Semi Natural Green Space	56.0		ü	ü					SSSI, SNCI	2
Stour Valley Way	Transport Corridor		102.0	ü	ü	ü			ü	An SSSI forms part of route, hence suggested Grading 2. There may be potential for parts of the route to be Grade 1.	2
Studland Heath (& beach)	Natural and Semi Natural Green Space	749.0	6.0					ü		Ramsar, SAC, SPA, SSSI, Part SNCI	3
Swanage Sea Front & beach	Coast		2.5					ü		N/A	1
The Mude Valley Nature Reserve	Natural and Semi Natural Green Space	17.5			ü					SNCI	2
Throop Mill				ü							
Turlin Moor LNR	Natural and Semi Natural Green Space	27.0					ü			Part RAMSAR, Part SPA, part SSSI, LNR	3
Upton Country Park	Parks and Gardens	37.0					ü			LNR (pending)	1
Upton Heath	Natural and Semi Natural Green Space	237.7				ü	ü	ü		Ramsar, SAC, SPA, SSSI	3
Wareham Forest	Natural and Semi Natural Green Space	1499.0						ü		Ramsar, SAC, SPA, SSSI, SNCI	3
West Moors Plantation	Natural and Semi Natural Green Space	105.8				ü				Part SSSI, SNCI	2
Wild Purbeck ??								ü			2

Appendix 2: Key Strategic Project Details



Appendix 2 : Key Strategic Project Details

Contents

1. Lower Stour Valley Project
2. Upton Country Park
3. Castleman Trailway
4. Cycleway Project
5. 'Enjoy Water' Project
6. Greenway, Coast and Chine Project
7. Moors Valley extension
8. Avon Heath (Ringwood Forest) Enhancement
9. Local Food & Community Garden Initiative
10. Local Open Space Project
11. Woodland Restoration Project
12. Heath Restoration Project
13. Urban Street Trees
14. Historic Environment Liaison Project

001 LOWER STOUR VALLEY

Project Ref:		Project Name:	
001		Lower Stour Valley	
Project Description:			
<p>This project is the development of a strategy for the river Stour and its floodplain from Sturminster Marshall to Christchurch. It would be an exemplar of sustainable land management and would be a flagship resource. Key aspects are:</p> <ul style="list-style-type: none"> • Provision of an accessible route for walking / cycling and to interlink communities in a sustainable way. • Encourage access to / sustainable development of existing 'hubs' (recreational facilities, greenspace, visitor centres, etc). • To encourage multifunctionality of use via provision of public footpaths, cycle routes, access to river, flood attenuation and biodiversity / landscape enhancements. 			
Relevant Strategic Objectives:		Relevant Framework Opportunity:	
To work in partnership to deliver multi-functional green infrastructure	√	The Coast and Harbours	
To improve health and well-being, reduce inequality & encourage community participation	√	Active Travel Network	√
To strengthen the competitive advantages of South East Dorset's economy	√	River Valleys	√
To prepare for climate change through mitigation & adaptation	√	Urban Greening Zone	√
To conserve and enhance the unique natural environment & to maximise the positive contribution of economic and housing growth	√	Habitat Restoration Zones	√
To create and manage sustainable places informed by local people & local character	√	Coast – A Year Round Destination	
		Active Travel Routes	√
		Water & Flood Management	√
		Greening the Urban Environment	√
		Green Space Creation & Enhancement	√
		Habitat Creation & Restoration	√
		Celebrating Heritage	
Other Relevant Policy / Programmes / Initiatives:			
Catchment Flood Management Plans, Local Transport Plans, Biodiversity Plans, Dorset, Bournemouth and Poole Multi Area Agreement, Local Authority Partnerships.			
Planning Status:		Land Ownership:	
		Multi ownership	
Proposed Lead Agency:		Suggested Partner Organisations:	
Natural England, East Dorset DC, Christchurch BC & Environment Agency.		National Trust, Forestry Commission, Land owners, Sustrans, PCT/NHS, Dorset Wildlife Trust, Bournemouth & Poole College, Bournemouth & West Hants Water, Dorset County Council.	
Indicative Cost:		Funding Opportunities:	
Unknown at this stage. The purpose of the project is to identify a strategy.		Funding Secured:	None secured to date.
Project Priority:		Other Secured Resources:	

High	Other Opportunities:	Heathland DPD. Developer contribs. LTP3. Community Interest Company. EU Life Bid? Lottery Funding? Environmental Stewardships. Sustrans. Groundworks. Landscape Partnership.
Long term Management and Maintenance Arrangements:		
Working in partnership between public / private / voluntary sector.		
Key Actions:		
<ul style="list-style-type: none"> • To open up new greenspace for public access, including clear well signed access routes. • To connect existing communities and 'hubs'. 		
Outcome(s):		
<ul style="list-style-type: none"> • Improved infrastructure. • Increased levels of recreation. • Improved levels of health. • Increased biodiversity and landscape amenity. • Provision of flood attenuation. 		
Indicator(s):		
<ul style="list-style-type: none"> • Level of use (locals and visitors). • Levels of satisfaction. 		

002 UPTON COUNTRY PARK

Project Ref:		Project Name:	
002		Upton Country Park	
Project Description:			
<p>This project will provide new greenspace with outdoor recreation facilities to serve residents across South East Dorset. It will compliment the existing network of Country Parks, such as Moors Valley and Avon Heath and links well to the conurbation via the Castleman Trailway. The Upton Country Park project would deliver:</p> <ul style="list-style-type: none"> • Approximately 60 ha of newly accessible greenspace • Suitable Alternative Natural Greenspace to alleviate recreational pressure from lowland heaths • New outdoor recreation facilities such as cycling routes • Improved tourism experience • Habitat creation adjacent to the Poole Harbour SPA, designed for wildlife and people <p>As this land is already in council ownership its development as new greenspace would offer good value for money and the land and buildings also present income generation potential to secure the land's future maintenance</p>			
Relevant Strategic Objectives:		Relevant Framework Opportunity:	
To work in partnership to deliver multi-functional green infrastructure		The Coast and Harbours	
To improve health and well-being, reduce inequality & encourage community participation		Active Travel Network	√
To strengthen the competitive advantages of South East Dorset's economy		River Valleys	
To prepare for climate change through mitigation & adaptation		Urban Greening Zone	√
To conserve and enhance the unique natural environment & to maximise the positive contribution of economic and housing growth		Habitat Restoration Zones	√
To create and manage sustainable places informed by local people & local character		Coast – A Year Round Destination	
		Active Travel Routes	√
		Water & Flood Management	√
		Greening the Urban Environment	√
		Green Space Creation & Enhancement	√
		Habitat Creation & Restoration	√
		Celebrating Heritage	√
Other Relevant Policy / Programmes / Initiatives:			
Heathland Mitigation DPD, Dorset, Purbeck and Poole Community Strategies, Development Plan Documents.			
Planning Status:		Land Ownership:	
Included in adopted Core Strategy as a Suitable Alternative Natural Greenspace (SANG) Included in the emerging Site Specific Allocations Document		Borough of Poole owned land, part of which falls within Purbeck	
Proposed Lead Agency:		Suggested Partner Organisations:	
Borough of Poole		Dorset Urban Heaths Grazing Partnership Other local authorities – potential to run complimentary and linking activities such as cycle hire linking Avon Heath Country Park and Moors Valley Country Park	
Indicative Cost:		Funding Opportunities:	

Phase 1 - £500,000 Income generating opportunities to help provide revenue for future maintenance	Funding Secured:	£170k allocated from Heathland Mitigation Fund
Project Priority:	Other Secured Resources:	
	Other Opportunities:	Developer contributions from Hamworthy regeneration Investment from other groups and companies being explored
Long term Management and Maintenance Arrangements:		
There are a number of possible delivery options that are currently being explored:		
<ul style="list-style-type: none"> • Direct local authority management • Working in partnership with private &/ or voluntary sector 		
Key Actions:		
<ul style="list-style-type: none"> • To open up new greenspace for public access • To establish new recreational activities at the Country Park that compliment the network of Country Parks and key greenspaces in South East Dorset 		
Outcome(s):		
<ul style="list-style-type: none"> • Increased levels of participation in recreation • Improved habitat quality and biodiversity at a key greenspace adjacent to Poole Harbour • Establishment of Country Park of sub regional importance that compliments other Country Parks and can accommodate high levels of use and activity 		
Indicator(s):		
<ul style="list-style-type: none"> • Number of visitors • Visitor satisfaction • Increased income generated • Number of cyclists on key cycling routes from the town to Upton Country Park along Holes Bay 		

003 CASTLEMAN TRAILWAY

Project Ref:		Project Name:	
003		Castleman Trailway	
Project Description:			
This project will develop the quality and usage of this key strategic access route, which runs from Upton Country Park northwards to Wimborne and connecting on towards Avon Heath Country Park and the New Forest National Park.			
The Castleman Trailway could be a key access route that benefits Purbeck, Poole and East Dorset. The basic route exists but with some improvement to signage, promotion, community engagement and habitat enhancement the route could be far better used and provide a key greenway linking parts of the conurbation to the surrounding area and providing good accessible circular routes.			
Relevant Strategic Objectives:		Relevant Framework Opportunity:	
To work in partnership to deliver multi-functional green infrastructure	√	The Coast and Harbours	
To improve health and well-being, reduce inequality & encourage community participation	√	Active Travel Network	√
To strengthen the competitive advantages of South East Dorset's economy	√	River Valleys	
To prepare for climate change through mitigation & adaptation	√	Urban Greening Zone	√
To conserve and enhance the unique natural environment & to maximise the positive contribution of economic and housing growth	√	Habitat Restoration Zones	√
To create and manage sustainable places informed by local people & local character	√	Coast – A Year Round Destination	
		Active Travel Routes	√
		Water & Flood Management	
		Greening the Urban Environment	√
		Green Space Creation & Enhancement	√
		Habitat Creation & Restoration	√
		Celebrating Heritage	√
Other Relevant Policy / Programmes / Initiatives:			
Sustainable Community Strategies, Local Transport Plan, Local Authorities' Core Strategies and Corporate Plans (Poole, Purbeck and East Dorset), Heathland Mitigation DPD.			
Planning Status:		Land Ownership:	
		Predominantly Borough of Poole, Dorset County Council and Forestry Commission owned land	
Proposed Lead Agency:		Suggested Partner Organisations:	
Dorset County Council		Borough of Poole, East Dorset District Council, Natural England, Sustrans, Urban Heaths Partnership	
Indicative Cost:		Funding Opportunities:	
£250,000		Funding Secured:	Heathland Mitigation Fund £65k
Project Priority:		Other Secured Resources:	East Dorset Developer Contribution £45k Dorset County Council
High		Other Opportunities:	Canford Trust
Long term Management and Maintenance Arrangements:			

Management and maintenance undertaken by relevant land owning local authority in co-ordination with each other to secure economies of scale where possible.

Key Actions:

- Improved infrastructure
- Undertake practical conservation work

Outcome(s):

- Improvements to key strategic route
- Creation of links between strategic routes, communities and primary destination sites
- Improvements for wildlife along routes and links
- Increased knowledge of natural world will encourage responsible behaviour in all habitats including the heaths
- Provision of leaflets, information in electronic formats, interpretation and events and activities will encourage people to visit sites other than heaths

Indicator(s):

- Increased usage of trail
- Visitor satisfaction

004 CYCLEWAYS PROJECT

Project Ref:		Project Name:	
004		Cycleways Project	
Project Description:			
<p>This project will identify and prioritise for upgrade/implementation existing and new cycle routes between major employment centres, residential areas and green open space. These will focus on using green infrastructure corridors, primarily within the urban area to provide linkage to:</p> <ul style="list-style-type: none"> the north and south of South East Dorset major employment sites at Ferndown and Bournemouth Airport areas of green space deprivation other strategic GI cycle networks e.g. the Castleman Trailway and Stour Valley Wareham and Upton <p>The project will:</p> <ol style="list-style-type: none"> Build upon initial consultation and engagement with local people to identify aspirations for such GI cycle routes; Determine the location, routing and type of infrastructure upgrades required; Provide outline designs sufficient for initial public consultation; Provide estimated costs and a prioritised implementation programme; and Identify funding sources and partners. <p>The project will need to take care to ensure that the location or level of activity avoids sensitive locations which could harm the integrity of Natura 2000 and Ramsar sites.</p> <p>It is important to understand that at this stage the project is a planning, not delivery project.</p>			
Relevant Strategic Objectives:		Relevant Framework Opportunity:	
To work in partnership to deliver multi-functional green infrastructure	√	The Coast and Harbours	
To improve health and well-being, reduce inequality & encourage community participation	√	Active Travel Network	√
To strengthen the competitive advantages of South East Dorset's economy	√	River Valleys	
To prepare for climate change through mitigation & adaptation	√	Urban Greening Zone	√
To conserve and enhance the unique natural environment & to maximise the positive contribution of economic and housing growth	√	Habitat Restoration Zones	
To create and manage sustainable places informed by local people & local character		Coast – A Year Round Destination	
		Active Travel Routes	√
		Water & Flood Management	
		Greening the Urban Environment	√
		Green Space Creation & Enhancement	
		Habitat Creation & Restoration	
		Celebrating Heritage	
Other Relevant Policy / Programmes / Initiatives:			
This project will also help to deliver the following policies and initiatives: Local Transport Plan (LTP3), Local Development Framework (LDF), MAA Green Knowledge Economy.			
Planning Status:		Land Ownership:	
The majority of works would most likely be delivered through the LTP3, LDF, Parks improvement schemes and developer led as a result of s106 / planning consent requirements. Some elements of infrastructure, for example any planned bridges, may require planning consent. This would be established by the project.		Whilst public highways, parks and open spaces are likely to form the bulk of the new cycle routes, some of the potential routes may require negotiation or even purchase of land from private or other public landowners	

Proposed Lead Agency:		Suggested Partner Organisations:	
Borough of Poole, Bournemouth Borough Council and Dorset County Council through the LTP3		Sustrans, District Councils, Major Developers and Landowners, Crown Estate	
Indicative Cost:		Funding Opportunities:	
£50,000 to cover desk based planning using GIS, land ownership searches, physical route surveys, preparation outline design including planting / GI issues, preparation of estimated Bill of Quantities and consultation		Funding Secured:	None at this stage
Project Priority:		Other Secured Resources:	None at this stage
High		Other Opportunities:	LTP3 / Sustrans may be able to provide funding towards the project
Long term Management and Maintenance Arrangements:			
Where the routes form part of the public adopted Highway Network they will become the responsibility of the Highway Authority to manage and maintain. Where routes follow Rights of Way it will be the responsibility of the landowner, supported by the relevant Local Authority's Countryside Access team.			
Key Actions:			
<ul style="list-style-type: none"> • Set-up a steering group across the 3 Local Authorities and relevant partners to develop a project plan and secure the necessary financial and staff resource to undertake the project • Undertake a desk based study to identify opportunities for new cycle routes and begin priority assessment based on coherence, directness, safety, comfort and attractiveness of the proposed route corridors and value for money • Develop a prioritised hierarchy of cycle routes for implementation based on ability to increase cycle trips and access to key destinations (including GI and green open space) • Undertake site based conceptual design to determine the route feasibility, select the appropriate infrastructure solution, prepare outline designs and determine estimated costs • Identify potential sources of funding for implementing the proposals and secure funding for route delivery. 			
Outcome(s):			
<ul style="list-style-type: none"> • Increased levels of cycling trips • Increased satisfaction with the provision of cycle facilities in SED 			
Indicator(s):			
<ul style="list-style-type: none"> • Level of cycling trips as measured by LTP3 • Satisfaction with cycle facilities as measured by the National Highways User Satisfaction Survey 			

005 ENJOYING WATER

Project Ref:		Project Name:	
005		Enjoying Water	
Project Description:			
This project is complimentary to the Environment Agency's 'Enjoying Water' partnership strategy. The aim is to stimulate the economic, environmental and social aspects of water-based recreation by maximising the potential of inland and coastal waters. The project will need to take care to ensure that the location or level of activity avoids sensitive locations which could harm the integrity of Natura 2000 and Ramsar sites.			
Relevant Strategic Objectives:		Relevant Framework Opportunity:	
To work in partnership to deliver multi-functional green infrastructure		The Coast and Harbours	√
To improve health and well-being, reduce inequality & encourage community participation	√	Active Travel Network	
To strengthen the competitive advantages of South East Dorset's economy	√	River Valleys	√
To prepare for climate change through mitigation & adaptation		Urban Greening Zone	
To conserve and enhance the unique natural environment & to maximise the positive contribution of economic and housing growth		Habitat Restoration Zones	
To create and manage sustainable places informed by local people & local character		Coast – A Year Round Destination	
		Active Travel Routes	√
		Water & Flood Management	
		Greening the Urban Environment	√
		Green Space Creation & Enhancement	
		Habitat Creation & Restoration	
		Celebrating Heritage	
Other Relevant Policy / Programmes / Initiatives:			
Dorset, Bournemouth and Poole Multi-Area Agreement?, Dorset Community Strategy?, Poole Community Strategy?			
Planning Status:		Land Ownership:	
		Multi ownership.	
Proposed Lead Agency:		Suggested Partner Organisations:	
Environment Agency		Natural England, Sport England, Dorset CC, Borough of Poole, Bournemouth BC and South East Dorset Local Authorities.	
Indicative Cost:		Funding Opportunities:	
Unknown		Funding Secured:	No
Project Priority:		Other Secured Resources:	
Medium?		Other Opportunities:	
Long term Management and Maintenance Arrangements:			
Key Actions:			
<ul style="list-style-type: none"> Development of strategies and joint working which promote sensitive water-based recreation 			
Outcome(s):			
<ul style="list-style-type: none"> Existing access to the water (including slipways and footpaths) are protected and enhanced and new opportunities provided 			
Indicator(s):			
<ul style="list-style-type: none"> Retention of access to the water (no net loss); Enhancement of water-based recreation opportunities 			

006 GREENWAY, COAST AND CHINES PROJECT

Project Ref:		Project Name:	
006		Greenway, Coast and Chines Project	
Project Description:			
This project is aimed at managing and restoring the habitat, landscape quality, accessibility and public realm of the seafront, cliffs and chine's, encouraging sustainable eco-tourism all year round. Tourists and local people will be encouraged to take advantage of attractive and multifunctional cycling, walking and public transport links that connect the coastal strip, the urban areas and wider countryside. Signposting and interpretation will be improved. Coastal habitats and geological features will be protected and managed sensitively.			
Relevant Strategic Objectives:		Relevant Framework Opportunity:	
To work in partnership to deliver multi-functional green infrastructure	√	The Coast and Harbours	√
To improve health and well-being, reduce inequality & encourage community participation	√	Active Travel Network	√
To strengthen the competitive advantages of South East Dorset's economy	√	River Valleys	
To prepare for climate change through mitigation & adaptation	√	Urban Greening Zone	√
To conserve & enhance the unique natural environment & to maximise the positive contribution of economic & housing growth	√	Habitat Restoration Zones	
To create and manage sustainable places informed by local people & local character	√	Coast – A Year Round Destination	√
		Active Travel Routes	√
		Water & Flood Management	
		Greening the Urban Environment	√
		Green Space Creation & Enhancement	
		Habitat Creation & Restoration	
		Celebrating Heritage	
Other Relevant Policy / Programmes / Initiatives:			
Sustainable Community Strategies, Local Plans of Districts and Boroughs, Emerging Local Development Framework Development Plan Documents, Poole Core Strategy, Bournemouth Seafront Strategy, Bournemouth Greenspace Strategy, Local Transport Plan, Shoreline Management Plan.			
Planning Status:		Land Ownership:	
Coastal Enhancement Zone identified in Bournemouth emerging LDF Core Strategy, existing Local Plan policy zonings ie SSSI, green belt, cycleway network, open spaces, conservation areas.		Local authorities and some private ownership, depends on routes/links.	
Proposed Lead Agency:		Suggested Partner Organisations:	
Bournemouth Borough Council, Borough of Poole, Christchurch Borough Council		Natural England, Environment Agency, Other nature conservation bodies, NHS Bournemouth and Poole and Dorset, Private land owners, Public transport providers, Local Businesses	
Indicative Cost:		Funding Opportunities:	
Unknown		Funding Secured:	None
Project Priority:		Other Secured Resources:	Some staff time and remaining section 106 funding

High	Other Opportunities:	Potential EU Life Bid, Potential Environmental Stewardship Scheme, Heathland Mitigation funding, Volunteer organisations.
Long term Management and Maintenance Arrangements:		
Key Actions:		
<ul style="list-style-type: none"> Habitat restoration of chine's and cliffs, expand grazing regime, interpretation and signage, improvement of public realm infrastructure. 		
Outcome(s):		
<ul style="list-style-type: none"> Improve SSSI quality and quantity, restore SSSI to favourable habitat, higher use of sustainable means of access including walking, green flag awards, quality of urban environment 		
Indicator(s):		
<ul style="list-style-type: none"> Visitor satisfaction, numbers using sustainable access, more dispersed use of beaches, increased revenue, SSSI quality and quantity. 		

007 MOORS VALLEY EXTENSION

Project Ref:		Project Name:	
007		Moors Valley Extension	
Project Description:			
<p>This project is for an extension southwards from Moors Valley Country Park, which has the potential to link green areas together to make a north-south recreational area – with Moors Valley as a regional hub. It would link in with existing Forestry Commission areas of West Moors Plantation and Hurn Forest, with further possibilities of linking to Avon Heath Country Park.</p> <p>With the Castleman Trailway running east-west through the area it would allow good access to the Park from Ringwood/New Forest in the east and Ferndown/Poole in the west. It may also provide an off-road route from Bournemouth Airport, Throop and St Catherine’s Hill to link with the Trailway.</p> <p>The Moors River SSSI runs through the area; there may be benefits in a large part of the river system being managed as one unit.</p>			
Relevant Strategic Objectives:		Relevant Framework Opportunity:	
To work in partnership to deliver multi-functional green infrastructure	√	The Coast and Harbours	
To improve health and well-being, reduce inequality & encourage community participation	√	Active Travel Network	√
To strengthen the competitive advantages of South East Dorset’s economy	√	River Valleys	√
To prepare for climate change through mitigation & adaptation		Urban Greening Zone	
To conserve & enhance the unique natural environment & to maximise the positive contribution of economic & housing growth		Habitat Restoration Zones	
To create and manage sustainable places informed by local people & local character		Coast – A Year Round Destination	
		Active Travel Routes	√
		Water & Flood Management	
		Greening the Urban Environment	
		Green Space Creation & Enhancement	√
		Habitat Creation & Restoration	
		Celebrating Heritage	
Other Relevant Policy / Programmes / Initiatives:			
List relevant policy/programmes/initiatives the project helps to deliver:			
Planning Status:		Land Ownership:	
Moors Valley is designated as open space and recreation in the current Local Plan. It is located within the Green Belt, and an area to the north west covering the Moors River System is protected by a SSSI within the site. The Country Park is used for a variety of recreational uses, including; play areas, cycle routes, golf courses, steam railway and lakes. Facilities include cycle hire, Restaurant, Visitor Centre and Ranger service.		Moors Valley is jointly owned by East Dorset District Council and the Forestry Commission. An area to the south of the park owned by the RSPCA is due to be leased to MVCP to extend the area of the Moors River SSSI under the management of the Countryside Ranger Service.	
Proposed Lead Agency:		Suggested Partner Organisations:	
East Dorset District Council		Forestry Commission, Other– Amphibian and Reptile trust, Dorset County Council, Shamba caravan park	
Indicative Cost:		Funding Opportunities:	
		Funding Secured:	

Project Priority:	Other Secured Resources:	
High	Other Opportunities:	
Long term Management and Maintenance Arrangements:		
Key Actions:		
<ul style="list-style-type: none"> • Refine the area. • Identify and consult all landowners/interested parties. • Set up working group • Agree design for area. • Consultation • Final design • Funding required secured • Partnership agreements • Work begins. 		
Outcome(s):		
<ul style="list-style-type: none"> • Creation of a large recreational area which will preserve this area for future generations and may help to relieve the pressure on more sensitive habitats nearby. • Improved non-vehicular access routes north-south of district, leading to fewer car journeys. • Increased opportunities to take part in informal recreational activities, with benefit of more people taking regular exercise. • Opportunities for new businesses e.g. cycle hire facility 		
Indicator(s):		

008 AVON HEATH COUNTRY PARK ENHANCEMENT

Project Ref:		Project Name:	
008		Avon Heath Country Park Enhancement	
Project Description:			
<p>This project is designed to enhance Avon Heath Country Park and create a strategic hub for an area of high conservation value and to mitigate the effects of an increasing requirement for recreation. It will link with Moors Valley Country Park in the north, the New Forest to the north and east and to Bournemouth and Christchurch to the south and east.</p> <p>The project aim is to provide high quality green infrastructure that mitigates pressures on the more sensitive areas of the site. This will be achieved by improving on the educational aspects at the park and creating a unique interactive educational / recreational facility around the Heathland Discovery Centre.</p>			
Relevant Strategic Objectives:		Relevant Framework Opportunity:	
To work in partnership to deliver multi-functional green infrastructure	√	The Coast and Harbours	
To improve health and well-being, reduce inequality & encourage community participation	√	Active Travel Network	√
To strengthen the competitive advantages of South East Dorset's economy	√	River Valleys	
To prepare for climate change through mitigation & adaptation		Urban Greening Zone	
To conserve & enhance the unique natural environment & to maximise the positive contribution of economic & housing growth		Habitat Restoration Zones	√
To create and manage sustainable places informed by local people & local character		Coast – A Year Round Destination	
		Active Travel Routes	√
		Water & Flood Management	
		Greening the Urban Environment	
		Green Space Creation & Enhancement	√
		Habitat Creation & Restoration	√
		Celebrating Heritage	
Other Relevant Policy / Programmes / Initiatives:			
List relevant policy/programmes/initiatives the project helps to deliver:			
Planning Status:		Land Ownership:	
Avon Heath is protected by the Green Belt, is an Area of Great Landscape Value (AGLV), and most parts are SSSI's and SAC's which are national and international nature conservation designations.		The site is owned and managed by Dorset County Council.	
Proposed Lead Agency:		Suggested Partner Organisations:	
Dorset County Council		Natural England, Forestry Commission, East Dorset DC Private Business Sector	
Indicative Cost:		Funding Opportunities:	
£250,000		Funding Secured:	£125,000
Project Priority:		Other Secured Resources:	
Medium		Other Opportunities:	
Long term Management and Maintenance Arrangements:			

Dorset Countryside (Dorset County Council's ranger service) will continue to manage the country park with the current aim to meet Dorset county Council's objective 3 "Enhance Dorset's unique environment." Funding is secured until 2018 for the habitat management/maintenance commitments on the site. The visitor services have the ability to generate income that offsets the overall running costs of the site and area.

Key Actions:

- Develop a "market first" pre-school based on outdoor education that links and compliment directly with the current educational provision at the country park.
- Develop high quality interactive play area based upon the natural environment on the park.
- Improve the infrastructure around the Heathland Discovery Centre to enhance and reflect the special characteristics of the Country Park

Outcome(s):

- Improve the conservation value of the site
- Improve the educational facilities on the park
- Provide a strategic conservation / recreational resource that significantly contributes to the local economy
- Increase the revenue from the visitor services.
- Provide a well run safe inclusive environment for all

Indicator(s):

- The habitat status is improved.
- A pre-school day nursery is developed to cater for 50 pupils.
- The play resource on the country park is redeveloped
- The area around the Heathland Discovery Centre is redeveloped

009 LOCAL FOOD, COMMUNITY GARDEN & ALLOTMENT PROJECT

Project Ref:		Project Name:	
009		Local Food, Community Garden & Allotment Project	
Project Description:			
<p>This project would be designed to promote, encourage and support a range of coordinated Community Gardens & Allotments across the SE Dorset sub region. The main aims would reflect the multi-functionality of Green Infrastructure and include:</p> <ul style="list-style-type: none"> • Promote sustainable urban gardening • Support local food growing for local use • Conserve and enhance local areas of green space for wildlife, amenity and wellbeing • Promote the sustainable use and value of public and private land • Promote social inclusion through horticulture and land management • Promote healthy outdoor exercise and healthy eating <p>Opportunities to consider small scale renewable energy will be built in where possible to increase the sustainable nature of any particular location or site. Opportunities to make these sites 'demonstration' projects e.g. for visiting school groups, will be explored as will opportunities to not only harvest but prepare local food onsite. A free tree scheme will also be considered.</p>			
Relevant Strategic Objectives:		Relevant Framework Opportunity:	
To work in partnership to deliver multi-functional green infrastructure	√	The Coast and Harbours	
To improve health and well-being, reduce inequality & encourage community participation	√	Active Travel Network	
To strengthen the competitive advantages of South East Dorset's economy		River Valleys	
To prepare for climate change through mitigation & adaptation	√	Urban Greening Zone	√
To conserve & enhance the unique natural environment & to maximise the positive contribution of economic & housing growth	√	Habitat Restoration Zones	
To create and manage sustainable places informed by local people & local character	√	Coast – A Year Round Destination	
		Active Travel Routes	
		Water & Flood Management	
		Greening the Urban Environment	√
		Green Space Creation & Enhancement	√
		Habitat Creation & Restoration	
		Celebrating Heritage	
Other Relevant Policy / Programmes / Initiatives:			
List relevant policy/programmes/initiatives the project helps to deliver: Direct from Dorset?			
Planning Status:		Land Ownership:	
		Target local authority and other public sector land first ?	
Proposed Lead Agency:		Suggested Partner Organisations:	
Community Groups?		District, unitary, Town & parish councils as allotment providers, Ground Work UK, NHS, environmental health officers, countryside and open space staff & rangers, 'Direct from Dorset', Community Supported Agriculture, BTCV and Dorset Wildlife Trust. Chalk & Cheese, Federation of Bournemouth Allotment and Leisure Gardeners.	
Indicative Cost:		Funding Opportunities:	
£70,000		Funding Secured:	n/a

Project Priority:	Other Secured Resources:	n/a
High	Other Opportunities:	Grants from lottery, e.g. Community Spaces funding http://www.community-spaces.org.uk/ and partner organisations
Long term Management and Maintenance Arrangements:		
Key Actions:		
<p>The first stage of the project will be to determine the opportunities and interest based on existing survey work and current on site initiatives. A wide range of funding opportunities will be sought to include NHS and lottery.</p> <p>Help and advice will be sought from key and other partners as well as The Federation of City Farms and Community Gardens http://www.farmgarden.org.uk/ which is a charity that supports, promotes and represents city farms and community gardens throughout the UK.</p>		
Outcome(s):		
<ul style="list-style-type: none"> • An extensive coverage of Community Gardens/Allotments across the conurbation • Local production and marketing of 'home-grown' food • Setting up of a sustainable long term method to run them? 		
Indicator(s):		
<ul style="list-style-type: none"> • Numbers of Community Gardens/Allotments • Setting up and operation of local markets • Management arrangements? 		

010 LOCAL OPEN SPACES

Project Ref:		Project Name:	
010		Local Open Spaces	
Project Description:			
<p>Small parks, play areas, or other open spaces (such as those which offer a refuge from busy streets or a meeting place), which cumulatively or in combination can support more significant strategic green infrastructure objectives.</p> <p>Whilst such open spaces would normally be a matter for local recreation strategies, their inclusion as a project here is intended to flag up the importance of integrating small-scale projects within a wider strategy so that they can contribute more effectively to the higher-level strategy vision and objectives. In this way local authorities can give consideration to how their local development frameworks or leisure strategies might prioritise local spaces based upon their contribution to the green infrastructure strategy. For example, a local authority might wish to prioritise the creation of, or improvements to, a local park because it:</p> <ul style="list-style-type: none"> • would provide a key link between strategically important facilities; • supports broader recreational objectives, for example by addressing local needs and thus reducing demands on other under-pressure facilities; • can help to deliver health or community priorities in areas of multiple deprivation; • may be capable of forming part of a larger strategic project within the urban greening zone which can address a variety of cross-cutting priorities. 			
Relevant Strategic Objectives:		Relevant Framework Opportunity:	
To work in partnership to deliver multi-functional green infrastructure	√	The Coast and Harbours	
To improve health and well-being, reduce inequality & encourage community participation	√	Active Travel Network	
To strengthen the competitive advantages of South East Dorset's economy		River Valleys	
To prepare for climate change through mitigation & adaptation		Urban Greening Zone	√
To conserve & enhance the unique natural environment & to maximise the positive contribution of economic & housing growth		Habitat Restoration Zones	
To create and manage sustainable places informed by local people & local character	√	Coast – A Year Round Destination	
		Active Travel Routes	√
		Water & Flood Management	
		Greening the Urban Environment	√
		Green Space Creation & Enhancement	√
		Habitat Creation & Restoration	
		Celebrating Heritage	
Other Relevant Policy / Programmes / Initiatives:			
<p>Adopted and emerging Local Development Frameworks (LDFs); Sustainable Community Strategies; emerging Local Transport Plan for Bournemouth, Dorset and Poole (LTP3); Building a Healthier Bournemouth and Poole – Revised Strategic Plan 2010-2015 (Bournemouth & Poole NHS – specifically in relation to promoting healthier lifestyles); Local authority leisure / open space strategies.</p>			
Planning Status:		Land Ownership:	
Saved local plan policies which specifically reserve parks and open spaces; adopted and emerging local development frameworks		Mostly public (local authority open spaces, schools or highways land)	
Proposed Lead Agency:		Suggested Partner Organisations:	
Local authorities		Bournemouth and Poole NHS / PCT	

Indicative Cost:	Funding Opportunities:	Need to explore opportunities for added value by co-ordinating investment opportunities (local authority leisure strategies; developer contributions; schools investment programmes; NHS/PCT funding towards the promotion of healthier lifestyles; LTP3 schemes)
Principally based upon enhancement of existing spaces – costs will be determined by local authority open space strategies	Funding Secured:	Developer contributions / open spaces strategy funding (dependant upon site and local authority)
Project Priority:	Other Secured Resources:	None
Low in terms of the Green Infrastructure Strategy, but priority might vary depending upon the added value it can bring to other strategies (this will need to be considered on merits of individual cases)	Other Opportunities:	To be determined
Long term Management and Maintenance Arrangements:		
Likely to be managed by local authorities as part of their recreation, education or highways responsibilities.		
Key Actions:		
Local authorities to consider how local open spaces can contribute to strategic green infrastructure priorities when preparing recreation strategies / LDFs.		
Outcome(s):		
Investment in local open spaces to be prioritised having regard to their ability to contribute to the vision and strategic objectives of the South East Dorset Green Infrastructure Strategy.		
Indicator(s):		
To be determined - annual monitoring of expenditure on local open spaces should be recorded against the degree to which it contributes to the Green Infrastructure strategy.		

011 WOODLAND RESTORATION PROJECT

Project Ref:		Project Name:	
011		Woodland Restoration Project	
Project Description:			
This project is intended to provide support to existing policies and projects which enhance ancient woodland and unimproved grasslands through planning policy across the area. It will provide support forest restoration of planted ancient woodland and the protection of individual and stands of trees of amenity and landscape value through Tree Preservation Orders. The ongoing identification of Veteran Trees and trees with heritage value will provide background evidence. Incorporation of relevant strategies within the 'Wild Purbeck' project.			
Relevant Strategic Objectives:		Relevant Framework Opportunity:	
To work in partnership to deliver multi-functional green infrastructure	√	The Coast and Harbours	√
To improve health and well-being, reduce inequality & encourage community participation		Active Travel Network	
To strengthen the competitive advantages of South East Dorset's economy	√	River Valleys	√
To prepare for climate change through mitigation & adaptation	√	Urban Greening Zone	√
To conserve & enhance the unique natural environment & to maximise the positive contribution of economic & housing growth	√	Habitat Restoration Zones	√
To create and manage sustainable places informed by local people & local character	√	Coast – A Year Round Destination	
		Active Travel Routes	
		Water & Flood Management	
		Greening the Urban Environment	√
		Green Space Creation & Enhancement	√
		Habitat Creation & Restoration	√
		Celebrating Heritage	√
Other Relevant Policy / Programmes / Initiatives:			
South West Nature Map, Joint Character Area targets, Cranborne Chase and West Wiltshire Downs AONB Management Plan			
Planning Status:		Land Ownership:	
List any relevant planning status eg.			
Proposed Lead Agency:		Suggested Partner Organisations:	
Natural England?		Forestry Commission/Enterprise, Woodland Trust, Purbeck District Council	
Indicative Cost:		Funding Opportunities:	Woodland Grant Scheme, WIGs, IPF, HLS
		Funding Secured:	No
Project Priority:		Other Secured Resources:	
Medium/Low		Other Opportunities:	
Long term Management and Maintenance Arrangements:			
Self sustaining following enhancement grants from Forestry Commission			
Key Actions:			
<ul style="list-style-type: none"> Draw together information on Ancient/Planted Ancient Woodlands, Veteran Trees and heritage trees. 			
Outcome(s):			
<ul style="list-style-type: none"> Increase TPOs and LDF/DPD planning policy to protect woodland, trees and stands of trees 			
Indicator(s):			
<ul style="list-style-type: none"> Increase in semi-natural ancient woodland and identified veteran trees with TPOs 			

012 HEATHLAND RESTORATION

Project Ref:		Project Name:	
012		Heathland Restoration	
Project Description:			
This project is focussed on opportunities for heathland expansion and in securing land adjacent to heathlands which will allow the species and habitats to be more robust against urban related pressures and predicted changes in climate. Incorporation of relevant strategies within the 'Wild Purbeck' project.			
Relevant Strategic Objectives:		Relevant Framework Opportunity:	
To work in partnership to deliver multi-functional green infrastructure	√	The Coast and Harbours	
To improve health and well-being, reduce inequality & encourage community participation	√	Active Travel Network	
To strengthen the competitive advantages of South East Dorset's economy	√	River Valleys	
To prepare for climate change through mitigation & adaptation	√	Urban Greening Zone	√
To conserve & enhance the unique natural environment & to maximise the positive contribution of economic & housing growth	√	Habitat Restoration Zones	√
To create and manage sustainable places informed by local people & local character	√	Coast – A Year Round Destination	
		Active Travel Routes	
		Water & Flood Management	
		Greening the Urban Environment	√
		Green Space Creation & Enhancement	√
		Habitat Creation & Restoration	√
		Celebrating Heritage	
Other Relevant Policy / Programmes / Initiatives:			
Draft Joint Heathlands DPD, DPD Core Strategies			
Planning Status:		Land Ownership:	
List any relevant planning status		Land ownership or lease details	
Proposed Lead Agency:		Suggested Partner Organisations:	
Natural England		RSPB, DWT, ARC, Local Authorities	
Indicative Cost:		Funding Opportunities:	
		Funding Secured:	Dorset Urban Heaths Grazing Partnership, Interim Planning Framework
Project Priority:		Other Secured Resources:	Access 2 Nature?
High		Other Opportunities:	Landfill Tax
Long term Management and Maintenance Arrangements:			
To be achieved through HLS and as appropriate developer contributions through S106.			
Key Actions:			
<ul style="list-style-type: none"> Increased areas of suitable land secured for heathland expansion, and heathland support 			
Outcome(s):			
<ul style="list-style-type: none"> Land brought into appropriate management 			
Indicator(s):			
<ul style="list-style-type: none"> Area of land secured and in agri-environment schemes/ or with developer funding secured. 			

013 URBAN STREET TREES PROJECT

Project Ref:		Project Name:	
013		Urban Street Trees Project	
Project Description:			
<p>To promote and carry out an audit of existing trees, to implement a major street tree planting programme and to develop sustainable mechanisms to secure their long term management.</p> <p>As a key part of the Urban Greening Zone, trees in towns play a vital role in the urban areas of south east Dorset in the following ways:</p> <ul style="list-style-type: none"> • Helping to mitigate carbon dioxide emissions by absorbing and storing it via photosynthesis and by releasing oxygen. • Providing amenity, wildlife and aesthetic benefits and therefore promoting general health and well being. • Helping to reduce the urban 'heat island' effect by their evaporative cooling and shading. <p>Many trees in the area are over mature or in poor condition and this initiative will not only provide new opportunities for additional tree planting but a means to help ensure the long term management of existing stock. Areas in most need will be targeted first for new tree planting, which will focus primarily on native trees, and consider a variety of areas to plant from highway land and open space to private gardens and open space. By working in partnership, particularly with highway and planning authorities and the statutory undertakers, the project will consider the benefits of setting up a charity or trust to run the whole initiative based for example on the 'Trees for Cities' charity (see http://www.treesforcities.org/index.php)</p> <p>Street tree planting opportunities along major highways routes will be a key target and working with the Local Transport Planning team will therefore be essential.</p>			
Relevant Strategic Objectives:		Relevant Framework Opportunity:	
To work in partnership to deliver multi-functional green infrastructure	√	The Coast and Harbours	
To improve health and well-being, reduce inequality & encourage community participation	√	Active Travel Network	
To strengthen the competitive advantages of South East Dorset's economy	√	River Valleys	
To prepare for climate change through mitigation & adaptation	√	Urban Greening Zone	√
To conserve & enhance the unique natural environment & to maximise the positive contribution of economic & housing growth		Habitat Restoration Zones	
To create and manage sustainable places informed by local people & local character	√	Coast – A Year Round Destination	
		Active Travel Routes	√
		Water & Flood Management	
		Greening the Urban Environment	√
		Green Space Creation & Enhancement	
		Habitat Creation & Restoration	
		Celebrating Heritage	
Other Relevant Policy / Programmes / Initiatives:			
<p>List relevant policy/programmes/initiatives the project helps to deliver:</p> <p>Landscape/townscape character and Tree protection/management policy in Local Development Frameworks/Local Plans, Tree Council policy, Arboricultural Association company objectives, Dorset Wildlife Trust Greenwood & Veteran Tree project, Woodlink policy, SW Regional Forestry Strategy, Dorset Tree, Wood & Forestry Strategy, DCC Tree Policy, DCC Highways Natural Environment Policy, Local Transport Plan 3</p>			
Planning Status:		Land Ownership:	

Landscape/townscape character and Tree protection/management policy in Local Development Frameworks/Local Plans	Target local authority land as first phase followed by other interested landowners	
Proposed Lead Agency:	Suggested Partner Organisations:	
Local authorities and Dorset Tree Officers group	Woodlink, Tree Council, residents/community groups, schools & collages, Dorset Wildlife Trust, Chambers of Trade, Tourism groups, Statutory undertakers, NHS	
Indicative Cost:	Funding Opportunities:	
£200,000-£300,000	Funding Secured:	n/a
Project Priority:	Other Secured Resources:	n/a
High	Other Opportunities:	Grant aid to be explored e.g. Lottery
Long term Management and Maintenance Arrangements:		
Will be assessed as key part of Feasibility study		
Key Actions:		
<ul style="list-style-type: none"> • Condition survey of street trees and subsequent target setting (DCC owned trees audit complete). • Feasibility study into project management, identifying project funding, delivery mechanisms & programming. • A specific audit of highways within the Urban Greening Zone to identify renewal and new planting opportunities. • Assessment of maintenance and long term management implications. • Consider other greening opportunities such as green walls and other types of planting if trees not possible/practical 		
Outcome(s):		
<ul style="list-style-type: none"> • An audit of existing street trees to include condition • An extensive phased tree planting programme. • A sustainable long term management mechanism(s). 		
Indicator(s):		
<ul style="list-style-type: none"> • Number of trees planted • Resourced tree planting programme • Number/use of tree management plans • Creation of a functional & coordinated, sub regional/cross authority management steering/monitoring group 		

014 HISTORIC ENVIRONMENT LIAISON OFFICERS PROJECT

Project Ref:		Project Name:	
014		Historic Environment Liaison	
Project Description:			
<p>This project builds on the existing parish Historic Environment Liaison Officer scheme to increase coverage of this volunteer based scheme. The main aims are to develop community recording and celebratory events to encourage greater participation and active enjoyment of the historic environment. The use of local contacts and recording exercises will help to identify under-used areas for recreation of the historic environment. In particular, identify those areas and monuments accessible (either physically or visually) from rights of way.</p>			
1. Historic Environment Liaison Officer Scheme			
<p>The historic environment is an important factor in people’s enjoyment of the outdoors and their sense of place. This enjoyment tends to focus on a handful of ‘flagship’ sites, with consequences in terms of pressure on monuments and buildings and a reduced quality experience. The historic environment is all around us, yet few residents and communities are aware of the variety of historic buildings and monuments in their locality. The historic environment is a finite and non-renewable resource, worthy of preservation in its own right for the information and enjoyment of future generations. Advice is given and decisions are made on information contained in the Historic Environment Record (HER). A good quality information base is essential to planning and mitigation. Areas known to be weak in the HER are woodlands, heathland, river valleys and the inter-tidal zone. Recorded archaeology is patchy yet, where these areas have been explored, they have revealed.</p>			
<p>The parish Historic Environment Liaison Officer scheme (established 1986) covers about 50% of the rural county. The scheme was established to cover the rural parts of the county, and some of the smaller towns in Dorset have also appointed liaison officers (who may in fact be small groups of people, working together in a parish). There have been many expressions of interest from residents of the larger towns, particularly Poole and Bournemouth, but a way of accommodating this demand has not been found.</p>			
2. Beneath the Trees – past landscapes in woodland.			
<p>The archaeology of woodlands is poorly represented in the Historic Environment Record (a record of all known archaeological finds and features in the county, including historic buildings, upon which planning advice and local management decisions are based). This is because it is much harder to see and understand archaeological remains when they are covered in trees, and access to some areas of woodland in the past has been limited.</p>			
<p>Woodland covers the remains of past, open landscapes but also conceals evidence of the relatively recent exploitation and management of woodland – some of it within living memory.</p>			
<p>Aerial photographs and particularly LIDAR imagery provide an effective way of identifying monuments and buildings in woodland, upon which provisional interpretations and priorities for site visits and more detailed ground survey can be established.</p>			
		Relevant Framework Opportunity:	
To work in partnership to deliver multi-functional green infrastructure	√	The Coast and Harbours	√
To improve health and well-being, reduce inequality & encourage community participation	√	Active Travel Network	
To strengthen the competitive advantages of South East Dorset’s economy		River Valleys	√
To prepare for climate change through mitigation & adaptation		Urban Greening Zone	
To conserve & enhance the unique natural environment & to maximise the positive contribution of economic & housing growth	√	Habitat Restoration Zones	√
To create and manage sustainable places informed by local people & local character	√	Coast – A Year Round Destination	
		Active Travel Routes	
		Water & Flood Management	

	Greening the Urban Environment	
	Green Space Creation & Enhancement	
	Habitat Creation & Restoration	
	Heritage Opportunities	√
Other Relevant Policy / Programmes / Initiatives:		
Planning Status:	Land Ownership:	
	n/a	
Proposed Lead Agency:	Suggested Partner Organisations:	
Dorset County Council	Dorset Association of Parish and Town Councils, English Heritage, Local Authorities, Dorset Conservation and Design Officers Group, Forestry Commission, English Heritage, Woodlink, Woodland Trust, National Trust	
Indicative Cost:	Funding Opportunities:	
	Funding Secured:	
Project Priority:	Other Secured Resources:	
	Other Opportunities:	
Long term Management and Maintenance Arrangements:		
Key Actions:		
<p>For Historic Environment Liaison Officers:</p> <ul style="list-style-type: none"> Recruit liaison officers to complete coverage of the rural parishes. Training events and collaborative development of training materials re survey and recording of historic environment features, local documentary research. Feasibility study into extension of scheme to urban populations, identifying funding, delivery mechanisms, implications in terms of (for example) increased transport requirements. Building on the work of local liaison officers, seek to develop community recording and celebratory events to encourage greater participation, particularly active enjoyment of the historic environment. Use local contacts and recording exercises to identify under-used areas for recreation through the historic environment. In particular, identify those areas and monuments accessible (either physically or visually) from rights of way. Establish cycle of recording and monitoring of local heritage assets by local residents and communities. Feasibility study for identification, assessment of needs and support of small-scale heritage venues, through provision of training for staff and volunteers in, for example, presentation skills, event planning and management. <p>For Beneath the Trees:</p> <ul style="list-style-type: none"> Assess availability and potential of existing sources such as aerial photography, and feed into feasibility study for in-depth mapping (National Mapping Programme) of information. Recruitment and training of volunteers for field survey and documentary research pertaining to woodland lives, crafts and industries. Feed into collaborative development of training materials re woodland-specific monuments. Feed into information base to support decision making process at strategic, local planning and management. Identify areas and monuments of particular significance and sensitivity, with special management needs or suitable for wider interpretation and recreation. 		
Outcome(s):		
<ul style="list-style-type: none"> To increase the information contained in the Historic Environment Record particularly for woodland, heathland, river valleys and inter-tidal zone To preserve the historic environment for future generations To gain a greater understanding of archaeological remains in woodland areas 		
Indicator(s):		
<ul style="list-style-type: none"> % of area covered by Historic Environment Liaison Officers Additions to the Historic Environment Record % coverage of woodland area surveyed 		



Appendix 2 : Key Strategic Project Details

Contents

1. Lower Stour Valley Project
2. Upton Country Park
3. Castleman Trailway
4. Cycleway Project
5. 'Enjoy Water' Project
6. Greenway, Coast and Chine Project
7. Moors Valley extension
8. Avon Heath (Ringwood Forest) Enhancement
9. Local Food & Community Garden Initiative
10. Local Open Space Project
11. Woodland Restoration Project
12. Heath Restoration Project
13. Urban Street Trees
14. Historic Environment Liaison Project

001 LOWER STOUR VALLEY

Project Ref:		Project Name:	
001		Lower Stour Valley	
Project Description:			
<p>This project is the development of a strategy for the river Stour and its floodplain from Sturminster Marshall to Christchurch. It would be an exemplar of sustainable land management and would be a flagship resource. Key aspects are:</p> <ul style="list-style-type: none"> • Provision of an accessible route for walking / cycling and to interlink communities in a sustainable way. • Encourage access to / sustainable development of existing 'hubs' (recreational facilities, greenspace, visitor centres, etc). • To encourage multifunctionality of use via provision of public footpaths, cycle routes, access to river, flood attenuation and biodiversity / landscape enhancements. 			
Relevant Strategic Objectives:		Relevant Framework Opportunity:	
To work in partnership to deliver multi-functional green infrastructure	√	The Coast and Harbours	
To improve health and well-being, reduce inequality & encourage community participation	√	Active Travel Network	√
To strengthen the competitive advantages of South East Dorset's economy	√	River Valleys	√
To prepare for climate change through mitigation & adaptation	√	Urban Greening Zone	√
To conserve and enhance the unique natural environment & to maximise the positive contribution of economic and housing growth	√	Habitat Restoration Zones	√
To create and manage sustainable places informed by local people & local character	√	Coast – A Year Round Destination	
		Active Travel Routes	√
		Water & Flood Management	√
		Greening the Urban Environment	√
		Green Space Creation & Enhancement	√
		Habitat Creation & Restoration	√
		Celebrating Heritage	
Other Relevant Policy / Programmes / Initiatives:			
Catchment Flood Management Plans, Local Transport Plans, Biodiversity Plans, Dorset, Bournemouth and Poole Multi Area Agreement, Local Authority Partnerships.			
Planning Status:		Land Ownership:	
		Multi ownership	
Proposed Lead Agency:		Suggested Partner Organisations:	
Natural England, East Dorset DC, Christchurch BC & Environment Agency.		National Trust, Forestry Commission, Land owners, Sustrans, PCT/NHS, Dorset Wildlife Trust, Bournemouth & Poole College, Bournemouth & West Hants Water, Dorset County Council.	
Indicative Cost:		Funding Opportunities:	
Unknown at this stage. The purpose of the project is to identify a strategy.		Funding Secured:	None secured to date.
Project Priority:		Other Secured Resources:	

High	Other Opportunities:	Heathland DPD. Developer contribs. LTP3. Community Interest Company. EU Life Bid? Lottery Funding? Environmental Stewardships. Sustrans. Groundworks. Landscape Partnership.
Long term Management and Maintenance Arrangements:		
Working in partnership between public / private / voluntary sector.		
Key Actions:		
<ul style="list-style-type: none"> • To open up new greenspace for public access, including clear well signed access routes. • To connect existing communities and 'hubs'. 		
Outcome(s):		
<ul style="list-style-type: none"> • Improved infrastructure. • Increased levels of recreation. • Improved levels of health. • Increased biodiversity and landscape amenity. • Provision of flood attenuation. 		
Indicator(s):		
<ul style="list-style-type: none"> • Level of use (locals and visitors). • Levels of satisfaction. 		

002 UPTON COUNTRY PARK

Project Ref:		Project Name:	
002		Upton Country Park	
Project Description:			
<p>This project will provide new greenspace with outdoor recreation facilities to serve residents across South East Dorset. It will compliment the existing network of Country Parks, such as Moors Valley and Avon Heath and links well to the conurbation via the Castleman Trailway. The Upton Country Park project would deliver:</p> <ul style="list-style-type: none"> • Approximately 60 ha of newly accessible greenspace • Suitable Alternative Natural Greenspace to alleviate recreational pressure from lowland heaths • New outdoor recreation facilities such as cycling routes • Improved tourism experience • Habitat creation adjacent to the Poole Harbour SPA, designed for wildlife and people <p>As this land is already in council ownership its development as new greenspace would offer good value for money and the land and buildings also present income generation potential to secure the land's future maintenance</p>			
Relevant Strategic Objectives:		Relevant Framework Opportunity:	
To work in partnership to deliver multi-functional green infrastructure		The Coast and Harbours	
To improve health and well-being, reduce inequality & encourage community participation		Active Travel Network	√
To strengthen the competitive advantages of South East Dorset's economy		River Valleys	
To prepare for climate change through mitigation & adaptation		Urban Greening Zone	√
To conserve and enhance the unique natural environment & to maximise the positive contribution of economic and housing growth		Habitat Restoration Zones	√
To create and manage sustainable places informed by local people & local character		Coast – A Year Round Destination	
		Active Travel Routes	√
		Water & Flood Management	√
		Greening the Urban Environment	√
		Green Space Creation & Enhancement	√
		Habitat Creation & Restoration	√
		Celebrating Heritage	√
Other Relevant Policy / Programmes / Initiatives:			
Heathland Mitigation DPD, Dorset, Purbeck and Poole Community Strategies, Development Plan Documents.			
Planning Status:		Land Ownership:	
Included in adopted Core Strategy as a Suitable Alternative Natural Greenspace (SANG) Included in the emerging Site Specific Allocations Document		Borough of Poole owned land, part of which falls within Purbeck	
Proposed Lead Agency:		Suggested Partner Organisations:	
Borough of Poole		Dorset Urban Heaths Grazing Partnership Other local authorities – potential to run complimentary and linking activities such as cycle hire linking Avon Heath Country Park and Moors Valley Country Park	
Indicative Cost:		Funding Opportunities:	

Phase 1 - £500,000 Income generating opportunities to help provide revenue for future maintenance	Funding Secured:	£170k allocated from Heathland Mitigation Fund
Project Priority:	Other Secured Resources:	
	Other Opportunities:	Developer contributions from Hamworthy regeneration Investment from other groups and companies being explored
Long term Management and Maintenance Arrangements:		
There are a number of possible delivery options that are currently being explored:		
<ul style="list-style-type: none"> • Direct local authority management • Working in partnership with private &/ or voluntary sector 		
Key Actions:		
<ul style="list-style-type: none"> • To open up new greenspace for public access • To establish new recreational activities at the Country Park that compliment the network of Country Parks and key greenspaces in South East Dorset 		
Outcome(s):		
<ul style="list-style-type: none"> • Increased levels of participation in recreation • Improved habitat quality and biodiversity at a key greenspace adjacent to Poole Harbour • Establishment of Country Park of sub regional importance that compliments other Country Parks and can accommodate high levels of use and activity 		
Indicator(s):		
<ul style="list-style-type: none"> • Number of visitors • Visitor satisfaction • Increased income generated • Number of cyclists on key cycling routes from the town to Upton Country Park along Holes Bay 		

003 CASTLEMAN TRAILWAY

Project Ref:		Project Name:	
003		Castleman Trailway	
Project Description:			
This project will develop the quality and usage of this key strategic access route, which runs from Upton Country Park northwards to Wimborne and connecting on towards Avon Heath Country Park and the New Forest National Park.			
The Castleman Trailway could be a key access route that benefits Purbeck, Poole and East Dorset. The basic route exists but with some improvement to signage, promotion, community engagement and habitat enhancement the route could be far better used and provide a key greenway linking parts of the conurbation to the surrounding area and providing good accessible circular routes.			
Relevant Strategic Objectives:		Relevant Framework Opportunity:	
To work in partnership to deliver multi-functional green infrastructure	√	The Coast and Harbours	
To improve health and well-being, reduce inequality & encourage community participation	√	Active Travel Network	√
To strengthen the competitive advantages of South East Dorset's economy	√	River Valleys	
To prepare for climate change through mitigation & adaptation	√	Urban Greening Zone	√
To conserve and enhance the unique natural environment & to maximise the positive contribution of economic and housing growth	√	Habitat Restoration Zones	√
To create and manage sustainable places informed by local people & local character	√	Coast – A Year Round Destination	
		Active Travel Routes	√
		Water & Flood Management	
		Greening the Urban Environment	√
		Green Space Creation & Enhancement	√
		Habitat Creation & Restoration	√
		Celebrating Heritage	√
Other Relevant Policy / Programmes / Initiatives:			
Sustainable Community Strategies, Local Transport Plan, Local Authorities' Core Strategies and Corporate Plans (Poole, Purbeck and East Dorset), Heathland Mitigation DPD.			
Planning Status:		Land Ownership:	
		Predominantly Borough of Poole, Dorset County Council and Forestry Commission owned land	
Proposed Lead Agency:		Suggested Partner Organisations:	
Dorset County Council		Borough of Poole, East Dorset District Council, Natural England, Sustrans, Urban Heaths Partnership	
Indicative Cost:		Funding Opportunities:	
£250,000		Funding Secured:	Heathland Mitigation Fund £65k
Project Priority:		Other Secured Resources:	East Dorset Developer Contribution £45k Dorset County Council
High		Other Opportunities:	Canford Trust
Long term Management and Maintenance Arrangements:			

Management and maintenance undertaken by relevant land owning local authority in co-ordination with each other to secure economies of scale where possible.

Key Actions:

- Improved infrastructure
- Undertake practical conservation work

Outcome(s):

- Improvements to key strategic route
- Creation of links between strategic routes, communities and primary destination sites
- Improvements for wildlife along routes and links
- Increased knowledge of natural world will encourage responsible behaviour in all habitats including the heaths
- Provision of leaflets, information in electronic formats, interpretation and events and activities will encourage people to visit sites other than heaths

Indicator(s):

- Increased usage of trail
- Visitor satisfaction

004 CYCLEWAYS PROJECT

Project Ref:		Project Name:	
004		Cycleways Project	
Project Description:			
<p>This project will identify and prioritise for upgrade/implementation existing and new cycle routes between major employment centres, residential areas and green open space. These will focus on using green infrastructure corridors, primarily within the urban area to provide linkage to:</p> <ul style="list-style-type: none"> the north and south of South East Dorset major employment sites at Ferndown and Bournemouth Airport areas of green space deprivation other strategic GI cycle networks e.g. the Castleman Trailway and Stour Valley Wareham and Upton <p>The project will:</p> <ol style="list-style-type: none"> Build upon initial consultation and engagement with local people to identify aspirations for such GI cycle routes; Determine the location, routing and type of infrastructure upgrades required; Provide outline designs sufficient for initial public consultation; Provide estimated costs and a prioritised implementation programme; and Identify funding sources and partners. <p>The project will need to take care to ensure that the location or level of activity avoids sensitive locations which could harm the integrity of Natura 2000 and Ramsar sites.</p> <p>It is important to understand that at this stage the project is a planning, not delivery project.</p>			
Relevant Strategic Objectives:		Relevant Framework Opportunity:	
To work in partnership to deliver multi-functional green infrastructure	√	The Coast and Harbours	
To improve health and well-being, reduce inequality & encourage community participation	√	Active Travel Network	√
To strengthen the competitive advantages of South East Dorset's economy	√	River Valleys	
To prepare for climate change through mitigation & adaptation	√	Urban Greening Zone	√
To conserve and enhance the unique natural environment & to maximise the positive contribution of economic and housing growth	√	Habitat Restoration Zones	
To create and manage sustainable places informed by local people & local character		Coast – A Year Round Destination	
		Active Travel Routes	√
		Water & Flood Management	
		Greening the Urban Environment	√
		Green Space Creation & Enhancement	
		Habitat Creation & Restoration	
		Celebrating Heritage	
Other Relevant Policy / Programmes / Initiatives:			
This project will also help to deliver the following policies and initiatives: Local Transport Plan (LTP3), Local Development Framework (LDF), MAA Green Knowledge Economy.			
Planning Status:		Land Ownership:	
The majority of works would most likely be delivered through the LTP3, LDF, Parks improvement schemes and developer led as a result of s106 / planning consent requirements. Some elements of infrastructure, for example any planned bridges, may require planning consent. This would be established by the project.		Whilst public highways, parks and open spaces are likely to form the bulk of the new cycle routes, some of the potential routes may require negotiation or even purchase of land from private or other public landowners	

Proposed Lead Agency:		Suggested Partner Organisations:	
Borough of Poole, Bournemouth Borough Council and Dorset County Council through the LTP3		Sustrans, District Councils, Major Developers and Landowners, Crown Estate	
Indicative Cost:		Funding Opportunities:	
£50,000 to cover desk based planning using GIS, land ownership searches, physical route surveys, preparation outline design including planting / GI issues, preparation of estimated Bill of Quantities and consultation		Funding Secured:	None at this stage
Project Priority:		Other Secured Resources:	None at this stage
High		Other Opportunities:	LTP3 / Sustrans may be able to provide funding towards the project
Long term Management and Maintenance Arrangements:			
Where the routes form part of the public adopted Highway Network they will become the responsibility of the Highway Authority to manage and maintain. Where routes follow Rights of Way it will be the responsibility of the landowner, supported by the relevant Local Authority's Countryside Access team.			
Key Actions:			
<ul style="list-style-type: none"> • Set-up a steering group across the 3 Local Authorities and relevant partners to develop a project plan and secure the necessary financial and staff resource to undertake the project • Undertake a desk based study to identify opportunities for new cycle routes and begin priority assessment based on coherence, directness, safety, comfort and attractiveness of the proposed route corridors and value for money • Develop a prioritised hierarchy of cycle routes for implementation based on ability to increase cycle trips and access to key destinations (including GI and green open space) • Undertake site based conceptual design to determine the route feasibility, select the appropriate infrastructure solution, prepare outline designs and determine estimated costs • Identify potential sources of funding for implementing the proposals and secure funding for route delivery. 			
Outcome(s):			
<ul style="list-style-type: none"> • Increased levels of cycling trips • Increased satisfaction with the provision of cycle facilities in SED 			
Indicator(s):			
<ul style="list-style-type: none"> • Level of cycling trips as measured by LTP3 • Satisfaction with cycle facilities as measured by the National Highways User Satisfaction Survey 			

005 ENJOYING WATER

Project Ref:		Project Name:	
005		Enjoying Water	
Project Description:			
This project is complimentary to the Environment Agency's 'Enjoying Water' partnership strategy. The aim is to stimulate the economic, environmental and social aspects of water-based recreation by maximising the potential of inland and coastal waters. The project will need to take care to ensure that the location or level of activity avoids sensitive locations which could harm the integrity of Natura 2000 and Ramsar sites.			
Relevant Strategic Objectives:		Relevant Framework Opportunity:	
To work in partnership to deliver multi-functional green infrastructure		The Coast and Harbours	√
To improve health and well-being, reduce inequality & encourage community participation	√	Active Travel Network	
To strengthen the competitive advantages of South East Dorset's economy	√	River Valleys	√
To prepare for climate change through mitigation & adaptation		Urban Greening Zone	
To conserve and enhance the unique natural environment & to maximise the positive contribution of economic and housing growth		Habitat Restoration Zones	
To create and manage sustainable places informed by local people & local character		Coast – A Year Round Destination	
		Active Travel Routes	√
		Water & Flood Management	
		Greening the Urban Environment	√
		Green Space Creation & Enhancement	
		Habitat Creation & Restoration	
		Celebrating Heritage	
Other Relevant Policy / Programmes / Initiatives:			
Dorset, Bournemouth and Poole Multi-Area Agreement?, Dorset Community Strategy?, Poole Community Strategy?			
Planning Status:		Land Ownership:	
		Multi ownership.	
Proposed Lead Agency:		Suggested Partner Organisations:	
Environment Agency		Natural England, Sport England, Dorset CC, Borough of Poole, Bournemouth BC and South East Dorset Local Authorities.	
Indicative Cost:		Funding Opportunities:	
Unknown		Funding Secured:	No
Project Priority:		Other Secured Resources:	
Medium?		Other Opportunities:	
Long term Management and Maintenance Arrangements:			
Key Actions:			
<ul style="list-style-type: none"> Development of strategies and joint working which promote sensitive water-based recreation 			
Outcome(s):			
<ul style="list-style-type: none"> Existing access to the water (including slipways and footpaths) are protected and enhanced and new opportunities provided 			
Indicator(s):			
<ul style="list-style-type: none"> Retention of access to the water (no net loss); Enhancement of water-based recreation opportunities 			

006 GREENWAY, COAST AND CHINES PROJECT

Project Ref:		Project Name:	
006		Greenway, Coast and Chines Project	
Project Description:			
This project is aimed at managing and restoring the habitat, landscape quality, accessibility and public realm of the seafront, cliffs and chine's, encouraging sustainable eco-tourism all year round. Tourists and local people will be encouraged to take advantage of attractive and multifunctional cycling, walking and public transport links that connect the coastal strip, the urban areas and wider countryside. Signposting and interpretation will be improved. Coastal habitats and geological features will be protected and managed sensitively.			
Relevant Strategic Objectives:		Relevant Framework Opportunity:	
To work in partnership to deliver multi-functional green infrastructure	√	The Coast and Harbours	√
To improve health and well-being, reduce inequality & encourage community participation	√	Active Travel Network	√
To strengthen the competitive advantages of South East Dorset's economy	√	River Valleys	
To prepare for climate change through mitigation & adaptation	√	Urban Greening Zone	√
To conserve & enhance the unique natural environment & to maximise the positive contribution of economic & housing growth	√	Habitat Restoration Zones	
To create and manage sustainable places informed by local people & local character	√	Coast – A Year Round Destination	√
		Active Travel Routes	√
		Water & Flood Management	
		Greening the Urban Environment	√
		Green Space Creation & Enhancement	
		Habitat Creation & Restoration	
		Celebrating Heritage	
Other Relevant Policy / Programmes / Initiatives:			
Sustainable Community Strategies, Local Plans of Districts and Boroughs, Emerging Local Development Framework Development Plan Documents, Poole Core Strategy, Bournemouth Seafront Strategy, Bournemouth Greenspace Strategy, Local Transport Plan, Shoreline Management Plan.			
Planning Status:		Land Ownership:	
Coastal Enhancement Zone identified in Bournemouth emerging LDF Core Strategy, existing Local Plan policy zonings ie SSSI, green belt, cycleway network, open spaces, conservation areas.		Local authorities and some private ownership, depends on routes/links.	
Proposed Lead Agency:		Suggested Partner Organisations:	
Bournemouth Borough Council, Borough of Poole, Christchurch Borough Council		Natural England, Environment Agency, Other nature conservation bodies, NHS Bournemouth and Poole and Dorset, Private land owners, Public transport providers, Local Businesses	
Indicative Cost:		Funding Opportunities:	
Unknown		Funding Secured:	None
Project Priority:		Other Secured Resources:	Some staff time and remaining section 106 funding

High	Other Opportunities:	Potential EU Life Bid, Potential Environmental Stewardship Scheme, Heathland Mitigation funding, Volunteer organisations.
Long term Management and Maintenance Arrangements:		
Key Actions:		
<ul style="list-style-type: none"> Habitat restoration of chine's and cliffs, expand grazing regime, interpretation and signage, improvement of public realm infrastructure. 		
Outcome(s):		
<ul style="list-style-type: none"> Improve SSSI quality and quantity, restore SSSI to favourable habitat, higher use of sustainable means of access including walking, green flag awards, quality of urban environment 		
Indicator(s):		
<ul style="list-style-type: none"> Visitor satisfaction, numbers using sustainable access, more dispersed use of beaches, increased revenue, SSSI quality and quantity. 		

007 MOORS VALLEY EXTENSION

Project Ref:		Project Name:	
007		Moors Valley Extension	
Project Description:			
<p>This project is for an extension southwards from Moors Valley Country Park, which has the potential to link green areas together to make a north-south recreational area – with Moors Valley as a regional hub. It would link in with existing Forestry Commission areas of West Moors Plantation and Hurn Forest, with further possibilities of linking to Avon Heath Country Park.</p> <p>With the Castleman Trailway running east-west through the area it would allow good access to the Park from Ringwood/New Forest in the east and Ferndown/Poole in the west. It may also provide an off-road route from Bournemouth Airport, Throop and St Catherine’s Hill to link with the Trailway.</p> <p>The Moors River SSSI runs through the area; there may be benefits in a large part of the river system being managed as one unit.</p>			
Relevant Strategic Objectives:		Relevant Framework Opportunity:	
To work in partnership to deliver multi-functional green infrastructure	√	The Coast and Harbours	
To improve health and well-being, reduce inequality & encourage community participation	√	Active Travel Network	√
To strengthen the competitive advantages of South East Dorset’s economy	√	River Valleys	√
To prepare for climate change through mitigation & adaptation		Urban Greening Zone	
To conserve & enhance the unique natural environment & to maximise the positive contribution of economic & housing growth		Habitat Restoration Zones	
To create and manage sustainable places informed by local people & local character		Coast – A Year Round Destination	
		Active Travel Routes	√
		Water & Flood Management	
		Greening the Urban Environment	
		Green Space Creation & Enhancement	√
		Habitat Creation & Restoration	
		Celebrating Heritage	
Other Relevant Policy / Programmes / Initiatives:			
List relevant policy/programmes/initiatives the project helps to deliver:			
Planning Status:		Land Ownership:	
Moors Valley is designated as open space and recreation in the current Local Plan. It is located within the Green Belt, and an area to the north west covering the Moors River System is protected by a SSSI within the site. The Country Park is used for a variety of recreational uses, including; play areas, cycle routes, golf courses, steam railway and lakes. Facilities include cycle hire, Restaurant, Visitor Centre and Ranger service.		Moors Valley is jointly owned by East Dorset District Council and the Forestry Commission. An area to the south of the park owned by the RSPCA is due to be leased to MVCP to extend the area of the Moors River SSSI under the management of the Countryside Ranger Service.	
Proposed Lead Agency:		Suggested Partner Organisations:	
East Dorset District Council		Forestry Commission, Other– Amphibian and Reptile trust, Dorset County Council, Shamba caravan park	
Indicative Cost:		Funding Opportunities:	
		Funding Secured:	

Project Priority:	Other Secured Resources:	
High	Other Opportunities:	
Long term Management and Maintenance Arrangements:		
Key Actions:		
<ul style="list-style-type: none"> • Refine the area. • Identify and consult all landowners/interested parties. • Set up working group • Agree design for area. • Consultation • Final design • Funding required secured • Partnership agreements • Work begins. 		
Outcome(s):		
<ul style="list-style-type: none"> • Creation of a large recreational area which will preserve this area for future generations and may help to relieve the pressure on more sensitive habitats nearby. • Improved non-vehicular access routes north-south of district, leading to fewer car journeys. • Increased opportunities to take part in informal recreational activities, with benefit of more people taking regular exercise. • Opportunities for new businesses e.g. cycle hire facility 		
Indicator(s):		

008 AVON HEATH COUNTRY PARK ENHANCEMENT

Project Ref:		Project Name:	
008		Avon Heath Country Park Enhancement	
Project Description:			
<p>This project is designed to enhance Avon Heath Country Park and create a strategic hub for an area of high conservation value and to mitigate the effects of an increasing requirement for recreation. It will link with Moors Valley Country Park in the north, the New Forest to the north and east and to Bournemouth and Christchurch to the south and east.</p> <p>The project aim is to provide high quality green infrastructure that mitigates pressures on the more sensitive areas of the site. This will be achieved by improving on the educational aspects at the park and creating a unique interactive educational / recreational facility around the Heathland Discovery Centre.</p>			
Relevant Strategic Objectives:		Relevant Framework Opportunity:	
To work in partnership to deliver multi-functional green infrastructure	√	The Coast and Harbours	
To improve health and well-being, reduce inequality & encourage community participation	√	Active Travel Network	√
To strengthen the competitive advantages of South East Dorset's economy	√	River Valleys	
To prepare for climate change through mitigation & adaptation		Urban Greening Zone	
To conserve & enhance the unique natural environment & to maximise the positive contribution of economic & housing growth		Habitat Restoration Zones	√
To create and manage sustainable places informed by local people & local character		Coast – A Year Round Destination	
		Active Travel Routes	√
		Water & Flood Management	
		Greening the Urban Environment	
		Green Space Creation & Enhancement	√
		Habitat Creation & Restoration	√
		Celebrating Heritage	
Other Relevant Policy / Programmes / Initiatives:			
List relevant policy/programmes/initiatives the project helps to deliver:			
Planning Status:		Land Ownership:	
Avon Heath is protected by the Green Belt, is an Area of Great Landscape Value (AGLV), and most parts are SSSI's and SAC's which are national and international nature conservation designations.		The site is owned and managed by Dorset County Council.	
Proposed Lead Agency:		Suggested Partner Organisations:	
Dorset County Council		Natural England, Forestry Commission, East Dorset DC Private Business Sector	
Indicative Cost:		Funding Opportunities:	
£250,000		Funding Secured:	£125,000
Project Priority:		Other Secured Resources:	
Medium		Other Opportunities:	
Long term Management and Maintenance Arrangements:			

Dorset Countryside (Dorset County Council's ranger service) will continue to manage the country park with the current aim to meet Dorset county Council's objective 3 "Enhance Dorset's unique environment." Funding is secured until 2018 for the habitat management/maintenance commitments on the site. The visitor services have the ability to generate income that offsets the overall running costs of the site and area.

Key Actions:

- Develop a "market first" pre-school based on outdoor education that links and compliment directly with the current educational provision at the country park.
- Develop high quality interactive play area based upon the natural environment on the park.
- Improve the infrastructure around the Heathland Discovery Centre to enhance and reflect the special characteristics of the Country Park

Outcome(s):

- Improve the conservation value of the site
- Improve the educational facilities on the park
- Provide a strategic conservation / recreational resource that significantly contributes to the local economy
- Increase the revenue from the visitor services.
- Provide a well run safe inclusive environment for all

Indicator(s):

- The habitat status is improved.
- A pre-school day nursery is developed to cater for 50 pupils.
- The play resource on the country park is redeveloped
- The area around the Heathland Discovery Centre is redeveloped

009 LOCAL FOOD, COMMUNITY GARDEN & ALLOTMENT PROJECT

Project Ref:		Project Name:	
009		Local Food, Community Garden & Allotment Project	
Project Description:			
<p>This project would be designed to promote, encourage and support a range of coordinated Community Gardens & Allotments across the SE Dorset sub region. The main aims would reflect the multi-functionality of Green Infrastructure and include:</p> <ul style="list-style-type: none"> • Promote sustainable urban gardening • Support local food growing for local use • Conserve and enhance local areas of green space for wildlife, amenity and wellbeing • Promote the sustainable use and value of public and private land • Promote social inclusion through horticulture and land management • Promote healthy outdoor exercise and healthy eating <p>Opportunities to consider small scale renewable energy will be built in where possible to increase the sustainable nature of any particular location or site. Opportunities to make these sites 'demonstration' projects e.g. for visiting school groups, will be explored as will opportunities to not only harvest but prepare local food onsite. A free tree scheme will also be considered.</p>			
Relevant Strategic Objectives:		Relevant Framework Opportunity:	
To work in partnership to deliver multi-functional green infrastructure	√	The Coast and Harbours	
To improve health and well-being, reduce inequality & encourage community participation	√	Active Travel Network	
To strengthen the competitive advantages of South East Dorset's economy		River Valleys	
To prepare for climate change through mitigation & adaptation	√	Urban Greening Zone	√
To conserve & enhance the unique natural environment & to maximise the positive contribution of economic & housing growth	√	Habitat Restoration Zones	
To create and manage sustainable places informed by local people & local character	√	Coast – A Year Round Destination	
		Active Travel Routes	
		Water & Flood Management	
		Greening the Urban Environment	√
		Green Space Creation & Enhancement	√
		Habitat Creation & Restoration	
		Celebrating Heritage	
Other Relevant Policy / Programmes / Initiatives:			
List relevant policy/programmes/initiatives the project helps to deliver: Direct from Dorset?			
Planning Status:		Land Ownership:	
		Target local authority and other public sector land first ?	
Proposed Lead Agency:		Suggested Partner Organisations:	
Community Groups?		District, unitary, Town & parish councils as allotment providers, Ground Work UK, NHS, environmental health officers, countryside and open space staff & rangers, 'Direct from Dorset', Community Supported Agriculture, BTCV and Dorset Wildlife Trust. Chalk & Cheese, Federation of Bournemouth Allotment and Leisure Gardeners.	
Indicative Cost:		Funding Opportunities:	
£70,000		Funding Secured:	n/a

Project Priority:	Other Secured Resources:	n/a
High	Other Opportunities:	Grants from lottery, e.g. Community Spaces funding http://www.community-spaces.org.uk/ and partner organisations
Long term Management and Maintenance Arrangements:		
Key Actions:		
<p>The first stage of the project will be to determine the opportunities and interest based on existing survey work and current on site initiatives. A wide range of funding opportunities will be sought to include NHS and lottery.</p> <p>Help and advice will be sought from key and other partners as well as The Federation of City Farms and Community Gardens http://www.farmgarden.org.uk/ which is a charity that supports, promotes and represents city farms and community gardens throughout the UK.</p>		
Outcome(s):		
<ul style="list-style-type: none"> • An extensive coverage of Community Gardens/Allotments across the conurbation • Local production and marketing of 'home-grown' food • Setting up of a sustainable long term method to run them? 		
Indicator(s):		
<ul style="list-style-type: none"> • Numbers of Community Gardens/Allotments • Setting up and operation of local markets • Management arrangements? 		

010 LOCAL OPEN SPACES

Project Ref:		Project Name:	
010		Local Open Spaces	
Project Description:			
<p>Small parks, play areas, or other open spaces (such as those which offer a refuge from busy streets or a meeting place), which cumulatively or in combination can support more significant strategic green infrastructure objectives.</p> <p>Whilst such open spaces would normally be a matter for local recreation strategies, their inclusion as a project here is intended to flag up the importance of integrating small-scale projects within a wider strategy so that they can contribute more effectively to the higher-level strategy vision and objectives. In this way local authorities can give consideration to how their local development frameworks or leisure strategies might prioritise local spaces based upon their contribution to the green infrastructure strategy. For example, a local authority might wish to prioritise the creation of, or improvements to, a local park because it:</p> <ul style="list-style-type: none"> • would provide a key link between strategically important facilities; • supports broader recreational objectives, for example by addressing local needs and thus reducing demands on other under-pressure facilities; • can help to deliver health or community priorities in areas of multiple deprivation; • may be capable of forming part of a larger strategic project within the urban greening zone which can address a variety of cross-cutting priorities. 			
Relevant Strategic Objectives:		Relevant Framework Opportunity:	
To work in partnership to deliver multi-functional green infrastructure	√	The Coast and Harbours	
To improve health and well-being, reduce inequality & encourage community participation	√	Active Travel Network	
To strengthen the competitive advantages of South East Dorset's economy		River Valleys	
To prepare for climate change through mitigation & adaptation		Urban Greening Zone	√
To conserve & enhance the unique natural environment & to maximise the positive contribution of economic & housing growth		Habitat Restoration Zones	
To create and manage sustainable places informed by local people & local character	√	Coast – A Year Round Destination	
		Active Travel Routes	√
		Water & Flood Management	
		Greening the Urban Environment	√
		Green Space Creation & Enhancement	√
		Habitat Creation & Restoration	
		Celebrating Heritage	
Other Relevant Policy / Programmes / Initiatives:			
<p>Adopted and emerging Local Development Frameworks (LDFs); Sustainable Community Strategies; emerging Local Transport Plan for Bournemouth, Dorset and Poole (LTP3); Building a Healthier Bournemouth and Poole – Revised Strategic Plan 2010-2015 (Bournemouth & Poole NHS – specifically in relation to promoting healthier lifestyles); Local authority leisure / open space strategies.</p>			
Planning Status:		Land Ownership:	
Saved local plan policies which specifically reserve parks and open spaces; adopted and emerging local development frameworks		Mostly public (local authority open spaces, schools or highways land)	
Proposed Lead Agency:		Suggested Partner Organisations:	
Local authorities		Bournemouth and Poole NHS / PCT	

Indicative Cost:	Funding Opportunities:	Need to explore opportunities for added value by co-ordinating investment opportunities (local authority leisure strategies; developer contributions; schools investment programmes; NHS/PCT funding towards the promotion of healthier lifestyles; LTP3 schemes)
Principally based upon enhancement of existing spaces – costs will be determined by local authority open space strategies	Funding Secured:	Developer contributions / open spaces strategy funding (dependant upon site and local authority)
Project Priority:	Other Secured Resources:	None
Low in terms of the Green Infrastructure Strategy, but priority might vary depending upon the added value it can bring to other strategies (this will need to be considered on merits of individual cases)	Other Opportunities:	To be determined
Long term Management and Maintenance Arrangements:		
Likely to be managed by local authorities as part of their recreation, education or highways responsibilities.		
Key Actions:		
Local authorities to consider how local open spaces can contribute to strategic green infrastructure priorities when preparing recreation strategies / LDFs.		
Outcome(s):		
Investment in local open spaces to be prioritised having regard to their ability to contribute to the vision and strategic objectives of the South East Dorset Green Infrastructure Strategy.		
Indicator(s):		
To be determined - annual monitoring of expenditure on local open spaces should be recorded against the degree to which it contributes to the Green Infrastructure strategy.		

011 WOODLAND RESTORATION PROJECT

Project Ref:		Project Name:	
011		Woodland Restoration Project	
Project Description:			
This project is intended to provide support to existing policies and projects which enhance ancient woodland and unimproved grasslands through planning policy across the area. It will provide support forest restoration of planted ancient woodland and the protection of individual and stands of trees of amenity and landscape value through Tree Preservation Orders. The ongoing identification of Veteran Trees and trees with heritage value will provide background evidence. Incorporation of relevant strategies within the 'Wild Purbeck' project.			
Relevant Strategic Objectives:		Relevant Framework Opportunity:	
To work in partnership to deliver multi-functional green infrastructure	√	The Coast and Harbours	√
To improve health and well-being, reduce inequality & encourage community participation		Active Travel Network	
To strengthen the competitive advantages of South East Dorset's economy	√	River Valleys	√
To prepare for climate change through mitigation & adaptation	√	Urban Greening Zone	√
To conserve & enhance the unique natural environment & to maximise the positive contribution of economic & housing growth	√	Habitat Restoration Zones	√
To create and manage sustainable places informed by local people & local character	√	Coast – A Year Round Destination	
		Active Travel Routes	
		Water & Flood Management	
		Greening the Urban Environment	√
		Green Space Creation & Enhancement	√
		Habitat Creation & Restoration	√
		Celebrating Heritage	√
Other Relevant Policy / Programmes / Initiatives:			
South West Nature Map, Joint Character Area targets, Cranborne Chase and West Wiltshire Downs AONB Management Plan			
Planning Status:		Land Ownership:	
List any relevant planning status eg.			
Proposed Lead Agency:		Suggested Partner Organisations:	
Natural England?		Forestry Commission/Enterprise, Woodland Trust, Purbeck District Council	
Indicative Cost:		Funding Opportunities:	Woodland Grant Scheme, WIGs, IPF, HLS
		Funding Secured:	No
Project Priority:		Other Secured Resources:	
Medium/Low		Other Opportunities:	
Long term Management and Maintenance Arrangements:			
Self sustaining following enhancement grants from Forestry Commission			
Key Actions:			
<ul style="list-style-type: none"> Draw together information on Ancient/Planted Ancient Woodlands, Veteran Trees and heritage trees. 			
Outcome(s):			
<ul style="list-style-type: none"> Increase TPOs and LDF/DPD planning policy to protect woodland, trees and stands of trees 			
Indicator(s):			
<ul style="list-style-type: none"> Increase in semi-natural ancient woodland and identified veteran trees with TPOs 			

012 HEATHLAND RESTORATION

Project Ref:		Project Name:	
012		Heathland Restoration	
Project Description:			
This project is focussed on opportunities for heathland expansion and in securing land adjacent to heathlands which will allow the species and habitats to be more robust against urban related pressures and predicted changes in climate. Incorporation of relevant strategies within the 'Wild Purbeck' project.			
Relevant Strategic Objectives:		Relevant Framework Opportunity:	
To work in partnership to deliver multi-functional green infrastructure	√	The Coast and Harbours	
To improve health and well-being, reduce inequality & encourage community participation	√	Active Travel Network	
To strengthen the competitive advantages of South East Dorset's economy	√	River Valleys	
To prepare for climate change through mitigation & adaptation	√	Urban Greening Zone	√
To conserve & enhance the unique natural environment & to maximise the positive contribution of economic & housing growth	√	Habitat Restoration Zones	√
To create and manage sustainable places informed by local people & local character	√	Coast – A Year Round Destination	
		Active Travel Routes	
		Water & Flood Management	
		Greening the Urban Environment	√
		Green Space Creation & Enhancement	√
		Habitat Creation & Restoration	√
		Celebrating Heritage	
Other Relevant Policy / Programmes / Initiatives:			
Draft Joint Heathlands DPD, DPD Core Strategies			
Planning Status:		Land Ownership:	
List any relevant planning status		Land ownership or lease details	
Proposed Lead Agency:		Suggested Partner Organisations:	
Natural England		RSPB, DWT, ARC, Local Authorities	
Indicative Cost:		Funding Opportunities:	
		Funding Secured:	Dorset Urban Heaths Grazing Partnership, Interim Planning Framework
Project Priority:		Other Secured Resources:	Access 2 Nature?
High		Other Opportunities:	Landfill Tax
Long term Management and Maintenance Arrangements:			
To be achieved through HLS and as appropriate developer contributions through S106.			
Key Actions:			
<ul style="list-style-type: none"> Increased areas of suitable land secured for heathland expansion, and heathland support 			
Outcome(s):			
<ul style="list-style-type: none"> Land brought into appropriate management 			
Indicator(s):			
<ul style="list-style-type: none"> Area of land secured and in agri-environment schemes/ or with developer funding secured. 			

013 URBAN STREET TREES PROJECT

Project Ref:		Project Name:	
013		Urban Street Trees Project	
Project Description:			
<p>To promote and carry out an audit of existing trees, to implement a major street tree planting programme and to develop sustainable mechanisms to secure their long term management.</p> <p>As a key part of the Urban Greening Zone, trees in towns play a vital role in the urban areas of south east Dorset in the following ways:</p> <ul style="list-style-type: none"> • Helping to mitigate carbon dioxide emissions by absorbing and storing it via photosynthesis and by releasing oxygen. • Providing amenity, wildlife and aesthetic benefits and therefore promoting general health and well being. • Helping to reduce the urban 'heat island' effect by their evaporative cooling and shading. <p>Many trees in the area are over mature or in poor condition and this initiative will not only provide new opportunities for additional tree planting but a means to help ensure the long term management of existing stock. Areas in most need will be targeted first for new tree planting, which will focus primarily on native trees, and consider a variety of areas to plant from highway land and open space to private gardens and open space. By working in partnership, particularly with highway and planning authorities and the statutory undertakers, the project will consider the benefits of setting up a charity or trust to run the whole initiative based for example on the 'Trees for Cities' charity (see http://www.treesforcities.org/index.php)</p> <p>Street tree planting opportunities along major highways routes will be a key target and working with the Local Transport Planning team will therefore be essential.</p>			
Relevant Strategic Objectives:		Relevant Framework Opportunity:	
To work in partnership to deliver multi-functional green infrastructure	√	The Coast and Harbours	
To improve health and well-being, reduce inequality & encourage community participation	√	Active Travel Network	
To strengthen the competitive advantages of South East Dorset's economy	√	River Valleys	
To prepare for climate change through mitigation & adaptation	√	Urban Greening Zone	√
To conserve & enhance the unique natural environment & to maximise the positive contribution of economic & housing growth		Habitat Restoration Zones	
To create and manage sustainable places informed by local people & local character	√	Coast – A Year Round Destination	
		Active Travel Routes	√
		Water & Flood Management	
		Greening the Urban Environment	√
		Green Space Creation & Enhancement	
		Habitat Creation & Restoration	
		Celebrating Heritage	
Other Relevant Policy / Programmes / Initiatives:			
<p>List relevant policy/programmes/initiatives the project helps to deliver:</p> <p>Landscape/townscape character and Tree protection/management policy in Local Development Frameworks/Local Plans, Tree Council policy, Arboricultural Association company objectives, Dorset Wildlife Trust Greenwood & Veteran Tree project, Woodlink policy, SW Regional Forestry Strategy, Dorset Tree, Wood & Forestry Strategy, DCC Tree Policy, DCC Highways Natural Environment Policy, Local Transport Plan 3</p>			
Planning Status:		Land Ownership:	

Landscape/townscape character and Tree protection/management policy in Local Development Frameworks/Local Plans	Target local authority land as first phase followed by other interested landowners	
Proposed Lead Agency:	Suggested Partner Organisations:	
Local authorities and Dorset Tree Officers group	Woodlink, Tree Council, residents/community groups, schools & collages, Dorset Wildlife Trust, Chambers of Trade, Tourism groups, Statutory undertakers, NHS	
Indicative Cost:	Funding Opportunities:	
£200,000-£300,000	Funding Secured:	n/a
Project Priority:	Other Secured Resources:	n/a
High	Other Opportunities:	Grant aid to be explored e.g. Lottery
Long term Management and Maintenance Arrangements:		
Will be assessed as key part of Feasibility study		
Key Actions:		
<ul style="list-style-type: none"> • Condition survey of street trees and subsequent target setting (DCC owned trees audit complete). • Feasibility study into project management, identifying project funding, delivery mechanisms & programming. • A specific audit of highways within the Urban Greening Zone to identify renewal and new planting opportunities. • Assessment of maintenance and long term management implications. • Consider other greening opportunities such as green walls and other types of planting if trees not possible/practical 		
Outcome(s):		
<ul style="list-style-type: none"> • An audit of existing street trees to include condition • An extensive phased tree planting programme. • A sustainable long term management mechanism(s). 		
Indicator(s):		
<ul style="list-style-type: none"> • Number of trees planted • Resourced tree planting programme • Number/use of tree management plans • Creation of a functional & coordinated, sub regional/cross authority management steering/monitoring group 		

014 HISTORIC ENVIRONMENT LIAISON OFFICERS PROJECT

Project Ref:		Project Name:	
014		Historic Environment Liaison	
Project Description:			
<p>This project builds on the existing parish Historic Environment Liaison Officer scheme to increase coverage of this volunteer based scheme. The main aims are to develop community recording and celebratory events to encourage greater participation and active enjoyment of the historic environment. The use of local contacts and recording exercises will help to identify under-used areas for recreation of the historic environment. In particular, identify those areas and monuments accessible (either physically or visually) from rights of way.</p>			
1. Historic Environment Liaison Officer Scheme			
<p>The historic environment is an important factor in people’s enjoyment of the outdoors and their sense of place. This enjoyment tends to focus on a handful of ‘flagship’ sites, with consequences in terms of pressure on monuments and buildings and a reduced quality experience. The historic environment is all around us, yet few residents and communities are aware of the variety of historic buildings and monuments in their locality. The historic environment is a finite and non-renewable resource, worthy of preservation in its own right for the information and enjoyment of future generations. Advice is given and decisions are made on information contained in the Historic Environment Record (HER). A good quality information base is essential to planning and mitigation. Areas known to be weak in the HER are woodlands, heathland, river valleys and the inter-tidal zone. Recorded archaeology is patchy yet, where these areas have been explored, they have revealed.</p>			
<p>The parish Historic Environment Liaison Officer scheme (established 1986) covers about 50% of the rural county. The scheme was established to cover the rural parts of the county, and some of the smaller towns in Dorset have also appointed liaison officers (who may in fact be small groups of people, working together in a parish). There have been many expressions of interest from residents of the larger towns, particularly Poole and Bournemouth, but a way of accommodating this demand has not been found.</p>			
2. Beneath the Trees – past landscapes in woodland.			
<p>The archaeology of woodlands is poorly represented in the Historic Environment Record (a record of all known archaeological finds and features in the county, including historic buildings, upon which planning advice and local management decisions are based). This is because it is much harder to see and understand archaeological remains when they are covered in trees, and access to some areas of woodland in the past has been limited.</p>			
<p>Woodland covers the remains of past, open landscapes but also conceals evidence of the relatively recent exploitation and management of woodland – some of it within living memory.</p>			
<p>Aerial photographs and particularly LIDAR imagery provide an effective way of identifying monuments and buildings in woodland, upon which provisional interpretations and priorities for site visits and more detailed ground survey can be established.</p>			
		Relevant Framework Opportunity:	
To work in partnership to deliver multi-functional green infrastructure	√	The Coast and Harbours	√
To improve health and well-being, reduce inequality & encourage community participation	√	Active Travel Network	
To strengthen the competitive advantages of South East Dorset’s economy		River Valleys	√
To prepare for climate change through mitigation & adaptation		Urban Greening Zone	
To conserve & enhance the unique natural environment & to maximise the positive contribution of economic & housing growth	√	Habitat Restoration Zones	√
To create and manage sustainable places informed by local people & local character	√	Coast – A Year Round Destination	
		Active Travel Routes	
		Water & Flood Management	

	Greening the Urban Environment	
	Green Space Creation & Enhancement	
	Habitat Creation & Restoration	
	Heritage Opportunities	√
Other Relevant Policy / Programmes / Initiatives:		
Planning Status:	Land Ownership:	
	n/a	
Proposed Lead Agency:	Suggested Partner Organisations:	
Dorset County Council	Dorset Association of Parish and Town Councils, English Heritage, Local Authorities, Dorset Conservation and Design Officers Group, Forestry Commission, English Heritage, Woodlink, Woodland Trust, National Trust	
Indicative Cost:	Funding Opportunities:	
	Funding Secured:	
Project Priority:	Other Secured Resources:	
	Other Opportunities:	
Long term Management and Maintenance Arrangements:		
Key Actions:		
<p>For Historic Environment Liaison Officers:</p> <ul style="list-style-type: none"> Recruit liaison officers to complete coverage of the rural parishes. Training events and collaborative development of training materials re survey and recording of historic environment features, local documentary research. Feasibility study into extension of scheme to urban populations, identifying funding, delivery mechanisms, implications in terms of (for example) increased transport requirements. Building on the work of local liaison officers, seek to develop community recording and celebratory events to encourage greater participation, particularly active enjoyment of the historic environment. Use local contacts and recording exercises to identify under-used areas for recreation through the historic environment. In particular, identify those areas and monuments accessible (either physically or visually) from rights of way. Establish cycle of recording and monitoring of local heritage assets by local residents and communities. Feasibility study for identification, assessment of needs and support of small-scale heritage venues, through provision of training for staff and volunteers in, for example, presentation skills, event planning and management. <p>For Beneath the Trees:</p> <ul style="list-style-type: none"> Assess availability and potential of existing sources such as aerial photography, and feed into feasibility study for in-depth mapping (National Mapping Programme) of information. Recruitment and training of volunteers for field survey and documentary research pertaining to woodland lives, crafts and industries. Feed into collaborative development of training materials re woodland-specific monuments. Feed into information base to support decision making process at strategic, local planning and management. Identify areas and monuments of particular significance and sensitivity, with special management needs or suitable for wider interpretation and recreation. 		
Outcome(s):		
<ul style="list-style-type: none"> To increase the information contained in the Historic Environment Record particularly for woodland, heathland, river valleys and inter-tidal zone To preserve the historic environment for future generations To gain a greater understanding of archaeological remains in woodland areas 		
Indicator(s):		
<ul style="list-style-type: none"> % of area covered by Historic Environment Liaison Officers Additions to the Historic Environment Record % coverage of woodland area surveyed 		