



**Dorset
Council**

Wildlife and Countryside Act 1981

**Dorset Council
County of Dorset Definitive Map and Statement of Rights of Way**

**Dorset Council (Bridleway 8 (part), Cheselbourne and Bridleway 18, Dewlish
to be upgraded to Byways Open to All Traffic)
Definitive Map and Statement Modification Order 2020**

This Order is made by Dorset Council under section 53(2)(b) of the Wildlife and Countryside Act 1981 ("the Act") because it appears to that authority that the County of Dorset Definitive Map and Statement require modification in consequence of the occurrence of an event specified in section 53(3)(c)(ii) namely, that a highway shown in the map and statement as a highway of a particular description ought to be there shown as a highway of a different description and section 53(3)(c)(iii) namely, that any other particulars contained in the map and statement require modification.

The authority have consulted with every local authority whose area includes the land to which the Order relates. Dorset Council hereby order that:

1. For the purposes of this Order the relevant date is 29 January 2020.
2. The County of Dorset Definitive Map and Statement shall be modified as described in Part I and Part II of the Schedule and shown on the map attached to the Order.
3. This Order shall take effect on the date it is confirmed and may be cited as the "Dorset Council (Bridleway 8 (part), Cheselbourne and Bridleway 18, Dewlish to be upgraded to Byways Open to All Traffic) Definitive Map and Statement Modification Order 2020".

Dated this *06* day of *MARCH* 2020

THE COMMON SEAL OF
DORSET COUNCIL
was fixed in the presence of:-

Steve Evans



Authorised Signatory

SCHEDULE

(The points specified relate to the map attached to the Order and their positions are identified by national grid references)

Part I

Modification of definitive map Description of ways to be upgraded

Bridleway 18, Dewlish:

(To be numbered ~~Byway~~ 18, Dewlish)

- RESTRICTED**
- E – D The full width of the way from its junction with the county road at Chebbard Gate at point E (SY 76349842), west along an earth/grass surfaced track, following the parish boundary, to its junction with Bridleway 8, Cheselbourne (part proposed to be upgraded) at the Cheselbourne parish boundary at point D (SY 75009859). The width varies between 6 and 8 metres.

Part of Bridleway 8, Cheselbourne:

(To be numbered ~~Byway~~ 28, Cheselbourne)

- RESTRICTED**
- D – C – B – A The full width of the way from its junction with the current route of Bridleway 18, Dewlish (proposed to be upgraded) at the Dewlish parish boundary at point D (SY 75009859), west along an earth/grass surfaced track, following the parish boundary to its junction with Bridleway 23, Dewlish at point C (SY 74449847), then north west and west to point B (SY 74109850) and continuing west south west to its junction with Restricted Byway 4, Piddlehinton at the Piddlehinton parish boundary, on the eastern side of Doles Hill Plantation at point A (SY 73939842). Width: 9.14 metres (30 feet as indicated in the Cheselbourne Inclosure Award 1819).

Part II

Modification of definitive statement Variation of particulars of ways

Bridleway 18, Dewlish:

Delete:

From: 763984

To: 750985

Road north of Chebbard Farm westwards to Cheselbourne parish boundary.

RESTRICTED Byway ~~Open to All Traffic~~ 18, Dewlish:

Add:

From: SY 76349842

To: SY 75009859

The full width of the way from its junction with the county road at Chebbard Gate, west along an earth/grass surfaced track, following the parish boundary, to its junction with Bridleway 8, Cheselbourne and Byway 28, Cheselbourne at the Cheselbourne parish boundary. The width varies between 6 and 8 metres.

Bridleway 8, Cheselbourne:

Delete:

From: 765993 To: 739984

Road opposite Callway Lane width 25 feet between GR 765993-750985 to Piddlehinton parish boundary at Dole's Hill Plantation.

Add:

From: SY 765993 To: SY 75009859

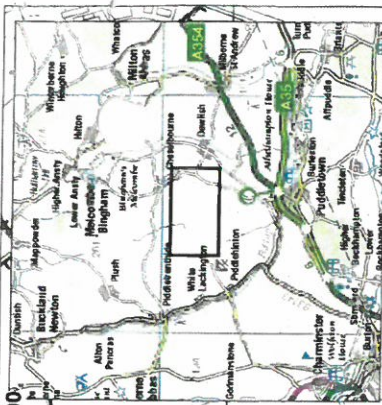
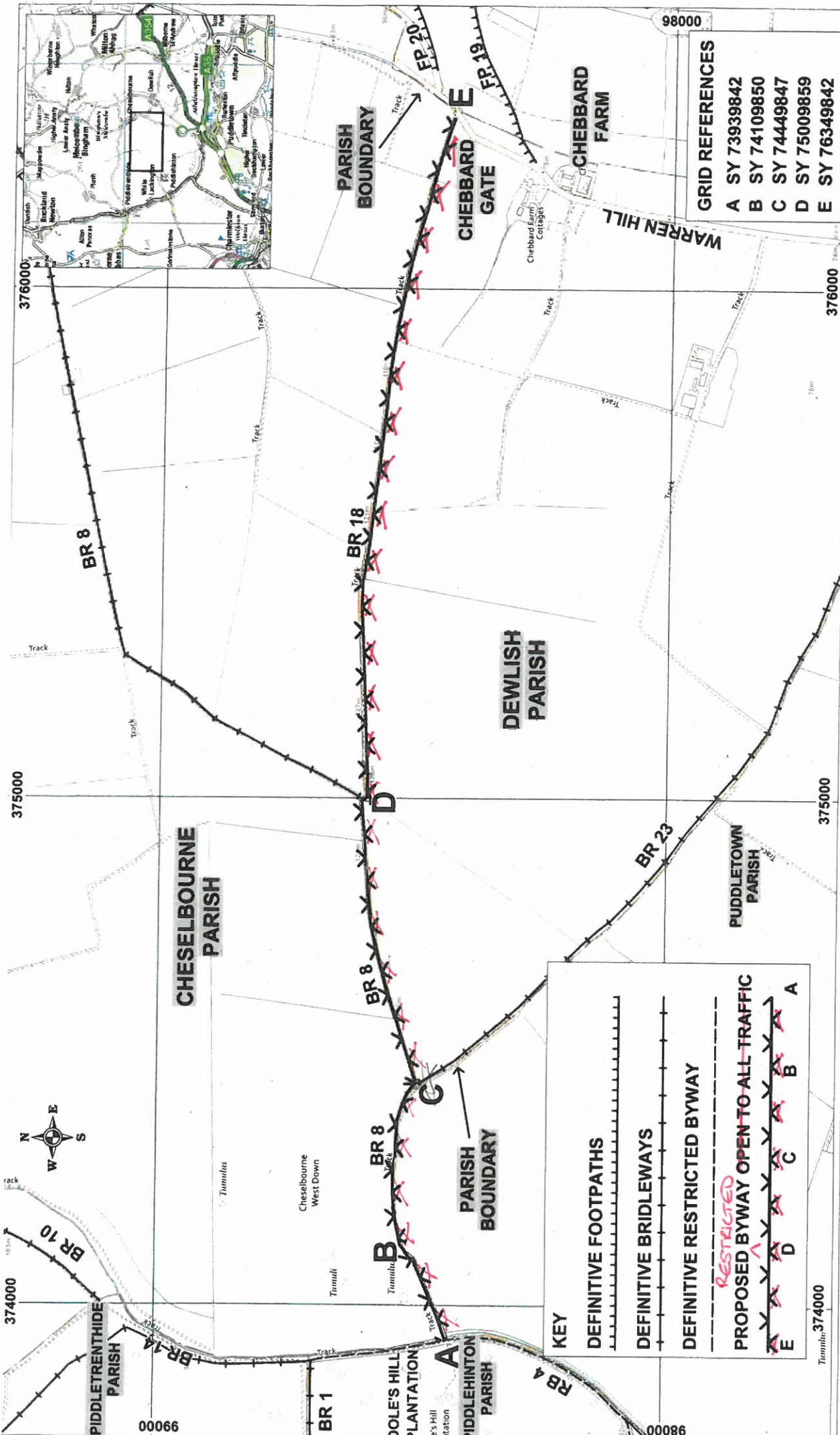
Road opposite Callway Lane width 25 feet between GR 765993-750985 to its junction with Byway 28, Cheselbourne and Byway 18, Dewlish at the Dewlish parish boundary.

~~RESTRICTED~~ Byway ~~Open to All Traffic~~ 28, Cheselbourne:

Add:

From: SY 75009859 To: SY 73939842

The full width of the way from its junction with Bridleway 8, Cheselbourne and Byway 18, Dewlish at the Dewlish parish boundary, west along an earth/grass surfaced track, following the parish boundary to its junction with Bridleway 23, Dewlish at SY 74449847, then north west and west to SY 74109850 and continuing west south west to its junction with Restricted Byway 4, Piddlehinton at the Piddlehinton parish boundary, on the eastern side of Dole's Hill Plantation. Width: 9.14 metres (30 feet as indicated in the Cheselbourne Inclosure Award 1819).



GRID REFERENCES

A	SY 73939842
B	SY 74109850
C	SY 74449847
D	SY 75009859
E	SY 76349842

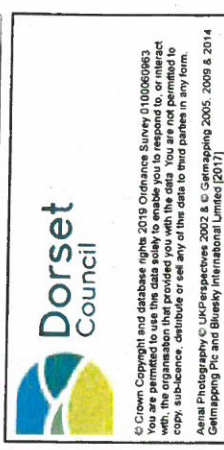
KEY

- DEFINITIVE FOOTPATHS (dashed line)
- DEFINITIVE BRIDLEWAYS (line with vertical dashes)
- DEFINITIVE RESTRICTED BYWAY (line with horizontal dashes)
- PROPOSED BYWAY OPEN TO ALL TRAFFIC (line with 'X' markers)

RESTRICTED (written in red above the last item)

Legend for road types: A, B, C, D, E (represented by different line styles and 'X' markers)

Ref: 18/11/1
 Date: 18/07/2018
 Scale 1:10000
 Drawn By: AH
 Cent X: 375145
 Cent Y: 98480



DORSET COUNCIL (BRIDLEWAY 8 (PART), CHESELBOURNE AND BRIDLEWAY 18, DEWLISH TO BE UPGRADED TO BYWAYS OPEN TO ALL TRAFFIC) DEFINITIVE MAP AND STATEMENT MODIFICATION ORDER 2020

Handwritten signature: G. Evans

RESTRICTED (written in red)