



POOLE HARBOUR'S BIRD AND RECREATION INITIATIVE

ANNUAL REPORT 2022 / 2023

Contents

1. Introduction
2. Background
 - 2.1. Structure and governance of BARI
 - 2.2. The Recreation Zone
 - 2.3. Work areas
3. Plans and Strategies
 - 3.1. The Poole Harbour Supplementary Planning Document (SPD) 2019- 2024
 - 3.2. Poole Harbour disturbance study. 2019. Footprint Ecology
 - 3.3. Poole Harbour Aquatic Management Plan 2006 (Amended 2011)
 - 3.4. Natural England, Site Improvement Plan. Natura 2000
 - 3.5. BARI monitoring, projects and implementation plan 2023
4. Finance
 - 4.1. Eligibility
 - 4.2. Budget
5. Engagement and awareness raising
 - 5.1. Coastal Engagement Warden
 - 5.2. Dorset Dogs partnership
 - 5.3. Wildlife Friendly Watersports sessions
 - 5.4. Signage: NHYC, Don't chase the birds, Paddle power map, Keep off the saltmarsh, chain ferry, RNLI presentation
 - 5.5. Paddle Power Map
 - 5.6. Communications: Website, illustrations, EA Film, BARI Film
 - 5.7. 3 month BARI internship
6. Infrastructure projects (delivered / in progress)
 - 6.1. Rock Lea View
 - 6.2. Lake Pier launch site improvement – BCP
7. Future Project Planning and updates 2022/23
 - 7.1. Context and Aims
 - 7.2. Studland Footpath improvement project – National Trust
 - 7.3. Holes bay dog fence – Upton country park
 - 7.4. Turlin moor Saltmarsh zoning BCP and DWT
 - 7.5. Paddlers map fixed signage
 - 7.6. Electric van
8. Appendix
 - 8.1. Terms of Reference



1. Introduction

The Local Planning authorities are working in partnership to deliver the Poole harbour recreation mitigation. [The Poole Harbour Supplementary Planning Document \(SPD\) 2019- 2024](#) was prepared and adopted jointly between BCP and Dorset Councils and is advised by Natural England. Further information regarding the SPD is available on the [Dorset Council website](#).

2. Background

Under the SPD the Local Planning Authorities collect developer contributions from development within 5kms of Poole Harbour Special Protected Area (SPA) sites. These contributions are used to fund Poole Harbour recreation mitigation in the form of Strategic Access Management and Monitoring (SAMM) and Poole Harbour Infrastructure Projects (PHIPs).

In December 2020 a Seasonal Mitigation Warden was appointed, followed shortly by the mitigation coordinator in January 2021. Subsequently in July 2021 the brand identity of Poole Harbour's Bird And Recreation Initiative (BARI) was established.

2.1 Structure and governance of Poole Harbour's Bird And Recreation Initiative (BARI)

Staff structure

The Urban Heath Partnership team leader manages the Mitigation Coordinator. The Mitigation Coordinator line manages the Coastal Engagement warden and a part time seasonal Dorset Dogs warden.



Governance

The BARI team are employees of Dorset Council and managed by Urban Heath Partnership. The Steering group that advises and supports the initiative is made up of representatives from:

- BCP Planning
- BCP Environment team
- BCP CIL planning and finance
- Dorset Council Planning
- Dorset Council Environment Team
- Dorset Council CIL planning and finance
- Natural England Marine Advice Team Lead
- UHP Team Leader

An agreed Terms of Reference governs the group (appendix 8.1)

3. Poole Harbour's Bird and Recreation Initiative Annual Report 2022 / 2023

2.2 The Recreation Zone

Poole Harbour mitigation is delivered within a specified recreation zone (Figure 1)

Delivery is split between the current Local Authority Areas 85% BCP and 15% Dorset Council.

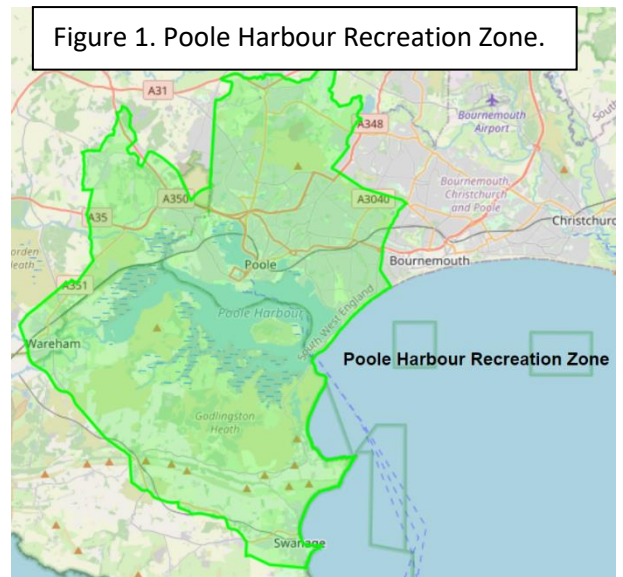
2.3 Work areas

Coordination and Management

The key elements of coordination and management include

- Developing and delivering projects with stakeholders (PHIP and SAMM)
- Developing and delivering key messaging (SAMM)
- Managing the delivery of SAMM through wardening, social media and strategic engagement
- Monitoring and reporting the results of mitigation projects

The wardening element of SAMM is delivered and funded by the Local Planning Authorities along with PHIPs. More detail on PHIP and SAMM delivery in sections 5 and 6.



3. Plans and Strategies

- 3.1. [The Poole Harbour Supplementary Planning Document \(SPD\) 2019- 2024](#)
- 3.2. Poole Harbour disturbance study. 2019. Footprint Ecology
- 3.3. [Poole Harbour Aquatic Management Plan 2006 \(Amended 2011\)](#)
- 3.4. [Natural England, Site Improvement Plan. Natura 2000](#)
- 3.5. BARI Monitoring, Projects and Implementation plan 2023 (See Appendix 8.2)

4. Finance

Dorset Council will collect SAMMs contributions through CIL and BCP Council collects the SAMMs through planning obligations. The budget is split between the two Unitary Councils from developer contributions collected from development within 5Km of Poole Harbour SPA sites. Dorset Council contribute 15% plus hosting costs and BCP Council contribute 85%. BARI applies for project funding via proforma and matrix scoring that is then evaluated by the steering group. Final approval is secured through the BCP infrastructure improvement board and Dorset Council senior management via infrastructure and delivery planning manager. Stakeholders are encouraged to make applications for funding through BARI for their own projects. Both go through a rigorous process to ensure that they prove good value and achieve high standards of mitigation.

4.1. Eligibility

Internal and external applications must meet the criteria set out in the pre-application form. This ensures that:

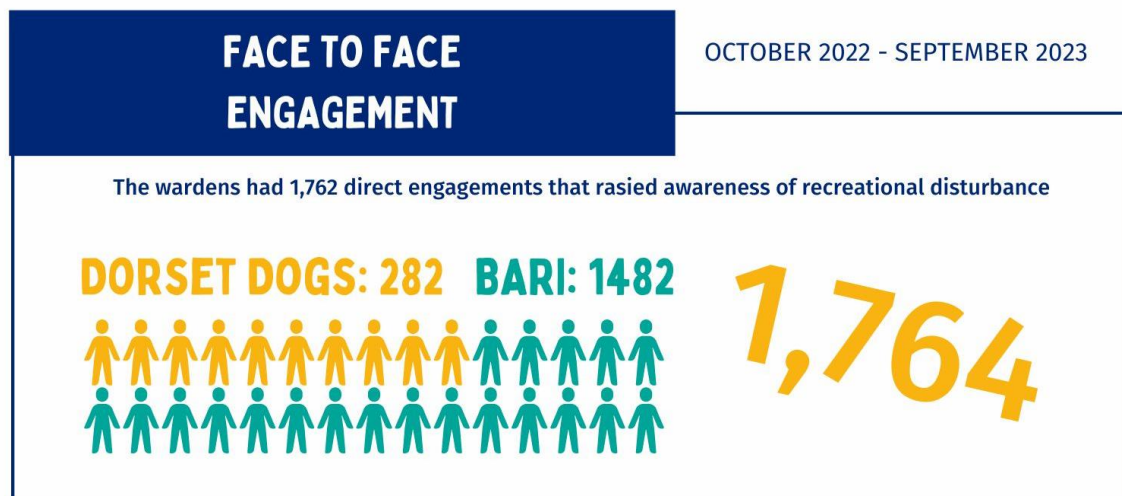
- Projects are within the Recreation Zone as stated in the SPD

- Manages impacts on waders and wildfowl from recreational disturbance
- Contributes towards improving our understanding of the impacts of this adverse effect either directly (monitoring and surveying) or indirectly (monitoring the success of the project outcomes).
- Meets one or more of the strategic objectives as laid out in the Natural England Site Improvement Plan.

4.2. Budget

Project cost	Amount
Studland ferry sign DD	£648
Website	I think will be in present financial year?
Paddle power map	£1,064
Lake Pier Improvement project	£35,641
Lytchett Project	£17,780
<i>Coastal Engagement Warden 23 month contract (Cost for 22-23 financial year)</i>	£22,819
<i>Dorset Dogs Engagement Warden</i>	£12,039
<i>Co-ordinator role plus associated core costs</i>	£56,044
<i>Small resources budget</i>	£5,000
Total	£151,035

5. Engagement and Awareness Raising



5.1 Coastal Engagement Warden

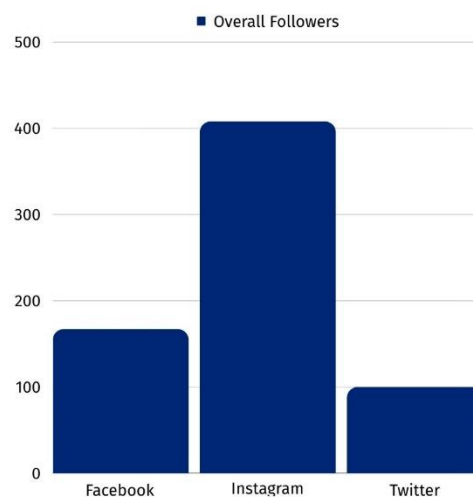
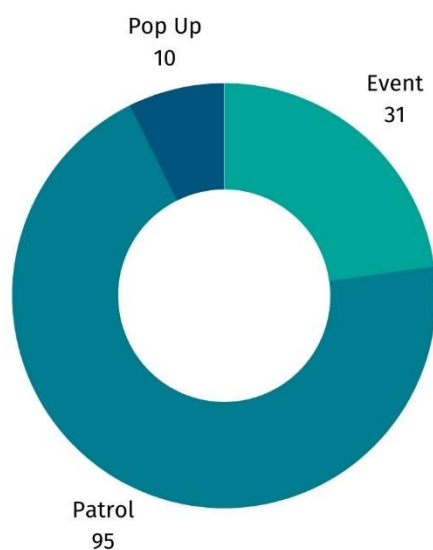
See appendix 8.3. for end of season report October 2022 – March 2023

A full time warden has been appointed for 23 months (July 22 –June 2024). This role delivers a programme of positive engagement activities and events to promote ‘wildlife friendly recreation’ with a focus on overwintering SPA bird species across 32 sites included in the Poole Harbour Recreation Zone. Targeting Poole Harbour residents and recreational user groups by patrolling, running outreach activities (e.g free guided bird walks) pop-up stalls and attending stakeholder events (Upton Country Park family events). The role also involves the management of social media channels Instagram, Twitter and Facebook.

A new migration game was developed and binocular craft activity for kids which proved very successful and engaged children with being a birder and building empathy of what it’s like to be a bird on migration!

Followers and interactions have increased and Facebook has been developed to engage the community groups such as watersports groups with the paddlers map with great success.

The Coastal Engagement warden has directly engaged with 1,482 people between October 2022 – September 2023.



Facebook

- Reach – 31,637
- Follower increase – 41

Instagram

- Reach – 1,134
- Follower increase – 76

Twitter

- Reach – 8,931
- Follower increase – 23

5.2 Dorset Dogs Warden

Full warden report October 2022 – March 2023 see appendix 8.4

The 2022/23 season trialled a 2 day a week post. Continuing the previous winters partnership with Dorset Dogs to work alongside the Coastal Engagement Warden. 282 people were directly engaged with via Patrols and Pit stop events.



The warden promotes the Coastwise Canines campaign and delivers on site engagement to champion positive behaviour for people with dogs on the coast and promote

responsible dog ownership. The warden worked across Poole Harbour engaging site visitors, dog owners, local communities and land managers.

Dorset Dogs undertook the following:

- Planning and liaison with land managers
- Observing visitor behaviour, birds and disturbance by dogs
- delivering key messages for Doggy Do Code.
- Attending and organising events, on site public engagement to raise awareness of pro wildlife dog walking
- Using social media to promote the Dorset Dogs key messages

Focus sites include: Harbourside Park (Whitecliff Recreation Ground and Baiter Park), Hamworthy Park, Ham Common, Lake Pier, Studland inner and outer harbour- Bramble Bush, Brands Bay and Shell Bay and Upton Country Park and Frenches Farm SANG.



5.3 Wildlife Friendly Watersports sessions

These are targeted sessions aimed at watersports professionals offering to grow their 'green credentials' and offer their customers wildlife knowledge about the harbour. The aim is that they share this information with their customers and enable us to reach audiences that we wouldn't be able to target as easily, but also, by default, to teach the watersports organisations about the SPA features and disturbance impacts. Experienced watersports enthusiasts are more likely to go out in the winter months so this ensures that we also deliver the message to those people.



The free sessions are hosted at their favoured launch site and with site specific information about the species and habitats that they will come across and how to avoid disturbing them, with a particular focus on the type of watersports they provide e.g kite surfing, paddleboarding or kayaking.

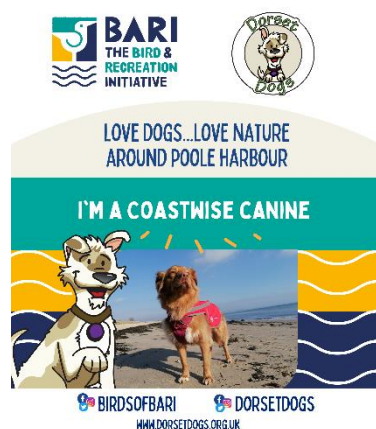
6 sessions have been booked for 2023. 4 of which were delivered this summer and 2 to be delivered in November 2023. Currently 35 watersports instructors have attended the training with another 20 booked in November.



(left to right: Rockley watersports, Brenscombe watersports, Posidon watersports)

5.4 Signage

The Dorset Dog partnership sign situated on the Sandbanks chain ferry and the 'don't chase the birds' signs have been updated.



North Haven Yacht Club (NHYC)

NHYC came to us in need of a sign to communicate the SPA features. They had been required to under planning requirements for the extension of their jetty and so weren't engaged with the sign in our initial meeting, however by the time we had developed the sign and engaged them with the SPA features they were very happy with the sign and have got 2 up in the entrance of the club and at the jetty.



Hamworthy Park

Working with BCP's Environmental promotions officer we contributed to this sign in Hamworthy park that promotes bird species and coastwise canines. Which is now installed at the entrance to the park.



5.5 Paddle Power Map

This is an update of the Poole Harbour kayak map in response to the growing number of stand up paddleboards (SUP) causing disturbance around the harbour. We facilitated a workshop inviting the land managers (DWT, RSPB, National Trust, BCP) and reps from the watersports community from the hotspot areas (Land and Wave, Rockley watersports, the watersports academy, Poole harbour canoe club). The aim of this workshop was to agree where it is safe and appropriate launch and landing areas for paddlers and to agree key points that should be included in the map.

The workshop delegates were then included in the development of the paddle power map. The name 'paddle power' was chosen to future proof any new and unforeseen paddle sports that will come onto the market.

Nearly 500 paper copies have been distributed since launching in July 2023 to members of the public, local shops and watersports organisations, and around 17,000 people have been reached via social media. We're absolutely thrilled with the reception the map has had and that one watersports professional called it 'an essential resource for anyone planning to "ride" the waves' and paddle sports groups are now sharing this amongst themselves to new comers in their groups.

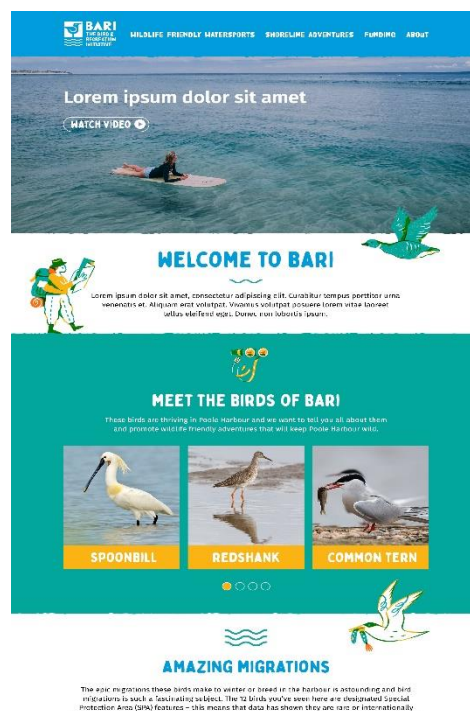


5.6 Communications

- **Website**

The website www.birdsofbari.org.uk will launch in November 2023. We secured funding for a set of 12 illustrations and for the website design.

The illustrations celebrate SPA species, habitats and targeted recreational user groups (SUP, Dog walkers and nature watchers).



- **Environment Agency Film.** We contributed to the Environment Agency film on water quality in the harbour speaking about the SPA species and habitats and the increasingly negative impacts they face from both recreation and nitrates. [\(278\) Restoring the water quality and ecology of Poole Harbour – Background and summary actions Part 1 - YouTube](#)
- **BARI Film:** Working with BCP videographer we have produced a film to introduce BARI's work. This will sit on the website and will be edited into 30 second bites for social media. We interviewed Birds of Poole Harbour at Rock Lea View, and Land and Wave instructor at their office to showcase our partnership work [\(278\) Introduction to the Bird and Recreation Initiative - YouTube](#)

5.7. Kingston Maurward Internship

The coastal engagement warden managed a 3-month intern between July – September from Kingston Maurward. The placement was a 1st year countryside management student who assisted with the development of a new engagement activity called the Hungry Beak game which gets participants to forage in the sand for molluscs, shrimp and worms highlighting the diversity of beaks, foraging styles, and food that the birds eat. They assisted at events helping set up the stalls and pop ups and on patrols. It was a successful placement and they left having learnt a lot and inspired for a career in nature engagement.

6 Infrastructure Projects

6.1 Rock Lea View

Rock Lea view offers a disability access path and viewpoint mirroring that created in 2015 at Lytchett Bay View at the eastern end of Lytchett Bay. This project created an accessible path and bird viewing platform, Interpretation about SPA features, installed a kissing gate, culverting a ditch, installing 2 x end posts for 12ft gap, removed the derelict fence and replaced with stock fencing.

The wide ditch that was dug out prevents access to the shoreline and thereby mitigates recreational disturbance to the many waders and waterfowl which use Lytchett Bay. Wessex Water and RSPB contributed funding and resources to the project.

The viewpoint has been welcomed by locals and is regularly used. The afternoon light provides great opportunities to see many species and the spectacle changes on each tide and throughout the year. The RSPB and BARI wardens use it to engage with visitors to discuss the value of local nature on the urban fringe and its susceptibility to disturbance. The reedbed and saltmarsh beyond the viewpoint are now zoned off and protected.



6.2 Lake Pier launch site improvement project.

The largest infrastructure project we have delivered to date.

Improving and promoting this as a key launch area we aim to consolidate access from the beach and take traffic off more sensitive areas along this beachline, preventing disturbance at Arne and Lytchett Bay.

The signage on site was cluttered and outdated making this feel like an uncared for space and thus easy to dismiss as 'unimportant'. Working with BCP Council's Greenspace Development Team and Flood & Coastal Erosion Risk Management team we redeveloped the area using local and recycled materials, to make the space feel special for visitors. Communicating water safety, site information, the paddle power map and BARI messaging alongside beautiful bird and recreation metal sculptures fixed to recycled groyne timber structures and Purbeck stone seating area for people to appreciate the views.

By improving the launch area it will attract more people to launch from this site rather than the unofficial and more sensitive sites nearby such as Holes Bay and Lytchett bay. The Paddlers map installed at the launch area will give people direct information about where they can and can't paddle in the harbour as point of access and the interpretation will explain the reasons why

recreation must be sensitive to nature. This will mitigate many unofficial landings on Arne and other bird sensitive areas particularly up the Wareham Channel.

The interpretation will educate visitors as to the high conservation value of the site and this could encourage a better appreciation of the site and code of conduct for on site behaviour.

Will be completed by November 2023.

Cpt Brian Murphey (Poole Harbour Commissioner) welcomes this improvement for its safety benefits, stating that by encouraging people to launch at this end of the harbour it will minimise the risk of them coming into contact with commercial vessels in the harbour.



(Lake pier Left to right: kayaker using the newly resurfaced launch area, the interpretation board looking out to Arne, the launch surface with handrail, the paddlers map fixed sign, the seating and groynes)

7 Current Project Planning and updates 2022 / 23

7.1 Context and Aims

Stakeholder mitigation projects are worked up in partnership, the aim is for the Initiative to support and match fund projects that applicants may not have been able to achieve without this extra financial support. The Coordinator works with these applicants to develop successful projects.

Some projects are lead by BARI and developed in partnership with the land managers. This occurs when a priority and need has been identified and no existing plan is in place.

7.2 Studland Footpath Improvement and zoning

Application to be submitted in November 2023.

The aim of this project is to upgrade the Northern boundary track to enable a circular walk route that avoids Brand's Bay. To install signage and interpretation to raise awareness of bird sensitive zones, discourage people from walking with dogs south of Jerry's Point, and to promote and interpret the new route. Plus we will work together to deliver visitor engagement and wardening staff and volunteers from National Trust, BARI and Dorset Dogs during the seasonal zoning.

With growing concerns about the impacts of recreational disturbance on wetland birds in The extremely sensitive intertidal zones on the Western edge of the peninsula and the Footprint Ecology Poole Harbour Disturbance Study 2019-20 identifying a significant increase in recreational dog walking as a principal threat to bird populations within the harbour, particularly overwintering birds, the National Trust have been attempting to influence the behaviour of dogwalkers visiting the site, to reduce this disturbance impact.

In 2019 a pilot 'heathland ambassadors' programme was established, with several local dogwalkers trained as volunteers to engage with other dogwalkers and explain the importance of keeping dogs on leads, and separate engagement days were run by National Trust staff from Brand's Bay hide. Although the work was curtailed with the Covid pandemic, the programme gave valuable insight into the issue and identified some key priorities to address for significant changes in dogwalker behaviour to occur:

- Information and signage were needed to inform visitors of the importance of Brand's Bay for birds and the impacts of dogs, suggesting alternative routes and encouraging owners to keep dogs on leads.
- An attractive alternative route was needed, ideally one that allowed walkers to still enjoy at least some of the Poole Harbour shoreline, but which diverted walkers away from the more sensitive southern end of the bay.
- Ongoing face-to-face engagement was needed to continue to raise awareness and promote behavioural change and more responsible dog-management.

This will be our largest infrastructure project to date, delivering mitigation in an extremely sensitive part of the harbour where large numbers of birds feed and roost. The total project budget is £156,000 and they will be requesting £76,000 from the Poole Harbour mitigation fund to enable them to deliver this improvement.

7.3 Holes Bay dog fencing

To be submitted in October 2023.

This is a small project with a big benefit! 350 metres of clipex fencing will be installed along the boundary between the Holes Bay and the park.

Upton Country Park is used by 650,000 people a year, including cyclists, dog walkers and families. As members of the public enjoy the views across Holes Bay, some feel that they want to go out and experience the Bay. This causes damage to the habitats and disturbance of the Shoreline bird populations. To prevent this damage and disturbance, it is proposed to install a fence along the shoreline from the Bird Hide to the existing Holes Bay bridge. The design will have a pedestrian gate at both ends to allow for maintenance as well as sections that will allow for mammal and bird trails. The fence will sit on the shoreward side of the shoreline vegetation reducing the visual impact on the Upton Country Park visitors. At some places where it is visible, the fence will have some interpretation.

7.4 Turlin moor saltmarsh protection

Working with BCP senior ranger and Lytchett Bay partnership we have been exploring ways to zone a particularly sensitive area of saltmarsh within Lytchett Bay on the Turlin moor boundary.

Previously a Redshank breeding site and currently a high tide roost for a small number of SPA species, this saltmarsh is infrequently accessed by dog walkers and anglers causing large amounts of disturbance to species that use it. Quotes from contractors are being gathered, to zone it with a trench as well as exploring simpler alternatives as cordoning it off with simple interpretation.

Alongside this we have started to build links within the community working in partnership with Dorset Wildlife Trust's Wilder communities officer. We aim to deliver workshops and engagement activities within this community as part of the interpretation around the saltmarsh zoning.

This application will be submitted in January 2023.

7.5 Paddlers map fixed signage

The second phase of the Paddle Power map project is to install fixed signage at each launch point on the map. We have secured landowner permission from BCP and National Trust for 7 launch points and 2 landing sites so far. One sign is already on site at lake Pier as part of the improvement project there.

The aim is to submit an application for the signage costs by February 2024 and to have landowners contribute in kind by having them manufactured within their design specifications and installing them.

7.6 Electric Van purchase

A vehicle is an essential resource for the warden to deliver effective engagement as it is used for the extensive travel requirements for patrols and storing and transporting equipment required for pop-

ups and events. We are looking to have this vehicle wrapped so that key messaging can be on the van and promote the project aims.

This proforma was submitted in August and approved in September 2023. The purchase of the E van will proceed once a MEV Electric vehicle is tested as requested by DC fleet services.

8 Appendix

8.1 Terms of Reference



Recreation Mitigation Steering Group Terms of Reference under the Poole Harbour Recreation 2019-24 Supplementary Planning Document January 2021

Introduction

These terms of reference detail the governance and operation of the Recreation Mitigation Steering Group, the group overseeing delivery of recreation mitigation as detailed in the Poole Harbour Recreation 2019-24 Supplementary Planning Document (SPD). A Recreation Mitigation Co-ordinator and Seasonal Warden will report to and be supported by this Steering Group.

The SPD was adopted by Dorset Council (DC) and Bournemouth, Christchurch and Poole Council (BCP) in April 2020, and sets out the need for recreation mitigation for residential and tourist development within a 'Poole Harbour Recreation Zone'. Residential and tourist development in this zone is likely to have a significant effect on Poole Harbour SPA and Ramsar. The mitigation will address the impacts of additional visitors to the Harbour that arise from this development and the any resulting disturbance to protected birds. The SPD also sets out how mitigation will be funded.

Geographical Extent

17. Poole Harbour's Bird and Recreation Initiative Annual Report 2022 / 2023

The Poole Harbour Special Protection Area and Recreation Zone are shown on the map (Map is an extract from the SPD).

The Poole Harbour Recreation Zone is the area where new residential and tourist development is considered to have a likely significant effect upon the SPA, based on visitor survey information gathered. This area (shown in purple) is the focus of the recreation mitigation work, which sits across both BCP and Dorset councils.

Not to scale

Purbeck Local Plan

Lytchett Matravers

Upton

Poole Local Plan

Poole

Sandford

Wareham

Corfe Castle

Swanage

POOLE HARBOUR SPECIAL PROTECTION AREA

POOLE HARBOUR RECREATION ZONE

Local Plan Areas

© Crown copyright and database rights 2019
Ordnance Survey LA100022058

Poole Harbour Special Protection Area and Poole Harbour Recreation Zone

Purpose of the Recreation Mitigation Co-Ordinator Steering Group

The Steering Group has the key role of overseeing the delivery of Recreation Mitigation in Poole Harbour, this will include:

- Share ideas and put forward suggestions for recreation mitigation delivery and projects for the Mitigation Coordinator to research and investigate
- Evaluate and recommend recreation mitigation projects through an agreed process.
- Oversee development and delivery of a work programme for the Recreation Mitigation Co-ordinator and Warden
- Define recreation mitigation targets and time frames
- Input and scrutinise the monitoring (including visitor numbers, visitor behaviour, bird numbers and bird disturbance) and evaluate progress and outcomes around delivery of recreation mitigation against mitigation targets
- Oversee production of an annual Mitigation Delivery Report, to inform annual SPD Monitoring Report produced by Unitary Authority Planning Officers
- Oversee a communications strategy

Operation of the Steering Group

Funding –The Councils will collect contributions through CIL, Section 111 agreements, or planning obligations to fund the mitigation. The Steering Group will ensure all monies are spent appropriately in a timely manner

New Members – New members may be invited, adopted or co-opted on to the Steering Group with the agreement of a majority of existing members. Membership reviewed annually.

Meetings and Attendance – The Recreation Mitigation Steering Group will meet at least four times a year, additional meetings may be arranged if necessary. The location of meetings will be virtual or will be at one of the Steering Group member's locations and will change regularly to ensure travel distances are taken into consideration.

Reporting Arrangements – Agendas and papers will be sent out a week in advance of meetings. Meeting minutes will be distributed to Steering Group members within two weeks following a meeting and all papers will be made available on request from the Recreation Mitigation Co-ordinator.

Recreation Mitigation Steering Group Membership

Dorset Council:

Planning: Steve Boyt

Implementation and Site Management: Bridget Betts

CIL and Planning Agreements Officer: Malcolm Davies

Bournemouth, Christchurch and Poole Council:

Planning: Steve Dring, Malcolm Hodges

Senior Planning and Policy Officer: Malcolm Hodges

Natural England:

Nick Squirrell

Emily Whiting

Urban Heaths Partnership:

Team Manager: Paul Attwell

Recreation Mitigation Co-ordinator: Ria Loveridge

Recreation Mitigation Co-ordinator Responsibilities

The Recreation Mitigation Co-Ordinator will:

- Co-ordinate and deliver an agreed partnership programme for the mitigation required under the SPD including education, Strategic Access Management and Monitoring (SAMM) and Poole Harbour Infrastructure Projects (PHIPs)
- Monitor delivery of mitigation against mitigation targets
- Identify supplementary funding opportunities to link with this work
- Facilitate Recreation Mitigation Steering Group meetings
- Provide an officer report twice yearly to the Recreation Mitigation Steering Group
- Support the two councils planning departments by providing technical information relating to the SPD as required at Local Plan examinations, planning enquiries etc.
- Line Manage Poole Harbour Recreation Mitigation Warden including developing their work programmes
- Manage any other mitigation staff and volunteers and any contracts relating to this work
- Provide relevant reports/information to partners
- Facilitate wider Stakeholder meetings



8.2 BARI Monitoring,
Projects and Impleme



8.3 CEW.End of season
report 2022 (003).pdf



8.4 BARI DD Warden
Report 2022 2023.pdf