



Dorset
Council



Dorset Library Strategy

Our plans for 2023-2033

Introduction

This strategy is about:

- the library services we have now
- what we want to achieve
- our plans



We have listened to what local people want and need:

- **12,500** people filled in surveys
- we ran **21** workshops
- we interviewed **40** people who do not use libraries



Dorset Council



Dorset Council runs services for local people, including:

- libraries



- recycling and waste collection



- care and support for adults, children and families



- education and training

- housing

Our libraries



There are 31 libraries in the Dorset Council area.



- **23** libraries are run by Dorset Council
- **8** libraries are run by volunteers

Examples of library services:

Books

We lend books, audio books and large print books to people for free.



Events and activities

Libraries run events for people of all ages.





Support from library staff

Our staff and volunteers can help you to find the information you need.



Computers and free WiFi

You can use our computers, free WiFi, printers and scanners.



Room hire and work space

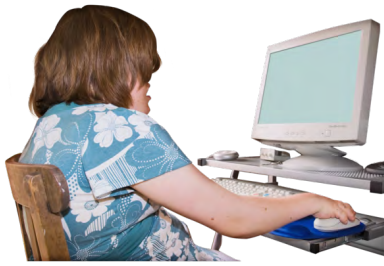
Libraries have space to study or work. Some libraries have rooms for hire.



Home Library Service

If you are unable to leave your home, we may be able to bring books to you. Contact us to find out more.

Digital Support



Library staff help people to use computers. There are drop-in sessions and a Digital Hotline.



We help people to:

- get online
- apply for jobs and benefits
- find information about other local services
- learn new skills
- keep in touch with family and friends



Customer Service Support



Library staff help people to find information about other local services.



You can:

- get information about Dorset Council's services
- get a referral to Citizen's Advice
- find learning opportunities
- find out about business support
- learn about ways to help the environment and stop climate change



Activities and events



Activities and events at the library help you to make friends, learn new things, and have fun.



For example:

- lego club and rhyme time

- reading groups



- computer coding clubs

- support groups



- craft clubs



E-services

You can use e-services at any time, from anywhere.



Use our e-services on your computer, tablet or smartphone.

E-services include:

- our website
- e-books and e-audio books
- e-newspapers and e-magazines



If you have not used our e-services before, library staff can help.

Our vision

Our libraries will help people to learn, grow and meet each other.

People will always have a place to:

- feel welcome
- read for learning and fun
- get online
- meet people

Everyone will know:

- what local libraries have to offer
- when they are open
- how to get involved with their local library



Library



Our aims

We want our libraries to **inspire**, **connect** and **enable** people.



Inspire

People of all ages can access information, learning and culture.



Connect

Everybody has the local library services they want and need.

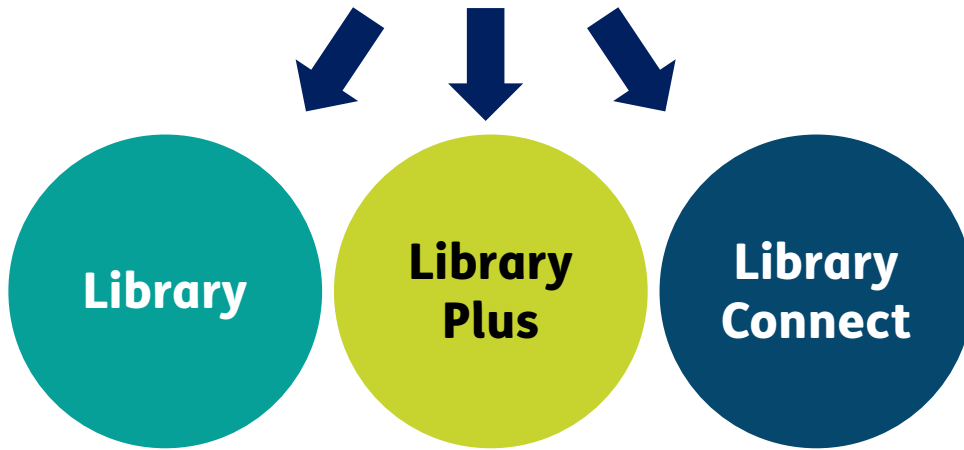


Enable

Libraries are accessible, safe and welcoming - for visitors, staff and volunteers.

Our plan

There will be 3 types of library:



Library

Open 18 hours per week

Trained staff and volunteers will run all the standard library services.

Books, activities, computers, wifi, printing, digital support, e-services.

- Beaminster
- Corfe Mullen
- Crossways
- Lyme Regis
- Lytchett Matravers
- Sturminster Newton
- Upton
- Verwood
- West Moors
- Wyke Regis



Library Plus

Open 30 hours per week



All standard library services, plus a bigger range of events and activities.

- Gillingham
- Littlemoor
- Portland
- Shaftesbury
- Sherborne
- Swanage
- Wareham
- Wimborne

Library Connect

Open 42 hours per week



All standard library services, a bigger range of events and activities, plus adult learning and more space to work.

- Blandford
- Bridport
- Dorchester
- Ferndown
- Weymouth

Opening Times



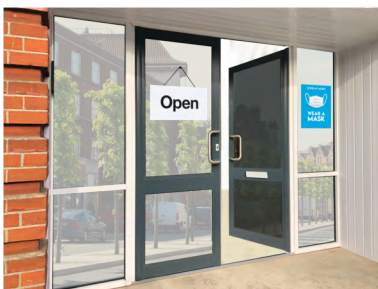
In each of our 3 local areas, there will always be an open library during these hours:

- **Monday to Friday:** 10am - 6pm
- **Saturdays** 10am - 4pm



Local people and organisations can work with us to:

- find, train and support volunteers



- increase the opening hours, if that is what local people want

What next?



The changes will happen from April 2024 to March 2025.

We will:



- find out whether the plans are working



- listen to any concerns
- work together to make our library services the best they can be!



Managers and Councillors will also make sure our plans are working well for local people.

Useful links

Find out more about your local library service:



Website:

www.dorsetcouncil.gov.uk/libraries

Phone: 01305 221000



Email:

dorsetlibraries@dorsetcouncil.gov.uk



Facebook:

<https://www.facebook.com/DorsetLibraries/>



Twitter / X:

<https://twitter.com/dorsetlibraries>



Instagram:

<https://www.instagram.com/dorsetlibraries/>