

## Christchurch Historic Urban Character Area 7

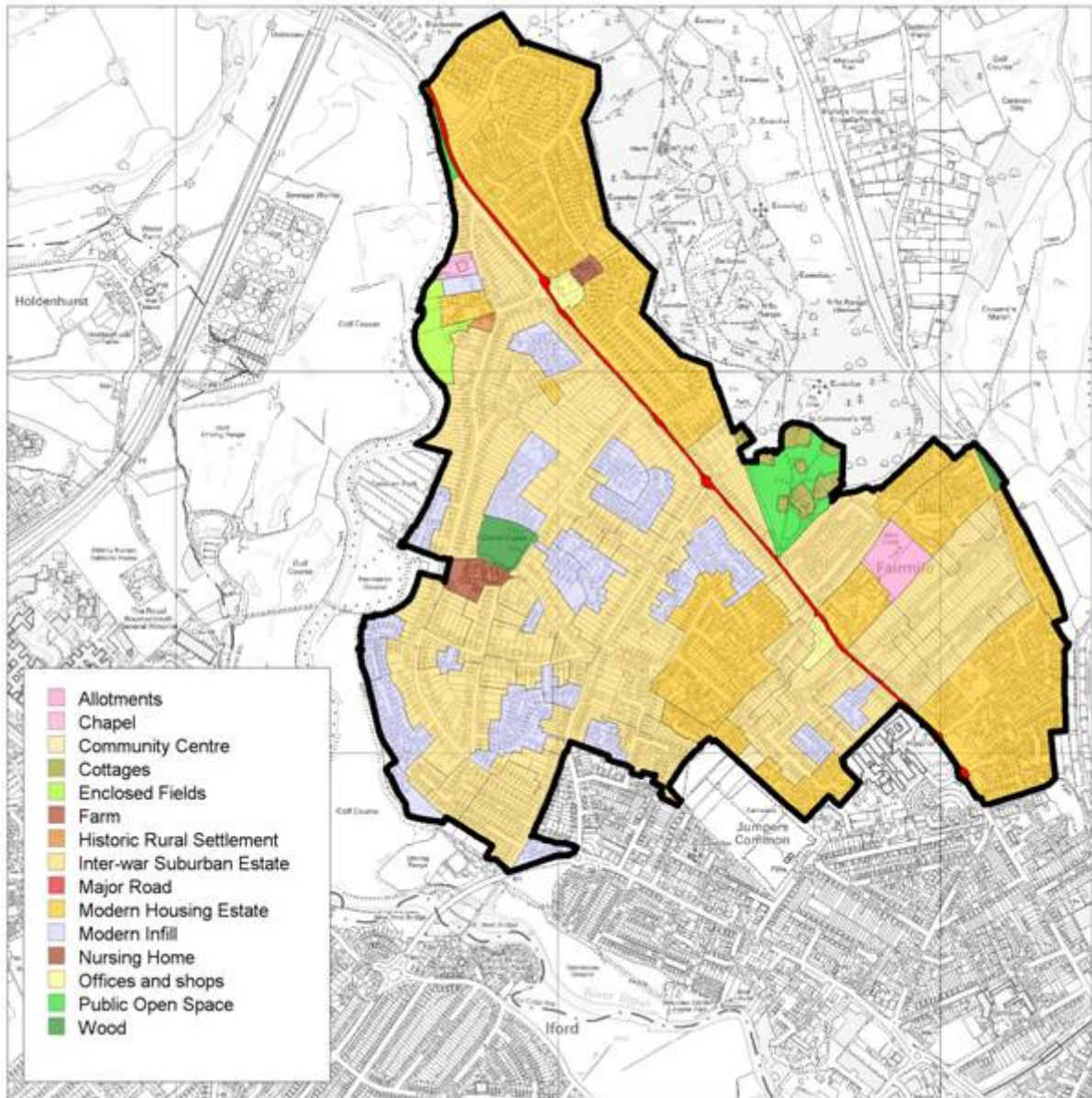


Figure 89: Map of Historic Urban Character Area 7, showing current historic urban character type.



Figure 90: St Catherine's Parade, Fairmile



Figure 91: Bosley Farm

**Christchurch Historic Urban Character Area 7**  
**Structure of Character Area**

**Overview**

This area represents suburban expansion to the north of Christchurch along the gravel ridge between the Rivers Stour and Avon. It consists largely of 20th century housing, but incorporates the farm at Bosley, the site of a probable Saxon settlement.

**Topography and Geology**

Hurn Road runs along the spine of the ridge between the Rivers Stour and Avon, and the Stour forms the western boundary of the character area. The geology of the area consists of Bracklesham Beds with a strip of alluvium along the western edge adjacent to the River Stour.

**Urban Structure**

This character area consists of large areas of inter-war and modern housing on both sides of Hurn Road. The historic settlement of Bosley was reached from Hurn Road along a track now followed by St Catherine's Way.

**Present Character**

Figure 89 shows the present day historic urban character types. Inter-War and Modern Housing Estates form the major part of this area with small areas of Allotments, Offices and Shops, and small pockets of Woodland and Open Space at the fringes of the area. The character area includes Bosley and some undeveloped or only recently developed meadow land alongside The Stour. These areas are distinct in character from the surrounding detached bungalows.

**Time Depth**

The manor of Bosley (*Borstealle*) is first mentioned in the Christchurch Cartulary circa AD 985. By Domesday it was referred to as the manor of *Bortel*. In the 17th century a large common was associated with Bosley, defined by the parish boundary on the north side, the River Stour and River Way on the west side and the line of Old Barn Road on the south side, extended onto St Catherine's Hill. By the turn of the 20th century Bosley Farm was reduced to a smallholding of c. 40 acres (Coleman, 1999; Page, 1912, 83-101). The extent of the former settlement site may be indicated by a pair of small enclosures visible on the 1st edition OS 6" map (OS 1st edition 25 inch sheet no. 86.3, 1870). The garden of Bosley Farm preserves the boundaries to one of these enclosures, the other has been eradicated by modern housing but may have been a village green.

**Settlement Pattern and Streetscape**

The settlement pattern is primarily one of low to medium density housing, arranged in typical suburban estate layouts. The inter-war areas have relatively straight roads with large detached houses set off the street in large plots. The modern housing has shorter and curvilinear roads, with smaller plots.

There are relatively large gardens in much of this area, providing a green space. There are areas of woodland and open spaces around the fringes of the area, particularly adjacent to the River Stour.

Christchurch Historic Urban Character Area 7  
**Built Character**

***Building types***

There are few historic buildings within the character area.

The modern public buildings have little local character and tend to be of simple block form with flat roofs.

***Building Materials***

The 18th century Bosley Farmhouse has a rendered façade and thatched roof. Outbuildings in the front garden seem to date from the 19<sup>th</sup> century and include a wooden weatherboarded shed.

***Key Buildings***

Bosley Farmhouse

**Christchurch Historic Urban Character Area 7  
Archaeology**

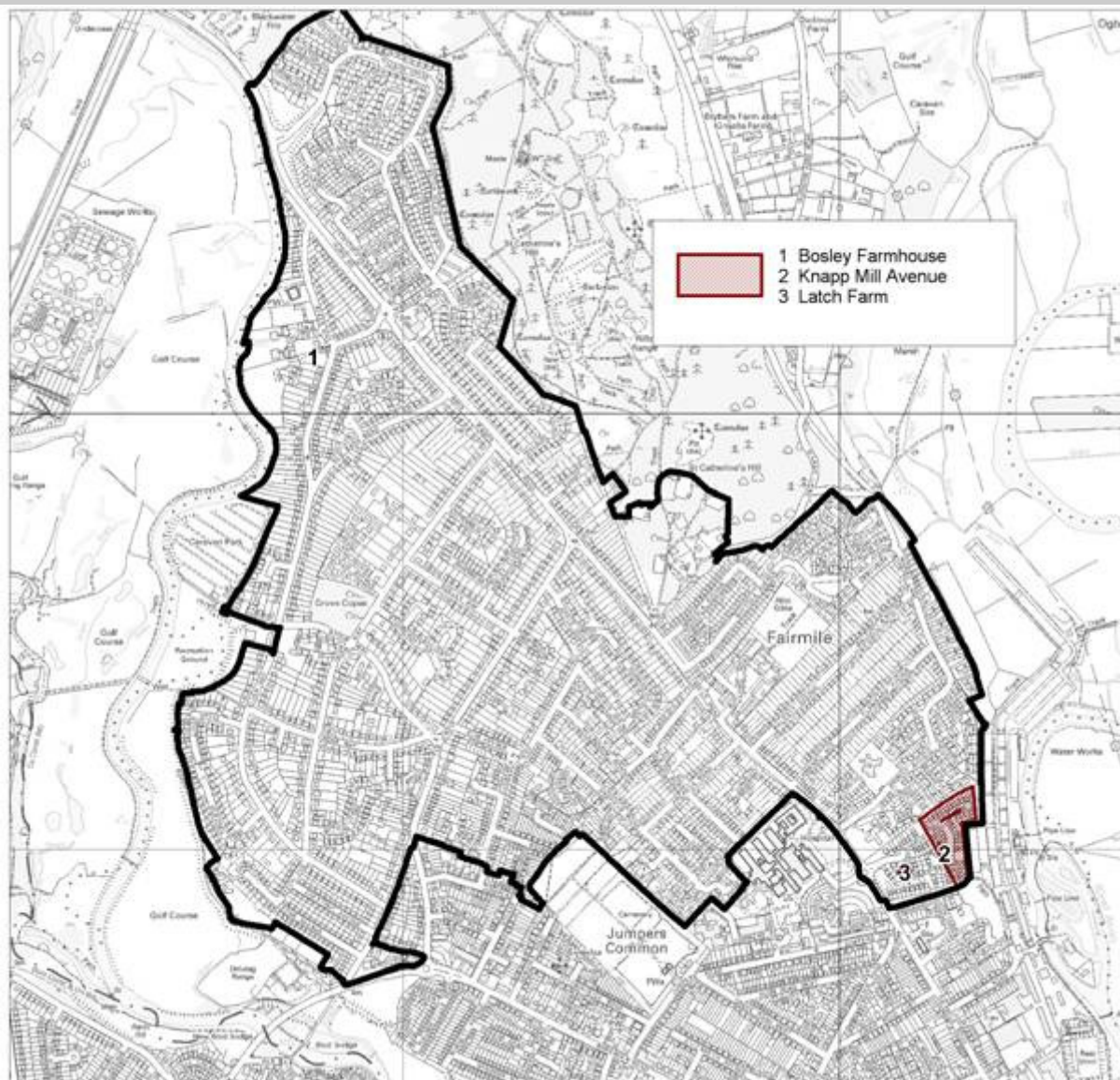


Figure 92: Archaeological features in Historic Urban Character Area 7

**Archaeological Investigations**

No formal archaeological investigations have been undertaken in this character area (Appendix 3). There have been some isolated finds and observations: documentary evidence for a Saxon settlement at Bosley is supported by the discovery of 6-7000 sherds of 9th-14th century pottery during the building of an extension at the rear of Bosley Farmhouse in 1980 and subsequently in the back garden (Coleman, 1999); Medieval pottery was also found in the back garden of a house in St Catherine's Way (Hampshire Field Club, 1968); an unspecified amount of Roman pottery has

been found at Bosley Farmhouse (Hodges, 2000).

**Archaeological Character**

These finds raise the possibility that the site may have been continuously occupied since the Roman period. However the quantity of pottery recovered is not known and it might represent no more than background levels of Roman activity.

**Christchurch Historic Urban Character Area 7  
Designations**

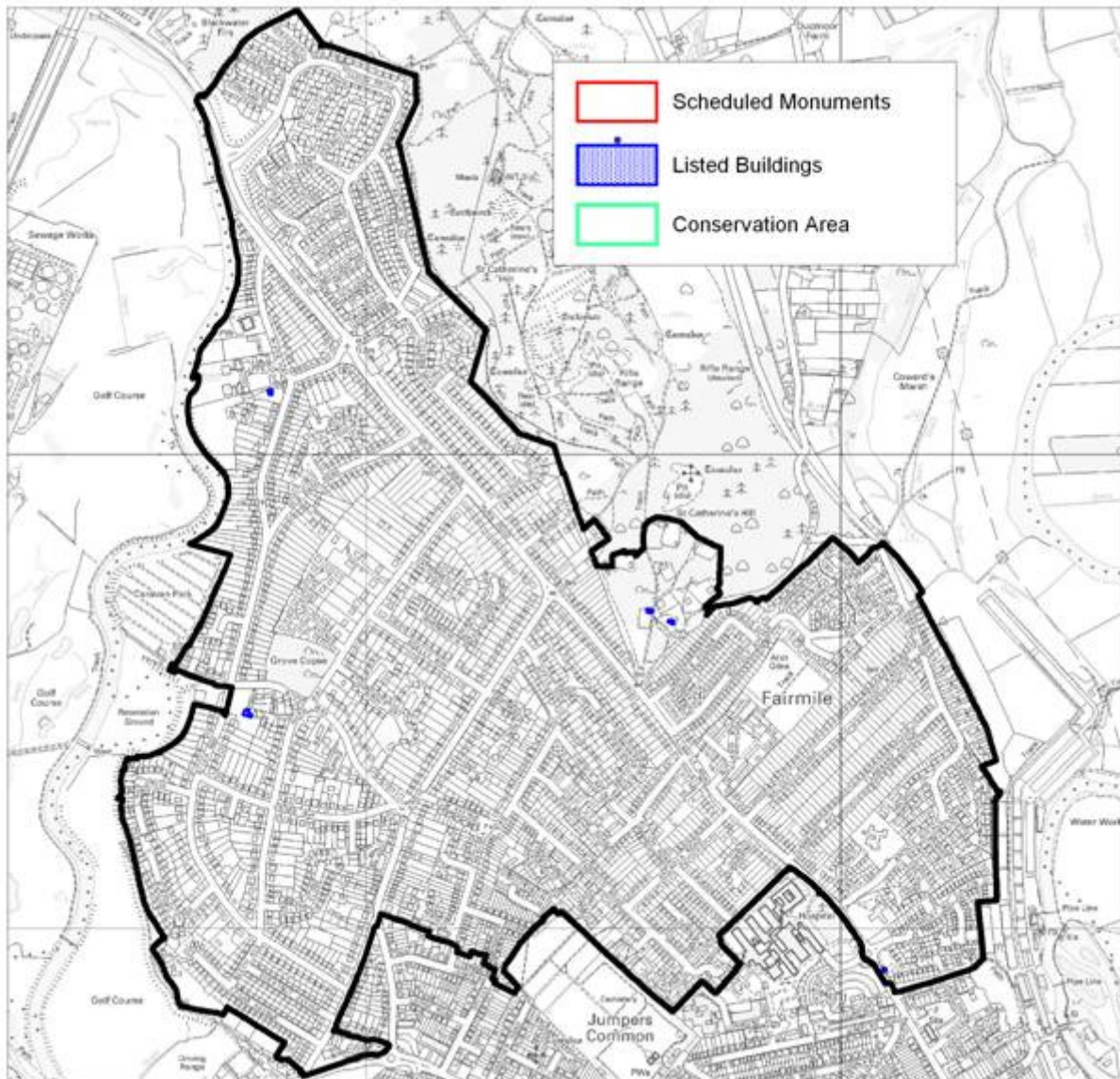


Figure 93: Listed Buildings and other designations in Historic Urban Character Area 7

**Listed Buildings**

There is one Listed Building designations in the Character Area: Bosley Farmhouse, which is Grade II.

**Conservation Areas**

There is no Conservation Area designation within the Character Area.

**Registered Historic Parks and Gardens**

There are no Registered Parks and Gardens within the Character Area.

**Scheduled Monuments**

There are no Scheduled Monuments within this Character Area.

**Christchurch Historic Urban Character Area 7  
Evaluation**

***Strength of Historic Character***

The strength of character of this area is judged to be **Low**. The area is dominated by modern housing estates.

This area has the potential to provide information which would contribute to Research Questions 1-3, 13, 21, 24-25 (Part 7).

***Sensitivity to Large Scale Development***

The area has a **low** sensitivity to major change, since it is largely occupied by modern housing. However, there are some open areas, and the area of the historic hamlet of Bosley must be considered to have a higher sensitivity.

***Archaeological Potential***

There is considerable potential for finding medieval or earlier archaeology in the vicinity of Bosley Farm, and also to the east between Bosley Farm and St Catherine's Hill. The overall archaeological potential of the area as a whole is considered to be **High**.

**Key Characteristics**

- Inter-war suburban estate
- Bronze Age cremation cemetery, Latch Farm
- Fossilised ancient field boundaries
- 16<sup>th</sup> century Farmhouse
- Medieval Grove Copse
- Medieval dispersed settlement

## Christchurch Historic Urban Character Area 8 Stour Meadows

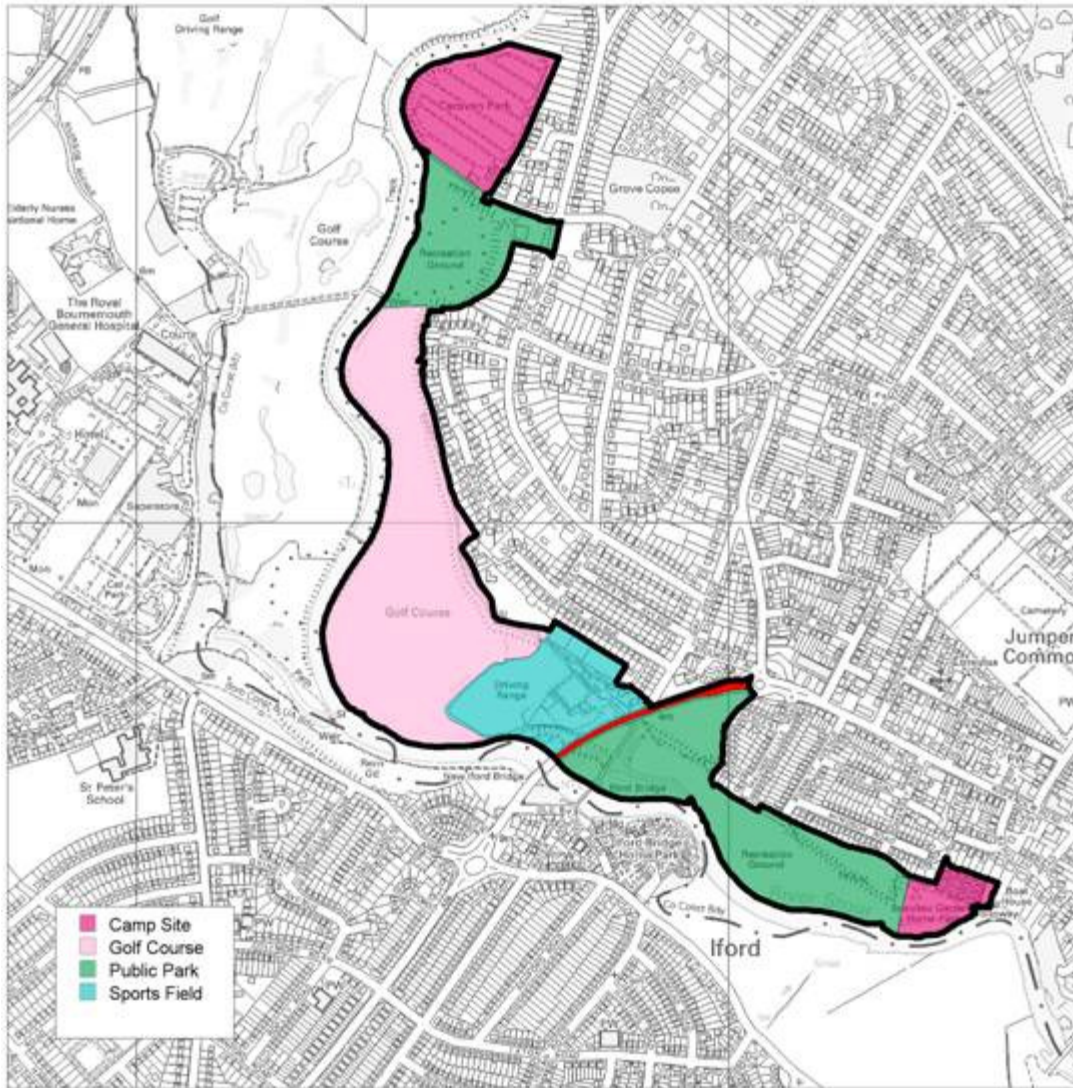


Figure 94: Map of Historic Urban Character Area 8, showing current historic urban character type.



Figure 95: Iford Causeway



Figure 96: Iford Golf Course