



Bere Regis Neighbourhood Plan

Information Statement

This information statement is about the referendum to be held on the Bere Regis Neighbourhood Plan.

About town and country planning

In England, planning applications are determined by local planning authorities such as Purbeck District Council. Planning decisions are made in accordance with the adopted development plan, unless material considerations indicate otherwise. A development plan sets out the planning policies for the development and use of land.

The adopted [Purbeck Local Plan Part 1](#) is therefore the starting point for considering planning applications at the present time. The [National Planning Policy Framework](#) and its [Planning Practice Guidance](#) must be taken into account in the preparation of local and neighbourhood plans and are material considerations in planning decisions.

Our [Local Development Scheme](#) contains information on development plan documents that are being prepared.

About neighbourhood planning and the Bere Regis Neighbourhood Plan

Neighbourhood planning aims to help local communities play a direct role in planning the areas in which they live and work. In parished areas such as Bere Regis, the parish council is responsible for preparing a neighbourhood plan. The plan can show how the community wants land to be used and developed in its area. If a plan is adopted or 'made' following a successful referendum, it becomes part of the development plan for that area. Bere Regis Parish Council started preparing its neighbourhood plan in January 2013. A draft plan was produced and the final draft was submitted to Purbeck District Council in October 2018. An independent examiner was appointed and Purbeck District Council published the [examiner's report](#) in March 2019. The examiner confirmed he was satisfied that, subject to some modifications, the plan meets the 'basic conditions' of the relevant legislation and that it should proceed to referendum.

Purbeck District Council considered the report on 19 March 2019 and issued its [decision statement](#). The Council was in agreement with the examiner's findings and agrees that the plan, [as modified](#), should proceed to referendum.

What is the referendum deciding?

The question which will be asked in the referendum is:

‘Do you want Dorset Council to use the neighbourhood plan for Bere Regis to help it decide planning applications in the neighbourhood area?’

The referendum asks electors to vote ‘yes’ or ‘no’ to this question.

When will the referendum be held?

The referendum will be held on **Thursday 2 May 2019**.

What is the area covered by the referendum?

The referendum area and the area covered by the neighbourhood plan is the parish of Bere Regis.

Who is entitled to vote?

You are entitled to vote in the referendum if you live in the referendum area, you are on the electoral register to vote in local council elections and you are 18 years of age or over on 2 May 2019. You have to be registered to vote by **Friday 12 April 2019** to vote in the referendum. You can check if you are registered to vote by calling the helpline 01305 838299 during normal office hours.

How can people vote?

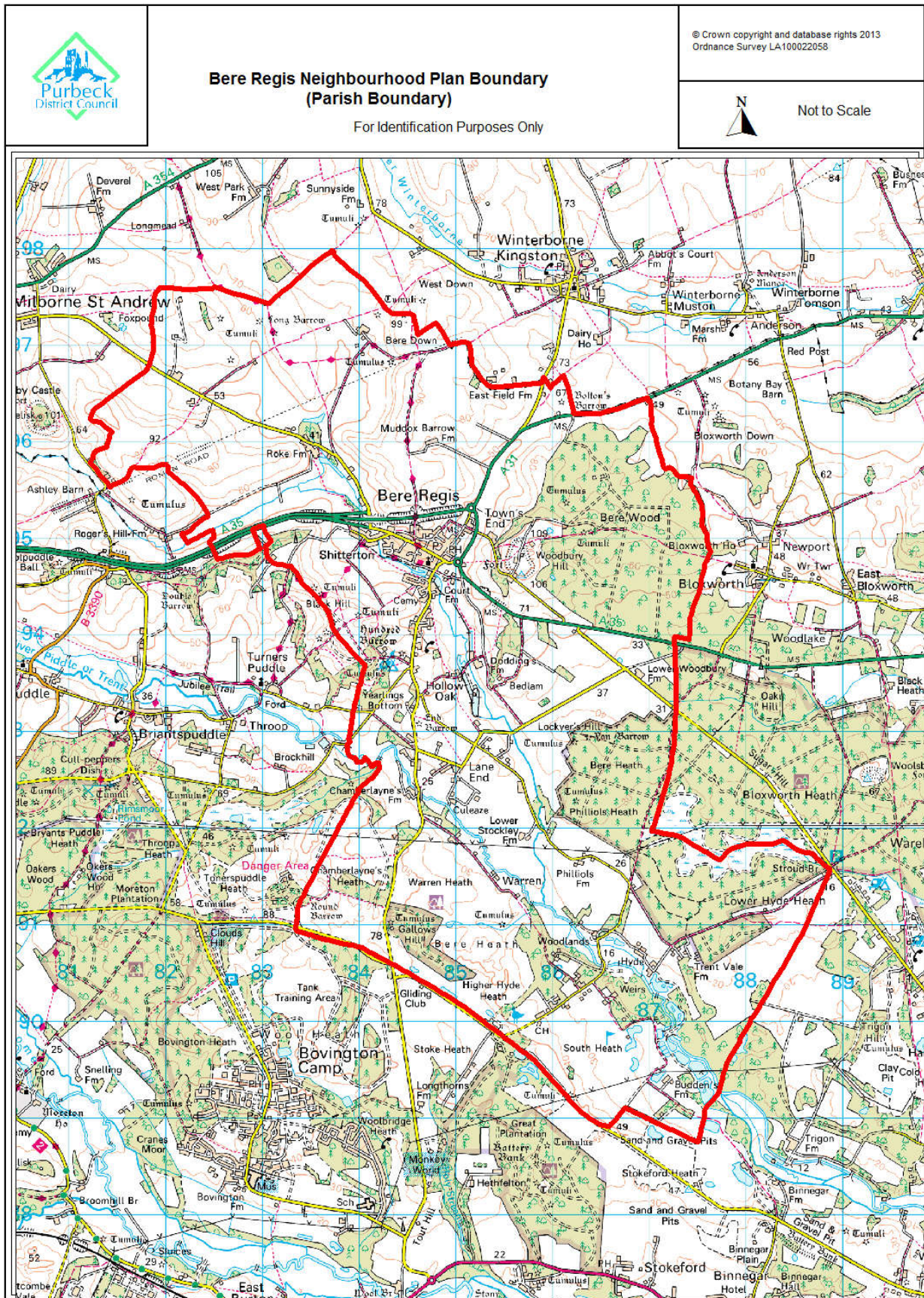
The referendum will be conducted in accordance with procedures which are similar to those used at local government elections.

You can vote in person at the polling station at **Bere Regis Village Hall, North Street, Wareham BH20 7LA**. We will issue poll cards to eligible electors. The polling station will be open from **7.00am to 10.00pm on 2 May 2019**.

To vote by post or proxy in this referendum you will need to have filled in an application form and sent it to the Electoral Registration Officer. Postal and proxy vote application forms are available from <https://www.electoralcommission.org.uk/i-am-a/voter> or by contacting the Electoral Services team on 01929 557219 or 01305 838299.

- Applications to vote by post must be received by **5pm on Monday 15 April 2019**.
- Applications to vote by proxy must be received by **5pm on Wednesday 24 April 2019**. Anyone can be your proxy as long as they are eligible to vote and are willing to vote on your behalf. You will need to tell them how you wish to vote.

Map of the referendum area



Referendum expenses

The referendum expenses limit that will apply in relation to this referendum is £2,362 plus £0.59 per registered elector.

What information is there available about the Bere Regis Neighbourhood Plan?

A copy of the specified documents (those listed below) may be inspected at the following locations:

- Purbeck District Council, Westport House, Worgret Road, Wareham, Dorset BH20 4PP (Mon - Thur 8.45am - 4.45pm; and Fri 8.45am - 4.15pm)
- <https://www.dorsetforyou.gov.uk/planning-buildings-land/planning-policy/purbeck/neighbourhood-planning-purbeck/bere-regis-neighbourhood-plan.aspx>

The specified documents are:

- The **draft** Bere Regis Neighbourhood Plan;
- The **referendum version** Bere Regis Neighbourhood Plan;
- The **independent examiner's report**;
- The **Statement of Common Ground** between Natural England, Purbeck District Council and the Bere Regis Parish Council;
- A **summary of representations** submitted to the examiner;
- A **decision statement** by Purbeck District Council that the Neighbourhood Plan meets the basic conditions and complies with the relevant legislation; and
- This **information statement**, which includes general information as to town and country planning including neighbourhood planning and the referendum.

March 2019