

Chief Executive
Matt Prosser

Permanent Post

Grade: Chief Executive

Salary range: £172,533

Email: Chief.executive@dorsetcouncil.gov.uk

Tel: 01305 221000

Executive Director
for Corporate
Development and
Section 151 Officer

Permanent Post

Grade: Executive
Director

Salary range:
£127,652 to
£143,609

Tel: 01305 221000

Executive Director
for People - Adults

Permanent Post
(Fixed Term
Appointee)

Grade: Executive
Director

Salary range:
£127,652 to
£143,609

Tel: 01305 221000

Executive Director
for People -
Children

Permanent Post

Grade: Executive
Director

Salary range:
£127,652 to
£143,609

Tel: 01305 221000

Executive Director
for Place

Permanent Post

Grade: Executive
Director

Salary range:
£127,652 to
£143,609

Tel: 01305 221000

Director of Public
Health
(for Dorset Council
and Bournemouth,
Christchurch &
Poole Council)

Permanent Post

Grade: Executive
Director

Salary range:
£127,652 to
£143,609

Tel: 01305 221000

Corporate Director
for Legal &
Democratic
Services and
Monitoring Officer

Permanent Post

Grade: Corporate
Director

Salary range:
£90,420 to
£117,015

Tel: 01305 221000

**Executive Director for Corporate
Development and Section 151 Officer**

**Corporate Director
for Finance &
Commercial**

Permanent Post

Grade: Corporate
Director

Salary range:
£90,420 to
£117,015

Tel: 01305 221000

**Corporate Director
for Transformation,
Innovation & Digital**

Permanent Post

Grade: Corporate
Director

Salary range:
£90,420 to
£117,015

Tel: 01305 221000

Executive Director for Place

**Corporate Director
for Climate &
Ecological
Sustainability**

Fixed Term post

Grade: Corporate
Director

Salary range:
£90,420 to
£117,015

Tel: 01305 221000

**Corporate Director
for Assets &
Property**

Permanent post
(Fixed Term
Appointee)

Grade: Corporate
Director

Salary range:
£90,420 to
£117,015

Tel: 01305 221000

**Corporate Director
for Economic
Growth &
Infrastructure**

Permanent Post

Grade: Corporate
Director

Salary range:
£90,420 to
£117,015

Tel: 01305 221000

**Corporate Director
for Place Services**

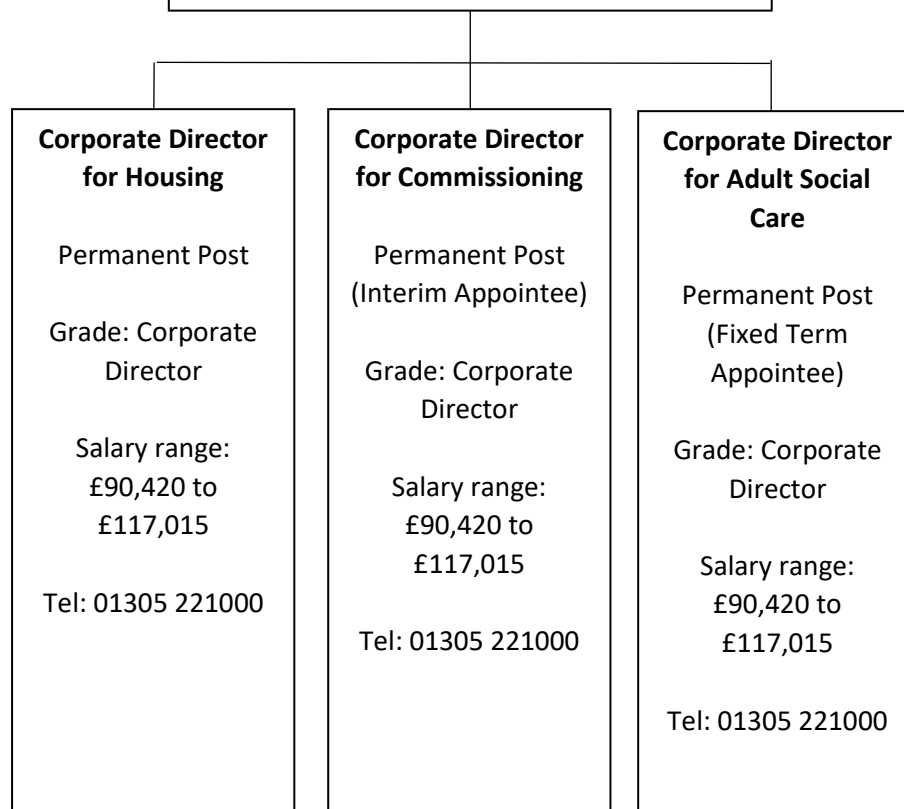
Permanent Post
(Interim Appointee)

Grade: Corporate
Director

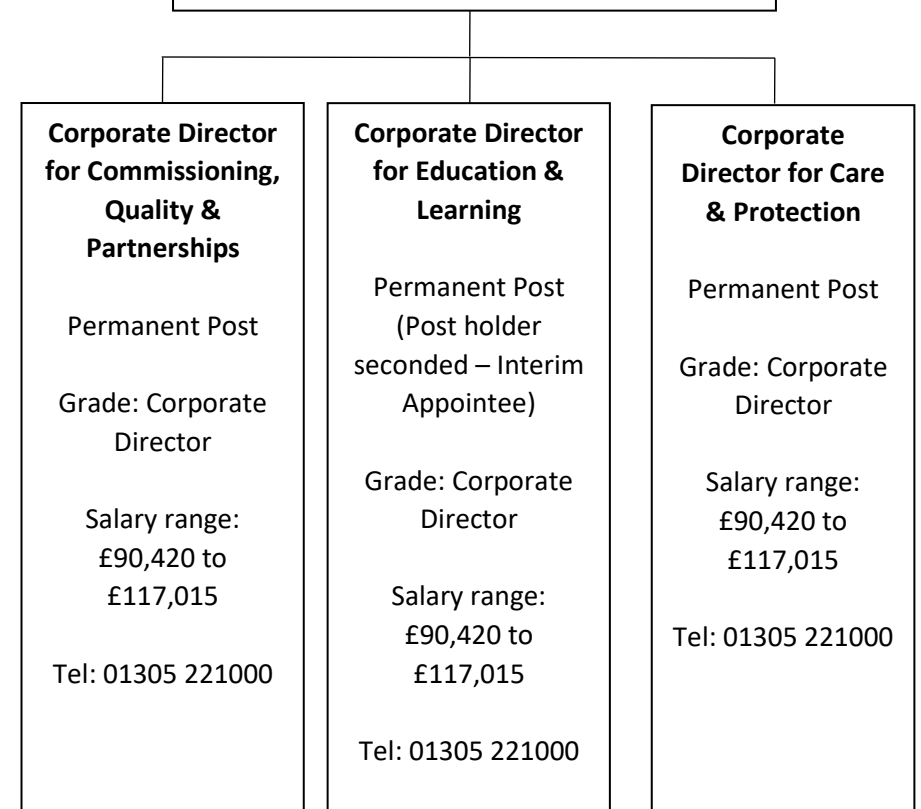
Salary range:
£90,420 to
£117,015

Tel: 01305 221000

Executive Director for People – Adults



Executive Director for People – Children



**Director of Public Health
(for Dorset Council and Bournemouth,
Christchurch & Poole Council)**

**Consultant in
Public Health**

Permanent Post

Grade: Corporate
Director

Salary range:
£90,420 to
£117,015

Tel: 01305 221000

**Consultant in
Public Health**

Permanent Post

Grade: Corporate
Director

Salary range:
£90,420 to
£117,015

Tel: 01305 221000

**Deputy Director of
Public Health**

Permanent Post

Grade: Corporate
Director

Salary range:
£90,420 to
£117,015

Tel: 01305 221000

**Consultant in
Public Health**

Permanent Post

Grade: Corporate
Director

Salary range:
£90,420 to
£117,015

Tel: 01305 221000

**Consultant in
Public Health**

Permanent Post

Grade: Corporate
Director

Salary range:
£90,420 to
£117,015

Tel: 01305 221000

**Consultant in
Public Health**

Permanent Post

Grade: Corporate
Director

Salary range:
£90,420 to
£117,015

Tel: 01305 221000