

## Appendix 1 – Data used

The GIS datasets that were included in the assessment are listed in the table below.

Some of these datasets are presented as simple lines (e.g. road centre lines), therefore in order to ensure they were appropriately included in the spatial analysis, buffer distances have been applied to model their approximate footprint:

- Railway lines – a 7.5m buffer has been applied to achieve a 15m-wide footprint;
- Roads – a 10m buffer has been applied to dual carriageway (A road and primary road) to achieve a 20m-wide footprint and a 5m buffer to all other roads to achieve a 10m-wide footprint.

All other datasets have been provided with their actual footprint and therefore included in the spatial analysis as provided.

For the spatial assessment all physical constraint and environmental asset datasets have been converted into 10m raster datasets. During the conversion and subsequent analysis it was ensured that all smaller features (e.g. Listed Buildings point locations, linear coastal management areas), were retained. The results of the spatial assessments were also prepared as 10m raster datasets.

DATASET NAME	SOURCE	DATE OF DATA / DATE PROVIDED
<b>LANDSCAPE AND RECREATION</b>		
Dorset AONB	Natural England	February 2017
Allotments	Purbeck DC	February 2017
Parks and gardens	Purbeck DC	February 2017
Open space and amenity open space	Purbeck DC	February 2017
SANGs	Purbeck DC	September 2017
Open country and Registered common land	Natural England	January 2017
Country Park	Natural England	September 2017
<b>HISTORIC ENVIRONMENT</b>		
World Heritage Site	Historic England	November 2016
Listed Buildings	Historic England	January 2017
Registered Parks and Gardens	Historic England	January 2017
Scheduled Monuments	Historic England	November 2016
Conservation Areas	Purbeck DC	February 2017
Dorset HER	Dorset CC	March 2017
<b>WILDLIFE SITES AND HABITATS</b>		
Ancient Woodland Inventory	Natural England	February 2017
SPA/SAC	Natural England	February 2017
SSSI	Natural England	February 2017
SSSI IRZ (residential)	Natural England	January 2017
Ramsar	Natural England	February 2017
NNR	Natural England	February 2017
LNR	Natural England	February 2017
SINC & LGS	DERC via Purbeck DC	March 2017

DATASET NAME	SOURCE	DATE OF DATA / DATE PROVIDED
Agricultural Land Classification	Natural England	February 2017
p SPA	Natural England	November 2016
UK Priority (BAP) Habitats	Natural England	September 2016
National Forestry Inventory	Forestry Commission	August 2017
<b>INFRASTRUCTURE</b>		
Railway	Purbeck DC	February 2017
Roads	Purbeck DC	February 2017
Railway stations	Ordnance Survey	July 2016
Buildings	Ordnance Survey	July 2016
Bus stops	Dorset County Council	February 2017
Town and Local Centre	Purbeck DC	April 2017
GP surgeries	Dorset County Council	February 2017
Hospitals	Dorset County Council	February 2017
Schools (primary and secondary)	Dorset County Council	February 2017
<b>HYDROLOGY AND FLOODING</b>		
Flood zones 2 and 3	Purbeck DC	February 2017
Flood Storage Areas	Environment Agency	February 2017
Indicative erosion zones	Purbeck DC	February 2017
Risk of flooding from surface water (1:30 and 1:100 years)	Environment Agency	September 2017
Water (rivers, canals, lakes)	Ordnance Survey	

## Appendix 2 - Bibliography

Allotments Act 1925. c. 61 (Regnal. 15\_and\_16\_Geo\_5).

Borough of Poole and Purbeck District Council; Bournemouth Borough Council; Christchurch Borough Council; Dorset County Council; East Dorset District Council; Environment Agency; Forestry Commission and Natural England (2011). Investing in Green Places - South East Dorset Green Infrastructure Strategy. [online] Available at: <https://www.dorsetforyou.gov.uk/greeninfrastructure> [Accessed 31 Aug. 2017].

Borough of Poole, Bournemouth Borough Council, (2016). Dorset Heathlands Planning Framework 2015-2020 Supplementary Planning Document. [online] p.114. Available at: [https://www.dorsetforyou.gov.uk/media/219362/Dorset-Heathlands-Planning-Framework-2015-2020-SPD/pdf/Dorset\\_Heathlands\\_Planning\\_Framework\\_2015-2020\\_SPD\\_Jan2016.pdf](https://www.dorsetforyou.gov.uk/media/219362/Dorset-Heathlands-Planning-Framework-2015-2020-SPD/pdf/Dorset_Heathlands_Planning_Framework_2015-2020_SPD_Jan2016.pdf) [Accessed 31 Aug. 2017].

Bournemouth Borough Council (2011). Poole and Christchurch Bays Shoreline Management Plan Review Sub-cell 5f - Section 4. Policy Development Zone 4. [online] Available at: <http://www.twobays.net/SMP2%20Final/Main%20Report/Section%204%20-%204.5%20PDZ4.pdf> [Accessed 31 Aug. 2017].

Bournemouth Borough Council (2011). Poole and Christchurch Bays Shoreline Management Plan - C.3 EROSION MAPPING. [online] Available at: [http://www.twobays.net/SMP2%20Final/Appendices/C3\\_EROSION\\_MAPPING\\_reformatted.pdf](http://www.twobays.net/SMP2%20Final/Appendices/C3_EROSION_MAPPING_reformatted.pdf) [Accessed 31 Aug. 2017].

Common-land.com. (2017). Land near Purbeck. [online] Available at: <https://common-land.com/lands/show/Purbeck> [Accessed 31 Aug. 2017].

Cornwall Archaeological Unit (Cornwall Council) (2016). National Mapping Programme - Mapping of Wild Purbeck: For Historic England. [online] Available at: <https://content.historicengland.org.uk/images-books/publications/nmp-mapping-of-wild-purbeck/wild-purbeck-nmp-6600-report.pdf/> [Accessed 31 Aug. 2017].

DEFRA (2011). Biodiversity 2020: A strategy for England's wildlife and ecosystem services. [online] p.12. Available at: <https://www.gov.uk/government/publications/biodiversity-2020-a-strategy-for-england-s-wildlife-and-ecosystem-services> [Accessed 31 Aug. 2017].

DEFRA (2011). The national flood and coastal erosion risk. Understanding the risks, empowering communities, building resilience. [online] Available at: [https://www.gov.uk/government/uploads/system/uploads/attachment\\_data/file/228898/9780108510366.pdf](https://www.gov.uk/government/uploads/system/uploads/attachment_data/file/228898/9780108510366.pdf) [Accessed 31 Aug. 2017].

DEFRA. (2017). 2010 to 2015 government policy: flooding and coastal change - GOV.UK. [online] Available at: <https://www.gov.uk/government/publications/2010-to-2015-government-policy-flooding-and-coastal-change/2010-to-2015-government-policy-flooding-and-coastal-change> [Accessed 31 Aug. 2017].

DEFRA. (2017). Magic Map Application. [online] Available at: <http://magic.defra.gov.uk/MagicMap.aspx> [Accessed 31 Aug. 2017].

Department for Communities and Local Government (2012). National Planning Policy Framework. [online] Available at: <https://www.gov.uk/government/collections/planning-practice-guidance> [Accessed 31 Aug. 2017].

Department for Environment, Food and Rural Affairs (2009). Safeguarding our Soils: A Strategy for England. [online] Available at: [https://www.gov.uk/government/uploads/system/uploads/attachment\\_data/file/69261/pb13297-soil-strategy-090910.pdf](https://www.gov.uk/government/uploads/system/uploads/attachment_data/file/69261/pb13297-soil-strategy-090910.pdf) [Accessed 31 Aug. 2017].

Department for Environment, Food and Rural Affairs (2015). Agriculture in the United Kingdom. [online] Available at: [https://www.gov.uk/government/uploads/system/uploads/attachment\\_data/file/557993/AUK-2015-05oct16.pdf](https://www.gov.uk/government/uploads/system/uploads/attachment_data/file/557993/AUK-2015-05oct16.pdf) [Accessed 31 Aug. 2017].

DIGS - Dorset's Important Geological Sites Group. (2017). South East Dorset. [online] Available at: <http://dorsetrigs.org.uk/southeastrigns/> [Accessed 31 Aug. 2017].

Dorset and East Devon Coast World Heritage Site Partnership (2014). Dorset and East Devon Coast World Heritage Site Management Plan 2014 – 2019. [online] Available at: <http://jurassiccoast.org/wp-content/uploads/2015/10/Jurassic-Coast-World-Heritage-Site-Management-Plan-2014---2019-Approved-small-file.pdf> [Accessed 31 Aug. 2017].

Dorset AONB Partnership (2014). Dorset Area of Outstanding Natural Beauty: A Framework for the Future: AONB Management Plan 2014 - 2019. [online] Available at: <http://www.dorsetaonb.org.uk/assets/downloads/ManagementPlan/2014-2019-DAONB-MP.pdf> [Accessed 31 Aug. 2017].

Dorset AONB Partnership (2017). Wild Purbeck - Dorset AONB Partnership. [online] Dorsetaonb.org.uk. Available at: <http://www.dorsetaonb.org.uk/our-work/wildpurbeck> [Accessed 31 Aug. 2017].

Dorset Environmental Records Centre (2013). Environment Report for the Wild Purbeck Nature Improvement Area. [online] Available at: [http://www.dorsetaonb.org.uk/assets/downloads/wild-purbeck/Environment\\_Report\\_for\\_Wild\\_Purbeck\\_NIA\\_27\\_03\\_2013.pdf](http://www.dorsetaonb.org.uk/assets/downloads/wild-purbeck/Environment_Report_for_Wild_Purbeck_NIA_27_03_2013.pdf) [Accessed 31 Aug. 2017].

Dorset For You (2017). Purbeck's Community Infrastructure Levy Charging Schedule Examination - dorsetforyou.com. [online] Available at: <https://www.dorsetforyou.gov.uk/Purbeck/CILExamination> [Accessed 31 Aug. 2017].

Dorset For You. (2017). Coast protection in Purbeck. [online] Available at: <https://www.dorsetforyou.gov.uk/coastprotection/purbeck> [Accessed 31 Aug. 2017].

Dorset For You. (2017). Dorset Heathlands Planning Framework. [online] Available at: <https://www.dorsetforyou.gov.uk/article/387392/Dorset-Heathlands-Planning-Framework> [Accessed 31 Aug. 2017].

Dorset Local Nature Partnership (2014). Natural Value: The State of Dorset's Environment, Dorset Local Nature Partnership. [online] Available at: <https://www.dorsetlnp.org.uk/hres/natural-value-report.pdf> [Accessed 31 Aug. 2017].

Dorset Wildlife trust (2003). The Dorset Biodiversity Strategy. Topic Action Plan: Forestry and Woodland. [online] Available at: [https://www.dorsetwildlifetrust.org.uk/the\\_dorset\\_biodiversity\\_strategy.html](https://www.dorsetwildlifetrust.org.uk/the_dorset_biodiversity_strategy.html) [Accessed 31 Aug. 2017].

Dorset Wildlife Trust (2003). Topic Action Plan: Agriculture. [online] Available at: <https://www.dorsetwildlifetrust.org.uk/hres/06ch23.pdf> [Accessed 31 Aug. 2017].

Dorset Wildlife Trust (2003). Topic Action Plan: Forestry and Woodland Management. [online] Available at: <https://www.dorsetwildlifetrust.org.uk/hres/05ch22.pdf> [Accessed 31 Aug. 2017].

Dorsetforyou.gov.uk. (2017). Conservation Areas. [online] Available at: <https://www.dorsetforyou.gov.uk/article/384644/Conservation-Areas> [Accessed 31 Aug. 2017].

Dorsetforyou.gov.uk. (2017). Listed buildings in Purbeck. [online] Available at: <https://www.dorsetforyou.gov.uk/listedbuildings/purbeck> [Accessed 31 Aug. 2017].

Environment Agency (2010). The coastal handbook: A guide for all those working on the coast. [online] Available at: [https://www.gov.uk/government/uploads/system/uploads/attachment\\_data/file/292931/geho0610bsue-e-e.pdf](https://www.gov.uk/government/uploads/system/uploads/attachment_data/file/292931/geho0610bsue-e-e.pdf) [Accessed 31 Aug. 2017].

Environment Agency (2012). Managing Flood Risk. Frome and Piddle Catchment Flood Management Plan: Summary Report. [online] Available at: [https://www.gov.uk/government/uploads/system/uploads/attachment\\_data/file/294053/Frome\\_and\\_Piddle\\_Catchment\\_Flood\\_Management\\_Plan.pdf](https://www.gov.uk/government/uploads/system/uploads/attachment_data/file/294053/Frome_and_Piddle_Catchment_Flood_Management_Plan.pdf) [Accessed 31 Aug. 2017].

Environment Agency. (2017). Environment Agency Historic River Quality (1988 - 2009) - What's in your backyard?. [online] Available at: [http://maps.environment-agency.gov.uk/wiyby/wiybyController?x=357683.0&y=355134.0&scale=1&layerGroups=default&ep=map&lang=\\_e&textonly=off&topic=riverquality#x=391186&y=84353&lg=2,10,&scale=6](http://maps.environment-agency.gov.uk/wiyby/wiybyController?x=357683.0&y=355134.0&scale=1&layerGroups=default&ep=map&lang=_e&textonly=off&topic=riverquality#x=391186&y=84353&lg=2,10,&scale=6) [Accessed 31 Aug. 2017].

Environment Agency. (2017). Groundwater- What's in your backyard?. [online] Available at: [http://maps.environment-agency.gov.uk/wiyby/wiybyController?x=392500.0&y=87500.0&topic=groundwater&ep=map&scale=9&location=Wareham,%20Dorset&lang=\\_e&layerGroups=default&distance=&textonly=off#x=381452&y=87687&lg=4,10,&scale=5](http://maps.environment-agency.gov.uk/wiyby/wiybyController?x=392500.0&y=87500.0&topic=groundwater&ep=map&scale=9&location=Wareham,%20Dorset&lang=_e&layerGroups=default&distance=&textonly=off#x=381452&y=87687&lg=4,10,&scale=5) [Accessed 31 Aug. 2017].

Environment Agency. (2017). Nitrate Vulnerable Zones - What's in your backyard?. [online] Available at: [http://maps.environment-agency.gov.uk/wiyby/wiybyController?topic=nvz&layerGroups=default&lang=\\_e&ep=map&scale=6&x=396180&y=91662#x=396147&y=87449&lg=2,10,&scale=5](http://maps.environment-agency.gov.uk/wiyby/wiybyController?topic=nvz&layerGroups=default&lang=_e&ep=map&scale=6&x=396180&y=91662#x=396147&y=87449&lg=2,10,&scale=5) (2013 and 2017 data) [Accessed 31 Aug. 2017].

Environment Agency; Dorset County Council; Purbeck District Council and Wessex Water (2016). Lytchett Minster Flood Risk Study - Non-Technical Summary.

Footprint Ecology (2011). Habitat Regulations of the Purbeck Core Strategy. [online] Available at: [https://www.dorsetforyou.gov.uk/media/166011/Habitats-Regulations-Assessment---Core-Strategy---Proposed-Changes-to-the-Pre-Submission---2011/pdf/Purbeck\\_HRA\\_proposed\\_changes\\_to\\_pre\\_submission\\_as\\_sent\\_30th\\_Aug.pdf](https://www.dorsetforyou.gov.uk/media/166011/Habitats-Regulations-Assessment---Core-Strategy---Proposed-Changes-to-the-Pre-Submission---2011/pdf/Purbeck_HRA_proposed_changes_to_pre_submission_as_sent_30th_Aug.pdf) [Accessed 31 Aug. 2017].

Footprint Ecology (2016). Habitat Regulations Assessment of the Partial Review of the Purbeck Local Plan Part 1; Options. [online] Available at: <https://www.dorsetforyou.gov.uk/media/214756/habitats-regs-assessment/pdf/habitats-regs-assessment.pdf> [Accessed 31 Aug. 2017].

Forestry Commission (2013). Purbeck Forest Design Plan: Phase F - South England Forest District. [online] Available at: [https://www.forestry.gov.uk/pdf/Introduction.pdf/\\$file/Introduction.pdf](https://www.forestry.gov.uk/pdf/Introduction.pdf/$file/Introduction.pdf) [Accessed 31 Aug. 2017].

Forestry Commission (2017). The UK Forestry Standard. [online] Available at: <https://www.forestry.gov.uk/theukforestrystandard> [Accessed 31 Aug. 2017].

Forestry Commission England (2013). Purbeck Forest Design Plan Phase F. South England Forest District. [online] Available at: [https://www.forestry.gov.uk/pdf/Introduction.pdf/\\$file/Introduction.pdf](https://www.forestry.gov.uk/pdf/Introduction.pdf/$file/Introduction.pdf) [Accessed 31 Aug. 2017].

GL Hearn (2015). Eastern Dorset 2015 Strategic Housing Market Assessment. [online] Available at: <http://www.poole.gov.uk/EasySiteWeb/GatewayLink.aspx?allId=36432> [Accessed 31 Aug. 2017].

Gov.uk. (2012). Dorset Stour: Catchment flood management plan - GOV.UK. [online] Available at: <https://www.gov.uk/government/publications/dorset-stour-catchment-flood-management-plan> [Accessed 31 Aug. 2017].

Gov.uk. (2012). Frome and Piddle: Catchment flood management plan - GOV.UK. [online] Available at: <https://www.gov.uk/government/publications/frome-and-piddle-catchment-flood-management-plan> [Accessed 31 Aug. 2017].

Gov.uk. (2012). West Dorset: Catchment flood management plan - GOV.UK. [online] Available at: <https://www.gov.uk/government/publications/west-dorset-catchment-flood-management-plan> [Accessed 31 Aug. 2017].

Gov.uk. (2017). Planning practice guidance - GOV.UK. [online] Available at: <https://www.gov.uk/government/collections/planning-practice-guidance> [Accessed 31 Aug. 2017].

Highways England (2017). Design Manual for Roads and Bridges (DMRB). Volume 11, Section 3 Environmental Assessment Techniques, Part 1 HA 207/07 Air Quality.

Historicengland.org.uk. (2017). Conservation Areas. [online] Available at: <https://historicengland.org.uk/listing/what-is-designation/local/conservation-areas/> [Accessed 31 Aug. 2017].

Historicengland.org.uk. (2017). Historic Environment Records (HERs). [online] Available at: <https://historicengland.org.uk/advice/technical-advice/information-management/hers/> [Accessed 31 Aug. 2017].

Historicengland.org.uk. (2017). Registered Parks & Gardens. [online] Available at: <https://historicengland.org.uk/listing/what-is-designation/registered-parks-and-gardens/> [Accessed 31 Aug. 2017].

Historicengland.org.uk. (2017). Search the Heritage at Risk Register. [online] Available at: <https://historicengland.org.uk/advice/heritage-at-risk/search-register/> [Accessed 31 Aug. 2017].

Historicengland.org.uk. (2017). Search the List. [online] Available at: <https://www.historicengland.org.uk/listing/the-list/> [Accessed 31 Aug. 2017].

Historicengland.org.uk. (2017). What is Listing?. [online] Available at: <https://historicengland.org.uk/listing/what-is-designation/> [Accessed 31 Aug. 2017].

Institute of Highways and Transportation (2000). Guidelines for Providing for Journeys on Foot. London: The Institution of Highways and Transportation

Magic.defra.gov.uk. (2017). Magic Map Application. [online] Available at: <http://magic.defra.gov.uk/MagicMap.aspx> [Accessed 31 Aug. 2017].

Natural England (2012). Agricultural Land Classification: protecting the best and most versatile agricultural land. Technical Information Note TIN049. [online] Available at: <http://publications.naturalengland.org.uk/file/4424325> [Accessed 31 Aug. 2017].

Natural England. (2017). SSSI Condition Summary. [online] Available at: <https://designatedsites.naturalengland.org.uk/ReportConditionSummary.aspx?SiteCode=S2000220&ReportTitle=River%20Frome%20SSSI> [Accessed 31 Aug. 2017].

Natural England. (n.d.). Natural England Access to Evidence - Site Improvement Plans: South West. [online] Available at: <http://publications.naturalengland.org.uk/category/5755515191689216> [Accessed 31 Aug. 2017].

Peter Brett Associates (2017). Flood Risk and Surface Water Drainage: Technical Overview – Wool Urban Extension: For Lulworth Estate and Redwood Partnership.

Planning (Listed Buildings and Conservation Areas) Act 1990.

Planning Officers Society (2015). Planning for a Better Future: Our planning manifesto for the next government - March 2015. We need to talk about the Green Belt. [online] Available at: [http://www.planningofficers.org.uk/downloads/pdf/POS%20Manifesto%20-%20Green%20Belt%20Policy\\_Mar15.pdf](http://www.planningofficers.org.uk/downloads/pdf/POS%20Manifesto%20-%20Green%20Belt%20Policy_Mar15.pdf) [Accessed 31 Aug. 2017].

Purbeck District Council (2012). Purbeck Local Plan Part 1: Planning Purbeck's Future. [online] Available at: <https://www.dorsetforyou.gov.uk/local-plan/part-1/purbeck> [Accessed 31 Aug. 2017].

Purbeck District Council (2013). Planning Purbeck's Future - Purbeck Infrastructure Plan and Delivery Schedule 2006-2027: Update - April 2013. [online] Available at: [https://www.dorsetforyou.gov.uk/media/183268/Purbeck-Infrastructure-Plan-and-Delivery-Schedule-April-2013/pdf/13-01-11\\_Infrastructure\\_Plan\\_-April\\_2013.doc](https://www.dorsetforyou.gov.uk/media/183268/Purbeck-Infrastructure-Plan-and-Delivery-Schedule-April-2013/pdf/13-01-11_Infrastructure_Plan_-April_2013.doc) [Accessed 31 Aug. 2017].

Purbeck District Council (2013). Sustainability Appraisal Scoping Report Partial Review of the Purbeck Local Plan Part 1. [online] Available at: [https://www.dorsetforyou.gov.uk/media/200979/Purbeck-Local-Plan-Part-1-Partial-Review-Sustainability-Appraisal-Scoping-Report/pdf/Purbeck\\_SA\\_scoping\\_for\\_partial\\_review.pdf](https://www.dorsetforyou.gov.uk/media/200979/Purbeck-Local-Plan-Part-1-Partial-Review-Sustainability-Appraisal-Scoping-Report/pdf/Purbeck_SA_scoping_for_partial_review.pdf) [Accessed 31 Aug. 2017].

Purbeck District Council (2015). Reviewing the Plan for Purbeck's future - Purbeck Local Plan Partial review: Green Belt Review, January 2015. [online] Available at: [https://www.dorsetforyou.gov.uk/media/201408/Green-Belt-Review/pdf/Green\\_Belt\\_Review.pdf](https://www.dorsetforyou.gov.uk/media/201408/Green-Belt-Review/pdf/Green_Belt_Review.pdf) [Accessed 31 Aug. 2017].

Purbeck District Council (2015). Swanage Green Infrastructure Strategy - Draft for Consultation: September 2015. [online] Available at: <https://www.dorsetforyou.gov.uk/swanage-local-plan> [Accessed 31 Aug. 2017].

Purbeck District Council (2016). Purbeck Local Plan Partial Review: Site Selection Background Paper (2016). [online] Available at: <https://www.dorsetforyou.gov.uk/media/214775/site-selection-background-paper/pdf/site-selection-background-paper.pdf> [Accessed 31 Aug. 2017].

Purbeck District Council (2016). Purbeck Local Plan Partial Review: Strategic Flood Risk Assessment. [online] Available at: <https://www.dorsetforyou.gov.uk/media/214772/SFRA-may-2016/pdf/SFRA-may-2016.pdf> [Accessed 31 Aug. 2017].

Purbeck District Council (2016). Reviewing the Plan for Purbeck's Future: Purbeck Local Plan Partial Review - Coastal Change Management Areas Background paper, June 2016. [online] Available at: <http://Purbeck Local Plan Partial Review: Coastal Change Management Area Background Paper> [Accessed 31 Aug. 2017].

Purbeck District Council (2016). Reviewing the Plan for Purbeck's Future - Purbeck Local Plan Partial Review: Green Belt Review Update, June 2016. [online] Available at: <https://www.dorsetforyou.gov.uk/media/214764/green-belt-review-options-2016/pdf/green-belt-review-options-2016.pdf> [Accessed 31 Aug. 2017].

Purbeck District Council (2017). Purbeck Local Plan Partial Review: Partial Review Options Consultation Report - January 2017. [online] Available at: <https://www.dorsetforyou.gov.uk/purbeck-partial-review> [Accessed 31 Aug. 2017].

Purbeck District Council and Purbeck Local Development Framework (2012). Core Strategy Background Paper. [online] Available at: [https://www.dorsetforyou.gov.uk/media/171364/Volume-11-Habitats-Regulations-Background-Paper/pdf/Volume\\_11-\\_Habitats\\_Regulations\\_Background\\_Paper.pdf](https://www.dorsetforyou.gov.uk/media/171364/Volume-11-Habitats-Regulations-Background-Paper/pdf/Volume_11-_Habitats_Regulations_Background_Paper.pdf) [Accessed 31 Aug. 2017].

Purbeck Heritage Committee (2009). Purbeck Heritage Strategy 2010-2015: Thriving communities in balance with the natural environment. [online] Available at: [https://www.dorsetforyou.gov.uk/media/147917/Purbeck-Heritage-Strategy/pdf/Heritage\\_Strategy\\_2009\\_for\\_web\\_ALI.pdf](https://www.dorsetforyou.gov.uk/media/147917/Purbeck-Heritage-Strategy/pdf/Heritage_Strategy_2009_for_web_ALI.pdf) [Accessed 31 Aug. 2017].

Purbeck Heritage Network (2017). Purbeck Heritage Network - working in partnership to keep Purbeck special: Heritage Priorities 2017-2021. [online] Available at: <https://www.dorsetforyou.gov.uk/media/213065/Purbeck-Heritage-Priorities-2017-2021/pdf/low-res-purbeck-heritage-priorities.pdf> [Accessed 31 Aug. 2017].

Sdadcg.org. (2017). SDADCAG - What is a SMP?. [online] Available at: <http://www.sdadcg.org/SMP.html> [Accessed 31 Aug. 2017].

Secretariat of the Convention on Biological Diversity (2000). Sustaining life on Earth: How the Convention on Biological Diversity promotes nature and human well-being. [online] Secretariat of the Convention on Biological Diversity. Available at: <https://www.cbd.int/doc/publications/cbd-sustain-en.pdf> [Accessed 31 Aug. 2017].

The Conservation of Habitats and Species Regulations 2010. No. 490.

The Institute of Highways and Transportation (2000). Guidelines for Providing Journeys on Foot. [online] Available at: [https://www.google.co.uk/url?sa=t&rct=j&q=&esrc=s&source=web&cd=1&ved=0ahUKEwjItd390oPWAhWBB8AKHdaYDsEQFggoMAA&url=http%3A%2F%2Fwww.ciht.org.uk%2Fdownload.cfm%2Fdocid%2FD66AD936-281C-4220-BF109289B5D01848&usq=AFQjCNHglSdMT-d4e0TwMGRI-J1Hd\\_Mt8A](https://www.google.co.uk/url?sa=t&rct=j&q=&esrc=s&source=web&cd=1&ved=0ahUKEwjItd390oPWAhWBB8AKHdaYDsEQFggoMAA&url=http%3A%2F%2Fwww.ciht.org.uk%2Fdownload.cfm%2Fdocid%2FD66AD936-281C-4220-BF109289B5D01848&usq=AFQjCNHglSdMT-d4e0TwMGRI-J1Hd_Mt8A) [Accessed 31 Aug. 2017].

The Local Authorities of Poole, North Dorset, Purbeck and West Dorset (2015). Nitrogen Reduction in Poole Harbour Supplementary Planning Document. [online] Available at: <http://www.poole.gov.uk/planning-and-buildings/planning/planning-policy/spds/nitrogen-reduction-in-poole-harbour/> [Accessed 31 Aug. 2017].

Wild Purbeck Nature Improvement Area (2015). Conservation management of Purbeck's woodlands in the face of climate change. [online] Available at: [http://www.dorsetaonb.org.uk/assets/downloads/wild-purbeck/Wild\\_Purbeck-WOODLANDS.pdf](http://www.dorsetaonb.org.uk/assets/downloads/wild-purbeck/Wild_Purbeck-WOODLANDS.pdf) [Accessed 31 Aug. 2017].

## Emerging evidence and policies

Some of Purbeck District Council's Local Plan evidence base, as well as the policies within the Local Plan, are currently under review. At the time of writing (September 2017), the following documents are emerging:

- *Bere Regis and strategic road network transport modelling*: Further evidence being prepared as part of the review of the Council's Local Plan;
- *Eastern Dorset Strategic Housing Market Assessment update*: The Strategic Housing Market Assessment is being prepared as part of the review of the Council's Local Plan. The Assessment is likely to be finalised later this year. It will supersede the Eastern Dorset Strategic Housing Market Assessment Final Report published in October 2015;
- *Flood Risk and Surface Water Drainage Technical Overview – Wool Urban Extension*, February 2017 (unpublished). The report was prepared to provide an overview of the flood risk constraints relating to land being promoted for development around Wool.
- *Green belt review*: Further evidence being prepared as part of the review of the Council's Local Plan;
- *Lytchett Minster Flood Risk Study*, May 2017 (unpublished). The study and was prepared to help inform future planning decisions relating to Lytchett Minster.
- *Purbeck Green Infrastructure Strategy*. Further evidence being prepared as part of the review of the Council's Local Plan;
- *Sensitivity of the Area of Outstanding Natural Beauty landscape of Purbeck to housing development*: Further evidence being prepared as part of the review of the Council's Local Plan;
- *Strategic flood risk assessment (SFRA)*: Further evidence being prepared as part of the review of the Council's Local Plan. The SFRA is likely to be finalised and published later this year. The SFRA being drafted will replace the SFRA published in June 2016;
- *Swanage Green Infrastructure Strategy*. Published (September 2015) as a draft in conjunction with the consultation on the Swanage Local Plan and currently being updated; and
- *Viability updates*: Further evidence being prepared as part of the review of the Council's Local Plan.

In addition, the following Local Plan policies are being considered, as part of the Local Plan review:

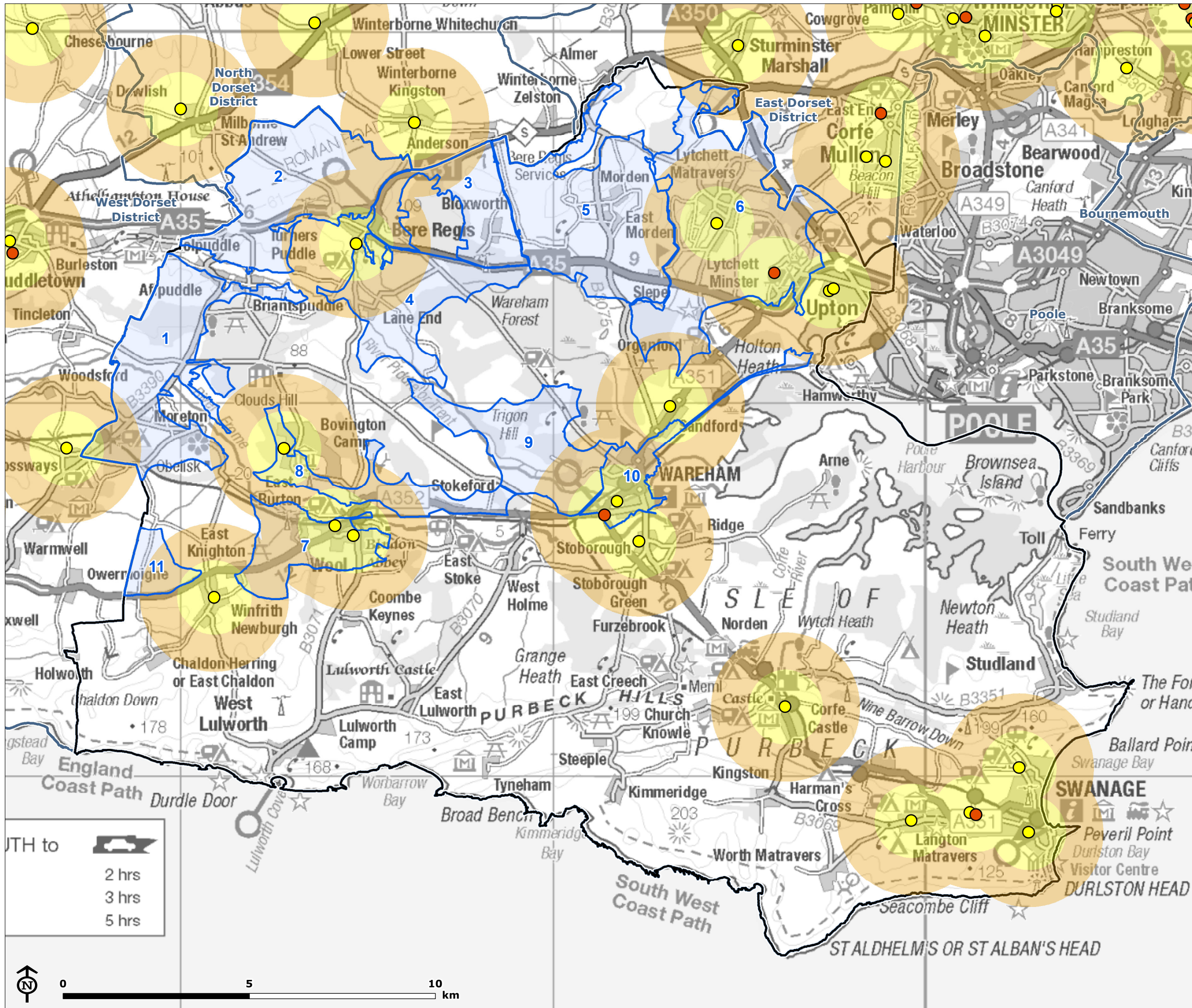
- *Policy CCMA - Coastal Change Management Areas*: new policy;
- *Policy FR – Flood Risk*: updated policy; and
- *Policy GP – Groundwater Protection*: updated policy.



## Appendix 3- List of infrastructure providers

Infrastructure	Organisation
Transport	Dorset County Council
	Highways England
	Gosouthcoast
Health	NHS Bournemouth and Poole
	NHS Property Services
	NHS Dorset Clinical Commissioning Group
	NHS Purbeck Locality Clinical Commissioning Group
	NHS Poole
	Adams Practice
Emergency Services – fire	Dorset Fire & Rescue
Emergency Services - police	Police
Utilities – waste water	Wessex Water
Utilities – drinking water	Wessex Water
Utilities – electricity	National Grid
Utilities – electricity	SSE
Utilities - gas	Southern Gas Network
Education	Dorset County Council
	Dorset County Council
	Dorset County Council
Waste and Recycling	Dorset County Council

**Appendix 4- Proximity of assessment parcels to infrastructure and services**

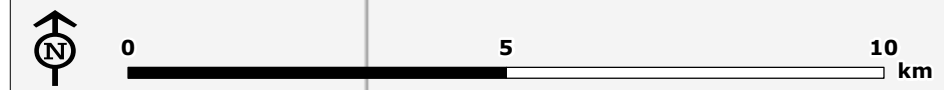


**PURBECK**  
Environmental and Infrastructure Capacity

- Education**
- Purbeck District Council
  - Other Local Authority boundary
  - Primary school
  - Secondary school
- Buffer distance from educational services**
- 1km
  - 2km

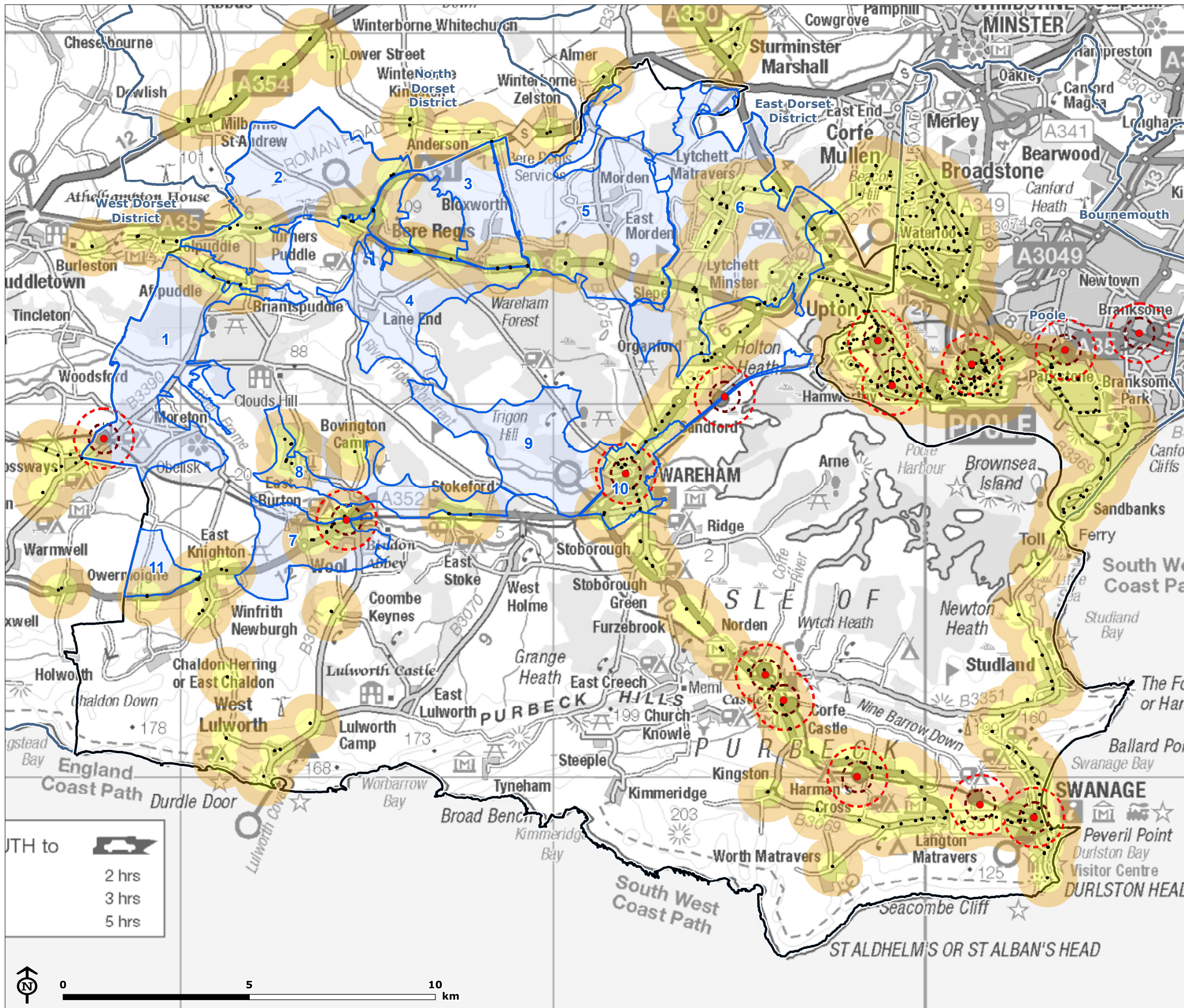
DRIVE TIME to

- 2 hrs
- 3 hrs
- 5 hrs



Map Scale @ A3: 1:100,000



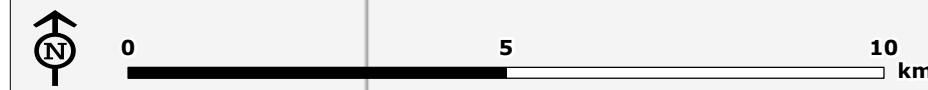


**PURBECK**  
Environmental and  
Infrastructure Capacity

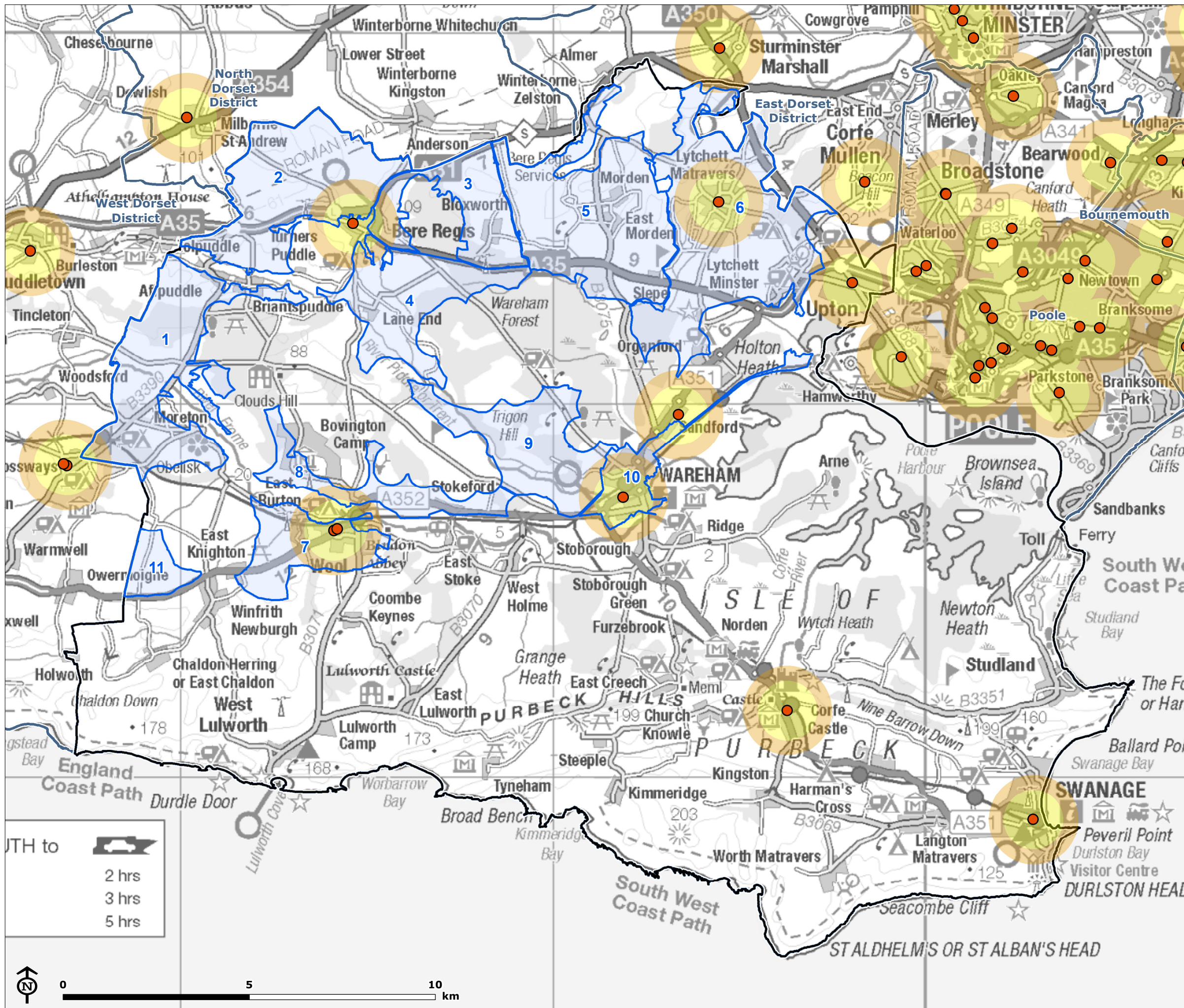
- Transport**
- Purbeck District Council
  - Other Local Authority boundary
  - Proposed assessment parcel
  - Train station
  - Bus stop
- Buffer distance from train stops**
- 400m
  - 800m
- Buffer distance from bus stops**
- 400m
  - 800m

DRIVE TIME to

- 2 hrs
- 3 hrs
- 5 hrs



Map Scale @ A3: 1:100,000



**PURBECK**  
Environmental and Infrastructure Capacity

- Health**
- Purbeck District Council
  - Other Local Authority boundary
  - Proposed assessment parcel
  - Doctors surgery
- Buffer distance from doctors surgeries**
- 800m
  - 1.2km

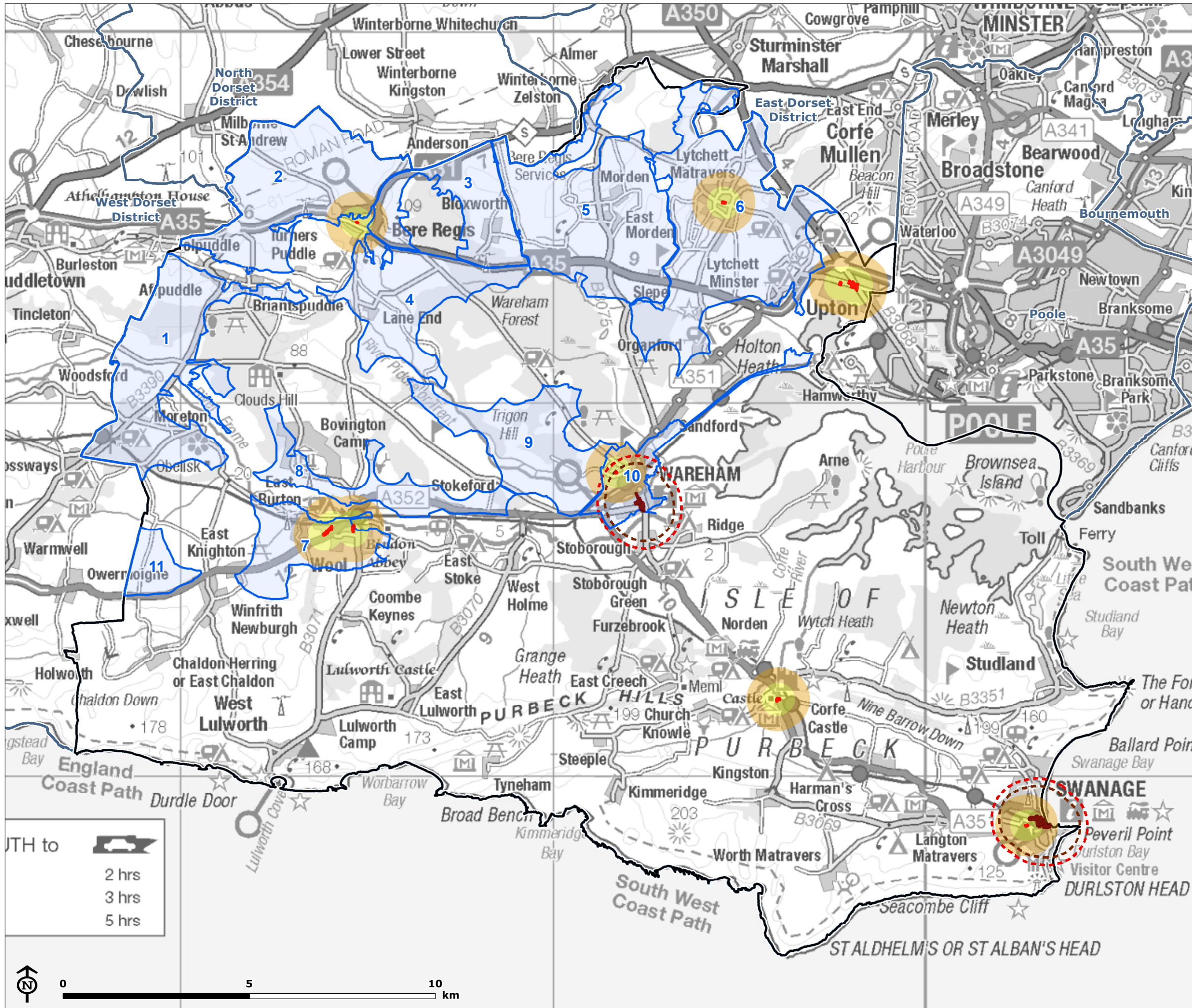
Distance to

- 2 hrs
- 3 hrs
- 5 hrs



Map Scale @ A3: 1:100,000

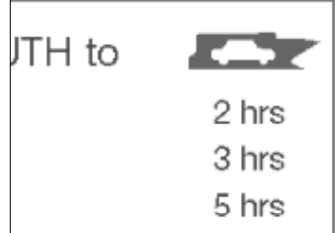




**PURBECK**  
Environmental and  
Infrastructure Capacity

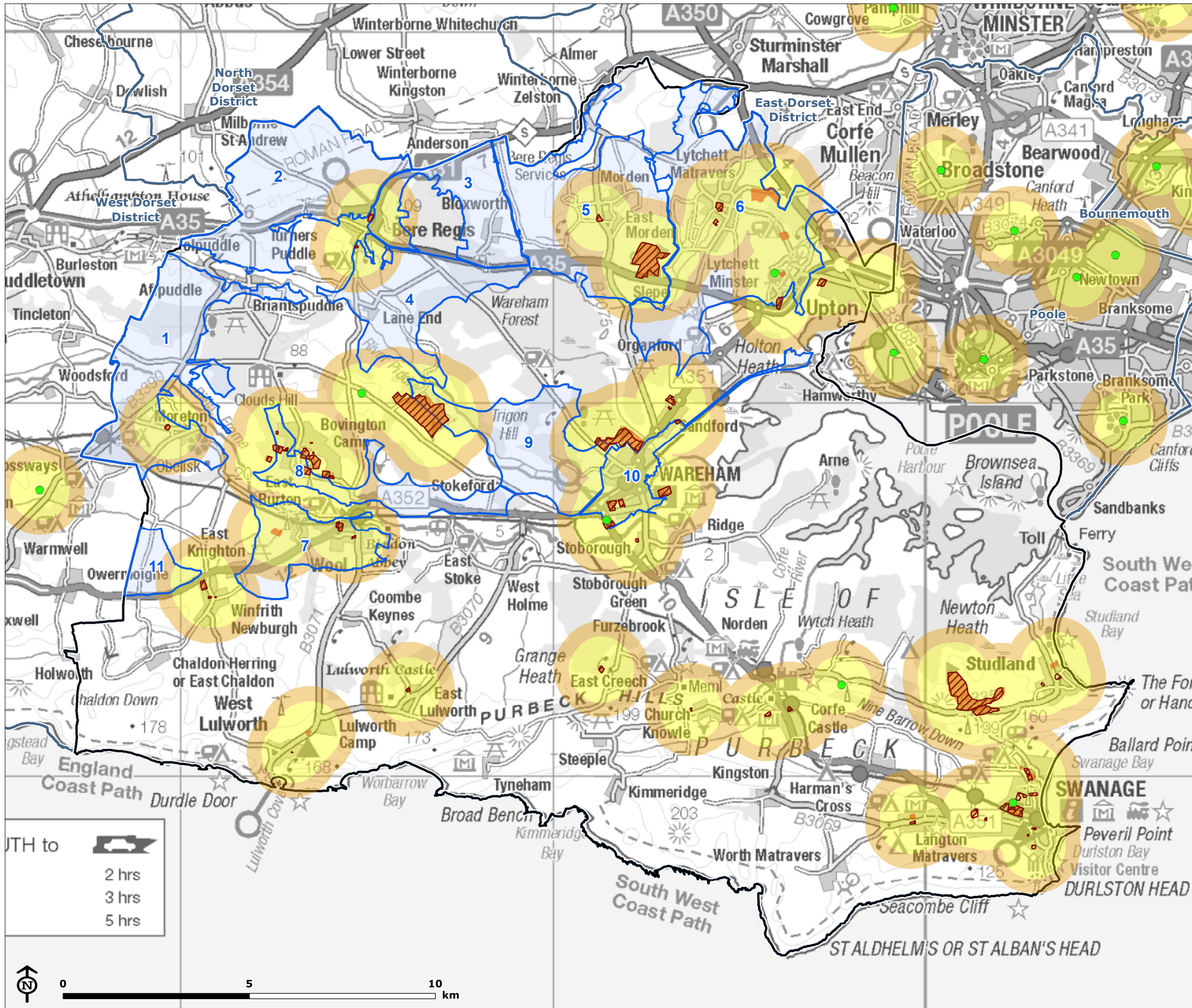
**Retail**

- Purbeck District Council
- Other Local Authority boundary
- Proposed assessment parcel
- Local centre
- Town centre
- Distance buffer from town centre**
- 800m
- 1km
- Distance buffer from local centre**
- 400m
- 800m



Map Scale @ A3: 1:100,000



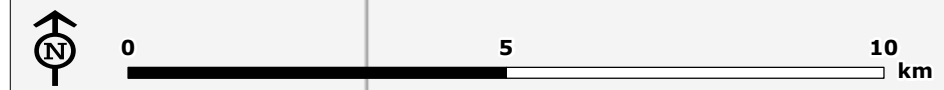


**PURBECK**  
Environmental and  
Infrastructure Capacity

- Leisure**
- Purbeck District Council
  - Other Local Authority boundary
  - Proposed assessment parcel
  - Leisure centre
  - Outdoor sport
  - Sports pitch
- Buffer distance from leisure facilities, sport facilities and outdoor sport pitches**
- 800m
  - 1.2km

DRIVE TIME to

- 2 hrs
- 3 hrs
- 5 hrs



Map Scale @ A3: 1:100,000

