

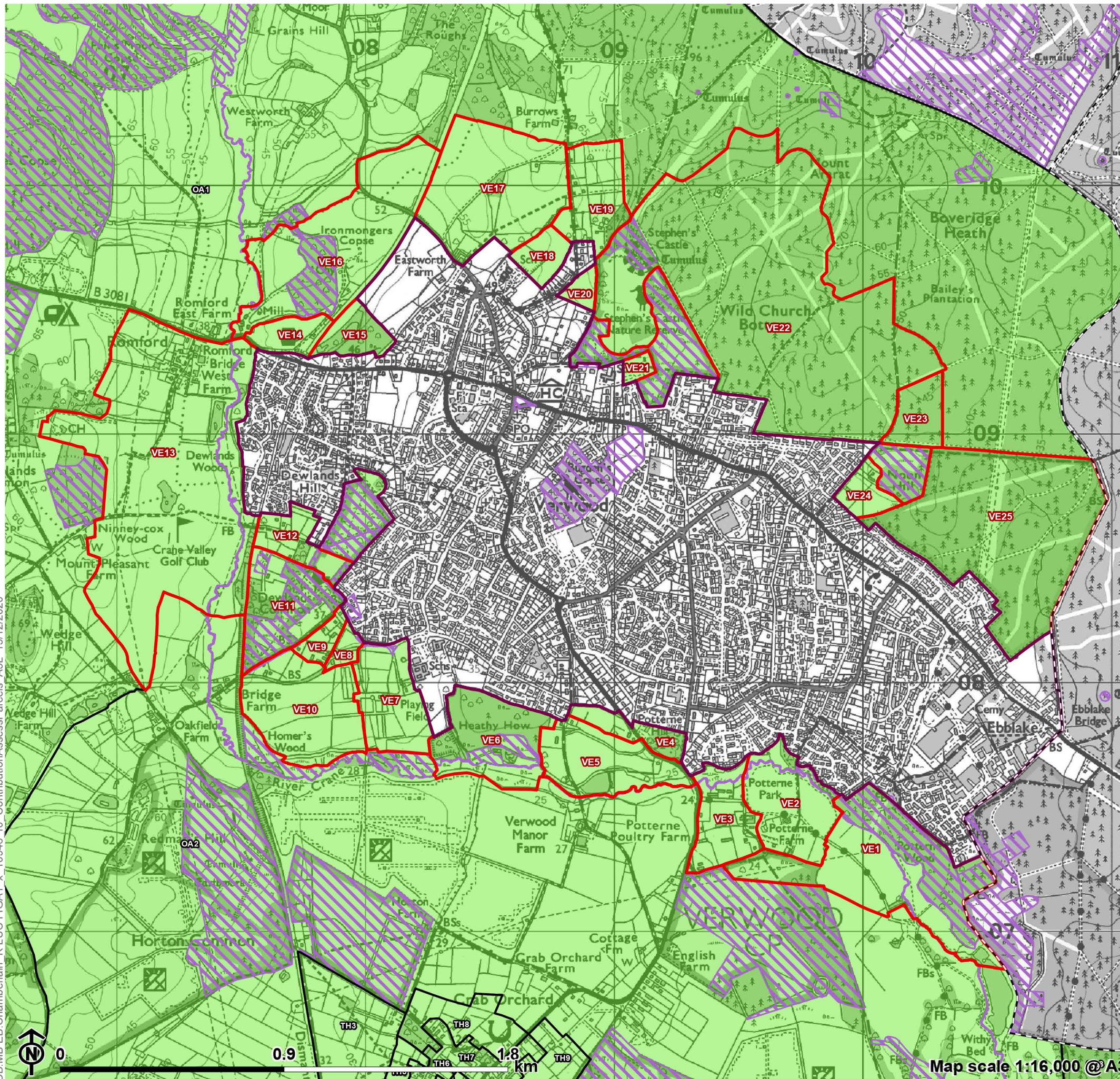
Appendix A

**Maps Showing Contribution
Assessment (for each purpose)
for Parcels around Inset
Settlements:
Verwood**

Figure A1.19

**Contribution Assessment Parcels:
Verwood**

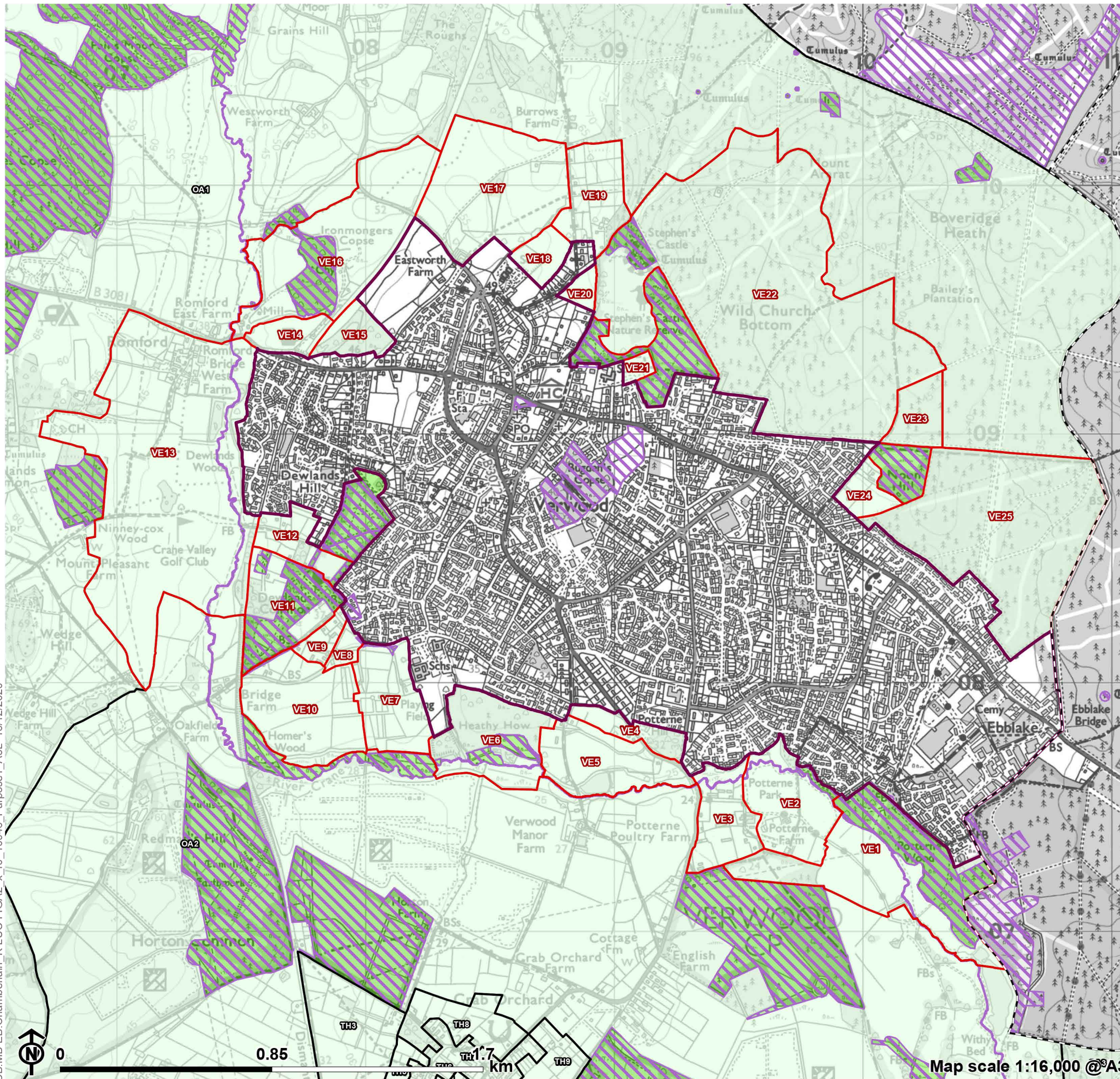
- Local Authority boundary
- Inset area
- Green Belt
- ▭ Verwood parcel
- ▭ Parcel
- ▨ Absolute constraint(s)



CB:MB:EB:Chamberlain_K.LUC FIGA1_x_10946_r0_ContributionAssessParcels_A3L_15/12/2020

Figure A2.19

**Green Belt Purpose 1 Contribution:
Verwood**

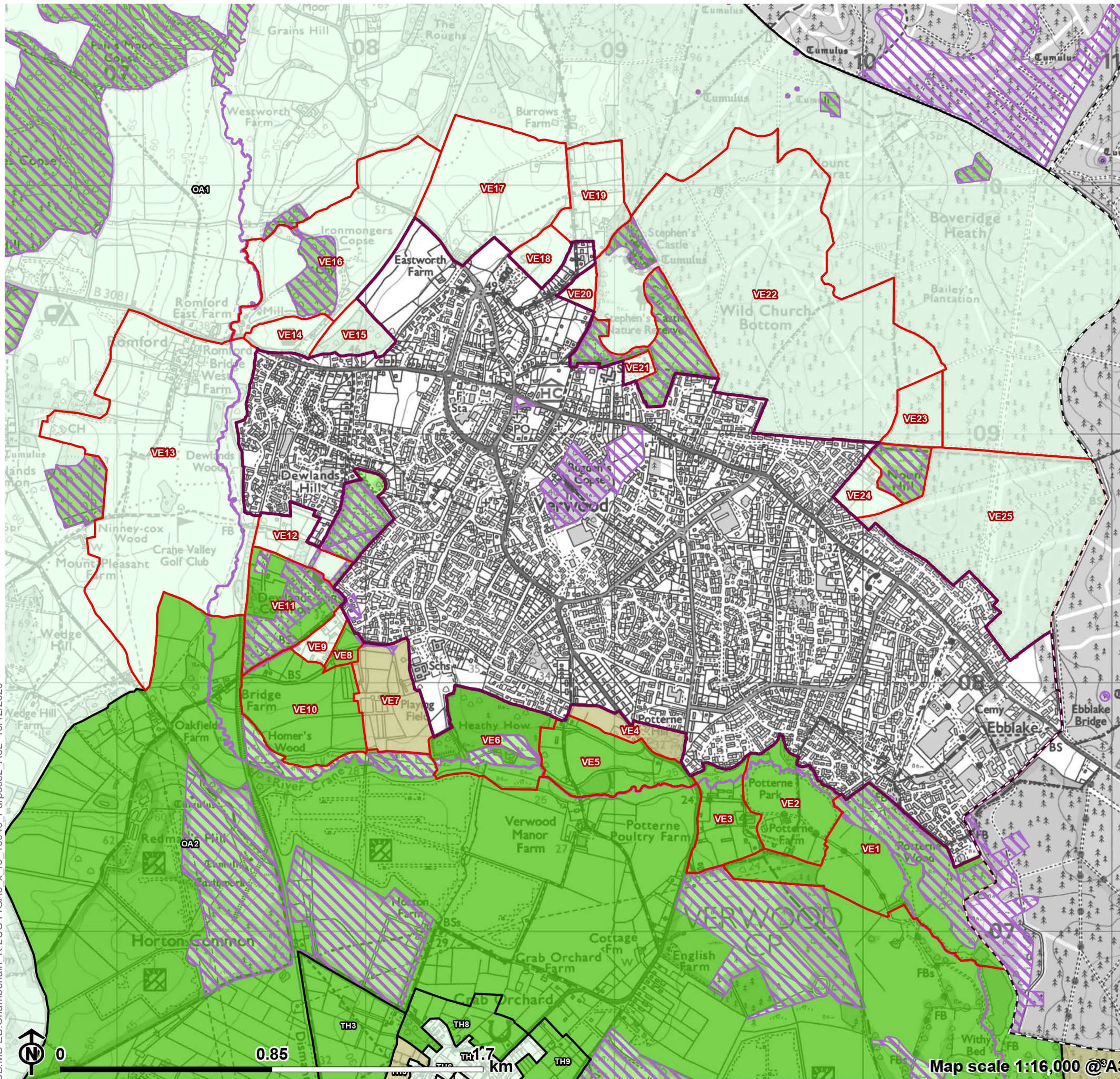


- - - Local Authority boundary
 - Inset area
 - Green Belt not assessed
 - Absolute constraint(s)
 - No openness
 - Verwood parcel
 - Parcel
- Purpose 1 contribution**
- Strong
 - Relatively strong
 - Moderate
 - Relatively weak
 - Weak/No

CB:MB:EB:Chamberlain_K LUC FIGA2_x_r0_10946_Purpose1_A3L_15/12/2020

Figure A3.19

**Green Belt Purpose 2 Contribution:
Verwood**

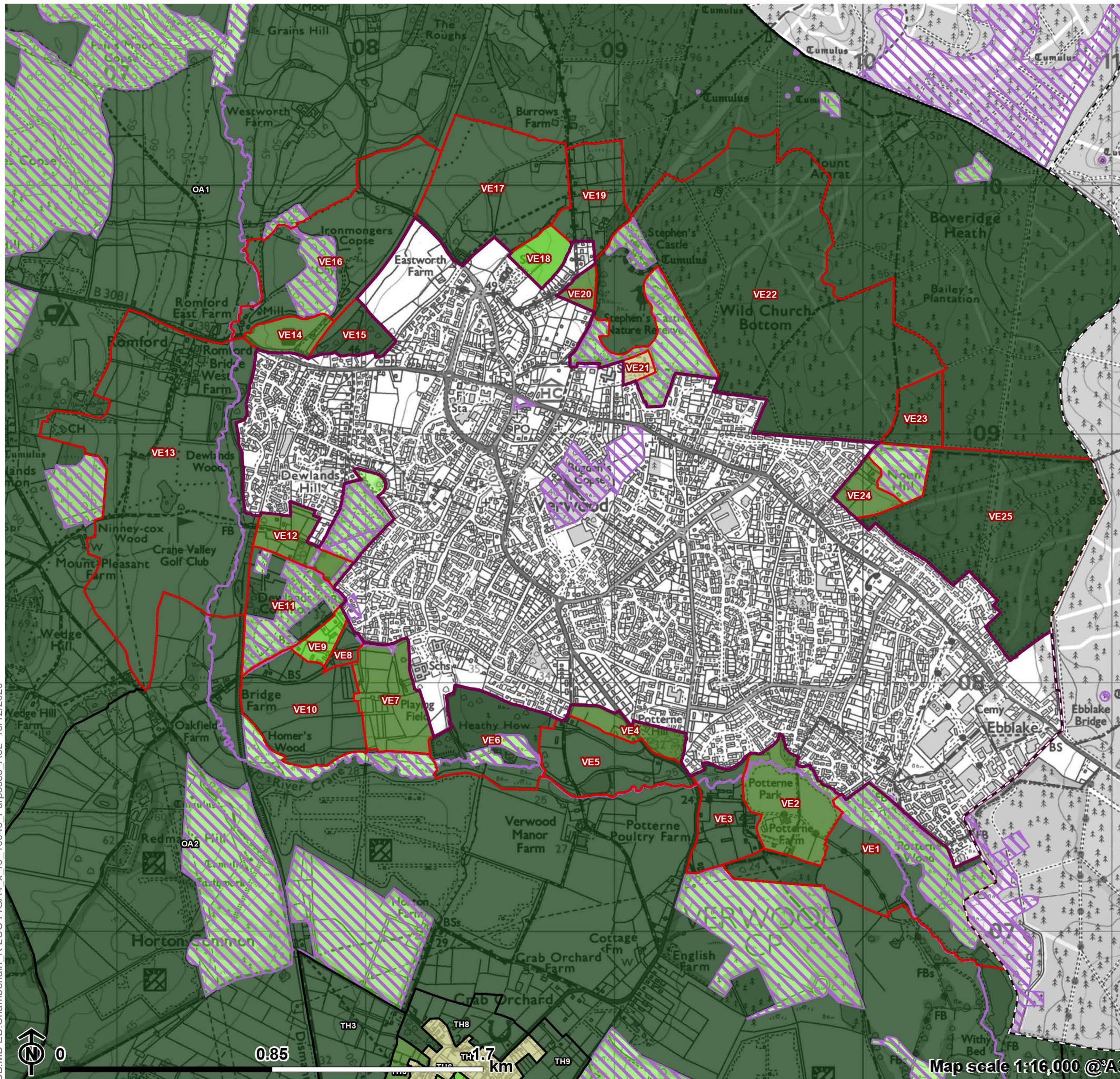


- Local Authority boundary
 - Inset area
 - Green Belt not assessed
 - Absolute constraint(s)
 - No openness
 - Verwood parcel
 - Parcel
- Purpose 2 contribution**
- Strong
 - Relatively strong
 - Moderate
 - Relatively weak
 - Weak/No

CB:MB:EB:Chamberlain_K LUC FIGA3_x_r0_10946_Purpose2_A3L_15/12/2020

Figure A4.19

**Green Belt Purpose 3 Contribution:
Verwood**



- Local Authority boundary
- Inset area
- Green Belt not assessed
- ▨ Absolute constraint(s)
- ▨ No openness
- ▭ Verwood parcel
- ▭ Parcel

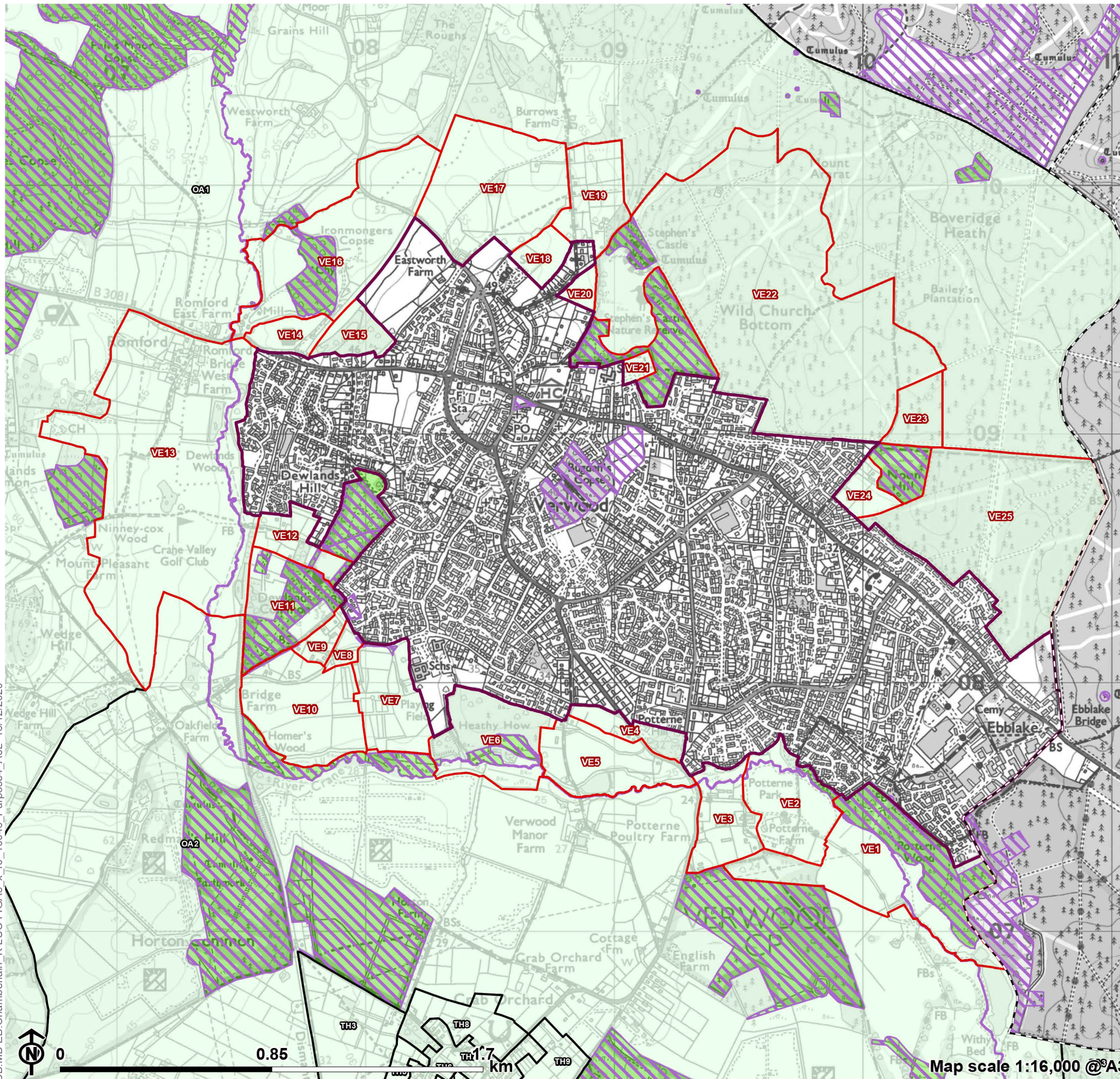
Purpose 3 contribution

- Strong
- Relatively strong
- Moderate
- Relatively weak
- Weak/No

CB:MB:EB:Chamberlain_K.LUC FIGA4_x_r0_10946_Purpose3_A3L_15/12/2020

Figure A5.19

**Green Belt Purpose 4 Contribution:
Verwood**



- Local Authority boundary
 - Inset area
 - Green Belt not assessed
 - Absolute constraint(s)
 - No openness
 - Verwood parcel
 - Parcel
- Purpose 4 contribution**
- Strong
 - Relatively strong
 - Moderate
 - Relatively weak
 - Weak/No

CB:MB:EB:Chamberlain_K LUC FIGA5_x_r0_10946_Purpose4_A3L_15/12/2020