

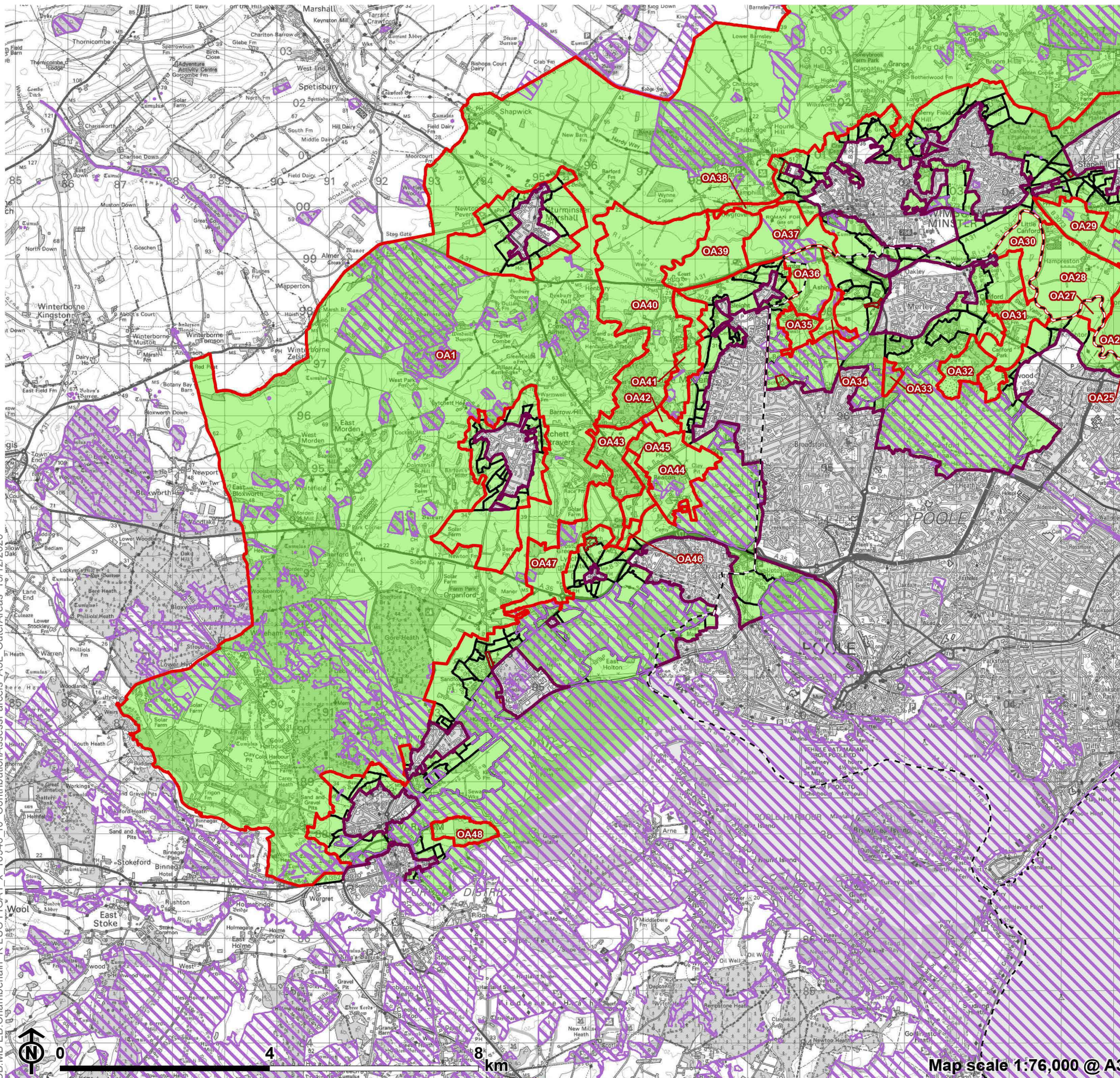
Appendix A

**Maps Showing Contribution
Assessment (for each purpose)
for Parcels around Inset
Settlements:
Outer Areas (Southwest)**

Figure A1.23

**Contribution Assessment Parcels:
Outer Areas (Southwest)**

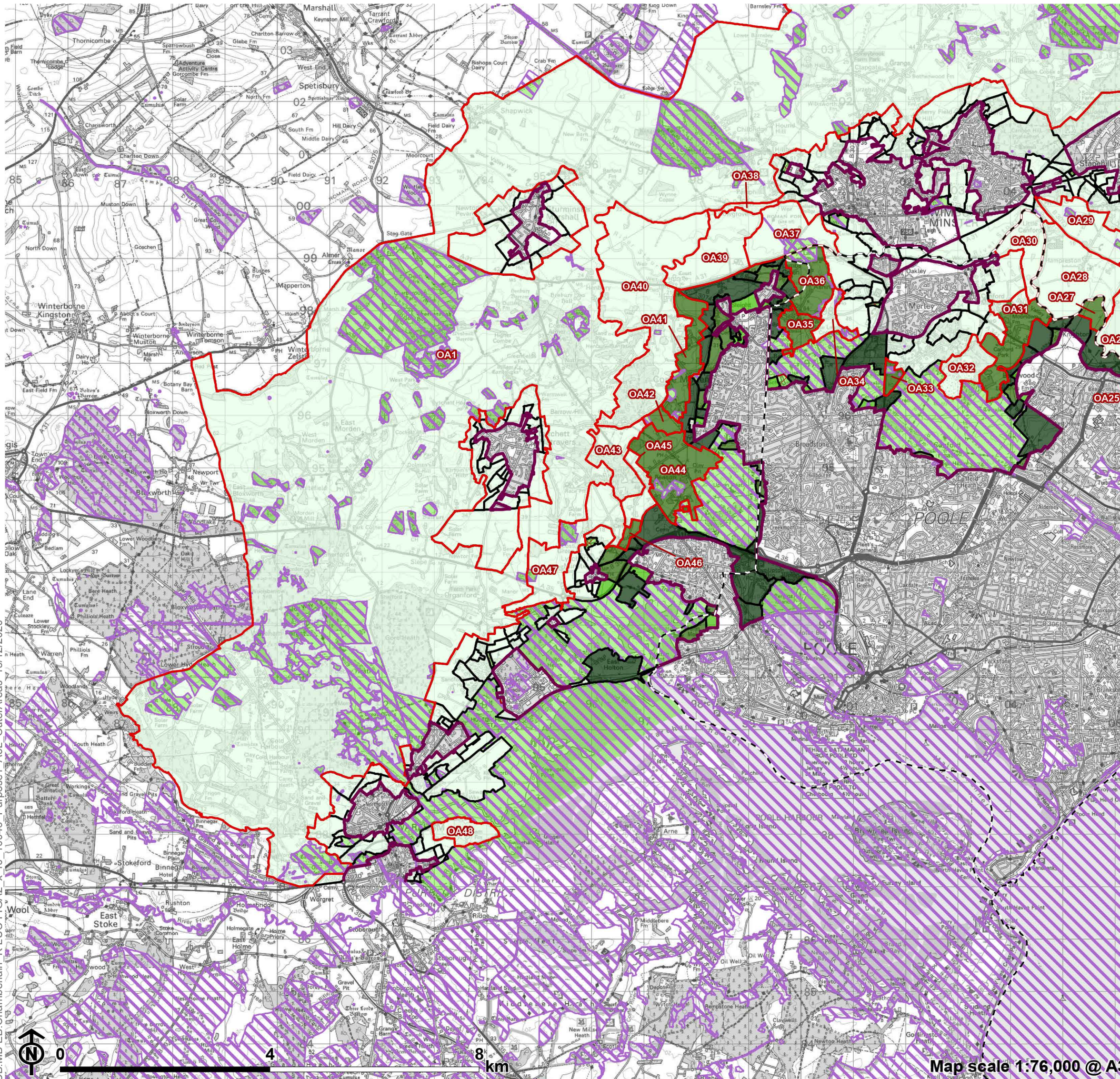
- Local Authority boundary
- Inset area
- Green Belt
- Outer Area
- Parcel
- No openness
- Absolute constraint(s)



CB:MB:EB:Chamberlain_K LUC FIGA1_x_10946_r0 ContributionAssessParcels_A3L_OuterAreas_15/12/2020

Figure A2.23

**Green Belt Purpose 1 Contribution:
Outer Areas (Southwest)**



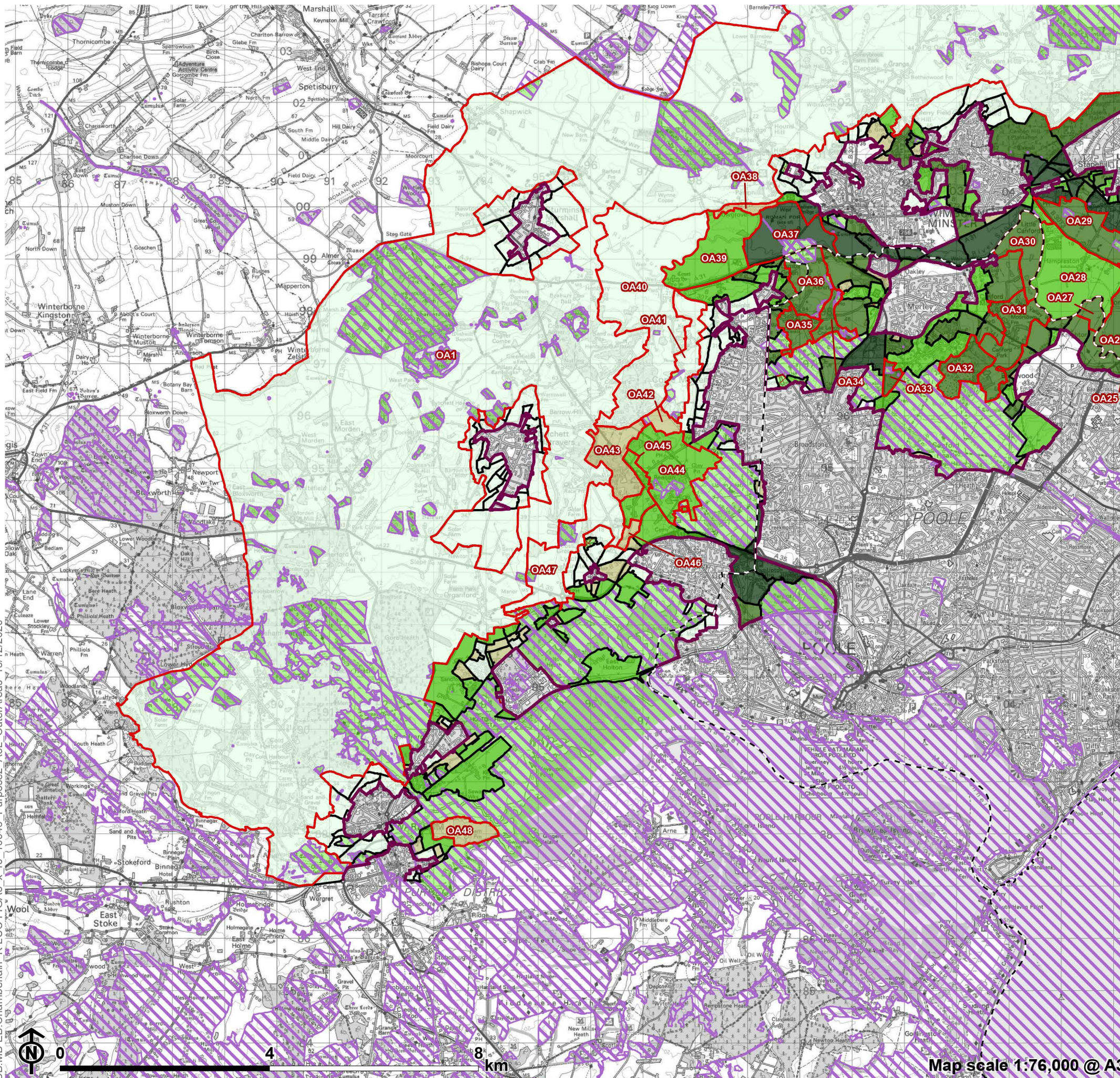
- Local Authority boundary
 - Inset area
 - Green Belt not assessed
 - Diagonal hatching Absolute constraint(s)
 - Diagonal hatching No openness
 - Red outline Outer Area
 - Black outline Parcel
- Purpose 1 contribution**
- Dark green Strong
 - Medium green Relatively strong
 - Light green Moderate
 - Yellowish green Relatively weak
 - White Weak/No

CB:MB:EB:Chamberlain_K LUC FIGA2_x_r0_10946_Purpose1_A3L_OuterAreas_15/12/2020

Figure A3.23

**Green Belt Purpose 2 Contribution:
Outer Areas (Southwest)**

- Local Authority boundary
 - Inset area
 - Green Belt not assessed
 - Diagonal lines Absolute constraint(s)
 - Diagonal lines No openness
 - Red outline Outer Area
 - Black outline Parcel
- Purpose 2 contribution**
- Dark green Strong
 - Medium green Relatively strong
 - Light green Moderate
 - Yellowish green Relatively weak
 - White Weak/No



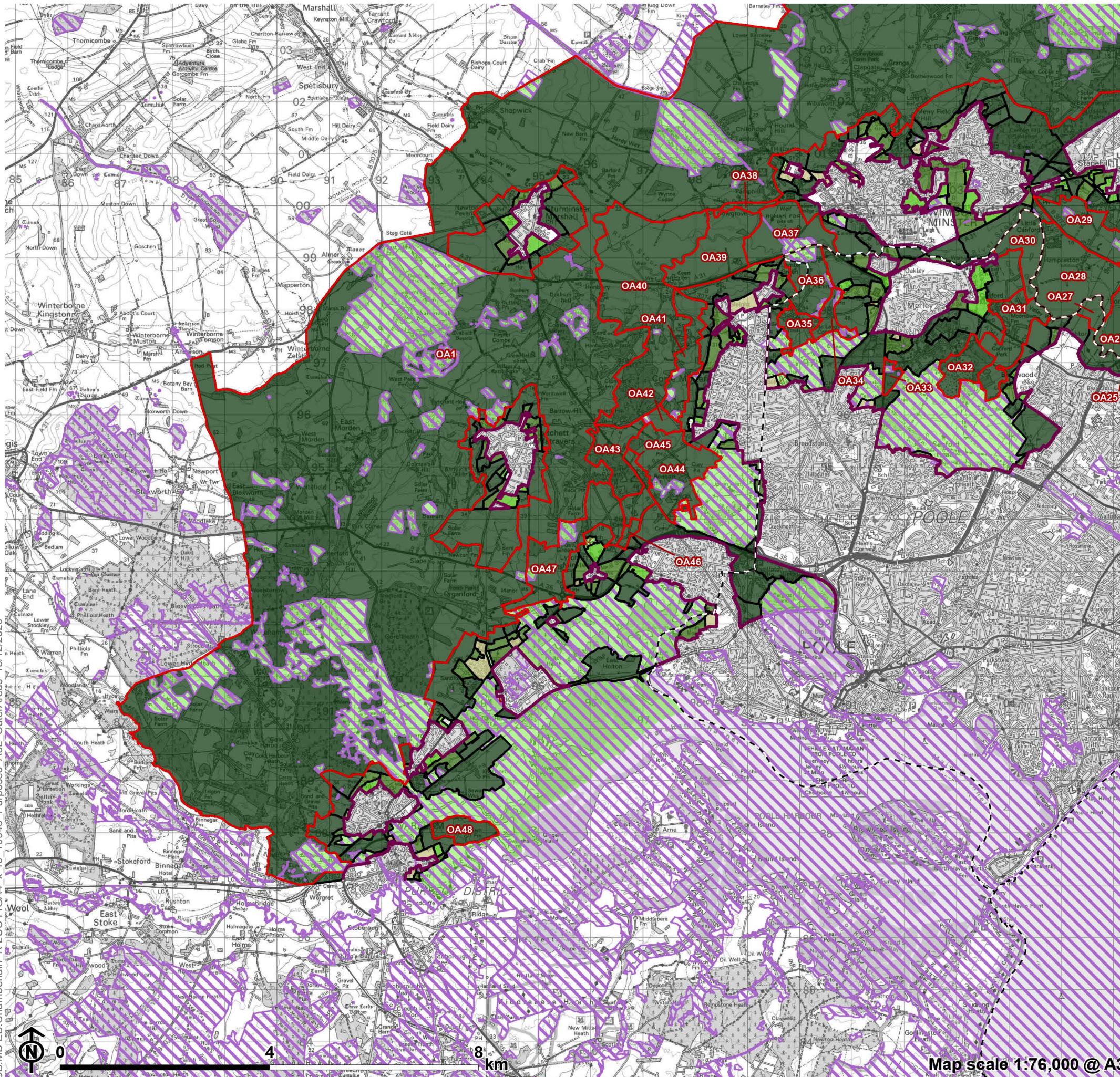
CB:MB:EB:Chamberlain_K LUC FIGA3_x_r0_10946 Purpose2_A3L_OuterAreas_15/12/2020



Figure A4.23

**Green Belt Purpose 3 Contribution:
Outer Areas (Southwest)**

- Local Authority boundary
 - Inset area
 - Green Belt not assessed
 - Diagonal lines Absolute constraint(s)
 - Diagonal lines No openness
 - Red outline Outer Area
 - Black outline Parcel
- Purpose 3 contribution**
- Dark Green Strong
 - Medium Green Relatively strong
 - Light Green Moderate
 - Yellowish Green Relatively weak
 - White Weak/No

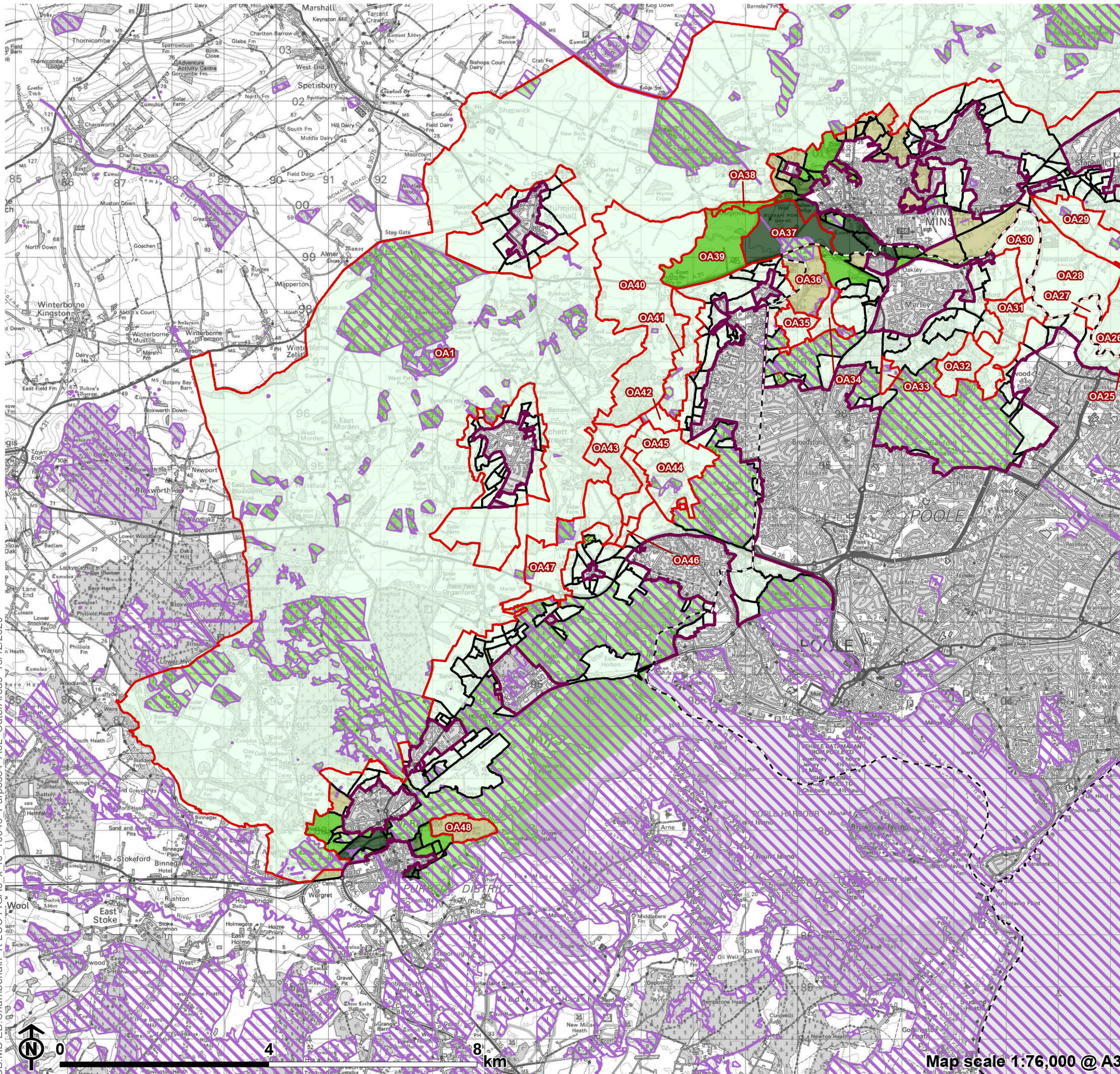


CB:MB:EB:Chamberlain_K LUC FIGA4_x_r0_10946 Purpose3_A3L_OuterAreas_15/12/2020

Figure A5.23

**Green Belt Purpose 4 Contribution:
Outer Areas (Southwest)**

- Local Authority boundary
 - Inset area
 - Green Belt not assessed
 - ▨ Absolute constraint(s)
 - ▨ No openness
 - Outer Area
 - Parcel
- Purpose 4 contribution**
- Strong
 - Relatively strong
 - Moderate
 - Relatively weak
 - Weak/No



CB:MB:EB:Chamberlain_K LUC FIGA5_x_r0_10946 Purpose4_A3L OuterAreas_15/12/2020