

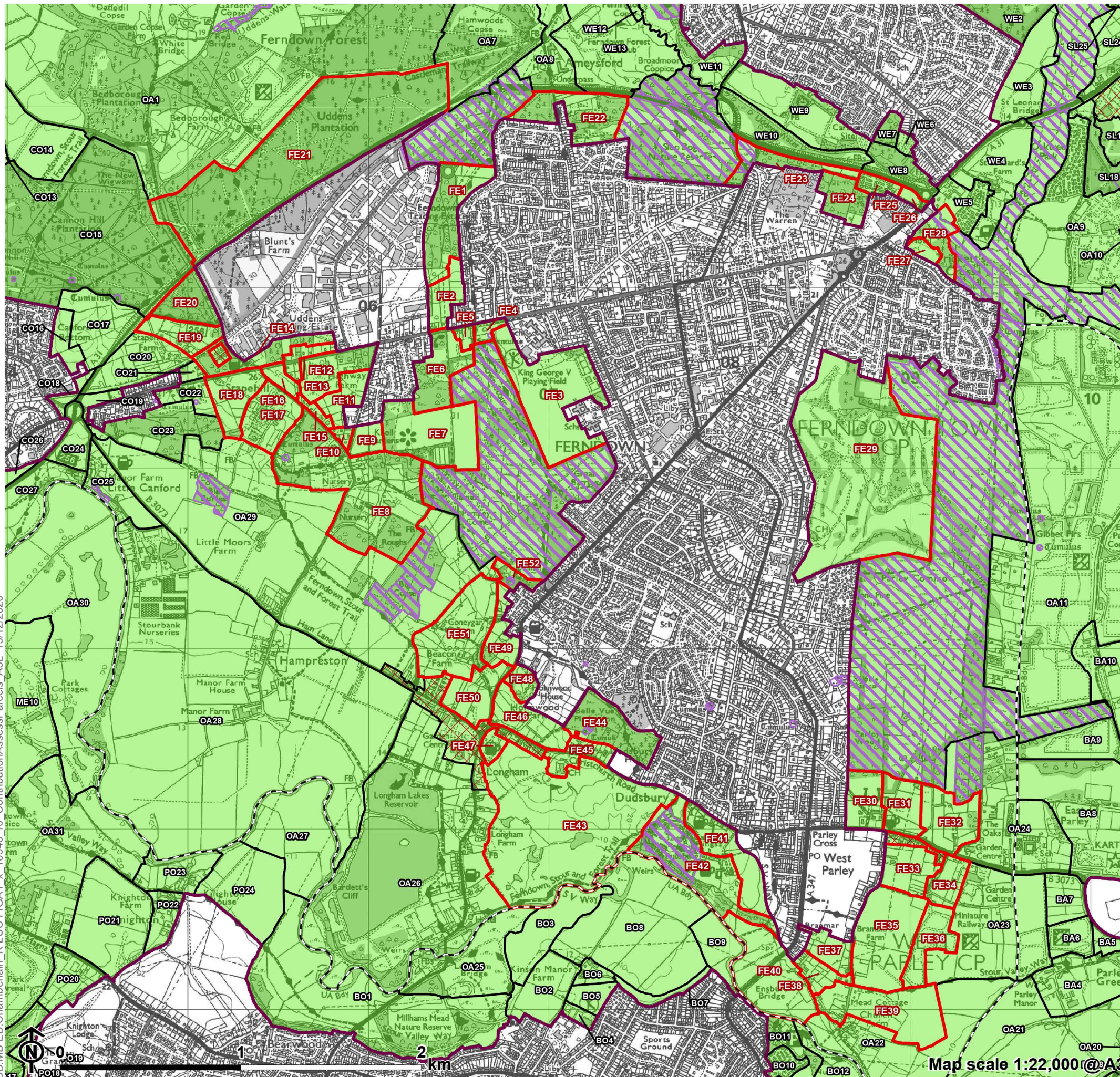
# **Appendix A**

**Maps Showing Contribution  
Assessment (for each purpose)  
for Parcels around Inset  
Settlements:  
Ferndown & West Parley**



**Figure A1.8**

**Contribution Assessment Parcels:  
Ferndown & West Parley**



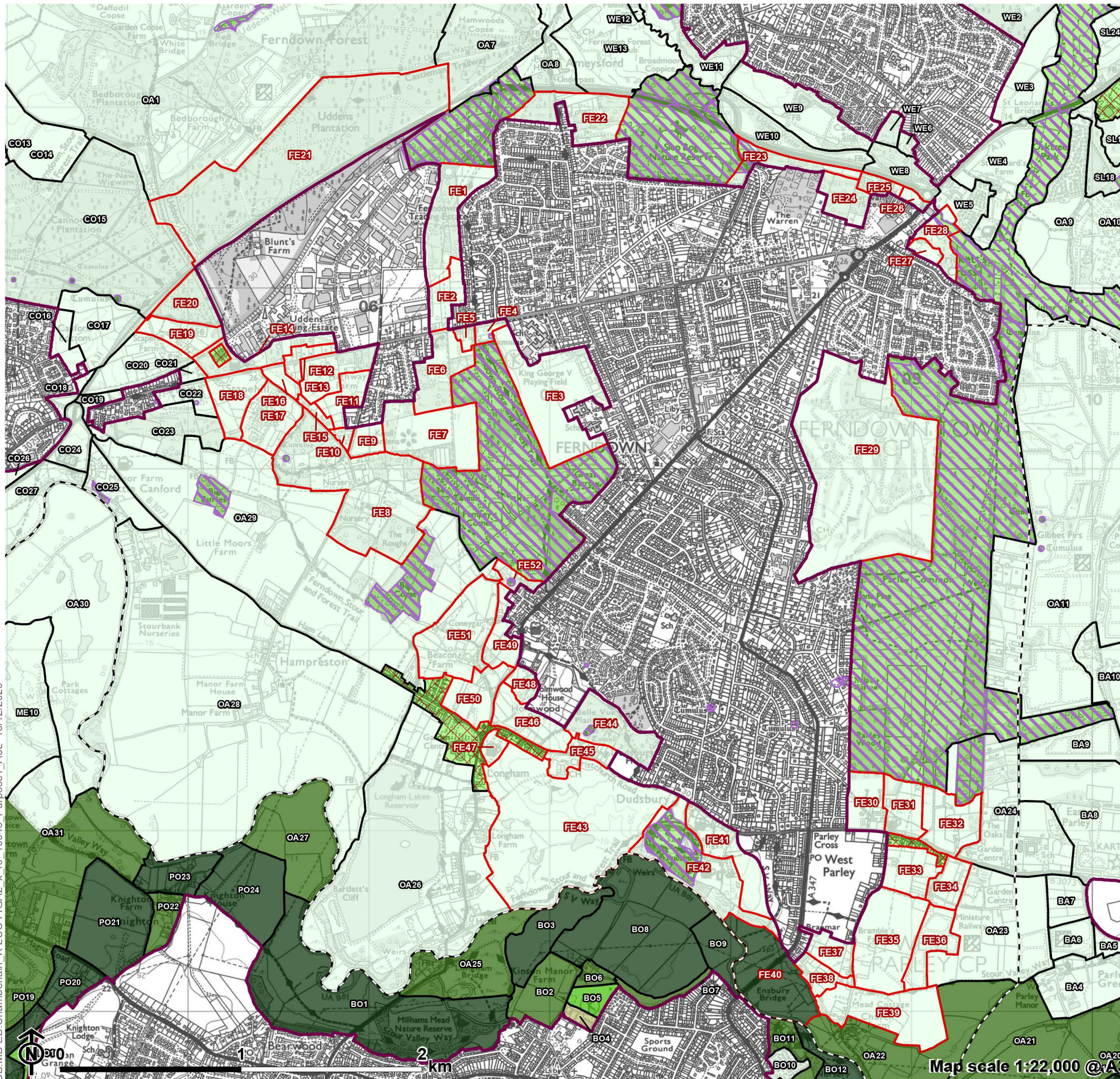
- Local Authority boundary
- Inset area
- Green Belt
- Ferndown & West Parley parcel
- Parcel
- No openness
- Absolute constraint(s)

CB:MB:EB:Chamberlain\_K LUC FIGA1 x 10946\_r0 ContributionAssessParcels\_A3L 15/12/2020



**Figure A2.8**

**Green Belt Purpose 1 Contribution:  
Ferndown & West Parley**



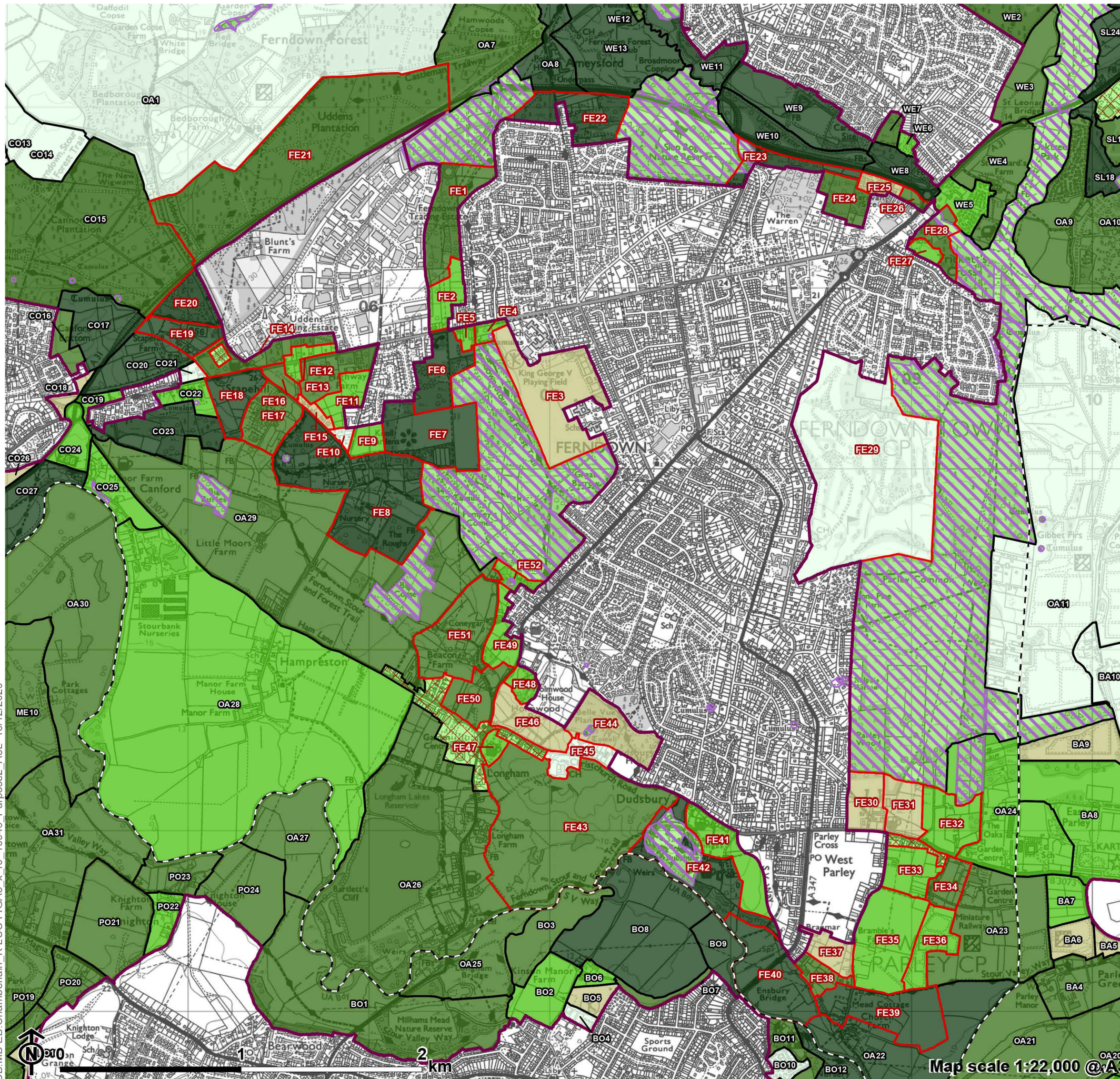
- Local Authority boundary
  - Inset area
  - Green Belt not assessed
  - Diagonal lines Absolute constraint(s)
  - Red outline No openness
  - Red outline Ferndown & West Parley parcel
  - Black outline Parcel
- Purpose 1 contribution**
- Dark Green Strong
  - Medium Green Relatively strong
  - Light Green Moderate
  - Yellow Relatively weak
  - White Weak/No

CB:MB:EB:Chamberlain\_K.LUC FIGA2\_x\_r0\_10946\_Purpose1\_A3L\_15/12/2020



**Figure A3.8**

**Green Belt Purpose 2 Contribution:  
Ferndown & West Parley**



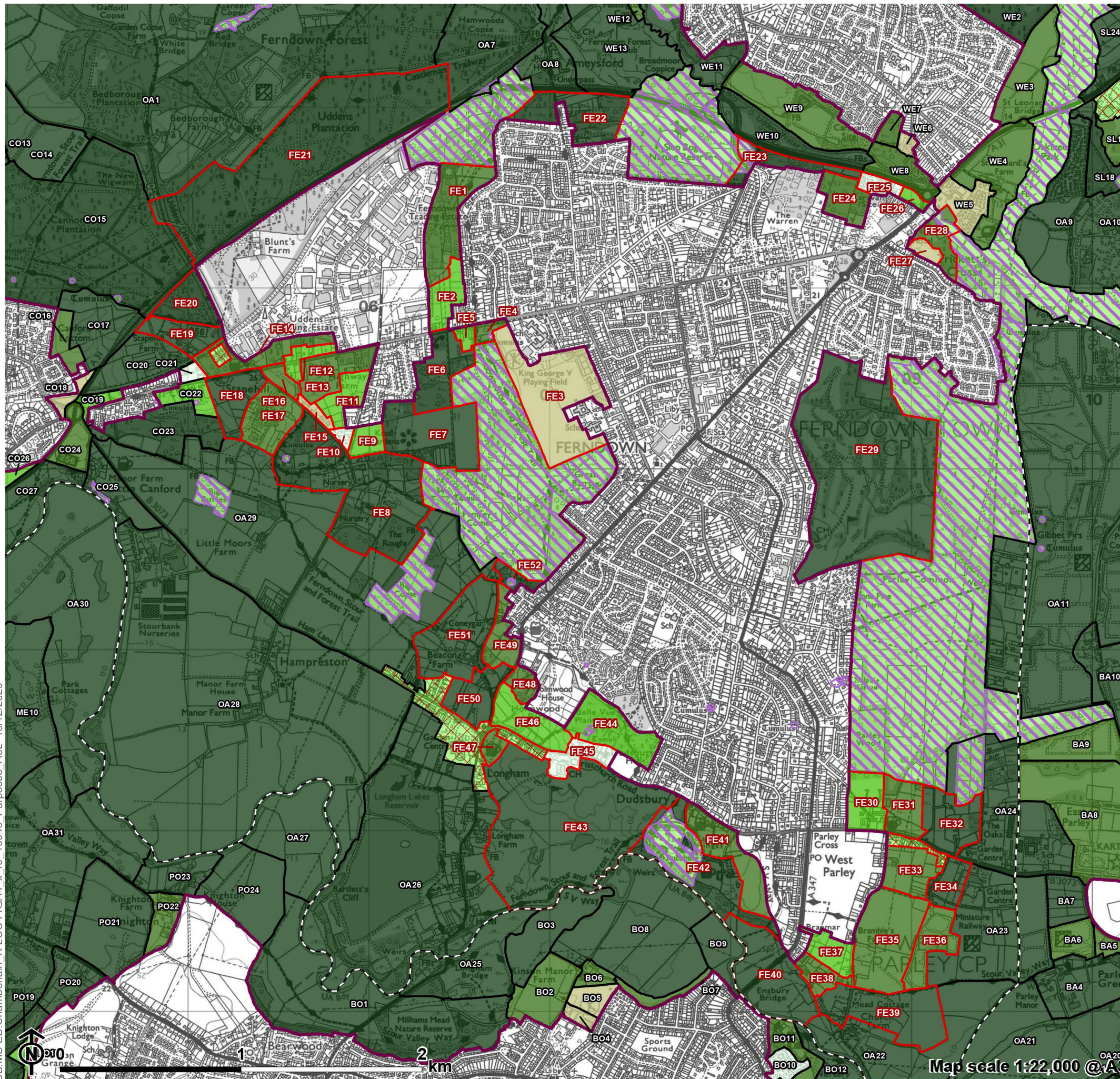
- Local Authority boundary
  - Inset area
  - Green Belt not assessed
  - Absolute constraint(s)
  - No openness
  - Ferndown & West Parley parcel
  - Parcel
- Purpose 2 contribution**
- Strong
  - Relatively strong
  - Moderate
  - Relatively weak
  - Weak/No

CB:MB:EB:Chamberlain\_K LUC FIGA3\_x\_r0\_10946\_Purpose2\_A3L\_15/12/2020



**Figure A4.8**

**Green Belt Purpose 3 Contribution:  
Ferndown & West Parley**



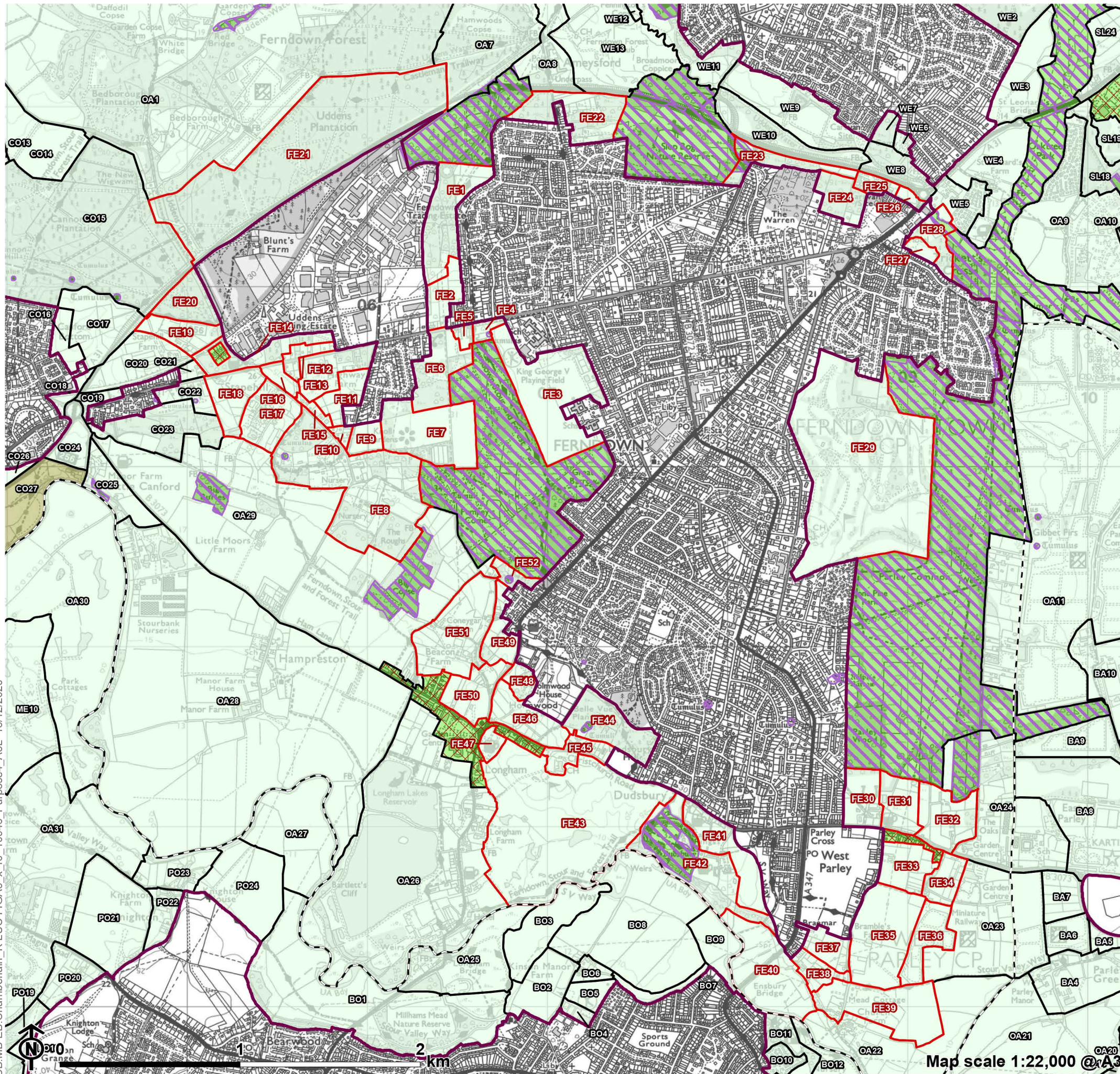
- Local Authority boundary
  - Inset area
  - Green Belt not assessed
  - Absolute constraint(s)
  - No openness
  - Ferndown & West Parley parcel
  - Parcel
- Purpose 3 contribution**
- Strong
  - Relatively strong
  - Moderate
  - Relatively weak
  - Weak/No

CB:MB:EB:Chamberlain\_K.LUC.FIG.A4.x\_r0\_10946\_Purpose3\_A3L\_15/12/2020



**Figure A5.8**

**Green Belt Purpose 4 Contribution:  
Ferndown & West Parley**



- Local Authority boundary
  - Inset area
  - Green Belt not assessed
  - Absolute constraint(s)
  - No openness
  - Ferndown & West Parley parcel
  - Parcel
- Purpose 4 contribution**
- Strong
  - Relatively strong
  - Moderate
  - Relatively weak
  - Weak/No

CB:MB:EB:Chamberlain\_K LUC FIGA5\_x\_r0\_10946\_Purpose4\_A3L\_15/12/2020