

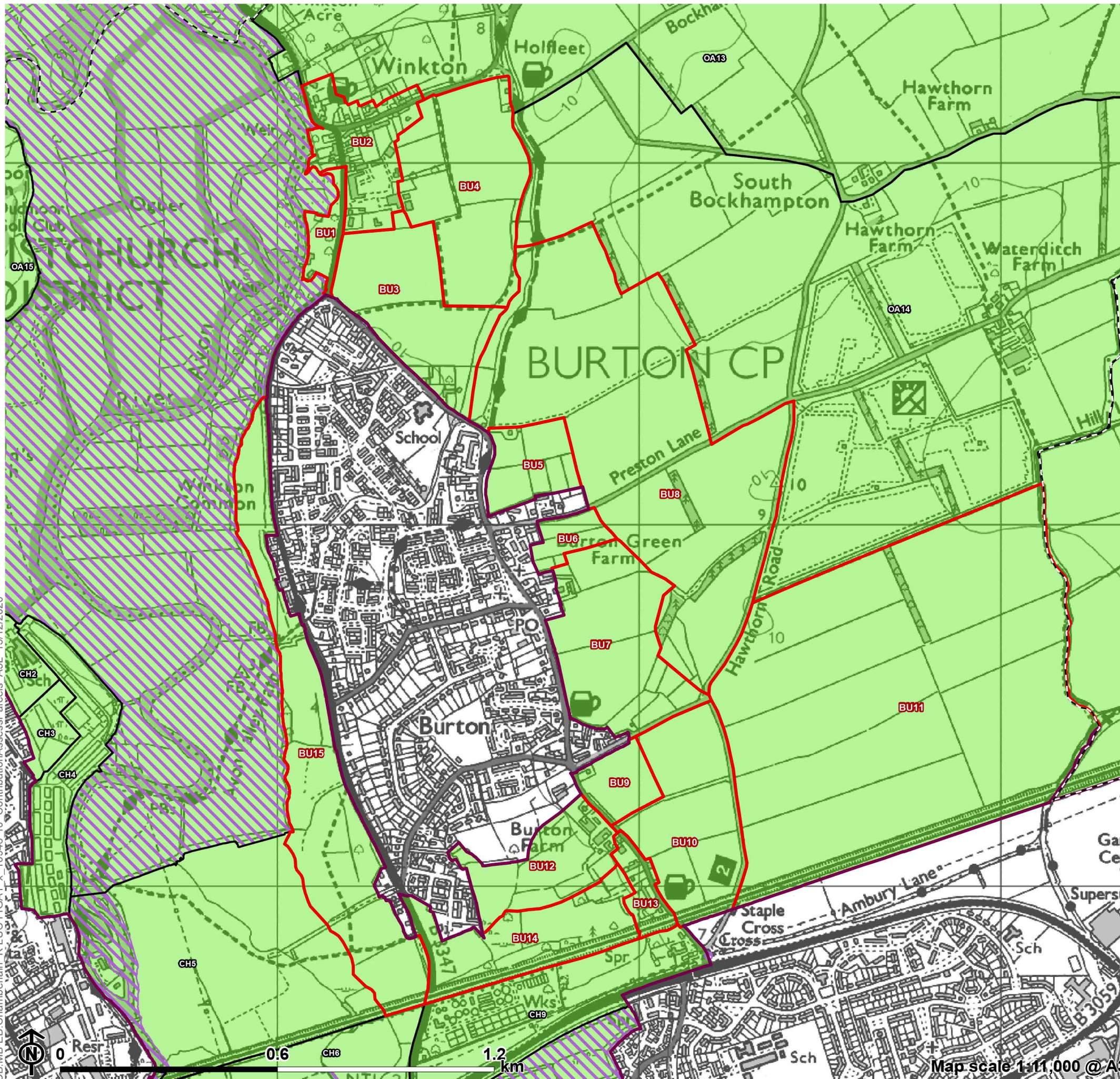
Appendix A

**Maps Showing Contribution
Assessment (for each purpose)
for Parcels around Inset
Settlements:
Burton**

Figure A1.4

**Contribution Assessment Parcels:
Burton**

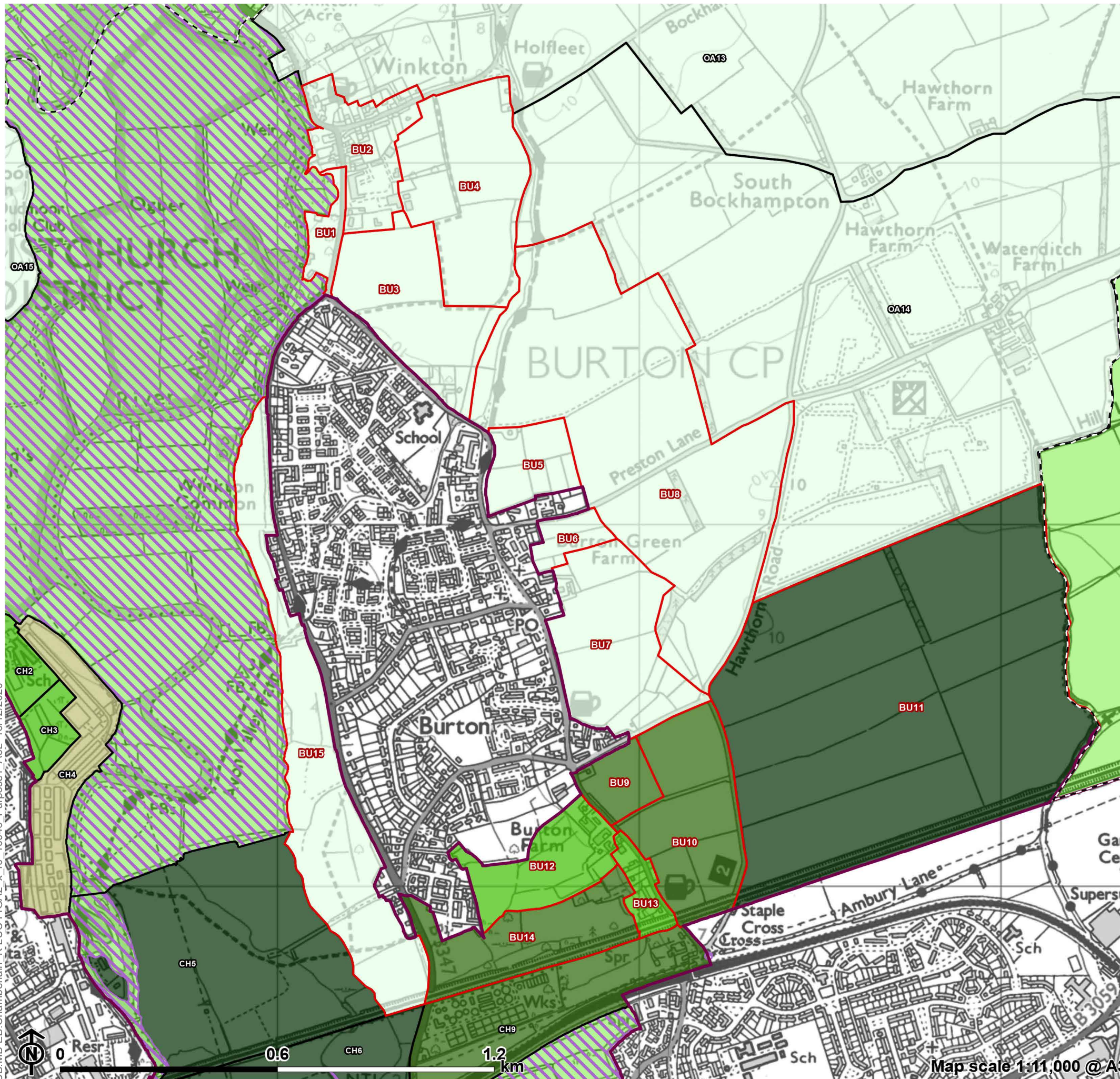
- Local Authority boundary
- Inset area
- Green Belt
- Red outline Burton parcel
- Parcel
- Diagonal lines Absolute constraint(s)



CB:MB:EB:Chamberlain_K\LUC\FIGA1_x_10946_r0_ContributionAssessParcels_A3L_15/12/2020

Figure A2.4

**Green Belt Purpose 1 Contribution:
Burton**

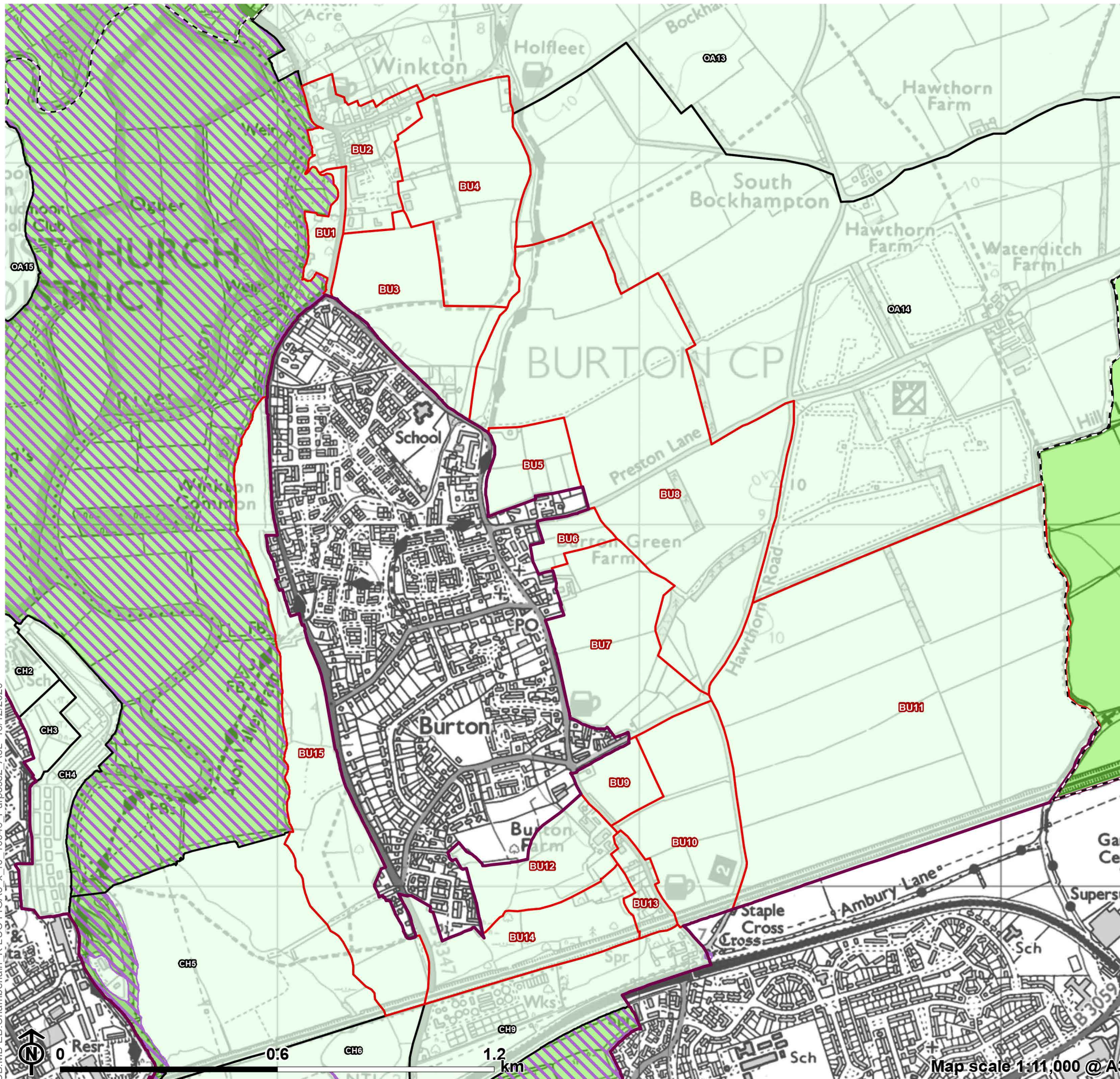


- Local Authority boundary
 - Inset area
 - Green Belt not assessed
 - ▨ Absolute constraint(s)
 - ▨ No openness
 - ▭ Burton parcel
 - ▭ Parcel
- Purpose 1 contribution**
- Strong
 - Relatively strong
 - Moderate
 - Relatively weak
 - Weak/No

CB:MB EB:Chamberlain K:LUC FIGA2_x_r0_10946_Purpose1_A3L_15/12/2020

Figure A3.4

**Green Belt Purpose 2 Contribution:
Burton**



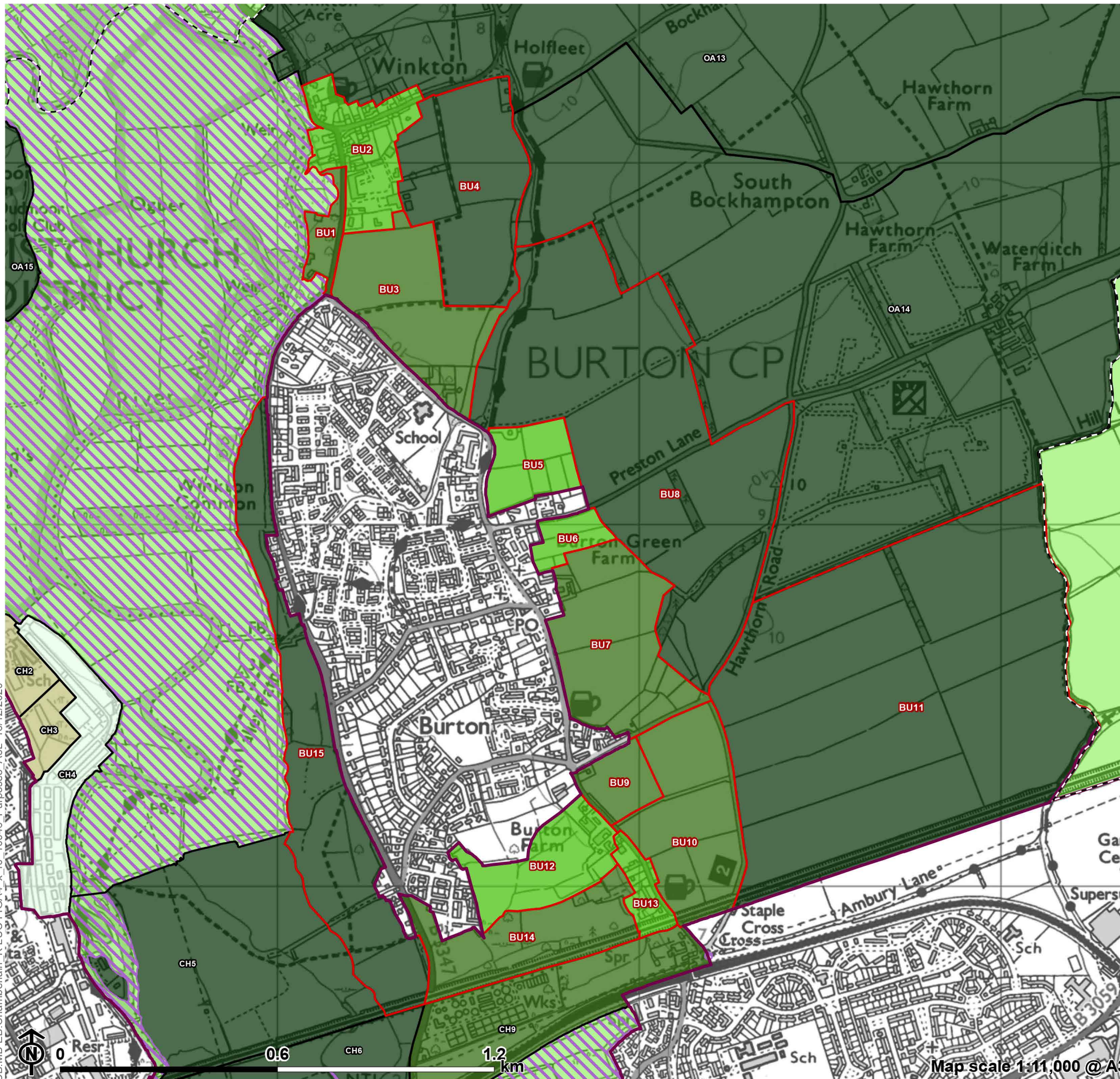
- Local Authority boundary
 - Inset area
 - Green Belt not assessed
 - ▨ Absolute constraint(s)
 - ▨ No openness
 - ▭ Burton parcel
 - ▭ Parcel
- Purpose 2 contribution**
- Strong
 - Relatively strong
 - Moderate
 - Relatively weak
 - Weak/No

CB:MB:EB:Chamberlain_K.LUC.FIGA3_x_r0_10946_Purpose2_A3L_15/12/2020

0 0.6 1.2 km
Map scale 1:11,000 @ A3

Figure A4.4

**Green Belt Purpose 3 Contribution:
Burton**

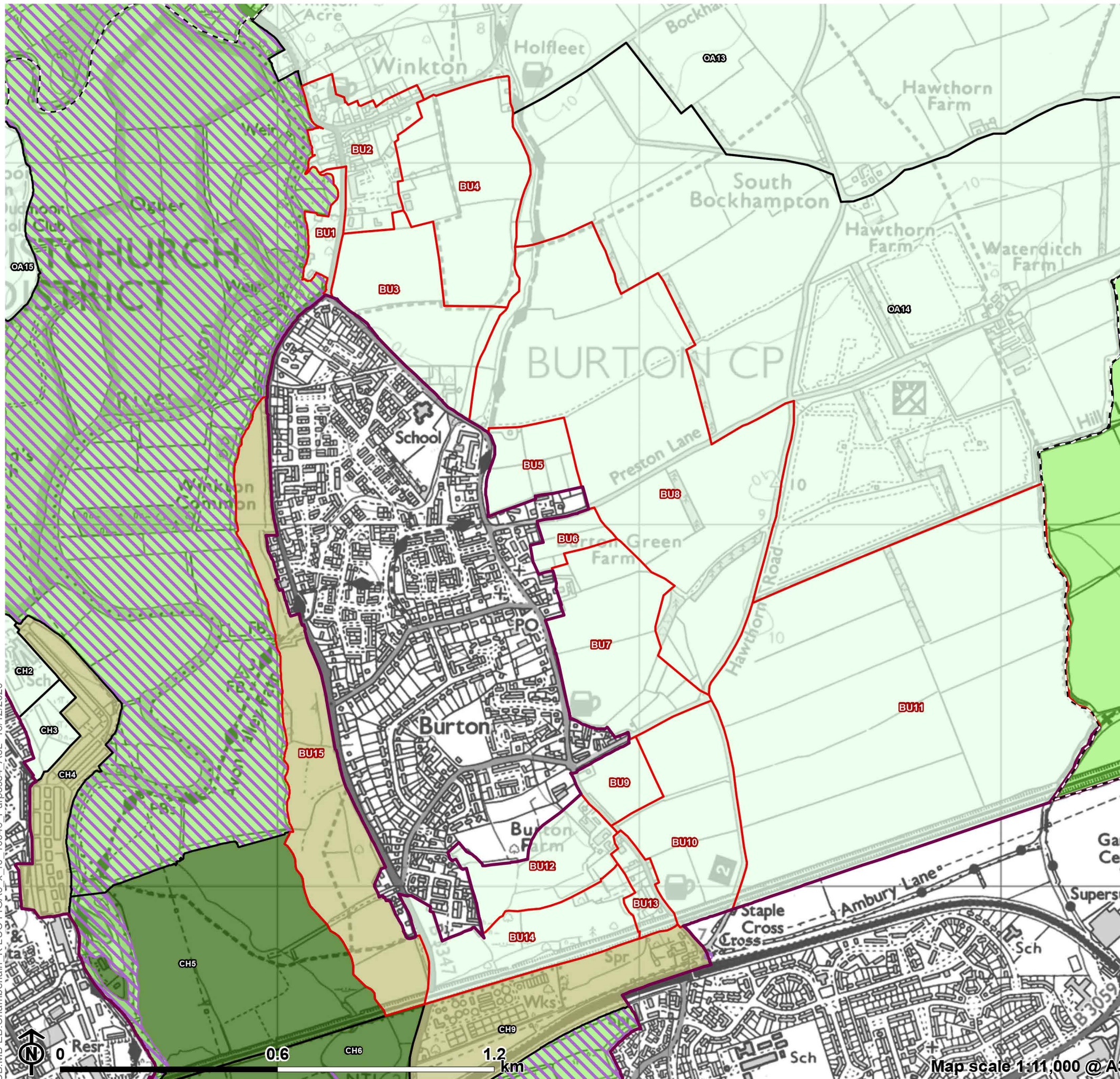


- - - - Local Authority boundary
 - Inset area
 - Green Belt not assessed
 - Absolute constraint(s)
 - No openness
 - Burton parcel
 - Parcel
- Purpose 3 contribution**
- Strong
 - Relatively strong
 - Moderate
 - Relatively weak
 - Weak/No

CB:MB EB:Chamberlain K:LUC FIGA4_x_r0_10946_Purpose3_A3L_15/12/2020

Figure A5.4

**Green Belt Purpose 4 Contribution:
Burton**



- Local Authority boundary
 - Inset area
 - Green Belt not assessed
 - Diagonal hatching Absolute constraint(s)
 - Cross-hatch No openness
 - Red outline Burton parcel
 - Black outline Parcel
- Purpose 4 contribution**
- Dark green Strong
 - Medium green Relatively strong
 - Light green Moderate
 - Tan Relatively weak
 - Pale green Weak/No

CB:MB EB:Chamberlain K:LUC FIGA5_x_r0_10946_Purpose4_A3L_15/12/2020