

Bournemouth, Dorset & Poole Waste Plan Examination

Statement of Common Ground between the Waste Planning Authority and Hampshire County Council.

1. Geographical coverage

This statement of common ground covers the administrative areas of:

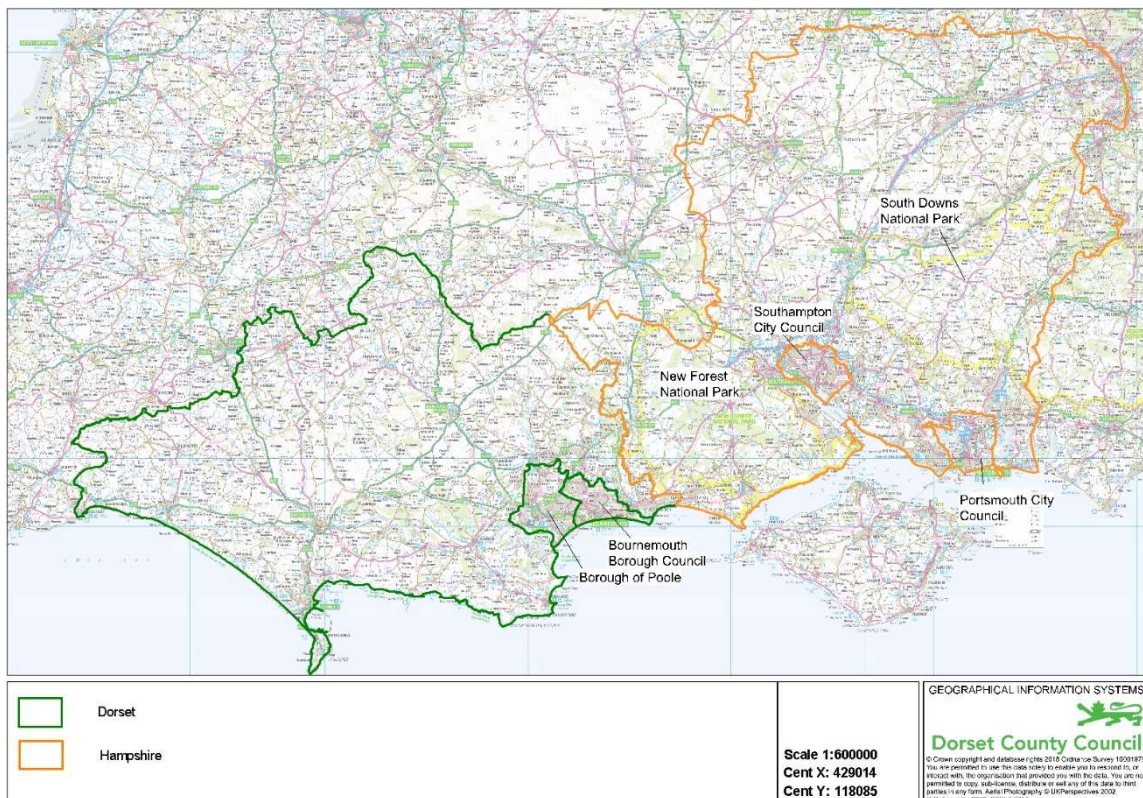
- Dorset County Council, Borough of Poole & Bournemouth Borough Council
- Hampshire County Council, Southampton City Council, Portsmouth City Council, New Forest National Park Authority & South Downs National Park Authority (where it falls within Hampshire's boundary)

Dorset County Council has a service level agreement to prepare minerals and waste planning policy on behalf of Bournemouth and Poole councils.

Hampshire County Council prepares minerals and waste planning policy on behalf of Southampton City Council, Portsmouth City Council, the New Forest National Park Authority and the South Downs National Park Authority (where it falls within Hampshire's boundary).

Figure 1 shows the administrative areas covered by this statement.

Figure 1



2. Strategic matters addressed

This statement covers the strategic matter of the cross-boundary movement of waste between the counties of Dorset and Hampshire.

3. Agreement on strategic matters

Dorset County Council¹ and Hampshire County Council² waste planning authorities have maintained a good working relationship throughout the preparation of their respective waste plans.

Both waste planning authorities acknowledge Article 16 of the revised Waste Framework Directive, which requires member states to establish a network of disposal and recovery facilities to move towards the principles of self-sufficiency and proximity, taking account of geographical circumstances or the need for specialised installations for certain types of waste.

As such, whilst acknowledging the need for the plan making process to consider the waste hierarchy, self-sufficiency and proximity principles, both waste planning authorities note the need to be flexible to take into account the way markets exist and function in different geographies. Waste needs may change over time and new technologies may come forward; meaning that for the provision of waste management capacity may need to serve a market that may transcend planning authority boundaries.

Dorset County Council has assessed cross boundary movements of waste in order to gain a good understanding of how the different waste streams are currently managed and to identify any strategic cross-boundary matters. Movements of waste between Dorset and Hampshire are considered a strategic cross-boundary matter in accordance with the National Planning Policy Framework paragraph 178/156. Dorset County Council invited Hampshire County Council to comment on this specifically in July 2013 and January 2017. In relation to Hampshire, the Bournemouth, Dorset & Poole Waste Plan only includes in its forecasts continued movements to Blue Haze landfill site up to 2020 and Marchwood energy from waste facility up to 2021, in line with Dorset Waste Partnership's waste management contracts.

Hampshire County Council agrees with the incorporation of these future cross boundary movements in the Bournemouth, Dorset & Poole Waste Plan's forecasts.

The Bournemouth, Dorset & Poole Waste Plan seeks to achieve net self-sufficiency in the management of non-hazardous and inert waste, in line with national policy, and makes sufficient provision to achieve this. Nonetheless, it is expected that some cross-boundary movements to and from neighbouring waste planning authorities will continue to occur, particularly from the commercial and waste water sectors and based on market forces. This brings benefits in line with the proximity principle.

The Bournemouth, Dorset & Poole Waste Plan acknowledges that hazardous waste facilities serve a wider catchment area and Policy 9 makes appropriate provision on this basis.

Hampshire County Council supports this approach.

Given the cross-boundary waste relationship that exists between Hampshire and Dorset, Dorset County Council and Hampshire County Council will seek to periodically review the situation, through monitoring.

¹ Including on behalf of Borough of Poole and Bournemouth Borough Council

² Including on behalf of Southampton City Council, Portsmouth City Council, New Forest National Park Authority and South Downs National Park Authority

SCG-05

Signed:

Mike Garrity, County Planning, Minerals & Waste Team Leader, Dorset County Council

A handwritten signature in black ink that reads "C. D. Murray". The signature is written in a cursive style with a small horizontal line at the end.

Chris Murray, Head of Strategic Planning, Hampshire County Council

Date: 29 June 2018