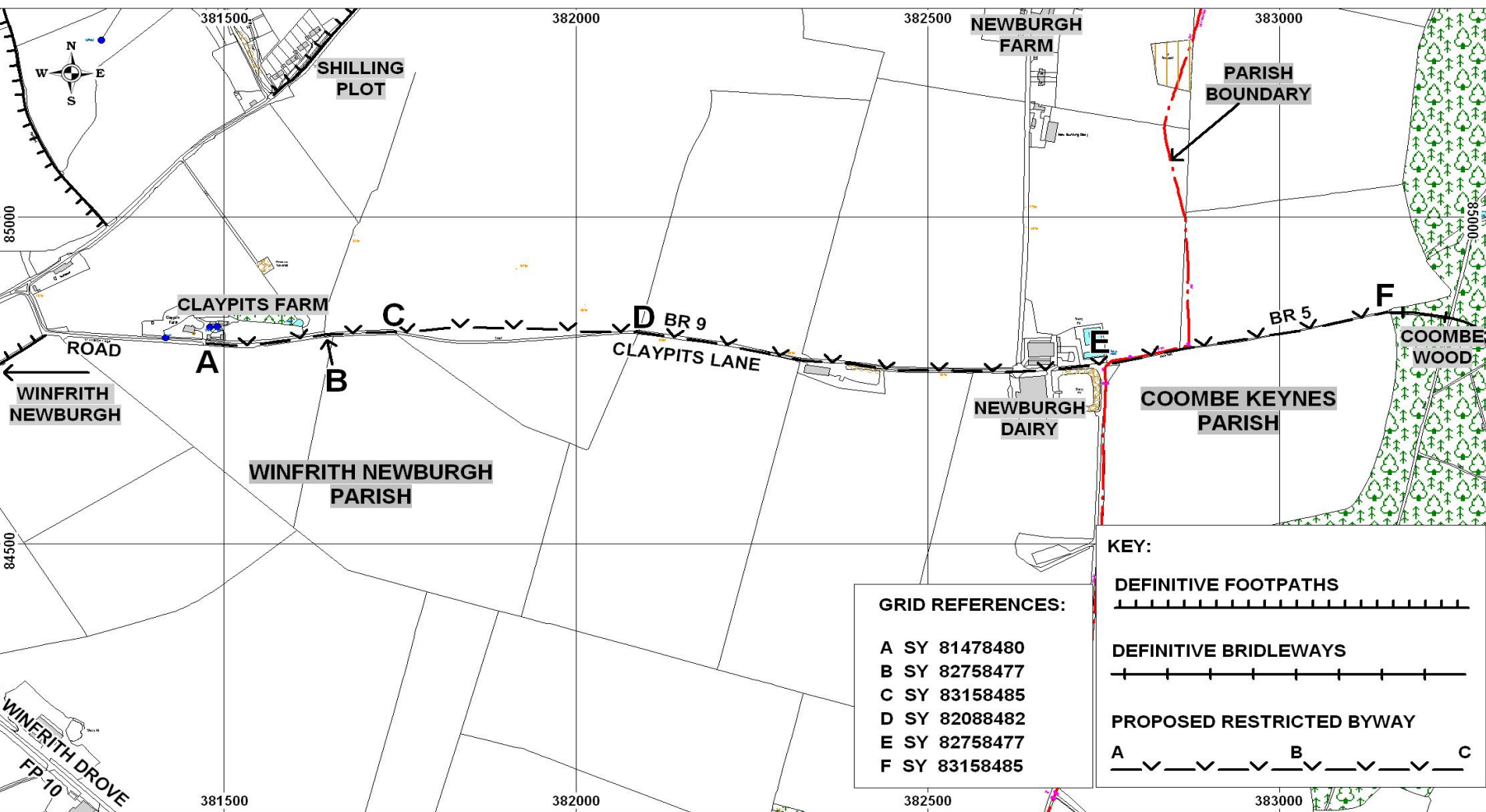


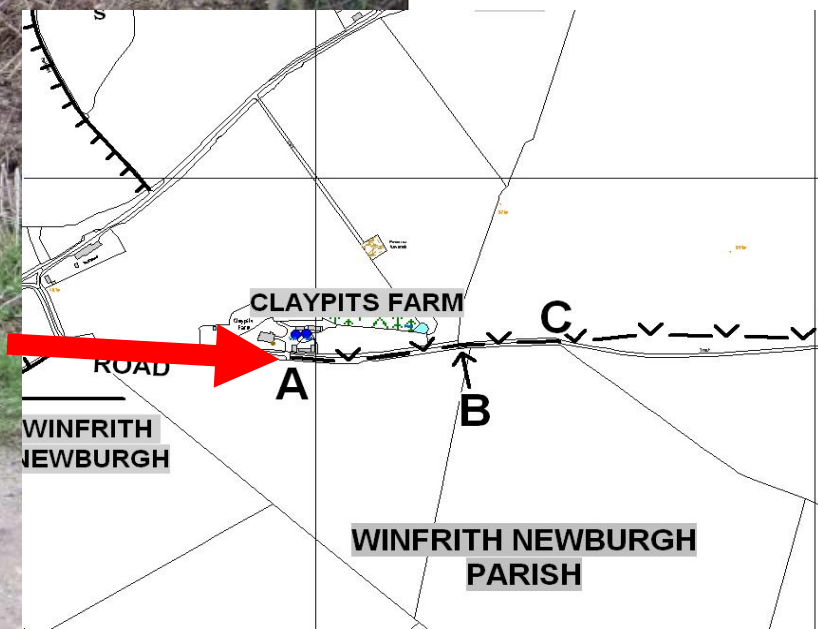
**Dorset County Council
(Upgrading of Bridleway 9,
Winfrith Newburgh and Part of
5, Coombe Keynes (Claypits
Lane) to Restricted Byways)
Definitive Map and Statement
Modification Order 2011**

Drawing No. 10/04/2

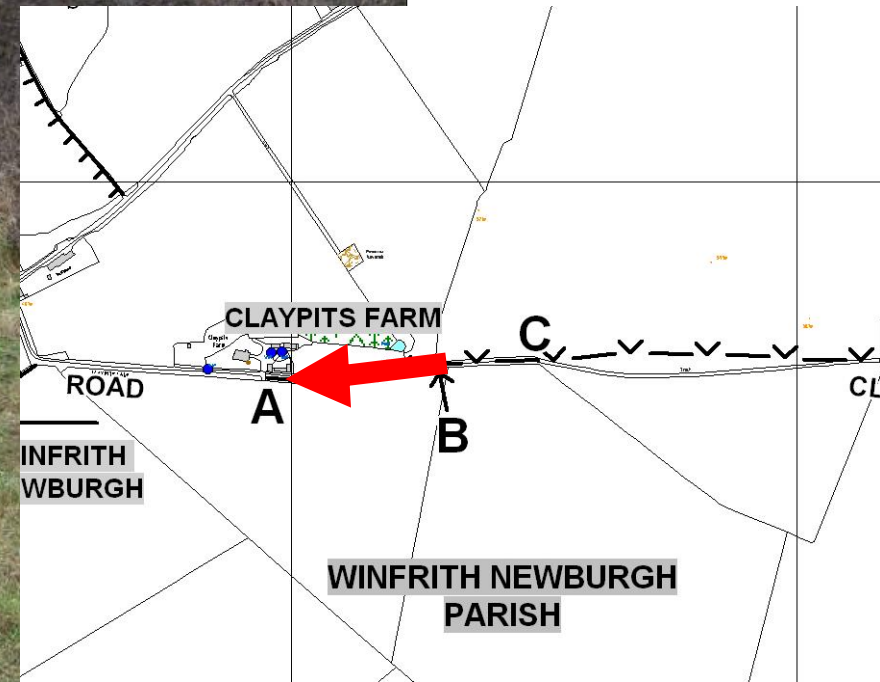
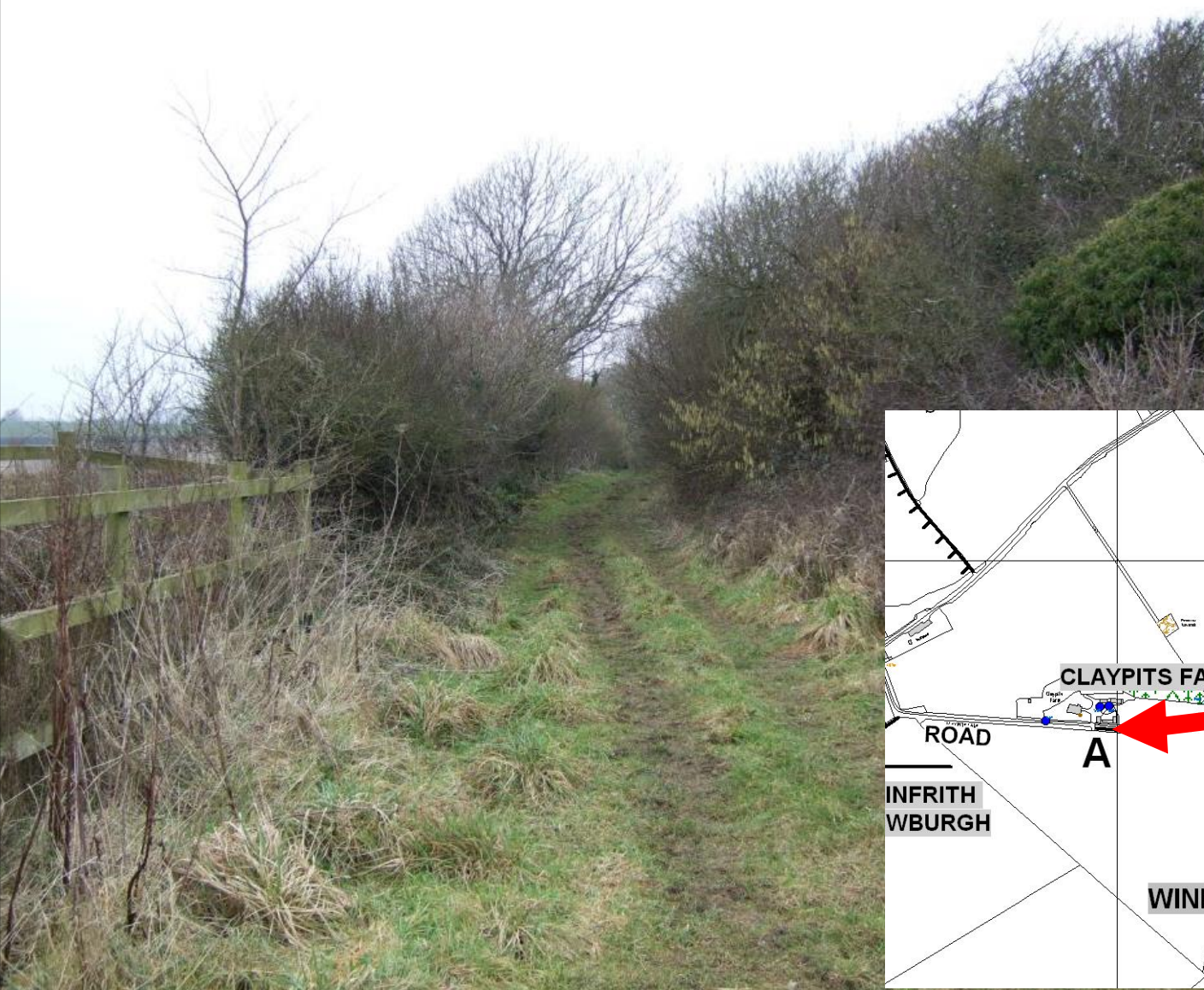


Roads & Rights of Way Committee

Point A

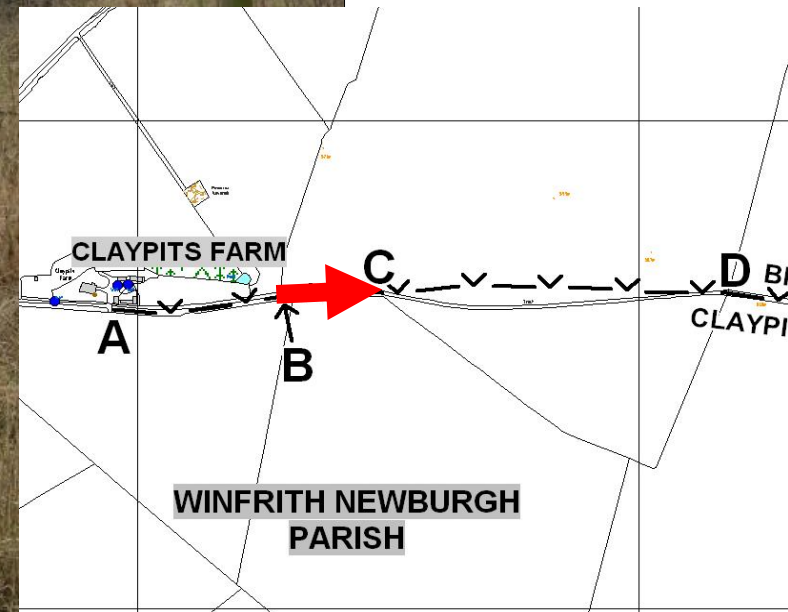
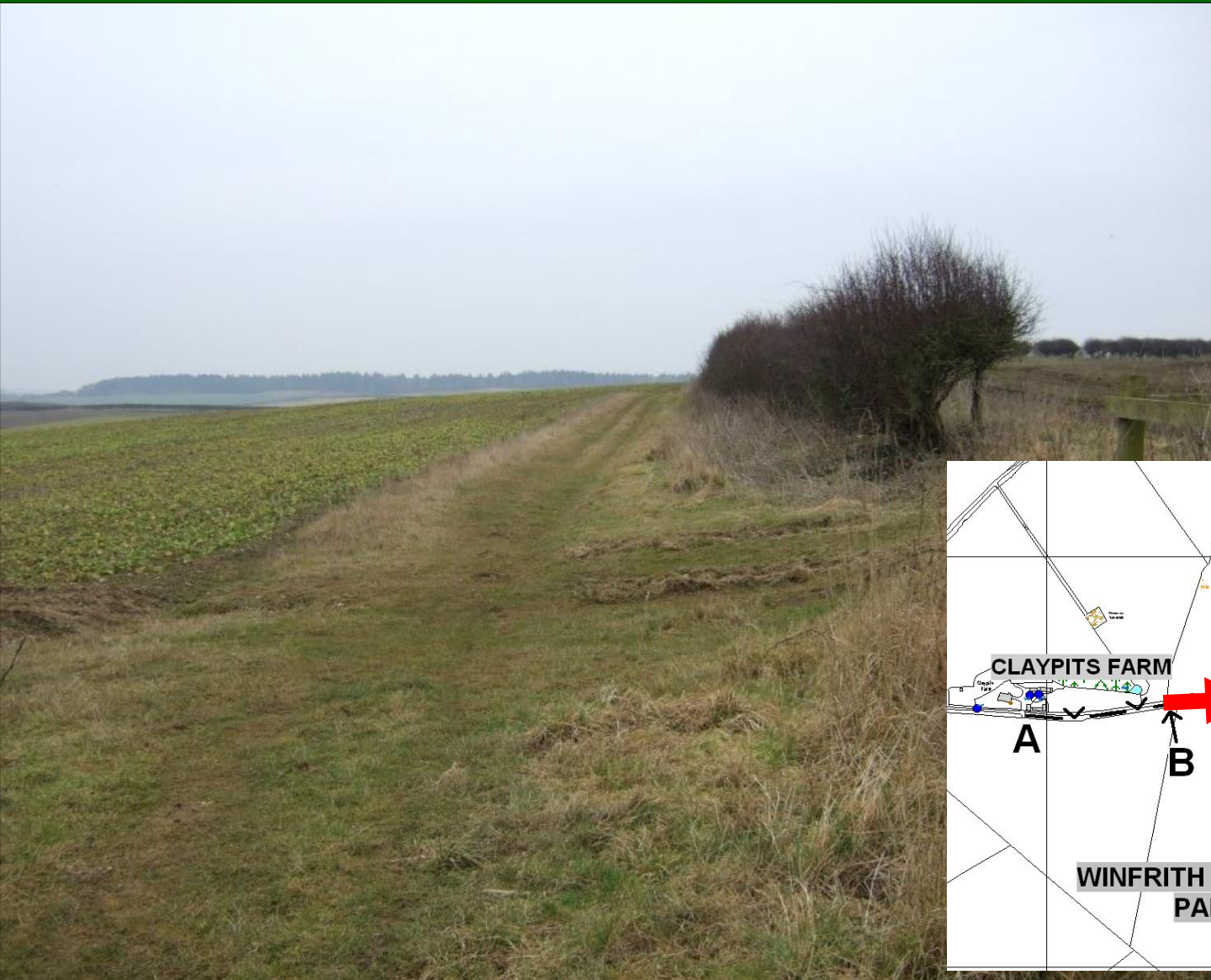


**From point
B looking
back at
point A**

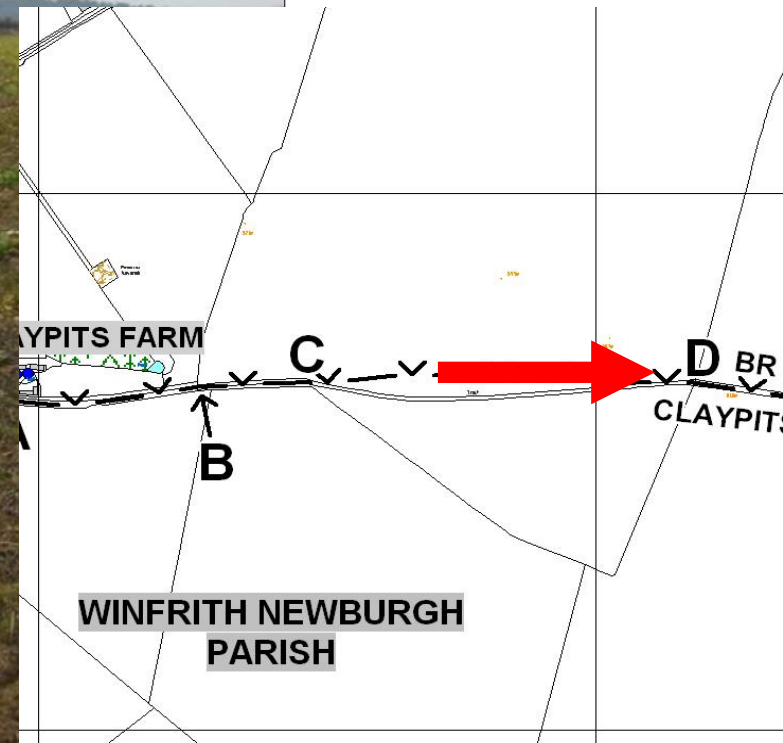


Roads & Rights of Way Committee

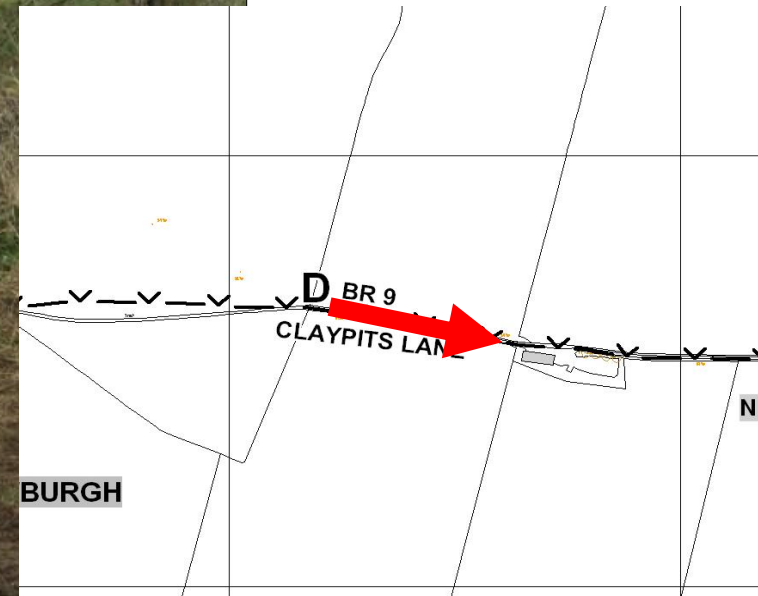
Point B
Looking
east across
open field
towards
Point C



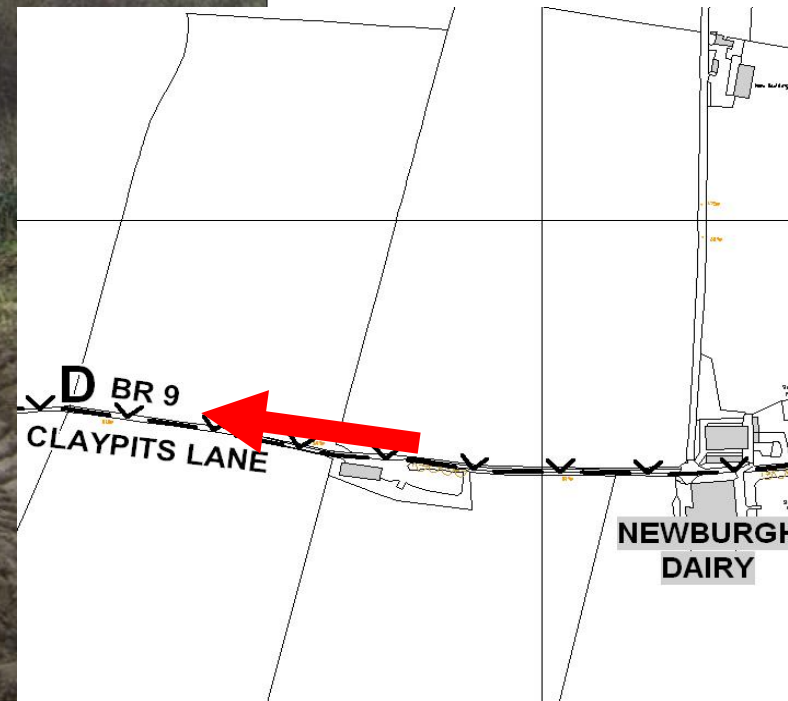
**Across the
open field
towards
Point D**



**Exit from
field from
point D
looking east**

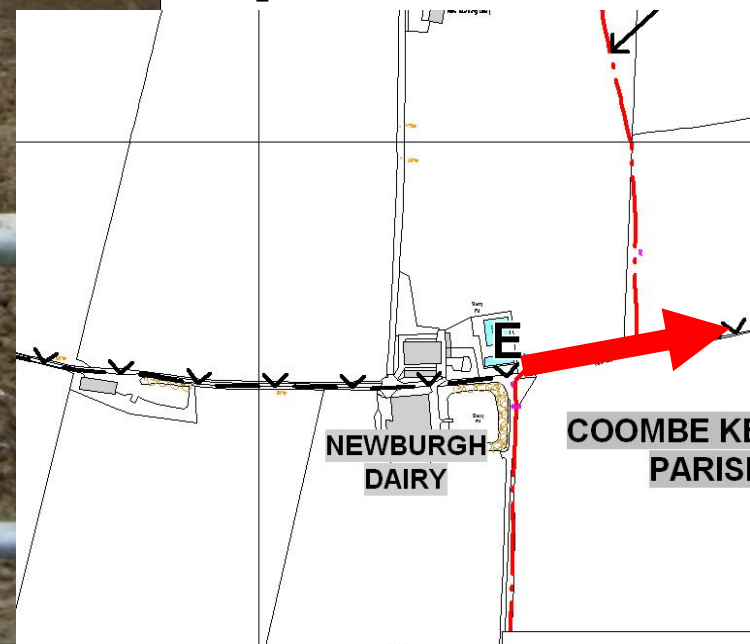


**Looking
west back
towards D**



Roads & Rights of Way Committee

**Looking
east from
point E
towards
point F**



**Looking
West
from
point F**

