



Bournemouth, Dorset and Poole – Mineral Sites Plan
Pre-Submission Consultation Draft

Statement of Consultation
Regulation 22(1) (c) (i) - (iv)

December 2017

Introduction

- 1.1 Bournemouth Council, the Borough of Poole and Dorset County Council, as Mineral Planning Authorities, are responsible for mineral planning in their areas. Dorset County Council, working with and on behalf of the Borough of Poole and Bournemouth Borough Council¹, is preparing the Bournemouth, Dorset and Poole Minerals Plan. It is being prepared in two parts:
 - The **Bournemouth, Dorset and Poole Minerals Strategy**, adopted in May 2014 and setting out the overarching strategic approach for the provision of minerals in the three authorities up to 2028. It also included the development management policies against which planning applications for minerals development will be developed, along with a methodology for assessing future sites for minerals development.
 - The **Bournemouth, Dorset and Poole Mineral Sites Plan** (MSP - currently under preparation) which will set out specific policies and proposals for the provision of land for minerals development, along with other measures, up to 2033.
- 1.2 The adopted Minerals Strategy replaces the Dorset Minerals and Waste Local Plan 1999, with the exception of Policies 6, 15, 16, 30 and 35. These policies are saved until the Bournemouth, Dorset and Poole Mineral Sites Plan (MSP) has been adopted.
- 1.3 The Mineral Planning Authority has a statutory responsibility to identify potential sites and areas suitable for minerals and waste development within the county. The MSP follows the principles set out in the Minerals Strategy, identifying allocations for minerals development and developing the minerals safeguarding functions, based on a comprehensive process of site assessment and selection.
- 1.4 This statement sets out how Dorset County Council has involved the public and other stakeholders in the preparation of the MSP. It has been prepared in accordance with Regulation 22 (c) of the Town and Country Planning (Local Planning) (England) Regulations 2012 (the 2012 Regulations).
- 1.5 As well as regular engagement with key stakeholders, there have been four main stages of engagement/consultation undertaken specifically for the preparation of a mineral sites document. These four stages were followed by the Pre-Submission Consultation undertaken between 1 December 2017 and 31 January 2018 under Regulation 19 of the 2012 Regulations.
- 1.6 For the Bournemouth, Dorset and Poole Minerals Strategy, the details of the consultation process are set out in the Bournemouth, Dorset and Poole Minerals Strategy – Statement of Consultation (MSSD-04) which can be seen at: <https://www.dorsetforyou.gov.uk/mcs/examination-library>
- 1.7 For the Draft Mineral Sites Plan, there will have been five main stages of engagement – one under Regulation 25 of the 2008 Local Plan Regulations; three under Regulation 18 of the 2012 Regulations and one (Pre-Submission Consultation) under Regulation 19 of the 2012 Regulations:
 - Minerals Site Allocations Document (October to December 2008)
 - Draft Mineral Sites Plan (December 2013 to February 2014)
 - Draft Mineral Sites Plan (July to September 2015)
 - Draft Mineral Sites Plan Update (May to July 2016)
 - Pre-Submission Draft Mineral Sites Plan (1 December 2017 and 31 January 2018)
- 1.8 This report follows the sequential stages of consultation of the Draft Mineral Sites Plan and for each stage seeks to answer the following questions:
 - Who did we invite to comment?
 - How were they invited to comment?
 - What were the main issues raised, and?
 - How were those issues addressed?

¹ Dorset County Council prepares the relevant minerals and waste policy documents working with and on behalf of Bournemouth Council and Borough of Poole under the terms of a Service Level Agreement

The Bournemouth, Dorset and Poole Minerals Core Strategy: 2006-2007

Background

- 2.1 The Dorset Minerals and Waste Local Plan was adopted in 1999, and was the source of local minerals policy guidance. It covered Bournemouth, Dorset and Poole. In 2006 the Bournemouth, Dorset and Poole Waste Plan was adopted, and the Waste policies of the 1999 Plan were superseded.
- 2.2 Under the requirements of the then recently introduced 2004 Planning and Compulsory Purchase Act, work began in 2006/2007 to prepare a Minerals Core Strategy which would include site allocations.
- 2.3 The first stage was the preparation of a MCS Issues and Options paper. Consultation on the Issues and Options Report was undertaken for an eight-week period beginning on the 23 November 2007 until the 18 January 2008. Copies of the document, questionnaires and/or leaflets publicising the consultation period and availability of the document were widely circulated. An online questionnaire was also prepared and made available during the consultation period. Consultation on the MCS drew responses from 64 individuals, companies and/or statutory bodies.
- 2.4 Having begun the process of identifying the relevant issues, attention then turned to the preparation of the Minerals Sites Allocations Document (MSAD). The intention was to ensure that the MSAD was progressed to a similar stage as the MCS, and the two documents could then be merged into a single Plan, setting out both a strategy for the supply of minerals in Bournemouth, Dorset and Poole and the demonstrable means of delivering the strategy, through allocation of mineral sites.

First Consultation on Sites: The Minerals Site Allocations Document 2008

Background

- 3.1 In 2007 work on preparation of the Minerals Core Strategy was temporarily halted and attention turned to preparing the MSAD.
- 3.2 A "Call for Sites" was issued in July 2007, inviting land owners, mineral operators and agents to nominate any mineral bearing land for consideration for possible inclusion in the minerals sites plan. In addition, sites within the adopted MWLP were reviewed to identify any sites where extraction had not yet taken place. A review of the sites considered for inclusion in the MWLP but not contained in the adopted Plan was also undertaken. Discussion also took place with development control officers in the County Council to identify any potential new sites or extensions to existing sites that they were aware of. Through this work, the Bournemouth, Dorset and Poole Minerals Site Allocations Document was prepared for consultation.

What did we consult on?

- 3.3 The consultation document contained thirty-seven site nominations, including for sand and gravel, Purbeck Stone, Portland Stone, Ball Clay and other building stone sites along with the Criteria for Minerals Sites Selection.
- 3.4 The MSAD can be seen here: <https://www.dorsetforyou.gov.uk/media/180918/MSDCC54---MSAD-Discussion-Paper/pdf/MSDCC54 - MSAD Discussion Paper.pdf>
- 3.5 The individual responses are available to view here: http://consult.dorsetforyou.com/portal/minerals_and_waste/minerals_site_allocations_document/msad?tab=list

Who was invited to comment?

- 3.6 Consultation was carried out in accordance with the Dorset County Council Statement of Community Involvement (SCI). Everyone on the database of consultees was informed of the consultation period and many including Parish Councils were sent a hard copy of the document and copy of the response questionnaire. Consultees included:
- All 'Specific Consultation Bodies' and selected 'General Consultation Bodies' (as defined in the Regulations) were sent a hard copy of the Discussion Paper document and accompanying questionnaire. (The Statement of Community Involvement contains a detailed list of consultees included under each heading)
 - All 'Specific Consultation Bodies' and selected 'General Consultation Bodies' were offered a hard copy of the Sustainability Appraisal (SA) and Site Assessments free on request.
 - Government Office for the South West was sent a hard copy and an electronic copy of the Document, SA and Site Assessments.
 - The consultation document, SA and Site Assessments were made available on dorsetforyou.com
 - The relevant pages of dorsetforyou.com were kept fully up to date.
 - There was a link from Bournemouth Borough Council's and the Borough of Poole's websites to the relevant pages of dorsetforyou.com
 - Hard copies of the consultation document, SA and Site Assessments were made available to all stakeholders free of charge if requested.
 - For the convenience of stakeholders, hard copies of the consultation document, SA and Site Assessments were also be made available to view at the planning reception areas of; Dorset County Council, Bournemouth Borough Council, The Borough of Poole and all district and borough councils within Dorset.
 - Issue 6 of "Planning for Minerals and Waste" was produced, publicising the consultation period, where the documents can be accessed and how stakeholders can comment. The leaflet was circulated widely to all consultees on our database.

- Copies of the leaflet were distributed to all libraries in Bournemouth, Dorset and Poole. It was also made available at County Hall and at the planning reception areas of Bournemouth Borough Council, the Borough of Poole and all district and borough councils within Dorset.
- A poster was produced and circulated to libraries with a request for it to be displayed on the library notice board. The poster accompanied the leaflets and further publicised the availability of the consultation documents and consultation period.
- An email bulletin was sent to publicise the consultation of the document. This email was sent to internal consultees and other persons who had shown an interest in minerals and waste planning, either from Dorset County Council's database or the Statement of Community Involvement databases of Bournemouth Borough Council and the Borough of Poole.
- A series of public exhibitions were set up in areas close to the suggested mineral sites.
- One to one meetings with stakeholders were offered, on request, during the period of consultation.
- Press releases explaining the consultation document and advertising the consultation period were sent out at the beginning and half way through the consultation period.
- Paid adverts were produced explaining the consultation document and advertising the consultation period and exhibitions.
- 'Your Dorset' newspaper was used to publicise the consultation document, advertise the consultation period and exhibitions.

How were they invited to comment?

- 3.7 Consultation was undertaken under Regulation 25 of the Town and Country Planning (Local Development) (England) (Amendment) Regulations 2008. The consultation undertaken was also in accordance with Dorset County Council's Statement of Community Involvement (SCI) and the SCI's of Bournemouth and Poole.
- 3.8 Consultation on the MSAD Discussion Paper took place for eight weeks from Friday 17 October until Friday 12 December 2008. A comprehensive range of consultation methods was used in order to gather responses from stakeholders, including:
- Full details of the discussion paper and associated supporting documents made available to download from the Dorsetforyou.com website and links were provided from Bournemouth and Poole's websites
 - An interactive version of the Discussion Paper was available to view and comment on online.
 - The consultation was a 'featured link' on the homepage of www.dorsetforyou.com from the start of November 2008. It was also the main feature on the homepage for several days.
 - A full page article appeared in Your Dorset and there were also features in BH Life and Poole News.
 - Issue 6 of 'Planning for Minerals and Waste' was published and circulated widely including to all Parish Councils and libraries in Dorset, Bournemouth and Poole.
 - Advertisements were placed in newspapers covering the Plan area.
 - Press releases were distributed both prior to the start of the consultation period and towards the end, and generated press coverage throughout the consultation period.
 - A series of eleven exhibitions were held in areas close to suggested mineral sites.
 - The document and questionnaire were made available in Dorset County Council, Bournemouth Borough Council and the Borough of Poole's planning reception, planning reception areas of all district and borough councils and libraries throughout the Plan area.

What response did we get?

- 3.9 In total 3537 comments were made by 1431 individuals or organisations.

- 3.10 As well as commenting on sites many stakeholders also commented on the list of criteria based questions. The majority of respondents agreed with the principles of the criteria based questions. However, many detailed suggestions were made for additions and amendments that will need to be considered in detail.
- 3.11 Three potential new sites for the extraction of minerals were also suggested during the consultation period: AS20 Clump Hill - Three Legged Cross (sand and gravel); PK12 Kingston Hill, Corfe Castle (Purbeck stone/marble) and BS03 Sloes Hill, Symondsburry (Inferior Oolite – building stone). In addition, a further eight sites were suggested for consideration as future irrigation reservoirs, but no plans were provided.
- 3.12 Below is a list of the sites contained within the discussion paper and a brief summary of what is considered to be some of the key issues facing the development of these sites.

Table 1 – Key Issues Arising from 2008 MSAD Consultation

Ball Clay Sites	
Site Name	Key Issues
BC01 Carrot Bank	Impact on Creech Grange (Grade I listed) and its setting Impact on biodiversity particularly on important lichens
BC02 Dorey's	Traffic particularly impact on Grange Road Associated impact of sand and gravel extraction Landscape issues particularly due to site's location within AONB
BC03 Povington	Traffic issues Impact on biodiversity particularly on important lichens Landscape issues particularly due to sites location within AONB Possible conflict with MoD usage
BC04 Trigon Hill	Traffic issues particularly cumulative impact on existing activities Landscape impact
Sand and Gravel Sites	
Site Name	Key Issues
AS01 Binnegar	Site lies within Common Land Presence of Battery Bank Scheduled Monument
AS02 Cannon Hill	Traffic impact in an already congested area Loss of an important area for recreation Proximity to residential properties
AS03 Crossways	Traffic and associated mud on road Concerns over standard of restoration
AS04 Dorey's	Traffic particularly impact on Grange Road Principle of extracting sand and gravel from within the AONB

	Landscape impact particularly due to sites location within AONB
AS05 East Parley Residual Reserve	Traffic Proximity to residential properties
AS06 Great Plantation	Impact on biodiversity specifically Dorset Heath's SAC and SPA Impact on Scheduled Monuments and their setting
AS07 Hodge Ditch Area 2	Impact on the setting and integrity of Forde Abbey and historic park and gardens
AS08 Horton Heath	Impact on biodiversity particularly as site is almost entirely SNCI Landscape impacts Traffic and access
AS09 Hurn Court Farm	Traffic particularly along Parley Lane Proximity to the airport with particular concern over availability of suitable fill material
AS10 Moreton Plantation	Impact on biodiversity interest Loss of an important area for recreation Possible conflict with MoD usage
AS11 Parley Court Phase 3	Traffic particularly impact on A31 Impact on Landscape Character particularly from Stour Valley Way path Concern over source and sufficiency of suitable inert fill material Flooding issues
AS12 Philliol's Farm	Impact on existing Landscape Character Proximity to residential properties Impact on biodiversity particularly the Fairy Shrimp and associated ephemeral pond
AS13 Roeshot	Traffic and access issues Loss of recreation area and agricultural land Landscape issues
AS14 Sturminster Marshall	Traffic and access issues particularly immediate impact on A31 Proximity to residential properties Loss of recreation area and frustrate the future opening of the Somerset and Dorset Railway as a footpath Flooding issues due to high water table
AS15 Tatchell's	Traffic impacts particularly along Bere Regis to Wareham road Proximity to residential properties Landscape issues

AS16 Trigon Hill	Traffic issues particularly cumulative impact on existing activities Landscape impact
AS17 Uddens Plantation	Impact on biodiversity Traffic and access issues particularly immediate impact on A31 Loss of important recreational area
AS18 Wimborne Minster	Site Withdrawn by promoters due to unwillingness of landowner for site to be progressed
AS19 Woodsford	Impact on landscape character Traffic impacts Impact on biodiversity
Purbeck Stone Sites	
Site Name	Key Issues
PK01 Belle Vue	Site area too large Restoration should be progressive
PK02 Blacklands	The restoration proposed should be reconsidered and should be progressive
PK03 California Quarry	Impact on Natura 2000 site and the Jurassic Coast The restoration proposed should be reconsidered and should be progressive
PK04 Downs Quarry	Impact on existing Wessex Water apparatus The restoration proposed should be considered in more detail
PK05 Land South of Acton Field and Priests Way	The restoration proposed should be reconsidered and should be progressive
PK06 Land to the North of Worth Matravers road	Impact on existing Wessex Water apparatus The restoration proposed should be reconsidered and should be progressive
PK07 Land to the South of B3069	Visual impacts Impact on existing Wessex Water apparatus The restoration proposed should be considered in more detail
PK08 Quarr Farm	Cumulative landscape and visual impact Access considerations Impact on existing Wessex Water apparatus
PK09 South Downs Quarry	The restoration proposed should be considered in more detail

PK10 Southard Quarry	The restoration proposed should be considered in more detail
PK11 St Aldhelm's Quarry	Landscape and visual impact on AONB and World Heritage Site Impact on archaeological features
Portland Stone	
Site Name	Key Issues
PD01 Bower's Mine	Disturbance to cemetery and Impact on cultural heritage Impact on residential properties Conflict with MoD operations Impact upon Wessex Water apparatus
Building Stone	
Site Name	Key Issues
BS01 Manor Farm Quarry	Impact on Landscape Character particularly due to the sites prominent location in the ANOB Traffic Proximity to residential properties
BS02 Marnhull Quarry	Consider site area with regards to the large estimated site life.

3.13 A more detailed summary of the comments made to each site and officers' initial responses is available on request.

What did we do about it?

3.14 Following this consultation, work on MSAD preparation continued, taking into account the issues raised at consultation. Based on the comments made and issues raised, specific questions regarding the sites contained in the consultation document and the new sites brought forward were to be compiled, with the intention of contacting site promoters to request further information. The merits of all the sites were to be tested against the proposed site selection criteria, and further Sustainability Appraisal undertaken. When this was done, decisions were to be made on the suitability of each site for inclusion in the emerging Plan.

3.15 Some of these sites were withdrawn, including: BC01 Carrot Bank; AS02 Cannon Hill; AS03 Crossways; AS05 East Parley Residual Reserve; AS17 Uddens Plantation; AS18 Wimborne Minster; PK06 Land to the North of Worth Matravers road; PK07 Land to the South of B3069.

3.16 However, before decisions could be taken regarding which sites to progress and which to reject, work on the MSAD was temporarily halted.

Suspension of MSAD preparation work: 2009

3.17 During 2008, there had been an emerging view that strategic sites could be included in core strategies, and that for minerals core strategies, this could include all sites. It was therefore decided to effectively merge the Minerals Core Strategy and the Minerals Site Allocations Document. The next period of consultation on the MSAD was expected to be undertaken during autumn 2009 and it was anticipated that the MCS and MSAD would be run in parallel or ideally merged, forming an all-encompassing Minerals Plan covering Bournemouth, Dorset and Poole.

- 3.18 However, in mid-2009 work on the site allocations part of the document stopped on the advice of the then Government Office for the South West in order to prioritise preparation of the Minerals Strategy. It was felt that an all-inclusive minerals plan could result in an excessively long Examination and potentially create opportunities for legal challenge, with the risk that the whole Plan could fail. In common with a number of other planning authorities, and following further discussion with GOSW, it was decided to defer submission of the Minerals Site Allocations Document until after the Minerals Core Strategy had been to Examination and found to be sound, and to focus on completing the Minerals Strategy.
- 3.19 Work had begun on the further assessment of the sites under consideration, but had not reached the stage of identifying which sites were not to be considered further, and which sites would be taken forward to further assessment and consideration.
- 3.20 Attention then turned back to the Minerals Core Strategy.

The Bournemouth, Dorset and Poole Minerals Strategy: 2009-2014

Background

- 4.1 The Minerals Core Strategy went through three significant consultation stages prior to Publication/Pre-Submission Consultation: consideration of Issues and Options (November 2007 – January 2008); the first draft document (October – December 2010); and the revised draft (July to September 2011). It was also the subject of a 'critical friend review' by the Planning Officers' Society, the recommendations from which were incorporated into the revised draft consultation stage. Each stage involved further refinement, evidence gathering (where necessary), engagement with the minerals industry and an iterative process of sustainability appraisal.
- 4.2 The Minerals Core Strategy sets out a spatial strategy for minerals development in Bournemouth, Dorset and Poole, with a Vision and Objectives for supply and management of minerals in Bournemouth, Dorset and Poole. It is a strategic document and not site-specific, indicating the range, type, quantity and broad location of minerals extraction over the plan period up to 2028. It contains the development management policies against which applications for mineral workings can be considered, along with policy guidance on mineral safeguarding and site restoration. The site assessment criteria, to assist in selecting the sites for the site allocation stage, are included as an Appendix to the Minerals Strategy.
- 4.3 In May 2014 the Bournemouth, Dorset and Poole Minerals Strategy was adopted, after completing the necessary stages of consultation, and being found sound at Examination.
- 4.4 A key role of the Minerals Strategy is to provide the strategic context for the site allocations work, and the Draft Mineral Sites Plan has been prepared to be in conformity with the 2014 Minerals Strategy, along with national policy as set out in various documents such as the National Planning Policy Framework (NPPF) and National Planning Practice Guidance.

Relationship of Mineral Sites Plan to Minerals Strategy

- 4.5 The emerging Mineral Sites Plan is intended to comply with the 2014 Minerals Strategy and to support the Minerals Strategy and through site allocation and other means to deliver a number of the specific strategies set out in the Minerals Strategy.
- 4.6 The Mineral Sites Plan will not have to go through a separate process of developing a Vision, Objectives and strategy for mineral provision, as this has already been done for the Minerals Strategy.
- 4.7 Preparation of the Minerals Strategy involved fulfilling the Duty to Cooperate as required for the whole strategy, and for the various elements of it. The Duty to Cooperate Statement for the Minerals Strategy can be seen here: <https://www.dorsetforyou.gov.uk/mcs/examination-library> (See document MSSD-10)
- 4.8 In relation to the Mineral Sites Plan, it is accepted that for matters such as the amount of mineral to be provided during the plan period and the strategic location from which it will come, the Duty to Cooperate has been fulfilled. The MSP will comply with the Duty to Cooperate in terms of the specific issues it addresses, but will not re-visit the issues addressed in the Minerals Strategy.

Table 2 - Stages of Consultation and Sites Under Consideration at Each Stage

	Minerals Site Allocations Document 2008	Draft Mineral Sites Plan 2013-2014	Draft Mineral Sites Plan 2015	Draft Mineral Sites Plan Update 2016	Pre-Submission Draft 2017-2018
Ball Clay	BC01 Carrot Bank	BC01 Carrot Bank	BC01 Carrot Bank	BC01 Carrot Bank	BC01 Carrot Bank
	BC02 Dorey's	BC02 Dorey's	BC02 Dorey's	BC02 Dorey's	BC02 Dorey's
	BC03 Povington	BC03 Povington	BC03 Povington	BC03 Povington	BC03 Povington
	BC04 Trigon Hill extension	BC04 Trigon Hill extension	BC04 Trigon Hill extension	BC04 Trigon Hill extension	BC04 Trigon Hill extension
		BC05 Dorey's - Holme Heath	BC05 Dorey's - Holme Heath	BC05 Dorey's - Holme Heath	BC05 Dorey's - Holme Heath
		BC06 Woolsbarrow	BC06 Woolsbarrow	BC06 Woolsbarrow	BC06 Woolsbarrow
Aggregates	AS01 Binnegar	AS01 Binnegar	AS01 Binnegar	AS01 Binnegar	AS01 Binnegar
	AS02 Cannon Hill	AS02 Cannon Hill	AS02 Cannon Hill	AS02 Cannon Hill	AS02 Cannon Hill
	AS03 Crossways	AS03 Crossways	AS03 Crossways	AS03 Crossways	AS03 Crossways
	AS04 Dorey's	AS04 Dorey's	AS04 Dorey's	AS04 Dorey's	AS04 Dorey's
	AS05 East Parley Residual Reserve	AS05 East Parley Residual Reserve	AS05 East Parley Residual Reserve	AS05 East Parley Residual Reserve	AS05 East Parley Residual Reserve
	AS06 Great Plantation	AS06 Great Plantation	AS06 Great Plantation	AS06 Great Plantation	AS06 Great Plantation
	AS07 Hodge Ditch Area 2	AS07 Hodge Ditch Area 2	AS07 Hodge Ditch Area 2	AS07 Hodge Ditch Area 2	AS07 Hodge Ditch Area 2
	AS08 Horton Heath	AS08 Horton Heath	AS08 Horton Heath (revised)	AS08 Horton Heath (revised)	AS08 Horton Heath (revised)
	AS09 Hurn Court Farm	AS09 Hurn Court Farm	AS09 Hurn Court Farm	AS09 Hurn Court Farm	AS09 Hurn Court Farm
	AS10 Moreton Plantation	AS10 Moreton Plantation	AS10 Moreton Plantation	AS10 Moreton Plantation	AS10 Moreton Plantation
	AS11 Parley Court Phase 3	AS11 Parley Court Phase 3	AS11 Parley Court Phase 3	AS11 Parley Court Phase 3	AS11 Parley Court Phase 3
	AS12 Philliol's Farm	AS12 Philliol's Farm	AS12 Philliol's Farm	AS12 Philliol's Farm	AS12 Philliol's Farm
	AS13 Roeshot	AS13 Roeshot	AS13 Roeshot	AS13 Roeshot	AS13 Roeshot
	AS14 Sturminster Marshall	AS14 Sturminster Marshall	AS14 Sturminster Marshall	AS14 Sturminster Marshall (George's Land)	AS14 Sturminster Marshall (George's Land)
	AS15 Tatchell's	AS15 Tatchell's	AS15 Tatchell's	AS15 Tatchell's	AS15 Tatchell's
	AS16 Trigon Hill	AS16 Trigon Hill	AS16 Trigon Hill	AS16 Trigon Hill	AS16 Trigon Hill
	AS17 Uddens Plantation	AS17 Uddens Plantation	AS17 Uddens Plantation	AS17 Uddens Plantation	AS17 Uddens Plantation

Purbeck stone

AS18 Wimborne Minster
AS19 Woodsford

AS18 Wimborne Minster
AS19 Woodsford
AS21 Came Home Farm
AS22 Trigon Hill Extension
AS23 Gore Heath
AS24 Purple Haze (south)

AS18 Wimborne Minster
AS19 Woodsford
AS21 Came Home Farm
AS22 Trigon Hill Extension
AS23 Gore Heath
AS24 Purple Haze (south)
AS25 Station Road
AS26 Hurst Farm

AS18 Wimborne Minster	AS18 Wimborne Minster
AS19 Woodsford	AS19 Woodsford
AS21 Came Home Farm	AS21 Came Home Farm
AS22 Trigon Hill Extension	AS22 Trigon Hill Extension
AS23 Gore Heath	AS23 Gore Heath
AS24 Purple Haze (south)	AS24 Purple Haze (south)
AS25 Station Road	AS25 Station Road
AS26 Hurst Farm	AS26 Hurst Farm
AS28 Gallows' Hill A&B	AS28 Gallows' Hill A&B
PK16 Swanworth Quarry Extension	PK16 Swanworth Quarry Extension

Crushed Rock

PK16 Swanworth Quarry Extension

Recycled Aggregate

RA01 White's Pit

RA01 White's Pit	RA01 White's Pit
------------------	------------------

PK01 Belle Vue
PK02 Blacklands Quarry Extension
PK03 California Quarry
PK04 Downs Quarry
PK05 Land South of Acton Field and Priests Way
PK06 Land to the North of Worth Matravers road
PK07 Land to the South of B3069
PK08 Quarr Farm
PK09 South Downs Quarry
PK10 Southard Quarry
PK11 St Aldhelm's Quarry

PK01 Belle Vue
PK02 Blacklands Quarry Extension
PK03 California Quarry
PK04 Downs Quarry
PK05 Land South of Acton Field and Priests Way
PK06 Land to the North of Worth Matravers road
PK07 Land to the South of B3069
PK08 Quarr Farm
PK09 South Downs Quarry
PK10 Southard Quarry
PK11 St Aldhelm's Quarry
PK15 Downs Quarry Extension

PK01 Belle Vue
PK02 Blacklands Quarry Extension
PK03 California Quarry
PK04 Downs Quarry
PK05 Land South of Acton Field and Priests Way
PK06 Land to the North of Worth Matravers road
PK07 Land to the South of B3069
PK08 Quarr Farm
PK09 South Downs Quarry
PK10 Southard Quarry
PK11 St Aldhelm's Quarry
PK15 Downs Quarry Extension

PK01 Belle Vue	PK01 Belle Vue
PK02 Blacklands Quarry Extension	PK02 Blacklands Quarry Extension
PK03 California Quarry	PK03 California Quarry
PK04 Downs Quarry	PK04 Downs Quarry
PK05 Land South of Acton Field and Priests Way	PK05 Land South of Acton Field and Priests Way
PK06 Land to the North of Worth Matravers road	PK06 Land to the North of Worth Matravers road
PK07 Land to the South of B3069	PK07 Land to the South of B3069
PK08 Quarr Farm	PK08 Quarr Farm
PK09 South Downs Quarry	PK09 South Downs Quarry
PK10 Southard Quarry	PK10 Southard Quarry
PK11 St Aldhelm's Quarry	PK11 St Aldhelm's Quarry
PK15 Downs Quarry Extension	PK15 Downs Quarry Extension

PK16 Swanworth Quarry Extension	(See Crushed rock - above)	(See Crushed rock - above)	(See Crushed rock - above)
PK17 Home Field	PK17 Home Field	PK17 Home Field	PK17 Home Field
PK18 Quarry 4 Extension	PK18 Quarry 4 Extension	PK18 Quarry 4 Extension	PK18 Quarry 4 Extension
PK19 Broadmead	PK19 Broadmead	PK19 Broadmead	PK19 Broadmead
	PK20 Gallows' Gore	PK20 Gallows' Gore	PK20 Gallows' Gore
PK12 Kingston Hill	PK12 Kingston Hill	PK12 Kingston Hill	PK12 Kingston Hill
	PK20 Crack Lane	PK20 Crack Lane	PK20 Crack Lane

Portland Stone

PD01 Bower's Mine	PS01 Bower's Mine	PS01 Bower's Mine	PS01 Bower's Mine	PS01 Bower's Mine
	PS02 Perryfield Quarry Extension	PS02 Perryfield Quarry Extension	PS02 Perryfield Quarry Extension	PS02 Perryfield Quarry Extension

Other Building Stone

BS01 Manor Farm Quarry	BS01 Manor Farm Quarry	BS01 Manor Farm Quarry	BS01 Manor Farm Quarry	BS01 Manor Farm Quarry
BS02 Marnhull Quarry	BS02 Marnhull Quarry	BS02 Marnhull Quarry	BS02 Marnhull Quarry	BS02 Marnhull Quarry
	BS04 Frogden Quarry	BS04 Frogden Quarry	BS04 Frogden Quarry	BS04 Frogden Quarry
	BS05 Whithill Quarry	BS05 Whithill Quarry	BS05 Whithill Quarry	BS05 Whithill Quarry

Potential Sites - not currently under consideration

NP01 Baker's Hanging	NP01 Baker's Hanging	NP01 Baker's Hanging	NP01 Baker's Hanging	NP01 Baker's Hanging
NP02 Bovington Farm	NP02 Bovington Farm	NP02 Bovington Farm	NP02 Bovington Farm	NP02 Bovington Farm
NP03 Gore Heath	NP03 Gore Heath	NP03 Gore Heath	NP03 Gore Heath	NP03 Gore Heath
NP04 Hurst Farm	NP04 Hurst Farm	NP04 Hurst Farm (see AS26 above)	NP04 Hurst Farm (see AS26 above)	NP04 Hurst Farm (see AS26 above)
NP05 Hyde Farm	NP05 Hyde Farm	NP05 Hyde Farm	NP05 Hyde Farm	NP05 Hyde Farm

Second Consultation on Sites: Mineral Sites Plan 2013 - 2014

Background

- 5.1 The purpose of the MSAD was to provide the detail on the location and working of individual sites. As the Minerals Strategy neared completion, work resumed on the identification of future mineral sites.
- 5.2 The Draft Mineral Sites Plan that was prepared for consultation in 2013-14 was essentially a re-presentation of sites nominated for inclusion in the Minerals Site Allocations Document, with some additional sites included (see Table 2 - Stages of Consultation – Sites Under Consideration at Each Stage above – second column, sites in blue text).
- 5.3 It was primarily intended for public update and information. Each site nomination underwent a preliminary assessment using the site assessment criteria proposed through the Minerals Strategy, to identify potential environmental, economic and social impacts.
- 5.4 These site assessments can be seen at:
http://consult.dorsetforyou.com/portal/minerals_and_waste/mineral_sites_plan?tab=files
- 5.5 A briefing note was sent out to all Dorset, Bournemouth and Poole Council Members on 20 November 2013, informing members of the forthcoming consultation and consultation arrangements.

What did we consult on?

- 5.6 The Bournemouth, Dorset & Poole Minerals & Waste Policy Joint Advisory Committee approved consultation on the Waste Plan and Mineral Sites Plan on 6 December 2013. Consultation on these site nominations took place over an 8-week period, from 19 December 2013 to 13 February 2014, using a variety of methods.
- 5.7 Although progress in site allocation had already been made through the work carried out in developing the MSAD, given the long break needed to complete the Minerals Strategy it was felt that a 're-start' was necessary. To re-start the process, and to assist in identifying any sites which had become available since 2009, a new 'Call for Sites' was issued in 2012, and a combination of further nominations together with the remaining MSAD sites gave a current total of 44 site nominations. Further information on the various calls for sites can be made available if required.

Who was invited to comment?

- 5.8 Information on the consultation was placed on www.dorsetforyou.com/mineral-sites The Draft Mineral Sites Plan was published on our consultation portal on 19 December 2013. This was a full online version of the document, on which respondents could comment online. A direct link to the consultation portal was included on the above webpage, as well as a .pdf of the Waste Plan Issues Paper and a response form. Information was also placed on Bournemouth Borough Council's and Borough of Poole's websites.
- 5.9 Notifications informing the public of the consultation were sent during the week commencing 16 December 2013, with those with an email address receiving email notification on 18 December. A newsletter summarising both the Waste Plan Issues Paper and Mineral Sites Plan was attached. A breakdown of respondent groupings is shown in [Table 3](#) below.
- 5.10 All those with an email address also received an email notification of the opening of the consultation portal on 19 December.
- 5.11 A poster was produced and sent to all Parish Councils with a request that they display this on their parish noticeboards. Posters were also sent to all libraries in Dorset, Bournemouth and Poole, and to district and borough councils in Dorset. In addition, posters were placed in public locations including in shop windows/supermarket noticeboards in areas particularly affected by either the Mineral Sites Plan or Waste Plan Issues Paper.
- 5.12 A reminder email was sent to all Parish Councils on 27 January 2014 to remind them to respond to the consultation.

Table 3 – Overview of Consultees 2013-2014

Consultation Group	Examples of consultees in group	Documents sent
Specific Consultation Bodies	Environment Agency, English Heritage, Natural England, Highways Agency; utility companies	Letter, leaflet
Adjoining authorities	Adjoining County & District councils; adjoining Parish Councils	Leaflet (by post or email)
Parish & Town Councils within Dorset	Full list available on request	Letter, poster, leaflet, response form
Dorset District Councils	Christchurch, East Dorset, North Dorset, West Dorset, Weymouth & Portland and Purbeck.	Letter, 4x Waste Plan Issues Paper and Draft Mineral Sites Plan (to be circulated to Chief Executive, Head of Planning, planning department and one to go on deposit), poster, leaflets, response forms.
Poole & Bournemouth Councils		Letter, 25x Waste Plan Issues Paper and Draft Mineral Sites Plan, response forms, leaflets, posters.
General Consultation Bodies	Voluntary bodies; Bodies representing the interests of different racial, ethnic, national, religious or disabled persons; Bodies representing the interests of persons carrying out business.	Leaflet (by post or email)
Other Consultees	Environmental groups, consultants, landowners, transport groups, community groups, businesses, housing associations, education groups	Leaflet (by post or email)
Minerals and Waste Industry		Letter, leaflet (by post or email)
MP/MEP	All Dorset, Poole and Bournemouth MPs and MEPs	Letter (from Director for Environment), leaflet.
Internal consultees	Full list available on request.	Email providing website link

Consultation Group	Examples of consultees in group	Documents sent
Poole Contacts	List available on request – provided by the Borough of Poole	Leaflet (by email)
Poole Residents Associations	List available on request – not included within Dorset SCI	Leaflet
Libraries	All libraries within Dorset, Bournemouth and Poole	Memo, leaflets, response forms and poster
Other interested people	Residents who previously registered an interest, people who made comments on the MSAD Discussion Paper.	Leaflet (by post or email)

NB: A breakdown of the organisations included within each subdivision can be found in the Dorset Statement of Community Involvement (SCI) unless otherwise stated.

How were they invited to comment?

- 5.13 A briefing note was sent out to all Dorset, Bournemouth and Poole Council members on 20 November 2013, informing members of the forthcoming consultation and consultation arrangements.
- 5.14 On 21 November 2013, advanced notice of the forthcoming consultation was sent to all Parish Councils in Dorset, as well as relevant residents' associations in Bournemouth and Poole. Those with an email address were sent an email and those without an email address were posted a letter.
- 5.15 The email/letter advised Parish Councils of the dates of the consultation, the subject of the two consultation documents and the date of the Joint Advisory Committee. It also advised of provisional dates for exhibitions planned as part of the consultation and asked Parish Councils to assist in publicising the consultation by including articles in their newsletters and/or on their websites. A number of responses were received and articles sent where requested.
- 5.16 This was followed up with an email on 5 December 2013 to those parishes that had not responded but that had a nominated site contained within the Mineral Sites Plan within their Parish to advise them as such and offer information for their newsletter/website.

Exhibitions

- 5.17 A series of exhibitions were arranged across the county, as detailed in Table 4 below. Details of the exhibitions were made available on the councils' websites and were included in consultee notifications, on posters and in press releases.

Table 4 - Schedule of Exhibitions 2013-2014

Location	Date/Time
Burton Green United Reformed Church Hall, Christchurch	Wednesday 8 Jan, 3pm-7pm
Tesco, Portland	Thursday 9 Jan, 3pm-7pm
Wareham Corn Exchange	Monday 13 Jan, 3pm-7pm
Dorchester Library	Tuesday 14 Jan, 12pm-4pm

Location	Date/Time
Crossways Village Hall	Wednesday 15 Jan, 3pm-7pm
Verwood Memorial Hall	Thursday 16 Jan, 3pm-7pm
Hurn Bridge Sports Club	Tuesday 21 Jan, 3pm-7pm
Langton Matravers Village Hall	Wednesday 22 Jan, 3pm-7pm
Sherborne Digby Memorial Hall	Thursday 23 Jan, 9am-11.15am
Poole Civic Centre Committee Suite	Monday 27 Jan, 2:30pm-6:30pm
Muscliff Community Centre	Wednesday 29 Jan, 3pm-7pm
Shaftesbury Town Hall, Council Chamber	Thursday 30 Jan, 10am-12noon

5.18 In addition to the scheduled exhibitions, officers attended and gave a talk at the following meetings at the request of the organisers:

- Presentation at Langton Matravers Village Hall following Exhibition – 22/01/14
- East Dorset Environment Theme Action Group, Wimborne – 05/02/14
- Sandford Parish Council Meeting – 10/02/14

Press Notifications

5.19 Run of paper advertisements were placed in the following local newspapers at the beginning of the consultation period, on 19 December 2013:

- Bridport News
- Western Gazette
- Dorset Echo
- Bournemouth Daily Echo

5.20 A press release was distributed to the local media on 20 December 2013. It was also tweeted on 2 January 2014 and appeared under the News section of www.dorsetforyou.com. An additional press release focussed on the eastern part of the county (including Purbeck and Bournemouth) was distributed to relevant media on 10 January 2014.

5.21 Table 5 below lists the known press coverage received as a result of the two press releases.

Table 5 – Press Coverage 2013-2014

Media	Date
Blackmore Vale Magazine	19.12.13
Dorset Echo	30.12.13
Daily Echo	01.01.14
View from Dorchester	03.01.14
Western Gazette	05.01.14
BBC Radio Solent (Interview)	06.01.14

Media	Date
Dorset Echo	09.01.14
Blandford People (online)	09.01.14
Weymouth People (online)	09.01.14
Daily Echo	01.02.14
Christchurch People (online)	
BBC Radio Solent (Interview)	06.02.14
Salisbury Journal	10.01.14
BBC News	13.02.14

Digital Media

- 5.22 From 2 January 2014, the minerals and waste consultations were shown as 'Featured Content' on the homepage of www.dorsetforyou.com. The minerals and waste consultation was also featured on the consultation tracker on www.dorsetforyou.com for the duration of the consultation period. A link to the consultation tracker appeared as the main feature on the dorsetforyou.com homepage at intervals during January and February.
- 5.23 A number of posts using Dorset County Council's Facebook and Twitter accounts were also made to help to publicise the consultation, as summarised in Table 6. Dorset County Council's Facebook page at the time had 1,776 'likes'. Dorset County Council's Twitter feed had 9,276 followers, Bournemouth Borough Council's Twitter feed had 9,118 followers and Borough of Poole's Twitter feed had 5,615 followers.

Table 6 – Social Media 2013-2014

Media	Date	Subject
Twitter (DCC)	02.01.14	Have your say - minerals
Twitter (BBC)	02.01.14	Have your say - minerals
Facebook (DCC)	06.01.14	General information on minerals and waste consultation
Facebook (No to Purple Haze)	06.01.14	General information on consultation, plus Verwood exhibition and Purple Haze site
Twitter (DCC)	09.01.14	Portland exhibition
Twitter (DCC)	13.01.14	Wareham exhibition
Twitter (DCC)	15.01.14	Crossways exhibition
Twitter (DCC)	21.01.14	Hurn exhibition
Twitter (DCC)	22.01.14	Langton Matravers exhibition
Twitter (BoP)	24.01.14	Poole exhibition

Media	Date	Subject
Facebook (BoP)	24.01.14	General information on minerals and waste consultation
Facebook (BBC)	24.01.14	General information on minerals and waste consultation
Twitter (BBC)	27.01.14	Muscliff exhibition
Facebook	03.02.14	Response to post on Sculpture by the Lakes page

Sustainability Appraisal

5.24 An updated Waste & Minerals Sustainability Appraisal Scoping Report was prepared in 2013. In accordance with Article 5 of the SEA Directive, a five-week consultation period was held with the statutory environmental consultees, as well as the Local Nature Partnership and the Local Economic Partnership, from 28 October to 2 December 2013. Responses to the consultation informed the final version of the scoping report.

Engagement with the Dorset Local Enterprise Partnership (DLEP)

5.25 The Mineral Planning Authority has a responsibility to engage with the DLEP during the preparation of planning policy documents. On 27th November 2014 a report was presented to the DLEP. The report considered the positive contribution that waste planning makes to Dorset's economy and updated members of the Dorset Local Enterprise Partnership (DLEP) on the preparation of the Waste Plan (and other Planning Policy documents). The report also sought a view from DLEP on how it might wish to be engaged during plan preparation and beyond.

5.26 In response the DLEP board requested to receive regular updates at key stages of plan preparation.

What response did we get?

5.27 During the period of the consultation, 1,111 respondents made 1,596 representations. The comments made on each site have been summarised, and can be seen at:

<https://www.dorsetforyou.gov.uk/article/416088/Mineral-Sites-Plan-Consultation-Outcomes> .

5.28 In addition, some new sites were nominated following the consultation. These are shown at:

<https://www.dorsetforyou.gov.uk/article/411960/Preparing-the-Mineral-Sites-Plan---whats-happened-so-far>

5.29 The new sites at 2014 were:

- Crack Lane, Langton Matravers, Purbeck: Purbeck Marble site, approximately 0.5ha. Located at the northern end of Crack Lane (north of Langton Matravers) where it meets the A351. To be worked in summer campaigns, according to demand.
- Gallows Gore, Harmans Cross, Purbeck: Purbeck Stone site, located approximately 150m north of B3069 and adjacent to Haycrafts Lane, south of and adjacent to previous site nomination Quarr Farm.
- Hurst Farm, Moreton: Sand and gravel site, located north/west of the B3390, north of Hurst Heath and south of the River Frome.
- Station Road, Moreton: Sand and gravel site, located south/east of the B3390 and south of Station Road.
- White's Pit aggregate recycling facility at White's Pit Landfill Site, Arrowsmith Road, Wimborne (pdf, 526kb)

What did we do about it?

- 5.30 The comments submitted helped the Mineral Planning Authority refine its knowledge of the site nominations, and developed the evidence base. Some sites were withdrawn in response to comments received, or for other sites the Mineral Planning Authority informed the nominee that the site was unlikely to progress given the level of constraints faced, leading to the site being withdrawn e.g. Gore Heath at Sandford.
- 5.31 Threats to amenity were raised by respondents, particularly local residents, and these were addressed, where appropriate. Comments were received from professional and technical sources. This contributed to the preparation of a draft version of the Plan, the subject of the next consultation.

Third Consultation on Mineral Sites: Draft Mineral Sites Plan 2015

Background

- 6.1 Consultation on the Draft Mineral Sites Plan took place from 15 July to 23 September 2015, for a 10-week period. A consultation on the Draft Waste Plan also took place over the same period. The two documents were consulted on jointly using similar consultation methods, as explained below.
- 6.2 The Draft Mineral Sites Plan was this time presented as a draft plan, with draft policies for site allocation, as well as proposals for an Aggregates Area of Search, the Puddletown Road Policy Area and mineral site safeguarding.
- 6.3 During the consultation 1,299 representations were received from 746 consultees (individuals and organisations). Although there was some support for specific sites along with support for the proposed Puddletown Road Area and the safeguarding proposals, comments were generally opposed to the future mineral development (with some sites eliciting strong criticism) and the perceived associated impacts of mineral development.

Preparing for the Consultation

- 6.4 A Minerals and Waste Planning Members Seminar was held on 12 May 2015. All Members of Bournemouth, Dorset and Poole were invited to attend this event to discuss the development of the Bournemouth, Dorset and Poole Mineral Sites Plan and Draft Waste Plan, prior to public consultation in summer 2015.
- 6.5 Dorset County Council Cabinet considered the recommendation of the Environment Overview Committee on 8 July for the purposes of public consultation of the Waste Plan and Mineral Sites Plan. The proposed consultation was also considered by the relevant committees of Bournemouth and Poole Councils.
- 6.6 On 4 June 2015, advanced notice of the forthcoming consultation was sent to all Parish/Town Councils in Dorset. Those with an email address were sent an email and those without an email address were posted a letter. The email/letter advised Parish Councils of the dates of the consultation and a summary of the two consultation documents. It also advised of the exhibitions planned as part of the consultation and asked Parish Councils to assist in publicising the consultation by including articles in their newsletters and/or on their websites. A number of responses were received and further information was sent to parish councils where requested.
- 6.7 This was followed up with an email on 22 June to those parishes that had not responded but that had mineral proposals and/or waste site options within their Parish to advise them as such and offer information for their newsletter/website.
- 6.8 On 8 July, an article about the forthcoming consultation was included in the county council's newsletter for Members.
- 6.9 Working with Dorset County Council Communications team, a Communications Plan was prepared with the following objectives;
 - To encourage the public to respond to the plans
 - To reduce misunderstandings amongst respondents
 - Eliciting representations from respondents for all sites

What did we consult on?

- 6.10 The Mineral Sites Plan 2015 set out draft site allocations included sites that were not discounted as a result of previous assessment/consultation work, and were included as proposed site allocations, alongside relevant allocation policies. The Draft Plan also proposed:
 - an aggregates Area of Search to provide greater certainty that the Mineral Planning Authority could meet the necessary levels of aggregate supply over the Plan period
 - a Puddletown Road Policy Area to seek to secure integrated and long-term site management and restoration in the Puddletown Road area, and

- measures to develop the mineral safeguarding approach of the Minerals Strategy, through improved safeguarding of existing mineral operations through the Plan area.

6.11 The following background papers were also available throughout the consultation;

- Habitats Regulations Assessment Screening Report
- Puddletown Road Background Report
- Draft Mineral Sites Plan Site Options - HRA Screening
- Draft Mineral Sites Plan Policies - HRA Screening
- Sustainability Appraisal
- Area of Search (Sand & Gravel)
- Puddletown Road Area Policy

Sustainability Appraisal

6.12 A Draft Sustainability Appraisal was undertaken, and was available during the consultation, on the Mineral Planning Authority website.

Habitat Regulations Appraisal

6.13 A Habitat Regulations Appraisal screening exercise was carried out for the proposed site allocations, and the plan policies. These were also available on the Mineral Planning Authority website during the consultation.

Who was invited to comment?

- 6.14 Information on the consultation was placed on www.dorsetforyou.com/mineral-sites The Draft Mineral Sites Plan was published on our consultation portal. This was a full online version of the document, on which respondents could comment online. A direct link to the consultation portal was included on the above webpage, as well as a .pdf of the Mineral Sites Plan and a response form. Information was also placed on Bournemouth Borough Council and Borough of Poole's websites, with links to the dorsetforyou.com website.
- 6.15 The consultation targeted stakeholders identified through the Statement of Community Involvement, as indicated in Table 7 below, along with individuals/groups reached by the various consultation approaches used.

Table 7 – Overview of consultees 2015

Consultation Group	Examples of consultees in group
Specific Consultation Bodies	Environment Agency, English Heritage, Natural England, Highways Agency; utility companies
Adjoining authorities	Adjoining County & District councils; adjoining Parish Councils
Parish & Town Councils within Dorset	Full list available on request
Dorset District Councils	Christchurch, East Dorset, North Dorset, West Dorset, Weymouth & Portland and Purbeck.
Poole & Bournemouth Councils	
General Consultation Bodies	Voluntary bodies; Bodies representing the interests of different racial, ethnic, national, religious or disabled persons;

Consultation Group	Examples of consultees in group
	Bodies representing the interests of persons carrying out business.
Other Consultees	Environmental groups, consultants, landowners, transport groups, community groups, businesses, housing associations, education groups
Minerals and Waste Industry	
MPs/MEPs	All Dorset, Poole and Bournemouth MPs and MEPs
Internal consultees	Full list available on request.
Poole Contacts	List available on request – provided by the Borough of Poole
Poole Residents Associations	List available on request – not included within Dorset SCI
Libraries	All libraries within Dorset, Bournemouth and Poole
Other interested people	Residents who previously registered an interest, people who made comments on the MSAD Discussion Paper.

How were they invited to comment?

- 6.16 Notifications informing people of the consultation were sent during the week commencing 13 July, with those with an email address receiving email notification on 15 July. A leaflet summarising both the Waste Plan Issues Paper and Mineral Sites Plan was attached.
- 6.17 All those with an email address received also received an automatic email notification of the opening of the consultation portal.
- 6.18 A poster was produced and sent to all Parish Councils with a request that they display this on their parish noticeboards. Posters were also sent to all libraries in Dorset, Bournemouth and Poole, and to district and borough councils in Dorset. In addition, posters were placed in public locations including in shop windows/supermarket noticeboards in areas where exhibitions were planned.
- 6.19 Copies of the consultation documents were sent to the Dorset District and Borough Councils including one copy to be made available for the public to view. Copies of the consultation documents were also made available at the planning offices of Bournemouth, Dorset and Poole Councils.
- 6.20 Libraries throughout Bournemouth, Dorset and Poole were also send copies of the Minerals and Waste leaflet and posters.
- 6.21 Although not required by the Statement of Community Involvement, letters were sent to households within 100m of sites under consideration for allocation in the Draft Mineral Sites Plan. In addition, notices were placed in public places around the proposed site allocations .
- 6.22 Examples of the letters and notices can be seen at Appendix 2.

Exhibitions

- 6.23 A series of exhibitions were arranged across the county, as detailed in Table 8. Details of the exhibitions were made available on the councils' websites and were included in consultee notifications, on posters and in press releases.

Table 8 – Schedule of Exhibitions 2015

Date	Exhibition
Wed 29 July	Brownsword Hall, Dorchester 3 - 7 pm
Thurs 30 July	Swans Yard, Shaftesbury 10am-2pm
Fri 31 July	Wimborne Market 9 – 1pm
Tue 4 Aug	Langton Matravers village hall 3-7pm
Thurs. 6 Aug	Burton village hall 3-7pm
Mon 10 Aug	Blandford Corn Exchange 3-7pm
Tue 11 Aug	Portland Tesco 3-7pm
Wed 12 Aug	Bearwood Community Centre 3-7pm
Thurs. 13 Aug	Hurn Bridge Sports Club 3-7pm
Tue 18 Aug	Kinson Hub, Bournemouth 3 – 6.30pm
Tue 1 Sept	Dorchester Library 3 -6.30pm
Wed 2 Sept	Ferndown Tesco 3 – 7pm
Thurs. 3 Sept	Moreton village Hall 3-7pm
Mon 7 Sept	Orchard Park Garden Centre, Gillingham 1-5:30pm
Wed 9 Sept	Wareham Corn Exchange 3-7pm

6.24 In addition to the scheduled exhibitions, officers attended and gave presentations at the following meetings at the request of the organisers:

- Dorset Association of Town and Parish Council Meeting – Sherborne & Weymouth
- East Dorset Environmental Partnership Meeting – Colehill
- Winfrith Parish Council

Dorchester Town Council

Your Dorset

6.25 An article was published in Your Dorset including an explanation of the consultation and a list of exhibitions. This was distributed to all households in Dorset during the week commencing 15th July 2015.

6.26 No edition of Poole News was published at an appropriate time for this consultation. Instead, details of the consultation were included within the Borough of Poole's general Planning email bulletin which was sent out on 11 August 2015.

Press

6.27 A press release was distributed to the local media on at the start of the consultation and a reminder was sent towards the end of the consultation period.

6.28 Table 9 lists the known press coverage received as a result of the press releases. This list primarily includes those articles related to the Waste Plan, there were a number of additional articles that articles related directly to a number of controversial mineral sites.

Table 9 – Press Coverage 2015

Media	Date	Subject
Dorsetforyou.com Dorset Newsroom	20th July 2015	Have your say on future of plans for minerals and waste
Dorset Echo	16th July 2015	Council invites views on future of Dorset's minerals and waste
Dorset Echo	20th July 2015	Have your say on future of plans for minerals and waste
Bournemouth Daily Echo	28 July 2015	Have your say on where new waste facilities could be located
Bournemouth Daily Echo	8th August 2015	Meetings on waste and quarrying plans in Dorset
Meridian - ITV News	8th August 2015	Public to be asked about Dorset's needs for next 16 years
Dorset Echo	26 August 2015	Last chance to have your say on future of plans for minerals and waste
BBC South Today	19 October 2015	Piece shown on South Today about the proposed quarrying – including interviews with those for and against the proposed quarries, and representative on Mineral Planning Authority.

Digital Media

- 6.29 Details of the consultation were shown as 'Featured Content' on the homepage of www.dorsetforyou.com. The minerals and waste consultation was also featured on the consultation tracker on www.dorsetforyou.com for the duration of the consultation period. A link to the consultation tracker appeared as the main feature on the dorsetforyou.com homepage at intervals during the consultation.
- 6.30 During the consultation 3 paid Facebook adverts were taken out. In addition, a further 8 Facebook adverts and 15 tweets were undertaken mainly to coincide with the planning exhibitions.
- 6.31 The following outputs were achieved;
- Facebook adverts – 12,277 people had the opportunity to see it
 - Facebook posts – 5,200 total reach
 - Twitter posts – 206,500 total reach
 - e-newsletter sent to 36,345
- 6.32 As a result, the following Web visits have been recorded;
- 249 clicks from social media
 - 683 clicks from Facebook adverts
 - 3,704 clicks from e-newsletter

- Total of 1,059,576 page views

Dorset Local Enterprise Partnership

6.33 A report was presented to the DLEP on the 28 July 2015. The report summarised the progress being made on the Waste Plan and the proposals contained in the consultation Draft Waste Plan. The Waste Planning Authority invited comments from the DLEP on the Draft Waste Plan policies and/or site options. No responses or comments were made by Board members as a result of this report.

What response did we get?

- 6.34 During the consultation 1,299 representations were received from 746 consultees (individuals/organisations). Although there was some support for specific sites along with support for the proposed Puddletown Road Area and the safeguarding proposals, comments were generally opposed to the future mineral development and the perceived associated impacts.
- 6.35 Concerns related principally to adverse impacts of proposed development, including cumulative impacts, increased quarry traffic, loss of recreation, effects upon enjoyment of the countryside, impacts on property values, economic impacts, harm to nature conservation and/or heritage assets and visual/landscape impacts.
- 6.36 In the Moreton/Crossways/Woodsford area, three site allocations are proposed and these have coincided with potential housing proposals in Purbeck District Council's Local Plan Review along with actual/potential housing development around Crossways in West Dorset District Council. Together these have resulted in significant levels of concern of over-development. Residents/respondents also sought reassurance that the three planning authorities were working together to take into consideration cumulative impacts, particularly on traffic issues.
- 6.37 Three petitions were received during the consultation:
- Petition submitted by Moreton Parish Council, titled: "Do you want quarries on Hurst Farm and Station Road?" This had 210 signatories.
 - Petition submitted by TE Lawrence Society (online petition), titled: "Let Lawrence of Arabia Rest in Peace" This had 454 signatories.
 - Petition submitted by Knightsford Parish Council, titled: "Are you against the Woodsford Quarry extension?" This had 40 signatories.
- 6.38 At Swanworth, near Worth Matravers in Purbeck, an extension of the existing Swanworth Quarry in the Area of Outstanding Beauty has generated high levels of support both for and against the proposal. It is generally the case that aggregate sites, including Swanworth (which primarily produces crushed rock), generate the greatest interest. This is to be expected, given that they are bigger quarries usually with greater impacts and generally located in more populated parts of the Plan area. The smaller building stone quarries of Purbeck and in the north of the county have not seen such levels of opposition.
- 6.39 Summaries of the responses received (for sites and for non-site related issues/policies) with brief comments from the Mineral Planning Authority can be seen at: <https://www.dorsetforyou.gov.uk/article/411960/Preparing-the-Mineral-Sites-Plan---Consultations-and-Responses>

What did we do about it?

- 6.40 As with previous consultations, the comments made and issues raised were helpful in refining the evidence base for the Draft Plan and the proposed sites. An example of an issue which the Mineral Planning Authority was able to follow up on was the extended Conservation Area at Moreton and the effect on the proposed sites in the vicinity; the Aggregates Area of Search and the need to remove more land within the proposed area due to ecological constraints.
- 6.41 Table 3 above shows the progress of sites through this consultation stage.

Fourth Consultation on Mineral Sites: Draft Mineral Sites Plan 2016

Background

- 7.1 Since the previous consultation, in response to the issues raised in consultation, preparation of the Mineral Sites Plan has included:
- further assessment, evidence gathering and analysis and consideration of potential site allocations, in light of comments made, to ensure that the sites ultimately selected for the Plan will be capable of providing the necessary supply of minerals;
 - the identification of potential impacts and relevant mitigation recommendations for allocated sites;
 - the review and consolidation of the relevant assessment work and evidence base that will be required for the Plan Examination;
 - the implications of extending the Mineral Sites Plan end date to 2032 to ensure a 15-year Plan period and seeking to ensure adequate aggregate supply for this plan period;
 - additional sites (see below).
- 7.2 Reports have been prepared listing all the comments made to 2016 Mineral Sites Plan Update consultation. An initial officer response is provided explaining, where relevant, changes proposed to the Plan to address issues raised.

What did we consult on?

- 7.3 The Bournemouth, Dorset and Poole Joint Advisory Committee met on the 13 May 2016. The committee authorised officers to carry out public consultation on the 'Draft Mineral Sites Plan Update 2016'.
- 7.4 Consultation on the Draft Mineral Sites Plan Update took place from 26 May to 21 July 2016, for an 8-week period. A consultation on the Draft Waste Plan also took place over the same period. The two documents were consulted on jointly using similar consultation methods, explained below.
- 7.5 The Draft Mineral Sites Plan 2016 was not a full consultation, but as the name implied an updating opportunity. It included:
- A fresh analysis of aggregate demand and supply, based on more recent (2014) aggregate sales and reserves data
 - A proposed re-alignment of the Puddletown Road Policy Area boundary, as suggested in previous comments
 - A review and amendment of the areas/boundary of the Aggregates Area of Search
 - An update on site options, including new sites and sites that the Mineral Planning Authority had previously indicated might not be needed
- 7.6 The consultation complied with the adopted Dorset Statement of Community Involvement (SCI), to which the relevant SCI's for Bournemouth and Poole defer on matters of minerals and waste. Consultation included emails and/or letters to consultees, documents being made available at council offices and electronic (web based) publication of all documents on Dorsetforyou.com (with links from the websites of Bournemouth and Poole).
- 7.7 No exhibitions or public meetings were proposed, although specific requests for presentations to parish councils and community groups were considered. Residents living within the immediate vicinity of the proposed additional minerals sites were contacted directly.
- 7.8 The following documents were also made available to support the emerging Mineral Sites plan:
- Sustainability Appraisal 2016 - Draft Mineral Sites Plan
 - Habitats Regulations Screening Report for Draft Mineral Sites Plan 2016

- 7.9 Site appraisals for each of the site options shown in the Draft Mineral Sites Plan 2016 are available. The site appraisals can be viewed or downloaded from the Consultation Portal for Draft Mineral Sites Plan Update 2016 here:
http://consult.dorsetforyou.com/portal/minerals_and_waste/draft_msp_update/draft_mineral_sites_plan_update_2016?tab=files

Who was invited to comment?

- 7.10 This consultation included stakeholders and groups identified through the Statement of Community Involvement, along with individuals/groups reached by the various consultation approaches used.

How were they invited to comment?

- 7.11 Information on the consultation was placed on www.dorsetforyou.com/mineral-sites. The Draft Mineral Sites Plan was published on our consultation portal. This was a full online version of the document, on which respondents could comment online. A direct link to the consultation portal was included on the above webpage, as well as a .pdf of the Mineral Sites Plan and a response form. Information was also placed on Bournemouth Borough Council and Borough of Poole's websites.
- 7.12 During April 2016, advanced notice of the forthcoming consultation was sent to all Parish/Town Councils in Dorset. Those with an email address were sent an email and those without an email address were posted a letter. The email/letter advised Parish Councils of the provisional dates of the consultation and a summary of the two consultation documents. It also asked Parish Councils to assist in publicising the consultation by including articles in their newsletters and/or on their websites. A number of responses were received and articles sent where requested.
- 7.13 The following articles are known about but there may be others;
- Maiden Newton Parish Council Facebook Page. A copy was also pinned up on the Parish Council notice board.
- 7.14 Information relating to the consultation was placed on www.dorsetforyou.com/mineral-sites and via the authority's consultation tracker. Appropriate links were included on the websites of Bournemouth and Poole.
- 7.15 The Draft Mineral Sites Plan Update was published on our consultation portal prior to the start of the consultation. This was a full online version of the document which people could comment on online. A direct link to the consultation portal was included on the above webpage, as well as a pdf of the Draft Mineral Sites Plan Update and supporting information.
- 7.16 Notifications informing people of the consultation were sent during the week commencing 23 May 2016, with those with an email address receiving email notification on 26 May. All those with an email address also received an automatic email notification of the opening of the consultation portal.
- 7.17 Copies of the consultation documents were sent to the Dorset District and Borough Councils including one copy to be made available for the public to view. Copies of the consultation documents were also made available at the planning offices of Bournemouth, Dorset and Poole Councils.
- 7.18 Libraries throughout Bournemouth, Dorset and Poole were informed of the consultation and asked to refer the public to our website if requiring information about the Waste Plan consultation. On the 8 June a member of the public made a request that the consultation document and response forms be made available in Ferndown library. This request was met immediately.

Direct Contact

- 7.19 Properties within 100m of the site allocations contained in the Draft Plan were written to at the start of the consultation. Details of where they could find out more information about proposals was provided. Examples of the letter can be seen at Appendix 2.

Site Notices

- 7.20 Site notices were displayed in appropriate locations for all sites contained in the Update Draft Plan. A Plan of the proposal and details of where to find out more information was included. Examples of the notices can be seen at Appendix 2.

Meetings/Presentations

- 7.21 No exhibitions were arranged for this consultation. Corfe Castle Parish Council requested that an officer attend a meeting convened at Corfe Castle Parish Hall on 11 July 2016, to speak particularly on the Swanworth proposal

Your Dorset

- 7.22 The timing of the publication of 'Your Dorset' did not align with the consultation. However, an article was included within the Spring 2016 edition which thanked stakeholders for their views on waste sites made during the 2015 consultation period. The article summarised the number of comments received, the key issues that arose and explained that there would be a further opportunity to comment on the Plan later this year with a link to our website for further details.

Press

- 7.23 A press release was distributed to the local media to tie in with the start of the consultation, during early July and at the end of the consultation. It was also tweeted ... and appeared under the News section of www.dorsetforyou.com
- 7.24 Table 10 lists some of the press coverage received as a result of the press releases.

Table 10 – Press Coverage

Media	Date	Subject
Dorset Echo	26 May 2016	Consultation on potential mineral and waste sites in Dorset
Mags4Dorset	1 June 2016	Have your say on draft Mineral and Waste strategy
Newsonplace.com	3 June 2016	Consultation starts on draft Mineral and Waste strategy (Dorset County Council)

Digital Media

- 7.25 The minerals and waste consultation was featured on the consultation tracker on www.dorsetforyou.com for the duration of the consultation period.

Member Update – Sept 2016

- 7.26 In September 2016 an Autumn update summarising the outcomes of the 2016 summer consultation was sent to all Dorset County Council, Bournemouth Borough Council and the Borough of Poole Councillors. The email was also forwarded to planning colleagues of the district/borough councils for them to send onto their local Members.

Further Press Coverage

- 7.27 Following the consultation, a further press release was issued providing a brief summary of the outcomes of the consultation and link to the website where a summary of outcomes for each site was available.
- Bournemouth Echo - Hundreds have their say on mineral site and waste centre plans (23/09/16)
http://www.bournemouthecho.co.uk/news/14760438.Hundreds_have_their_say_on_mineral_site_and_waste_centre_plans/?ref=rss

View News (September 27, 2016)

- An article was also included in the autumn 2016 edition of Your Dorset.

Sustainability Appraisal

7.28 Sustainability appraisal was undertaken on the mineral site options. The full version of the sustainability appraisal was available throughout the consultation on the county council's website.

Engagement with the Dorset Local Enterprise Partnership

- 7.29 A report was presented to the DLEP on 28 July 2016. DLEP board members were asked to note the progress being made on the Waste Plan. The Waste Planning Authority also invited any comments that the DLEP may wish to make on the Waste Plan consultation document. Although this meeting fell outside the formal consultation period, board members were assured that would be accepted up till the end of August 2016.
- 7.30 In response the LEP raised concerns to one of the sites contained in the Draft Waste Plan. As a result, officers of the Minerals and Waste Planning Authority met with the LEP to discuss issues of concern. Following this meeting a further report was presented to the LEP board on 27 Sept 2016. The LEP did not raise any issues regarding minerals. Further information on contact with the LEP is recorded in the Duty to Cooperate Statement, which can be seen on our website.

Background Papers

- 7.31 Detailed site assessments for each of the sites included in the consultation document were prepared and made available on-line via the minerals and waste consultation portal. Many requests for hard copies were also made and sent during the consultation period.
- 7.32 The following documents were also available to support the emerging waste plan:
- Habitats Regulations Assessment Screening Report - Update for Additional Sites 2016
 - Sustainability Appraisal – Updates for new sites

What response did we get?

- 7.33 Approximately 240 responses were received from 152 contributing consultees (individuals/organisations).
- 7.34 **Aggregate provision figures for 2014:** The main issue relating to this update is that some respondents continue to challenge the proposed allocation of some of the aggregates sites on the grounds that there is an adequate supply of River Terrace sand and gravel, and no new sites are required.
- 7.35 **Aggregates Area of Search:** The proposed revision to the boundary of the Area of Search for future aggregates sites, removing environmental designations and undesignated land of importance to biodiversity, was generally well received.
- 7.36 **Puddletown Road Area of Search:** the proposed revision to the boundary, making it more relevant to features on the ground, was generally well received, although concerns about proximity to river corridors was expressed.
- 7.37 **Potential site allocations:** Four potential site allocations were included, three of which had been previously made public and one (comprising two separate areas) that was identified during the 2015 consultation. Brief summaries of the issues raised are set in the table below.
- 7.38 In addition to these sites, some comments were received on other sites which are still under consideration but were not included in this consultation as there had been no change in their status. These included the Moreton sites AS25 Station Road and AS26 Hurst Farm, and AS19 Woodsford Extension. There were further objections to these proposed sites.
- 7.39 More information on the responses can be seen at:
http://consult.dorsetforyou.com/portal/minerals_and_waste/draft_msp_update/draft_mineral_sites_pla_n_update_2016?tab=list

Table 11 – Summary of Responses to Site Nominations

Site option/proposed facility	Summary of issues
<p>AS28 Gallows Hill (Areas A & B) Provision of aggregates</p>	<p>These two areas were identified in the 2015 consultation. Very little information has been made available by the site nominees, and there were strong objections to these areas. Issues/impacts raised included:</p> <ul style="list-style-type: none"> • Lack of information provided, on the site and the possible working and restoration; • amenity, dust, noise; visual and landscape; • Scheduled Ancient Monument; Rights of Way; difficult or impossible to mitigate many impacts; biodiversity; traffic; hydrology/hydrogeology; quality/quantity of mineral not proven; • cumulative impacts with Philliol’s Farm.
<p>AS12 Philliol’s Farm Provision of aggregates</p>	<p>This site has been previously under consideration, but the 2015 Draft Plan noted that it might not be required.</p> <p>However, in order to keep all options open for preparing the final draft of the Minerals Plan, it was included in this Update, noting that it was still potentially under consideration.</p> <p>Numerous objections were received, and issues/impacts raised included:</p> <p>Limited provision of information; amenity, dust, noise; visual and landscape; Rights of Way; difficult or impossible to mitigate many impacts; biodiversity, including on protected species and European designated land; traffic; hydrology/hydrogeology; quality/quantity of mineral not proven; cumulative impacts with other sites in the vicinity; negative impacts on local economy.</p>
<p>AS14 Henbury Farm (Sturminster Marshall) Provision of aggregates</p>	<p>This site has been previously under consideration, but the 2015 Draft Plan noted that it might not be required. However in order to keep all options open for preparing the final draft of the Minerals Plan, it was included in this Update, noting that it was still potentially under consideration.</p> <p>Strong objections have in the past been received, and although there were not such strong objections this time, issues/impacts raised were:</p> <p>Traffic impacts, especially access to/from the A31 and associated safety issues; potential impacts on hydrology/hydrogeology, as the site is within Source Protection Zone 1 associated with the nearby water extraction borehole.</p> <p>Other potential impacts include but are not limited to landscape/visual impacts and amenity impacts, and the need to provide information on quality/quantity of mineral present.</p>

Site option/proposed facility	Summary of issues
<p>PK 16 Swanworth Extension</p> <p>Provision of crushed rock</p>	<p>This site has been before the public previously, and in 2015 received both support and objection. The nominees have made further proposals seeking to minimise impacts, and for this reason the site was included in the most recent consultation.</p> <p>Further objections have been received, again focussing particularly on landscape (the proposed extension is in the Dorset AONB) issues and visual impacts, along with traffic issues.</p> <p>Potential impacts on water supply to Kingston village were also emphasised in this consultation</p>

What did we do about it?

- 7.40 As with previous consultations, the information received has been used to refine the evidence base, and to seek further information where it appears necessary/helpful. For example, the issue of hydrology was raised several times (in written responses and at the presentation to Corfe Castle Parish Council) regarding the Swanworth Quarry Extension. As a result, the site promoter was asked to carry out further work to address the issues raised. As a result, a hydrological study was commissioned and addressed the query raised.
- 7.41 The issues of hydrology was addressed also for the Sturminster Marshall site, and the hydrological risks were such that the site is no longer being considered.

Fifth Consultation on Mineral Sites: Pre-Submission Consultation - Draft Mineral Sites Plan 2017/2018

8.1 Consultation on the Pre -Submission Draft Mineral Sites Plan took place from 1 December 2017 and 31 January 2018. A consultation on the Draft Waste Plan also took place over the same period. This was a joint consultation, using the same approaches.

Pre-Consultation

8.2 On the 10 November 2017, an email was sent to County Councillors to advise them of the upcoming consultations and provisional consultation dates. A similar email was also sent to the District and Borough councils' planning departments with a request for the email to be forwarded onto their Councillors. Briefings on the Draft Plans and the subsequent stages were offered, with Purbeck District Council requested and receiving a briefing for their Members.

8.3 The Pre-Submission Draft Waste Plan and the Draft Mineral Sites Plan were considered by Dorset County Council's Economic Growth Overview and Scrutiny Committee on 16 October 2017, followed by Dorset County Council Cabinet on 18 October 2017. All the recommendations regarding Plan consultation and subsequent Submission to Secretary of State were agreed.

8.4 Bournemouth Borough Council's Planning Policy Steering Group agreed all the recommendations on the 3 November 2017. This was followed by Bournemouth Cabinet on Wednesday 8 November 2017, which also agreed the recommendations.

8.5 The Draft Waste Plan and Draft Mineral Sites Plan were presented to the Poole Overview and Scrutiny Committee on 7 November 2017, and recommendations were agreed.

8.6 A Communications Plan was prepared for the consultation, working with Dorset County Council's Communications Team. The plan had the following objectives;

- To inform and encourage public to respond to the plans
- To gain understanding amongst respondents
- Promote waste reduction, increase recycling rates, manage waste effectively and push encourage facilities to push waste up the waste hierarchy
- Ensure good management of the natural environment in Dorset

8.7 At the beginning on November 2017, advanced notice of the forthcoming consultation was sent to all Parish/Town Councils in Dorset. Those with an email address were sent an email and those without an email address were posted a letter. The email/letter advised Parish Councils of the provisional dates of the consultation and a summary of the two consultation documents. It also asked Parish Councils to assist in publicising the consultation by including articles in their newsletters and/or on their websites.

8.8 A number of requests for contributions to Parish newsletters or other communications were received, and information was sent where requested.

Who was invited to comment?

8.9 Once again this consultation included stakeholders and groups identified through the Statement of Community Involvement, along with individuals/groups reached by the various consultation approaches used.

How did we consult?

Notifications

- 8.10 Information relating to the consultation was placed on www.dorsetforyou.com/waste-plan and via the authority's consultation tracker. Appropriate links were included on the websites of Bournemouth and Poole.
- 8.11 The Pre-Submission Draft Waste Plan was published on our consultation portal prior to the start of the consultation. This was a full online version of the document which people could comment on online. A direct link to the consultation portal was included on the above webpage, as well as a pdf of the Waste Plan and supporting documents.
- 8.12 Notifications informing people of the consultation were sent in the post during the week commencing 27 November, with those with an email address receiving email notification on 1 December 2017.
- 8.13 All those with an email address also received an automatic email notification of the opening of the consultation portal.
- 8.14 A copy of the consultation document was sent to the Dorset District and Borough Councils to be made available for the public to view. Copies of the consultation documents were also made available at the planning offices of Bournemouth, Dorset and Poole Councils.
- 8.15 Libraries throughout Bournemouth, Dorset and Poole were informed of the consultation and asked to refer the public to the Dorset County Council minerals and waste website if requests for information on the minerals and waste consultation was received.

Neighbour Notification

- 8.16 All properties, both residential and commercial, within 250m of the proposed site allocations were written to at the start of the consultation. Details of the development proposed on the relevant site(s) and how residents could find out more information about proposals was provided. Examples are included in Appendix 3.

Site Notices

- 8.17 Site notices were displayed in appropriate locations for all sites contained in the consultation document. A Plan of the proposal and details of where to find out more information was included. Further information is provided in Appendix 3.

Meetings/Presentations

- 8.18 Officers attended and gave presentations at the request of the following organisations;
- Purbeck District Council – briefing for Members on 23rd November 2017
 - Moreton/Crossways Joint Working Group, held at Dorset County Council on 5th December 2017
 - East Dorset Environmental Partnership Meeting, Wimborne on 13th December 2017

Your Dorset

- 8.19 An article was included in the Autumn edition of 'Your Dorset' and circulated to properties throughout Dorset during mid-November. The article alerted readers to the publication of the Mineral Sites Plan and Waste Plan, subject to the approval of the three authorities. Given the timings of the publication it wasn't possible to provide detail on the content of the Mineral Sites Plan or Waste Plan. However, contact details and a web address was provided for readers to find out more.

Press

- 8.20 A press release was distributed to the local media to tie in with the start of the consultation. Table 12 lists the known press coverage received following the press releases. It will be updated during the consultation.

Table 12 – Press Coverage

Media	Date	Subject

Digital Media

- 8.21 The minerals and waste consultation was featured on the consultation tracker on www.dorsetforyou.com for the duration of the consultation period.
- 8.22 During the consultation period posts were made on the council's Facebook page and Twitter feed. Additionally, five paid Facebook adverts were taken out targeted at different geographic areas. Table 13 lists the outputs that were achieved. It will be updated.

Table 13 Social Media Outcomes

Media	Details	Outcome

Sustainability Appraisal

- 8.23 Sustainability appraisal was undertaken on the Pre-Submission Draft Mineral Sites Plan. The full version of the Sustainability Appraisal Report was available throughout the consultation on the county council's website.

Engagement with the Dorset Local Enterprise Partnership

- 8.25 A report was considered by the DLEP Board on 23 November 2017. DLEP board members were asked to note the progress being made by the Minerals and Waste Planning Authority on the Draft Mineral Sites Plan and Draft Waste Plan and their anticipated Submission to the Secretary of State. The Minerals and Waste Planning Authority also invited any comments that the DLEP may wish to make on the Minerals and Waste Plans consultation document.

Responses to the Pre-Submission Draft Mineral Sites Plan

- 8.26 Representations made to the Pre-Submission Draft Mineral Sites Plan will be passed onto the Inspector appointed to examine the Plan. The Mineral Planning Authority will review and consider representations made and, where appropriate, will prepare a schedule of proposed main modifications to be submitted along with the Plan and other submission documents. Minor updates to the Plan may also be made in response to representations.

Appendix 1 – Neighbour Notifications (example) and Site Notices 2015

Locations of site notices posted in 2015

Where was notice posted?	When was it posted?
BS05 Whithill Quarry	22 July 2015
On gate at Quarry entrance; on highway sign adjacent to site entrance	
BS04 Frogden Quarry	22 July 2015
On bridleway sign-post on Castleton Road at start of track leading to the site	
BS02 Marnhull Quarry (Whiteways Lane)	22 July 2015
On gate at front of site, on Whiteways Lane On highway sign at Easton Lane	
AS01 Binnegar Quarry extension	23 July 2015
On signpost at entrance to site, on south side of Binnegar Road	
AS09 Hurn Court Farm extension	24 July 2015
Tied to Entrance gate of existing quarry Staple gunned to the wooden fencing to the front of HCF	
AS08 Horton Heath	24 July 2015
Tied to fencing at new site access Tied to bridleway signposts	
AS13 Roeshot	24 July 2015
Tied to Bridleway signpost along Hawthorn Rd	
AS22/BC04 Trigon Hill extension	29 July 2015
Tied to signpost at entrance to Trigon Quarry	
AS15 Tatchell's extension	29 July 2015
Tied to Tatchell's gate along Carey Road, to the west of the Wareham Industrial Estate	
PK08 Quarr Farm	29 July 2015
One of 4 sites on one map – notice tied to: 1) Bus stop sign at Gallows Gore, adjacent to Haycrafts Lane; 2) tied to highway sign at southern end of Haycrafts Lane; 3) tied to bridleway sign – directing across Broadmead Field.	
PK19 Broadmead Field	29 July 2015
One of 4 sites on one map – notice tied to: 1) Bus stop sign at Gallows Gore, adjacent to Haycrafts Lane; 2) tied to highway sign at southern end of Haycrafts Lane; 3) tied to bridleway sign – directing across Broadmead Field.	

Where was notice posted?	When was it posted?
<p>PK21 Gallows Gore</p> <p>One of 4 sites on one map – notice tied to: 1) Bus stop sign at Gallows Gore, adjacent to Haycrafts Lane; 2) tied to highway sign at southern end of Haycrafts Lane; 3) tied to bridleway sign – directing across Broadmead Field.</p>	29 July 2015
<p>PK15 Downs Quarry extension</p> <p>One of 4 sites on one map – notice tied to: 1) Bus stop sign at Gallows Gore, adjacent to Haycrafts Lane; 2) tied to highway sign at southern end of Haycrafts Lane; 3) tied to bridleway sign – directing across Broadmead Field.</p>	29 July 2015
<p>PK18 Quarry 4 extension</p> <p>One of 3 sites on one map – notice tied to: 1) bridleway sign on Priest’s Way at T-junction (with quarries to the right).</p>	29 July 2015
<p>PK17 Home Field Worth Matravers</p> <p>One of 3 sites on one map – notice tied to: 1) bridleway sign on Priest’s Way at T-junction (with quarries to the right).</p>	29 July 2015
<p>PK02 Blacklands Quarry</p> <p>One of 3 sites on one map – notice tied to: 1) bridleway sign on Priest’s Way at T-junction (with quarries to the right).</p>	29 July 2015
<p>PK10 Southard Quarry</p> <p>On fence post outside California Quarry; on tree along track leading to California Quarry</p>	04 August 2015
<p>RA01 White’s Pit extension</p> <p>At entrance to the access track leading to the White’s Pit site.</p>	06 August 2015
<p>AS19 Woodsford Farm Quarry extension</p> <p>At the end of public access leading to/from Moreton Station – adjacent to C33</p>	05 August 2015
<p>AS25 Station Road, Moreton</p> <p>At access to site off Station Road; Also put on Parish Council notice board, in Moreton village centre</p>	05 August 2015
<p>AS26 Hurst Farm, Moreton</p> <p>At entrance to farm, off B3390</p>	05 August 2015
<p>AS06 Great Plantation</p> <p>At end of public accesses leading to woodland, off the A352</p>	05 August 2015

Example of a Site Notice and Neighbour Notification Letter



DRAFT MINERAL SITES PLAN CONSULTATION

The Mineral Planning Authority (Bournemouth Borough Council, Dorset County Council, Borough of Poole) are preparing the Draft Mineral Sites Plan and consulting on possible future mineral extraction sites.

Why: We need to identify enough mineral sites to provide sufficient resources for the plan period, up to 2032, and we need your views about the locations for potential new mineral extraction sites.

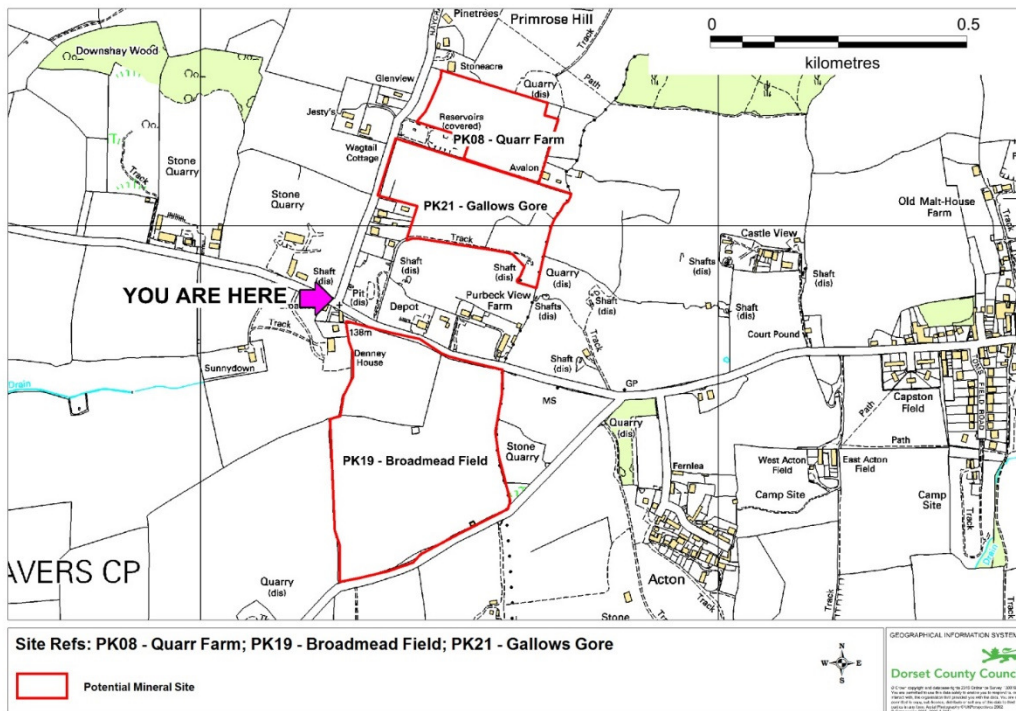
When: The consultation runs from 15 July to 23 September 2015.

Website: Information explaining the process and future steps is provided at:
<https://www.dorsetforyou.com/mineral-sites>

How to comment:

- Via the 'consultation portal' at: www.dorsetforyou.com/mineral-sites
- Via email to: mwdf@dorsetcc.gov.uk
- Via post using Comment Form available at the exhibitions, or by phoning: 01305 225706.

Purbeck Stone quarries are proposed in this location:



Where: A series of public exhibitions will be held where officers will attend to answer queries and give further information. The closest exhibitions will be held at:

Tue 4 Aug	Langton village hall 3-7pm
Tue 1 Sept	Dorchester Library 3-6.30pm
Wed 9 Sept	Wareham Corn Exchange 3-7pm



The Owner/Occupier
Cuckoo Mead,
Woodsford,
Dorchester,
DT2 8AS

Co-ordinating production of the Minerals and Waste Development Framework on behalf of the three minerals and waste planning authorities:

Economy Division
County Hall, Colyton Park
Dorchester DT1 1XJ

Telephone: 01305 225706
Fax: 01305 224835
Minicom: 01305 267933
Email: mwdf@dorsetcc.gov.uk
DX: DX 8716 Dorchester
Web site: www.dorsetforyou.com/mwdf

Date: 15 July 2015
My ref: MSP_DWP/2015

Dear Sir/Madam

Bournemouth, Dorset and Poole Draft Mineral Sites Plan **Town and County Planning (Local Planning) (England) Regulations 2012**

I am writing to let you know that a public consultation will start on 15 July 2015 and continue for a ten week period, ending at 5pm on 23 September 2015.

The **Minerals Sites Plan** is one of two planning policy documents forming the consultation. The Mineral Sites Plan includes preferred sites for mineral extraction, an area of search for sand and gravel, and further guidance on mineral site safeguarding.

You have received this letter because your property lies within 100m of one of the Mineral Sites which are included in the Mineral Sites Plan Consultation Document. You might be interested to read the document and make representations on the contents (such as whether any factors need to be taken into consideration by officers when assessing the sites).

Please note, these sites are proposed for **future** mineral extraction within the Plan period up to 2032, and current planning applications have not been submitted for them (the exceptions to this are the sand and gravel sites at Binnegar, Puddletown Road, Wareham – AS01, and Hurn Court Farm extension, Parley Lane, Hurn, Christchurch – AS09 for which applications have recently been received by the Mineral Planning Authority).

The **Mineral Sites Plan** document is still in preparation, and your views are important to help us make a full and informed assessment of the sites which have been nominated for inclusion in the Plan.

If you have internet access, you may find it easiest to make comments on the plan via the interactive consultation pages on our web site at the following address: www.dorsetforyou.com/mineral-sites

To make comments you will first need to register on the system. Once registered, you will be able to log on to the system at any time to track the progress of the comments that you have made, and to view other people's comments.

We would strongly encourage you to use this method of commenting, although we will also accept comments in other formats, such as via email, or posted to the address above.

If you do not have access to the internet, please contact us for a hard copy of the Plan, and a paper comment form. One copy of the paper response form has been included with this letter for your convenience. This form can be photocopied and further copies will be available at the local council offices, and at our planned exhibitions. The exhibition locations are set out in the enclosed leaflet.

The documents can also be viewed at the offices of Dorset County Council, the Borough of Poole and Bournemouth Borough Council and offices of the district councils.

As mentioned, a series of planning exhibitions are being arranged throughout Dorset where copies of the documents will be available and officers will be present to answer questions about the proposals. Details can be found on the enclosed leaflet.

If you have any queries or require further information, please do not hesitate to contact the Policy Team on 01305 225706, email mwdf@dorsetcc.gov.uk or write to the above address.

Alongside the Mineral Sites Plan, we will also be consulting on the **Draft Waste Plan**. The document contains the spatial strategy, vision, objectives, policies and options for future sites to address the key waste management needs that have been identified for Dorset.

The Draft Waste Plan can be viewed through the following web link: www.dorsetforyou.com/waste

Yours sincerely

Barbara Talbott (Mrs)
Planning Officer
Minerals and Waste Planning Policy

Appendix 2 – Neighbour Notifications (example) and Site Notices 2016



Dorset County Council

Development Framework on behalf of the three
minerals and waste planning authorities:

Economy Division
County Hall, Colliton Park
Dorchester DT1 1XJ

Telephone: 01305 224675
Fax: 01305 224835
Minicom: 01305 267933
Email: mwdf@dorsetcc.gov.uk
DX: DX 8716 Dorchester
Web site: www.dorsetforyou.com/mwdf

Date: 25 May 2016
My ref: MSP/NN

Dear Sir/Madam,

Bournemouth, Dorset and Poole Draft Mineral Sites Plan Town and County Planning (Local Planning) (England) Regulations 2012

I am writing to let you know that a public consultation will start on 26 May 2016 and continue for an eight week period, ending at 5:00 pm on 21 July 2016.

The **Draft Mineral Sites Plan** is one of two planning policy documents forming the consultation. It is an update on work being carried out to identify the preferred sites required to meet the need for minerals over the next 15 years.

You have received this letter because your property is within 100m of one of the mineral sites which are included in the consultation Draft Mineral Sites Plan Update 2016. You might be interested to read the Plan and make comments on the contents (such as telling the planning officers what you think they need to know about when assessing the sites).

Please note that planning applications have **not** been submitted for these sites – but they, along with others, are being considered to see whether they are suitable for development in the future and therefore should be included in the Mineral Sites Plan that is being prepared

If you have internet access, you may find it easiest to make comments on the plan via the interactive consultation pages on our web site at the following address www.dorsetforyou.com/mineral-sites

On this web site you will also find further information on the work already carried out on the Draft Minerals Sites Plan.

To make comments you will first need to register on the system. Once registered, you will be able to log on to the system at any time to track the progress of the comments that you have made, and to view other people's comments.

We would strongly encourage you to use this method of commenting, although we will also accept comments in other formats, such as via email, or posted to the address above. When you comment on a site proposal please include the site number so we know exactly which site you are writing about.

If you do not have access to the internet, please contact us for a hard copy of the relevant information and a paper response form.

The documents can also be viewed at the offices of Dorset County Council, the Borough of Poole and Bournemouth Borough Council and offices of the district councils.

If you have any queries or require further information, please do not hesitate to contact the Policy Team on 01305 224675, email mwdf@dorsetcc.gov.uk or write to us at the above address.

Alongside the Mineral Sites Plan, we will also be consulting on the **Draft Waste Plan 2016** which includes a number of sites emerging as preferred sites for new/improved waste facilities to meet the needs of the County over the next 15 years. The Draft Waste Plan can be viewed at the following web link: www.dorsetforyou.com/waste-plan

Yours sincerely

T. Badley

Trevor Badley

Minerals and Waste Planning Policy Team
Dorset County Council

MINERAL SITES PLAN CONSULTATION

The Mineral Planning Authority (Bournemouth Borough Council, Dorset County Council and Borough of Poole) is preparing the Draft Mineral Sites Plan and consulting on emerging potential future mineral sites.

Why: We need to identify and allocate suitable sites to meet the need for and maintain the supply of minerals.

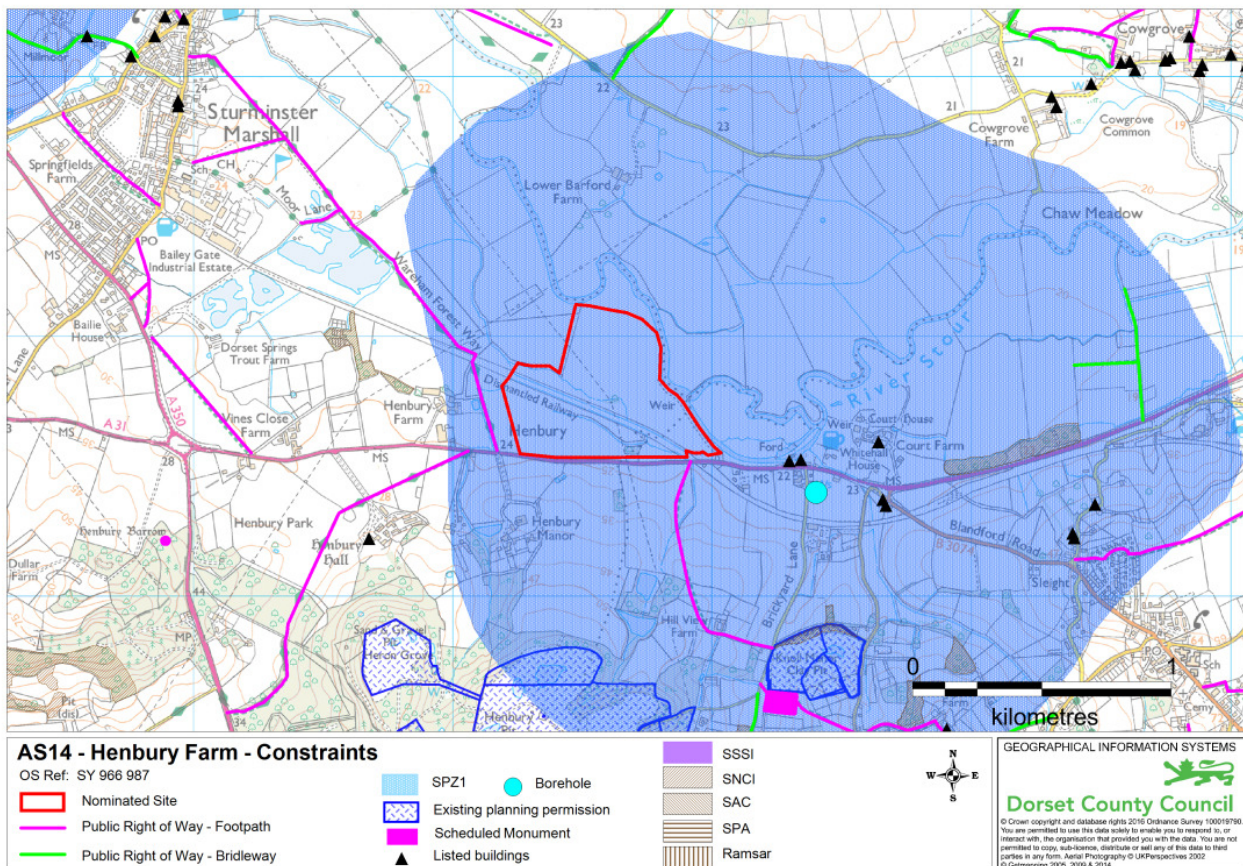
When: The consultation runs from 26 May to 21 July 2016

Website: Information explaining the process and future steps is provided at: www.dorsetforyou.com/mineral-sites

How to comment:

- Via the 'consultation portal' at: www.dorsetforyou.com/mineral-sites
- Via email to: mwdf@dorsetcc.gov.uk
- Via post using the comment form available by phoning: 01305 224675

AS14: Henbury Farm, Sturminster Marshall



This site has the potential to be a source of construction aggregate (sand/gravel)

Locations of site notices for the Draft Mineral Sites Plan Update 2016 – put in place on 25 May 2016

Site	Notice Location	Village
AS14 – Henbury Farm	On finger post at southern boundary of site on the A31	Henbury
	On footpath sign in centre of village, at junction of public footpath with main road, near school entrance	Sturminster Marshall
AS28 – Gallows Hill	On entrance gates to the Flying Club at eastern end of Puddletown Road	
	On road sign on road leading to Puddletown Road, near Chamberlayne's	
	On old fence post on bridleway running through the woods	
AS12 – Philliol's Farm	On Farm gate on boundary of the Philliol's Farm land where listed building/barn is located	
	On finger post for Bridleway on eastern boundary of the site.	
PK16 – Swanworth Quarry	On finger post for public footpath halfway down hill on Purbeck Way	
	On finger post on public footpath leading from village at southern extent of existing Quarry boundary	
	On wooden stake opposite existing Quarry entrance on main road to Worth Matravers	

Appendix 3 – Neighbour Notifications (example) and Site Notices 2017



DRAFT MINERAL SITES PLAN

The Bournemouth, Dorset and Poole Draft Mineral Sites Plan is now in its Pre-Submission Consultation.

Why: We need to identify enough mineral sites to be able to meet the need for minerals during the period, up to 2033.

We need your views about the locations for potential new mineral extraction sites - this is the last chance to make comments on the Draft Mineral Sites Plan before it goes to Examination

When: The consultation runs from **1 December 2017 to 31 January 2018**.

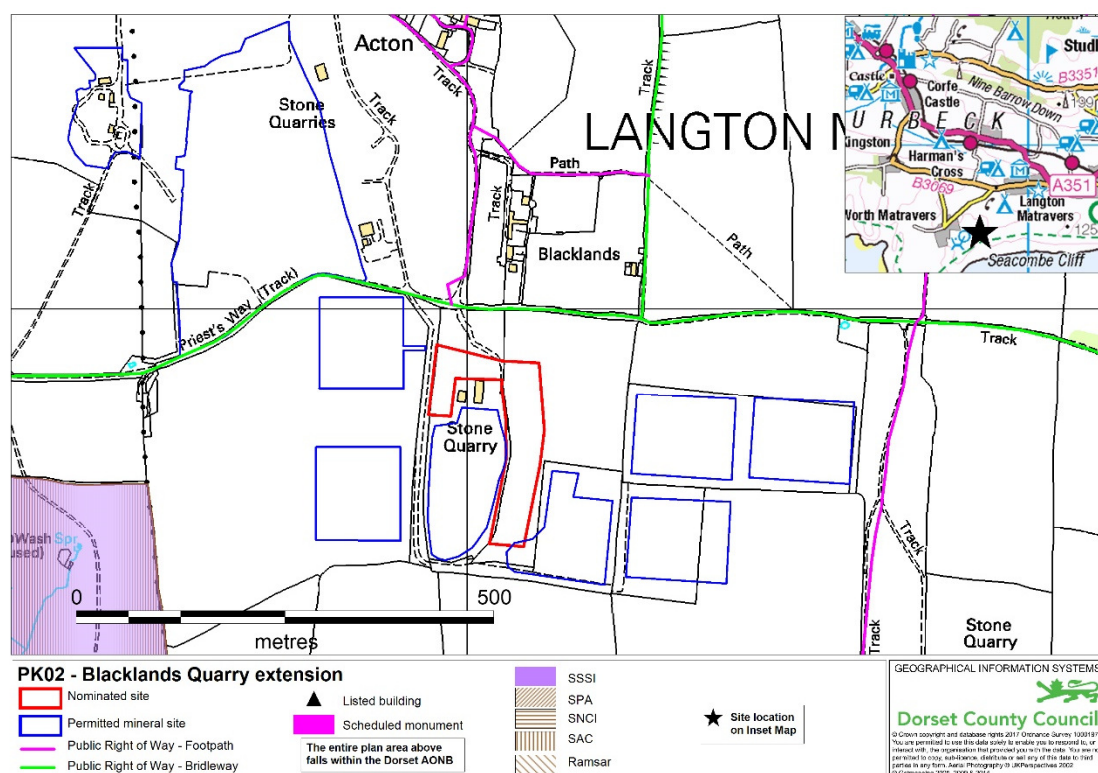
Website: Information explaining the process steps is provided at: <https://www.dorsetforyou.com/mineral-sites>

How to comment:

- Via the 'consultation portal' at: www.dorsetforyou.com/mineral-sites
- Via email to: mwdf@dorsetcc.gov.uk
- Via post using Comment Form available by phoning: 01305 224675 or 225706

PK02 Blacklands Quarry Extension - Inset 16

This site is proposed for allocation as a Purbeck Stone quarry.





Official

The Owner/Occupier

Co-ordinating production of the Minerals and Waste Development Framework on behalf of the three minerals and waste planning authorities:

Planning Division, County Hall, Colliton Park
Dorchester DT1 1XJ

Telephone: 01305 224675

Minicom: 01305 267933

We welcome calls via text Relay

Email: mwdf@dorsetcc.gov.uk

Website: www.dorsetforyou.com/minerals

Date: 30 November 2017

Ask for: Trevor Badley

My ref: PSMSP PK02

To the Owner/Occupier,

**Bournemouth, Dorset and Poole Pre-Submission Draft Mineral Sites Plan
Town and Country Planning (Local Planning) (England) Regulations 2012 (Regulation 19)**

I am writing to inform you that we are about to publish the Pre-Submission Draft Mineral Sites Plan, along with accompanying evidence reports. Consultation will start on 1 December 2017 and end at **5pm on 31 January 2018**.

The Mineral Sites Plan identifies specific locations for sand and gravel, crushed rock, ball clay, Purbeck Stone, other building stone and a site for the provision of recycled aggregates. An aggregates area of search is also proposed, which will facilitate additional supply providing certain criteria are met. In addition, the Plan proposes the allocation of the Puddletown Road Policy Area, facilitating better integrated mineral working and longer-term, improved management of mineral sites, after extraction is finished and they have been restored. It also proposes additional mineral site safeguarding.

You have received this letter because your property is within 250m of one of the mineral site allocations proposed in the Mineral Sites Plan - the site is:

- **PK02 – Blacklands Quarry Extension, Langton Matravers – Inset 16**

The map at the end of this letter shows the location of the site allocation, which is proposed for development for Purbeck Stone extraction.

This is the final opportunity for stakeholders to comment on the Plan before it is submitted to the Secretary of State for Communities and Local Government during early 2018, to be followed by an independent examination.

You might be interested to read the Mineral Sites Plan. The enclosed statement of representations procedure provides information on where the Plan and proposed submission documents can be viewed and how to make representations (comments).

Mike Harries, Director for Environment and Economy

Working together for a strong and successful Dorset



Comments are invited on whether or not you consider the plan to be sound (positively prepared, justified, effective and consistent with national policy) and/or legally compliant, as these are the matters which the inspector will consider at the examination. Further guidance is available on our website.

When commenting, please include the site reference number so we know exactly which site you are writing about. Please note that, as this is a statutory consultation stage, **late representations cannot be accepted.**

If you do not have access to the internet, please contact us for a hard copy of the relevant information and representation form.

NB: If you have commented on minerals proposals in the past you may also receive a separate letter.

If you have any queries or require further information, please do not hesitate to contact us on 01305 224675 or email mwd@dorsetcc.gov.uk or write to the above address.

Yours faithfully,

T. Badley

Trevor Badley
Minerals and Waste Planning Policy
County Planning, Minerals & Waste

