

YETMINSTER & RYME INTRINSECA NEIGHBOURHOOD PLAN 2017 - 2036

Information Statement

This information statement is about the referendum to be held on the Yetminster & Ryme Intrinseca Neighbourhood Plan

About town and country planning

In England, planning applications are determined by local planning authorities such as Dorset Council. Planning decisions are made in accordance with the adopted development plan, unless material considerations indicate otherwise. A development plan sets out the planning policies for the development and use of land.

At the current time, the [adopted Local Plan for West Dorset](#), which forms part of the development plan, is the starting point for considering planning applications in the area covered by the Yetminster & Ryme Intrinseca Neighbourhood Plan. The [National Planning Policy Framework](#) must be taken into account in the preparation of local and neighbourhood plans, and is a material consideration in planning decisions.

The Council's [Local Development Scheme](#) contains information on development plan documents that are being prepared.

About neighbourhood planning and the Yetminster & Ryme Intrinseca Neighbourhood Plan

Neighbourhood planning aims to help local communities play a direct role in planning the areas in which they live and work. Yetminster & Ryme Intrinseca Parish Council has produced the plan which shows how the community wants land to be used and developed in the neighbourhood plan area. If a plan is made following a successful referendum, it becomes part of the development plan for that area.

Yetminster & Ryme Intrinseca Parish Council started preparing a neighbourhood plan in 2015 and 2016. After much research and having listened to the various issues and suggestions made through various consultation events, a draft of version of the plan was produced for consultation between 7 September – 19 October 2020. The plan was then revised in response to the consultation and submitted to Dorset Council in July 2021. Dorset Council consulted on the submitted plan from 25 August 2021 until 13 October 2021.

Andrew Mead BSc (Hons) MRTPI MIQ was appointed to examine the plan as independent examiner. In December 2021 the examiner produced his [report](#)

confirming that he was satisfied that the plan meets the basic conditions and recommended that it should, subject to some changes, proceed to referendum.

Dorset Council considered the report and issued its decision, which was in agreement with the examiner's findings, that the plan as modified should proceed to referendum.

What the referendum is deciding

The question which will be asked in the referendum is:

'Do you want Dorset Council to use the neighbourhood plan for Yetminster & Ryme Intrinseca to help it decide planning applications in the neighbourhood area?'

The referendum asks you to vote 'yes' or 'no' to this question.

When the referendum will be held

The referendum will be held on **Tuesday 22 February 2022**.

What is the area covered by the referendum?

The referendum area and the area covered by the neighbourhood plan are the civil parishes of Yetminster & Ryme Intrinseca.

Who is entitled to vote?

You are entitled to vote in the referendum if you live in the referendum area, you are on the electoral register to vote in local council elections and you are 18 years of age or over on 22 February 2022.

You have to be registered to vote by Friday 4 February 2022 to vote in the referendum. You can check if you are registered to vote **by telephoning 01305 838299 during normal office hours**.

How can people vote?

The referendum will be conducted in accordance with procedures which are similar to those used at local government elections.

You can vote **in person** at your relevant polling station which will be detailed on your poll card. We will issue poll cards to voters on 2 February 2022. The polling stations will be open from 7am to 10pm on 22 February 2022.

To vote by post or proxy in this referendum, you will need to have filled in an application form and sent it to the Electoral Registration Officer. Postal and proxy vote application forms are available from the elections website [How to vote - Dorset Council](#) or by contacting Dorset Council.

Applications to vote by post must be received by 5:00 pm Monday 7 February 2022.

To vote by proxy, application forms should be received by 5:00 pm Monday 14 February 2022

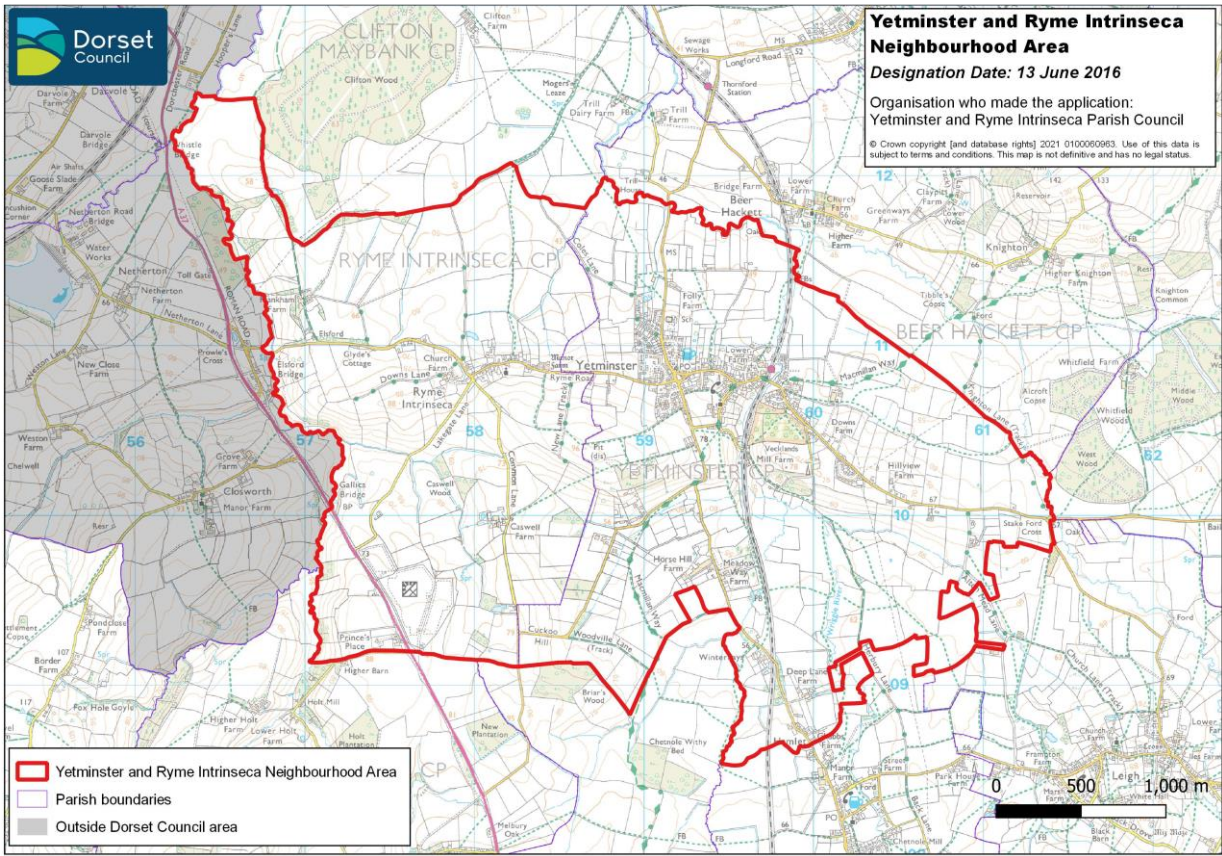
However, in certain circumstances emergency proxy vote applications can be received up until 5pm on the 22 February 2022. Anyone can be your proxy as long as they are eligible to vote and are willing to vote on your behalf. You will have to tell them how you want to vote.

Ballot papers for people who vote by post will be posted from 9 February 2022, and will need to be returned by 10pm on the day of the Poll, 22 February 2022.

Referendum expenses

The referendum expenses limit that will apply in relation to the referendum is £2,362 plus £0.059 per registered elector (the electorate in January 2022 was 1,088).

Map of the referendum area



What information is there available about the neighbourhood plan?

A copy of the specified documents, that is the documents listed below, may be inspected at the following locations:

- Online at www.dorsetcouncil.gov.uk/yetminster-ryme-intrinseca-neighbourhood-plan
- At the following libraries:
 - Dorchester Library, South Walks House, Charles Street, Dorchester, DT1 1UZ.
Dorchester Library is open at the following times: Monday 10am-5.30pm, Tuesday 9.30am-7pm, Wednesday 9.30am-1pm, Thursday 9.30-5.30pm, Friday 9.30-7pm, Saturday 9am-4pm, Sunday Closed.
 - Sherborne Library, Digby Hall, Hound Street, Sherborne, DT9 3AA.
Sherborne Library is open at the following times: Monday 10am-6.30pm, Tuesday 9.30am-1.30pm, Wednesday Closed, Thursday 9.30am-6.30pm, Friday 9.30-5.30pm, Saturday 9.30am to 4pm, Sunday Closed.

The specified documents are:

- A **Summary of Representations** submitted to the examiner
- The **Examiner's Report**
- The **Yetminster & Ryme Intrinseca Neighbourhood Plan 2017 - 2036 (referendum version)**
- The **Decision Statement**, which includes a statement by the local planning authority that the plan as proposed meets the basic conditions
- This **Information Statement**, which includes general information as to town and country planning including neighbourhood planning and the referendum